

ACCESS SERIES



ELIMINATES YOUR INSTALLATION PROBLEMS. INSTALL THE CASE NOW AND THE SCREEN LATER.

No other projection screen offers you these benefits. See page 6 for details.

- ACCESS SERIES screens feature ceiling trim flange, prewired junction box, and movable brackets.
- Extruded aluminum case is plenum rated (UL approved for use in environmental air space). Case can be installed in advance of screen: see page 6.

ACCESS/SERIES V—Motorized screen with our Tab Tensioning System and your choice of a viewing surface: M1300, M2500 or HiDEF GREY; or CINEFLEX for rear projection. Up to 160" wide.

ACCESS/SERIES E—Motorized screen with your choice of a viewing surface: Matt White, Glass Beaded, HIGH CONTRAST GREY or acoustically transparent AT1200 or AT GREY. Up to 164" wide.

SYSTEM OPTIONS

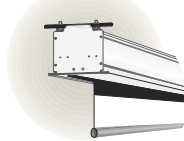
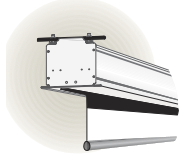
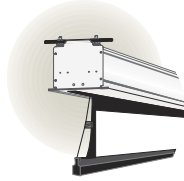
- **EXTRA DROP**—Up to 12' overall height, either screen surface color or black.
- **BLACK MASKING BORDERS**—Borders are optional for Series E in AV format, standard for all others.
- **CONTROL OPTIONS**—Page 4. Controls may be built into case.

Dimensions, drawings and specifications available at:

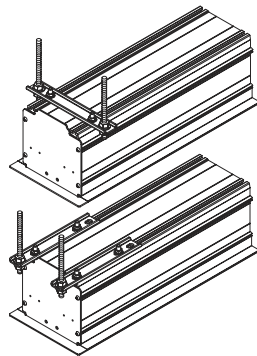
www.draperinc.com/go/AccessV.htm

www.draperinc.com/go/AccessE.htm

U.S. Patent Nos. 6,137,629; 6,421,175 and 6,532,109. Other patents pending.



Access/Series E with screen up



Access/Series E with screen down



Access/Series E open for screen installation



Installation of an Access/Series V screen at Concordia University, Chicago, IL. Installed by Sound Vision Audio/Visual Systems Integration.



DIMENSIONS & DATA—ACCESS SERIES

	Series E			Series V		
	Size H x W	Case Length*	Net Wt. (lbs.)	Case Length*	Net Wt. (lbs.)	
<i>AV Format</i>	50" x 50"	64"	50	75"	58	
	60" x 60"	74"	55	86"	66	
	70" x 70"	84"	65	96"	69	
	84" x 84"	98"	72	111¼"	74	
	72" x 96"	110"	80	122"	92	
	96" x 96"	110"	90	124¾"	92	
	7' x 9'	122"	92	135¼"	95	
	9' x 9'	122"	93	136¾"	95	
	8' x 10'	134"	97	148¾"	99	
	10' x 10'	134"	107	150½"	109	
	9' x 12'	158"	108	172¾"	110	
	12' x 12'	158"	119	178½"	121	

	Series E			Series V		
Nominal Diagonal	Image Area H x W	Case Length*	Net Wt. (lbs.)	Image Area H x W	Case Length*	Net Wt. (lbs.)
<i>NTSC Video (4:3)</i>						
6'	42½" x 56½"	74"	55	42½" x 56½"	81½"	60
7'	50" x 66½"	84"	61	50" x 66½"	91½"	68
100"	60" x 80"	98"	71	60" x 80"	105"	73
10'	69" x 92"	110"	82	72" x 96"	122"	92
11'	78" x 104"	122"	96	78" x 104"	131¼"	98
150"	87" x 116"	134"	102	87" x 116"	143¼"	104
15'	105" x 140"	158"	108	108" x 144"	172¾"	110
200"	118" x 158"	176"	114	—	—	—

<i>HDTV Format (16:9)</i>						
92"	45" x 80"	98"	74	45" x 80"	105"	76
106"	52" x 92"	110"	78	52" x 92"	117"	80
119"	58" x 104"	122"	82	58" x 104"	129"	85
133"	65" x 116"	134"	87	65" x 116"	142"	89
161"	79" x 140"	158"	104	79" x 140"	167¼"	106
184"	90" x 160"	178"	111	—	—	—

<i>WideScreen Format (1.85:1)</i>						
99"	47" x 87"	104"	85	47" x 87"	112"	97
108"	50" x 92"	110"	90	50" x 92"	117"	105
120"	56" x 104"	122"	100	56" x 104"	129"	130
132"	63" x 116"	134"	112	63" x 116"	142"	138
162"	76" x 140"	158"	118	76" x 140"	167¼"	145
182"	86½" x 160"	178"	128	86½" x 160"	187¾"	166

*Optional built-in controls increase length of case. In Series V, additional drop also increases case length. Case lengths shown include flange to support ceiling tile.

