

Installation/Operating Instructions

Paragon by Draper

⚠ Caution

- 1 Read instructions through completely before proceeding.
- 2 Follow instructions carefully. Installation contrary to instructions invalidates warranty.
- 3 Pick up screen case from **ends only**. Picking case up at other points **will damage case** and **may damage fabric**.
- 4 Entire bottom of screen case should be unobstructed to permit access to bottom panel for making electrical connections or servicing.
- 5 Screen should be installed level (using a carpenter's level).
- 6 Operating switch(es) packed separately in screen carton. Do not discard with packing material.
- 7 Screen operates on 110-120V, 60 Hz., 2.5 amp current draw.

NOTE: Screen has been thoroughly inspected and tested at factory and found to be operating properly prior to shipment.

Mounting Screen

Regardless of mounting method used, the following points apply:

- 1 Screen should be lifted into position **only by the end mounting brackets**. **Draper provides eyebolts to use in hoisting the screen. Never attempt to lift screen along its length.**
- 2 Screen should be positively and securely supported so that vibration or even abusive pulling will not weaken installation.
- 3 Installer must insure that fasteners used are of adequate strength and suitable for the mounting surface chosen. **Installer must also insure that wall or ceiling structure are of adequate strength.** Supporting hardware (chains, cables, rods, etc.) must be essentially vertical.
- 4 Entire bottom of case must be readily accessible after installation is complete.
- 5 Front, back and top of case must be straight—not forced to warp or bow. Use threaded rod and support brackets to keep large cases from warping.
- 6 Do not use case to support adjacent sections of ceiling.
- 7 If optional ceiling flange trim kits are attached, use hardware provided.
- 8 If case is painted, slots on bottom of case should be shielded to protect viewing surface from paint splatters or overspray.
- 9 Do not seal unit in ceiling until electrical connections have been made and screen has been operated successfully.

Electrical Connections

Screen operates on 110-120V, 60 Hz., 2.5 amp current draw.

Junction box is located just above the closure panel, at the motor end of screen (left hand motor location only on Paragon). To properly remove closure panel, two people should follow the steps on page two of these instructions. The junction box access plate is held closed with pan head screws and may be opened with a Phillips screwdriver. Removal of access plate exposes red, black and white pigtail leads and green internal ground wire per attached wiring diagram.

Screen is shipped with internal wiring complete and control switch(es) fully boxed. Wire connecting screen to switch(es) and switch(es) to power supply should be furnished by installer. Connections should be made in accordance with attached wiring diagram, and wiring should comply with national and local electrical codes.

All operating switches should be "off" before power is connected.

Please see back page for dimensional diagrams of case and optional wall mounting bracket, wiring diagrams and instructions on removing and replacing the bottom closure.

Operation

When screen is first operated, **be cautious!** Cycle unit down and up several times to confirm satisfactory operation.

110-120V SINGLE STATION CONTROL—3-position UP-OFF-DOWN switch permits operation to be stopped at any point. Factory adjusted limit switches automatically stop screen when fully down or fully up.

110-120V MULTIPLE STATION CONTROL—Switches are similar in appearance to 110-120V Single Station Control. Screen stops when switch is released and may be restarted in either direction. Factory adjusted limit switches stop screen automatically when fully up or fully down.

24V MULTIPLE STATION CONTROL—Three-button UP-STOP-DOWN switches

stop at any point desired, operate in any sequence. Factory adjusted limit switches automatically stop screen when fully up or fully down.

KEY OPERATED SWITCHING—Two kinds of key-operated switches are optionally available with this unit. ① The key-operated power supply switch controls power to the screen and switches. When it is "off", the switches will not operate screen. Key may be removed from the switch in either "on" or "off" position. ② A three-position key switch permits the screen to be operated directly by key. In this case, the screen's operator must always have a key.

RS232/Ethernet—Serial communication and network communication optionally available with wall switches, RF or IR remote.

Limit Adjustments

Tools needed: Flashlight, small flathead screwdriver/Allen wrench (4mm or 5/32").

Screen settings have been factory set as ordered and should not normally require further adjustment. However, if you find it necessary to adjust for more or less viewing area, proceed as follows.

⚠ CAUTION: Always be prepared to shut screen off manually when new adjustment is being tested. Screen may be severely damaged if viewing surface is allowed to run too far up or too far down. When running up, the dowel should never wrap over the roller. When run to the down limit, a minimum of 1¼ wraps of fabric must remain on the roller.

The motor limit screws are normally located on the audience left of screen roller. Screen has been factory set and should not normally require further adjustment. However, if you desire to change the "up" and "down" stopping positions, proceed as follows:

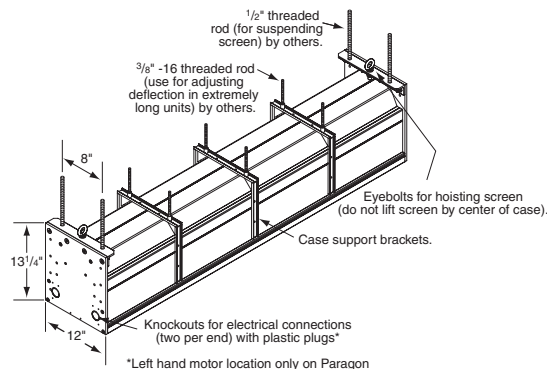
⚠ CAUTION: Be sure all switches are in "off" position before adjusting limit switches. Always be prepared to shut screen off manually when new adjustment is being tested. Screen may be severely damaged if viewing surface is allowed to run too far up or too far down.

ADJUSTING "FULLY UP" POSITION—Put a small screw driver in the groove of the yellow button on the motor and press vertically until hearing a "click". Raise the shade by pressing the "up" switch on unit. Press the "stop" switch when the screen is at the desired position. Then press the yellow button on motor until you hear a "click", then release.

ADJUSTING "FULLY DOWN" POSITION—Put a small screw driver in the groove of the white button on the motor and press vertically until hearing a "click". Lower the screen by pressing the "down" switch on unit. Press the "stop" switch when the screen is at the desired position. Then press the white button on motor until you hear a "click", then release.

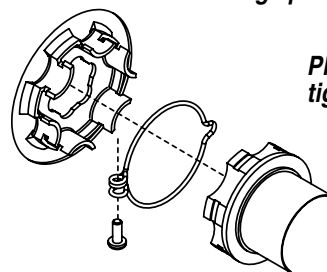
AT NO TIME SHOULD SCREEN BE UNROLLED ENOUGH TO EXPOSE ANY PART OF SCREEN ROLLER.

⚠ CAUTION: Do NOT allow the dowel to wrap up over the roller when the screen is running up! This could damage the screen.



Suitable for use in environmental air space in accordance with Section 300-22(c) of the National Electrical Code, and Sections 2-128, 12-010(3) and 12-100 of the Canadian Electrical Code, Part 1, CSA C22.1.

Caution: Do not remove the roller assembly from the case unless necessary for repairs. If the roller assembly is removed, be sure motor is fully re-seated in the bracket, and re-secure it carefully with the motor retaining spring and screw (see diagram below).



Please note: Maximum torque for tightening screw is 5 lb-inches.

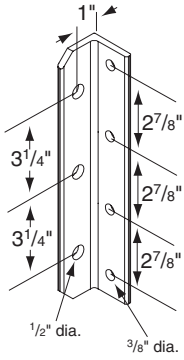
DRAPER

411 S. Pearl St., Spiceland, IN 47385 USA ■ 765-987-7999
www.draperinc.com ■ fax 765-987-7142

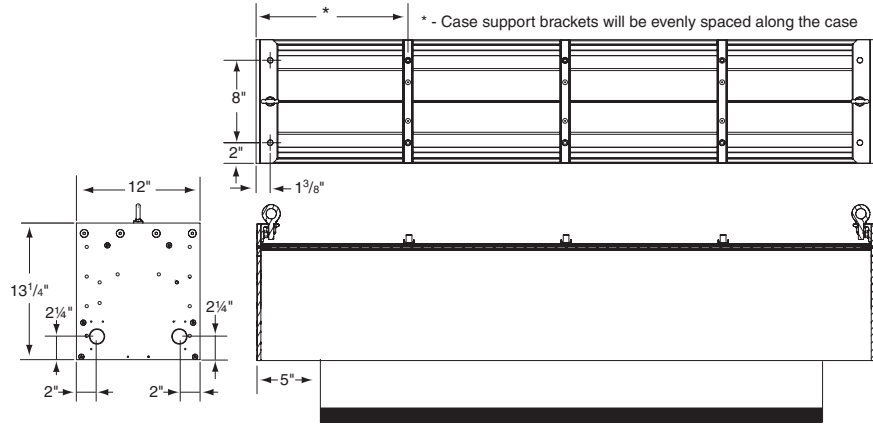
Copyright © 2007 Draper Inc. Form Paragon_Inst07-R Printed in U.S.A.

If you encounter any difficulties installing or servicing your Paragon screen, call your dealer or Draper, Inc., Spiceland, Indiana, (765) 987-7999 or fax (765) 987-7142.

Optional Wall Mounting Bracket



Case Dimensions*

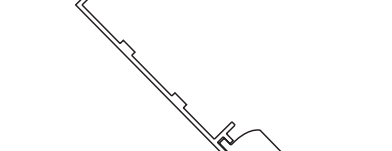
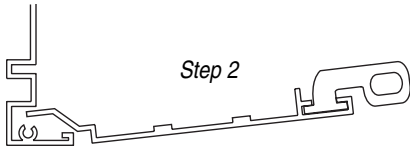
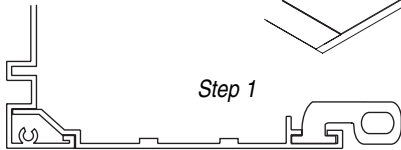
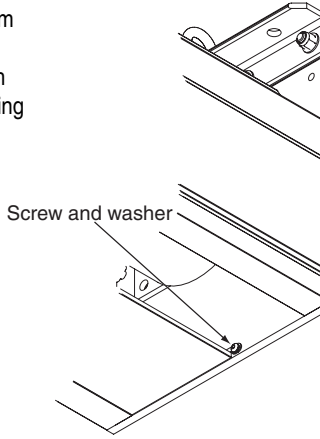


***Please Note: Optional wall brackets add 1 1/4" per bracket to case length. Wall mounting bracket hole location is 1" from end of case.**

Bottom Closure Removal/Replacement

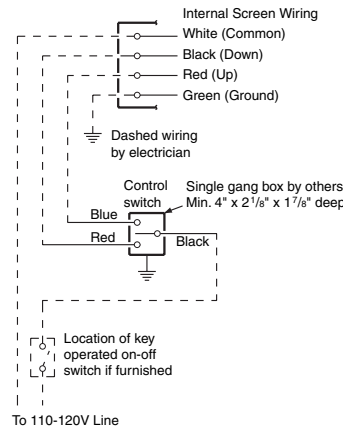
Removal and replacement of the bottom closure panel requires two people positioned about 5' from each end of the panel. Closure should be handled as shown in Step 5 below to prevent bowing of the closure during handling.

Before removing bottom closure, you must first remove screws at each end of case (see drawing at right).

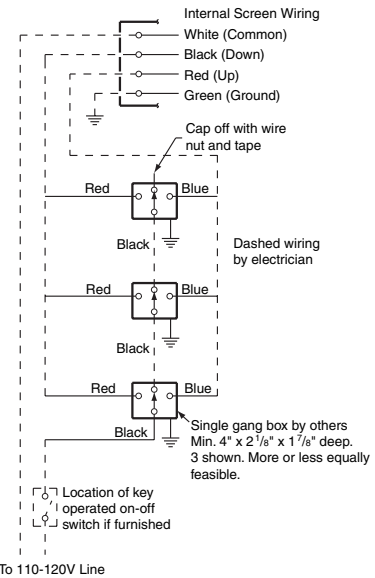


Wiring Diagrams

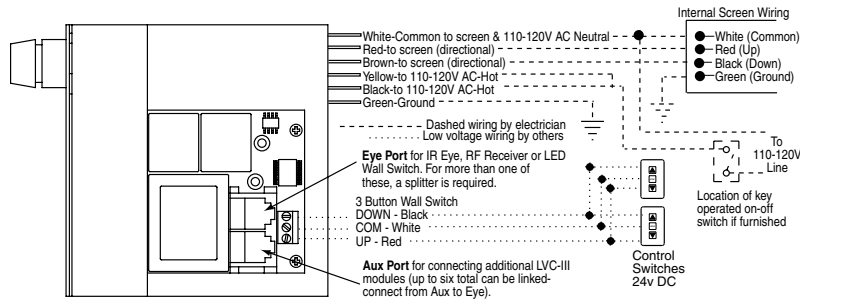
Single Station Control



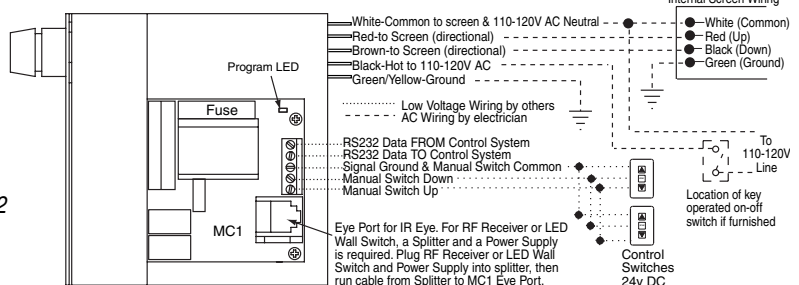
Multiple Station Control



Low Voltage & Wireless Control



Two-Way Serial Communication (RS232) with MC1



See separate Serial Communication-RS232 Instruction sheet for enabling RS232 with the MC1.