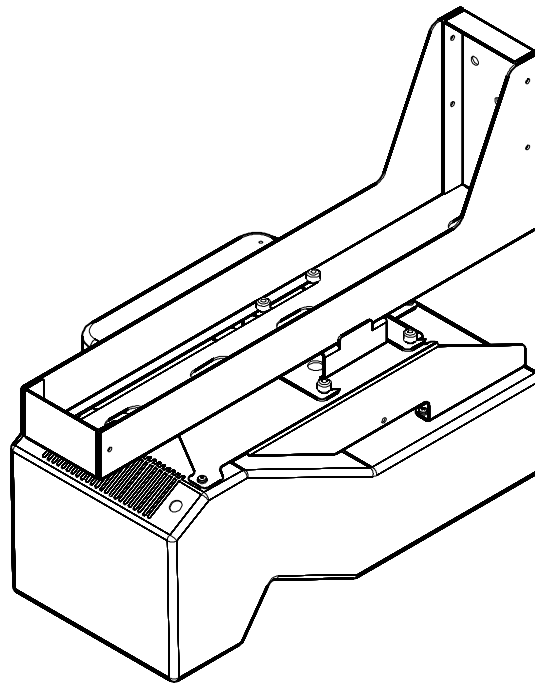

INSTALLATION INSTRUCTIONS



Adjustable Projector Wall Mount

 **CHIEF**[®]

WPA Series

DISCLAIMER

Milestone AV Technologies, Inc., and its affiliated corporations and subsidiaries (collectively, "Milestone"), intend to make this manual accurate and complete. However, Milestone makes no claim that the information contained herein covers all details, conditions or variations, nor does it provide for every possible contingency in connection with the installation or use of this product. The information contained in this document is subject to change without notice or obligation of any kind. Milestone makes no representation of warranty, expressed or implied, regarding the information contained herein. Milestone assumes no responsibility for accuracy, completeness or sufficiency of the information contained in this document.

! IMPORTANT WARNINGS AND CAUTIONS!

! WARNING: A WARNING alerts you to the possibility of serious injury or death if you do not follow the instructions.

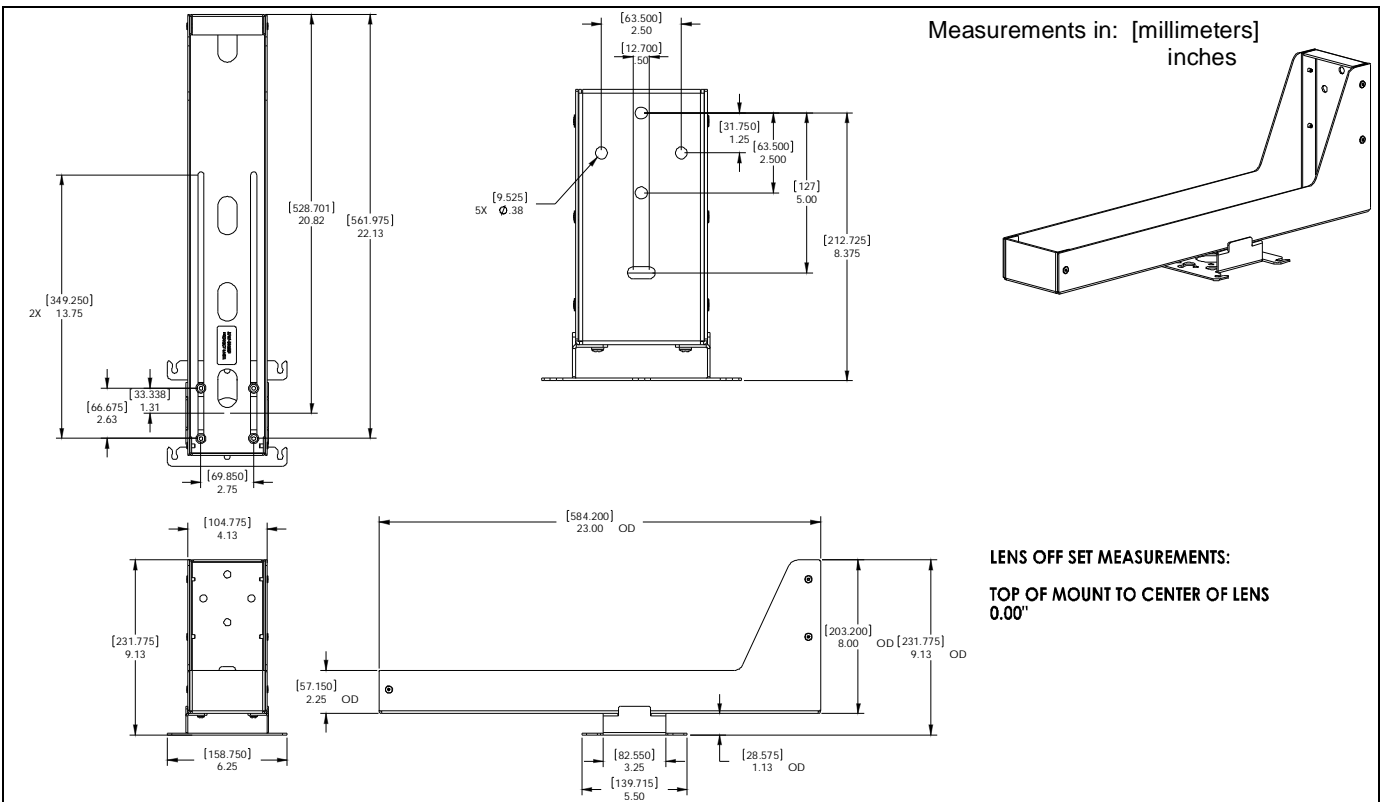
! CAUTION: A CAUTION alerts you to the possibility of damage or destruction of equipment if you do not follow the corresponding instructions.

! WARNING: Failure to read, thoroughly understand, and follow all instructions can result in serious personal injury, damage to equipment, or voiding of factory warranty! It is the installer's responsibility to make sure all components are properly assembled and installed using the instructions provided.

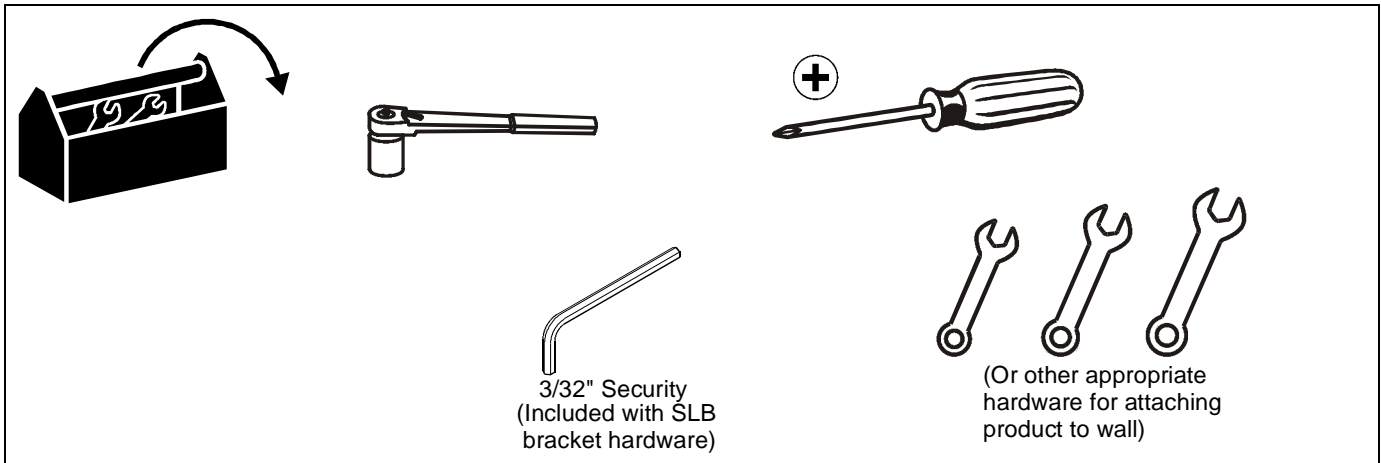
! WARNING: Failure to provide adequate structural strength for this component can result in serious personal injury or damage to equipment! It is the installer's responsibility to make sure the structure to which this component is attached can support five times the combined weight of all equipment. Reinforce the structure as required before installing the component.

! WARNING: Exceeding the weight capacity can result in serious personal injury or damage to equipment! It is the installer's responsibility to make sure the combined weight of all components located between the WPA up to (and including) the display/projector does not exceed 50 lbs (22.68 kg).

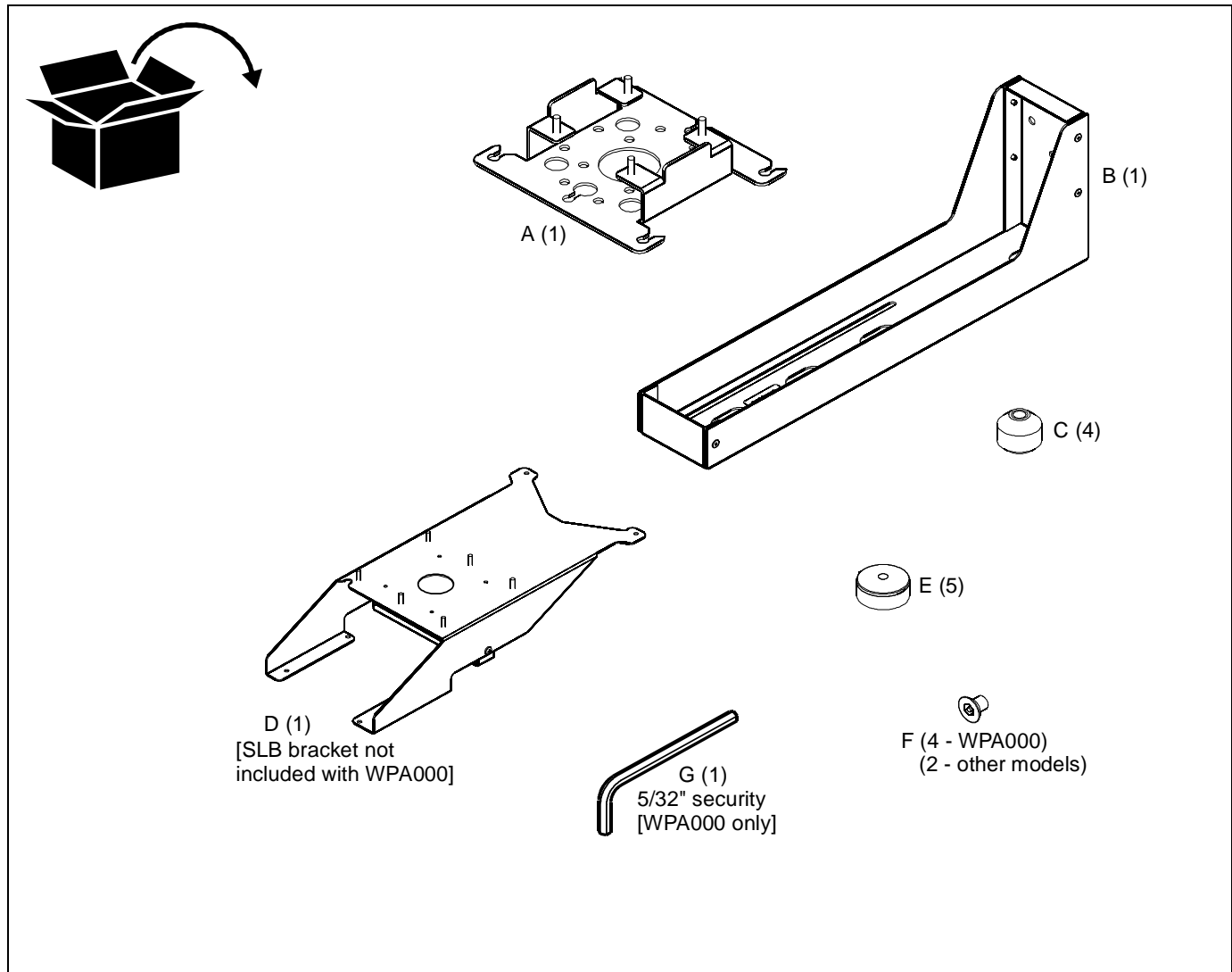
DIMENSIONS



TOOLS REQUIRED FOR INSTALLATION



PARTS



ASSEMBLY AND INSTALLATION

1. Attach wall mount adjustment bracket (A) to the wall bracket (B) using four thumb-nuts (C). (See Figure 1)

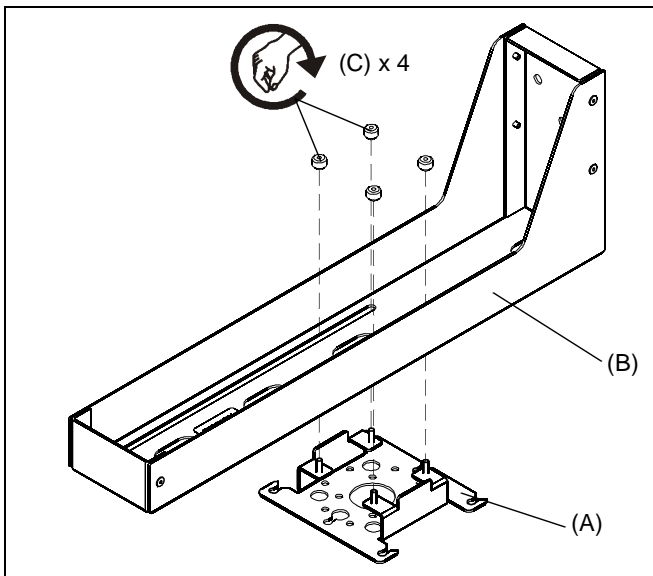


Figure 1



WARNING: FAILURE TO PROVIDE ADEQUATE STRUCTURAL STRENGTH FOR THIS COMPONENT CAN RESULT IN SERIOUS PERSONAL INJURY OR DAMAGE TO EQUIPMENT! It is the installer's responsibility to make sure the structure to which this component is attached can support five times the combined weight of all equipment. Reinforce the structure as required before installing the component.

2. Determine location for wall bracket (B) and locate wall stud to which bracket will be attached.
3. Attach wall bracket (B) to stud through upper hole in wall bracket using 5/16" x 2" long lag bolts and 5/16" flat washers (not included) through hardware covers (E). (See Figure 3)
4. Place second fastener through lower slot in wall bracket (B). (See Figure 3)
5. Adjust wall bracket (B) side to side until it is level and tighten fasteners.
6. Close hardware covers (E).

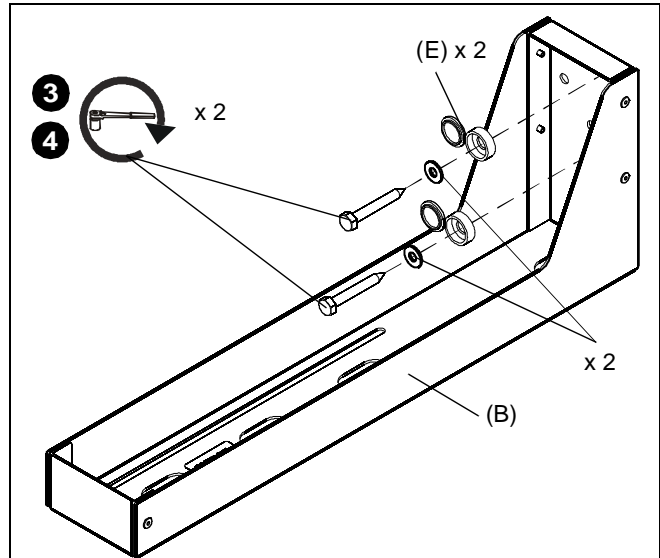


Figure 2

Attaching Interface Bracket

1. Attach SLB interface bracket (D as example) to the projector following instructions included with the SLB interface bracket.
2. Attach projector with SLB interface bracket to the wall mount adjustment bracket (A).
3. Tighten thumb nuts. (See Figure 3)

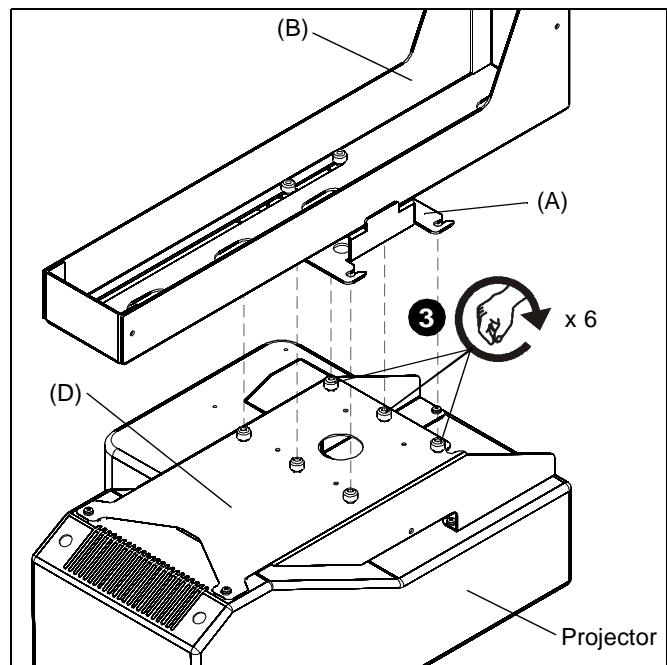


Figure 3

Adjustments

1. Loosen the four thumb-nuts on the wall bracket.
2. Move projector to get maximum or minimum extension. (See Figure 4)

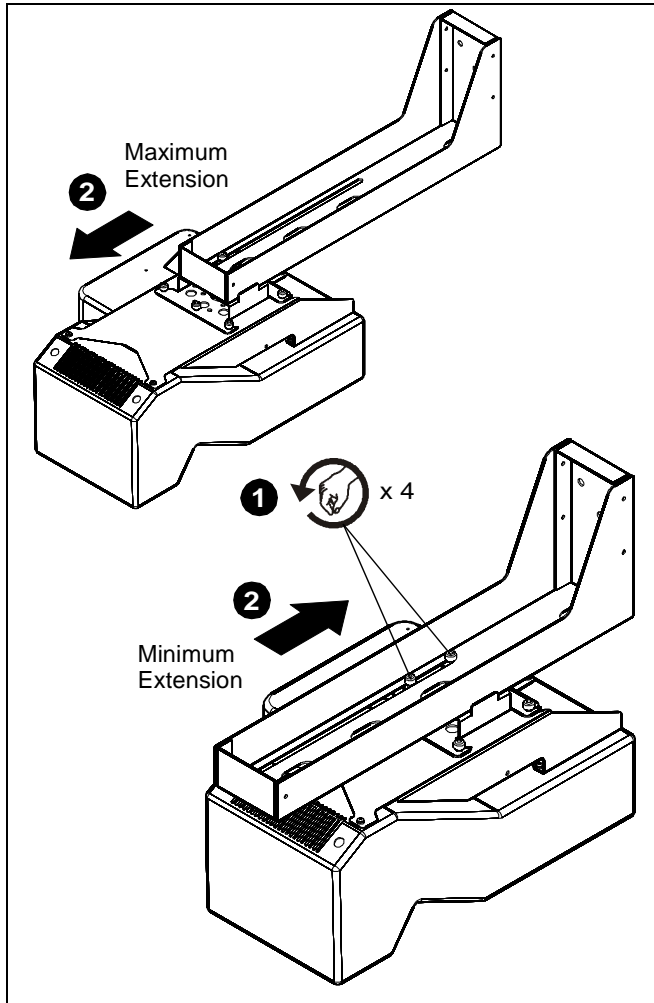


Figure 4

Attaching All-Points Security

For additional security, the All-Points Security kit may be installed.

1. Replace four screws from the interface bracket (preferably from opposite corners) with four security screws (F-and additional screws from security kit if applicable). (See Figure 5)

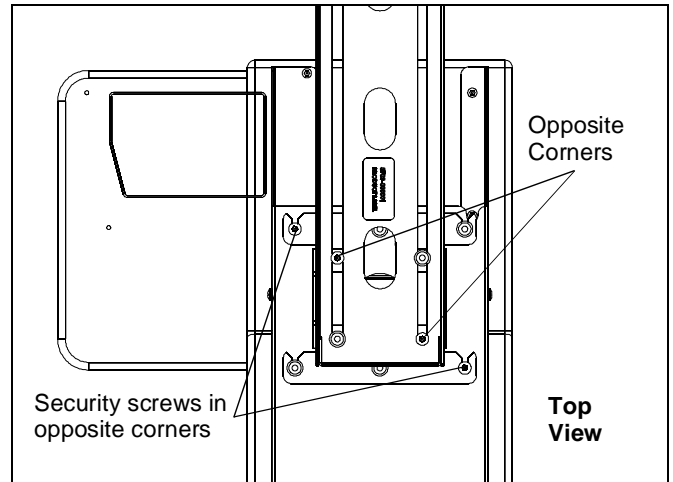


Figure 5

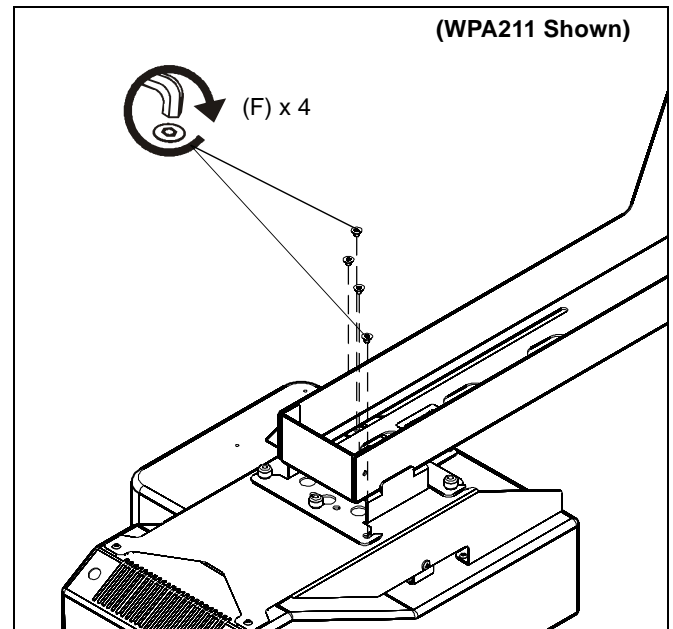


Figure 6



8803-000105 Rev.A
©2008 Chief Manufacturing
www.chiefmfg.com
02/08

USA/International	A 8401 Eagle Creek Parkway, Savage, MN 55378 P 800.582.6480 / 952.894.6280 F 877.894.6918 / 952.894.6918
Europe	A Fellenoord 130 5611 ZB EINDHOVEN, The Netherlands P +31 (0)40 2668620 F +31 (0)40 2668615
Asia Pacific	A Room 24F, Block D, Lily YinDu International Building LuoGang, BuJi Town, Shenzhen, CHINA. 深圳市布吉罗岗村百合银都国际大厦D栋24F P +86-755-8996 9226 F +86-755-8996 9217