

Quick Setup

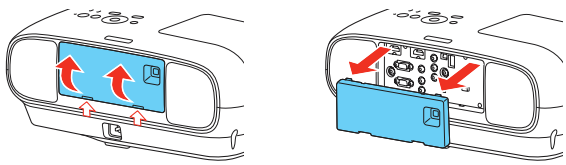
Before using the projector, make sure you read the safety instructions in the online *User's Guide*.

Note: These illustrations show the PowerLite Home Cinema 3600e, but the instructions are the same for the PowerLite Home Cinema 3000/3500/3510 unless otherwise noted.


Connect the projector

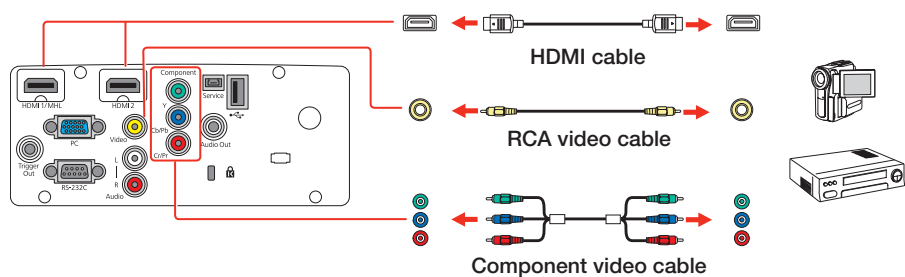
Choose from the following connections. For additional connection types, see the online *User's Guide*.

Note: To access the rear ports on the PowerLite Home Cinema 3600e, remove the cable cover by using coins or your fingernails to lift up and out on the gaps at the bottom of the cable cover.



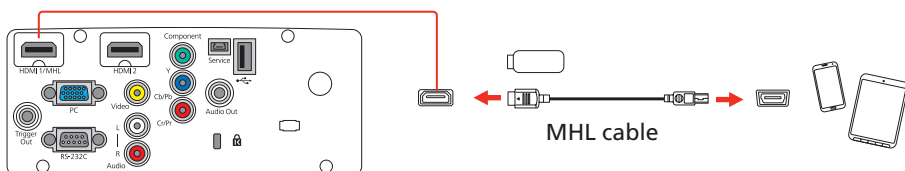
Video device

Connect up to 4 video devices and use the Source buttons on the remote control or the  button on the projector to switch between them.



Mobile media device (PowerLite Home Cinema 3500/3510/3600e)

Connect tablets, smartphones, and other devices that support the MHL™ standard to the **HDMI 1/MHL** port using a MHL compatible cable.



Note: Some devices may require an adapter or may not require an MHL cable. Not all features or functions may be supported. Check your device's documentation for more information.

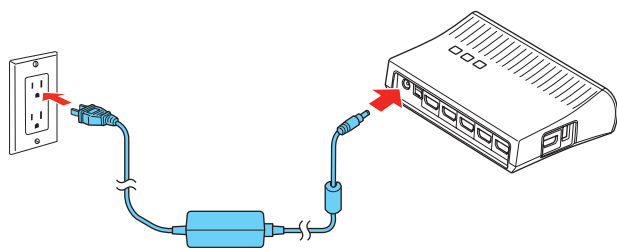
WirelessHD (PowerLite Home Cinema 3600e)

Follow these steps to set up the included WirelessHD Transmitter.

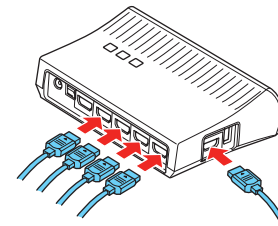
1 Place the transmitter within 32 feet (10 m) of the projector. Make sure the front of the transmitter faces the front of the projector. See the online *User's Guide* for more information on the WirelessHD transmission range.

Note: Do not place the transmitter on a metal surface, as this may interfere with the signal. Make sure there are no obstructions between the transmitter and the projector.

2 Plug the AC adapter into the transmitter and a wall outlet.

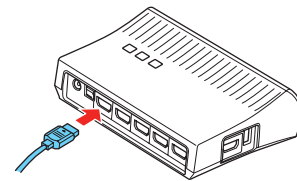


3 Connect the HDMI cables to your video input devices and the HDMI ports on the side and back of the WirelessHD Transmitter. You can connect up to five input devices to the transmitter. See "Viewing WirelessHD content" for information on switching between input sources



Note: You can connect tablets, smartphones and other devices that support the MHL standard to the HDMI port on the side of the WirelessHD Transmitter. Some devices may require an adapter or may not require an MHL cable. Not all features or functions may be supported. Check your device's documentation for more information.

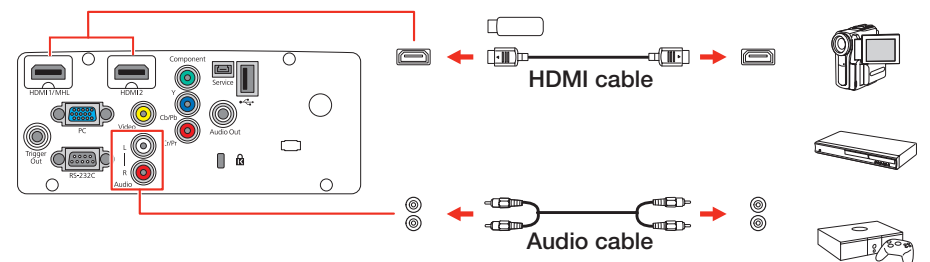
4 To use the transmitter as a pass-through device to a television or other display, connect an HDMI cable to the display device and the HDMI output port on the rear of the transmitter. See "Viewing WirelessHD content" for information on switching between wireless and wired display modes.



Connect audio

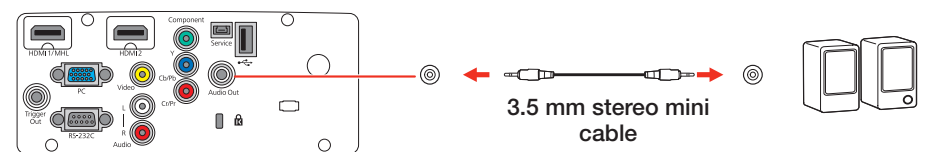
Built-in speaker (PowerLite Home Cinema 3500/3510/3600e)

The projector has a built-in speaker that can play audio from a connected video source (DVD player, streaming device, etc.) using an HDMI connection. If you do not use an HDMI connection, you can connect your device's audio output to the projector's audio input.



Audio Out port (PowerLite Home Cinema 3500/3510/3600e)

You can connect the projector to external self-powered speakers through the **Audio Out** port.



Note: You can also connect external self-powered speakers to the **Optical Out** port on the WirelessHD Transmitter (PowerLite Home Cinema 3600e).

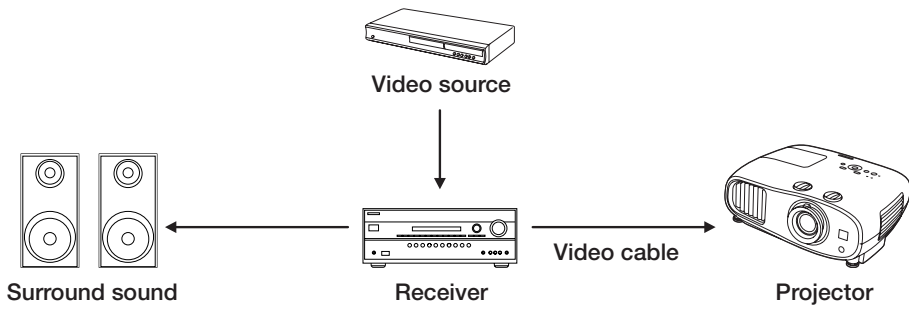
External speakers

Connect your device's audio output to your home theater receiver or powered speakers.

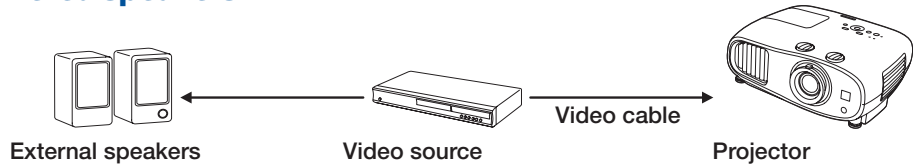
Note: When outputting sound through an external source, you may need to reduce the projector volume to zero or make sure that the correct audio output is selected on your device to prevent duplicate sound from being heard from the projector (PowerLite Home Cinema 3500/3510/3600e).



Home theater system



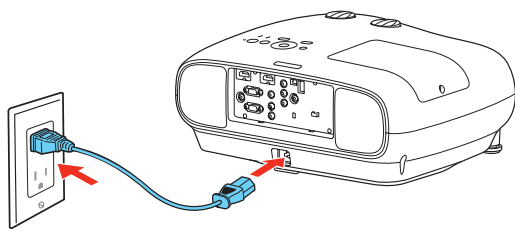
Powered speakers



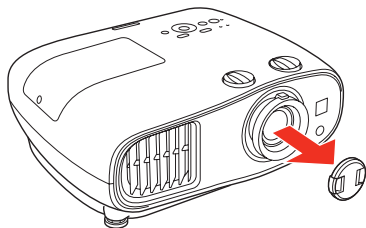
Note: See your home theater receiver documentation for more information on connections.

Turn on your equipment

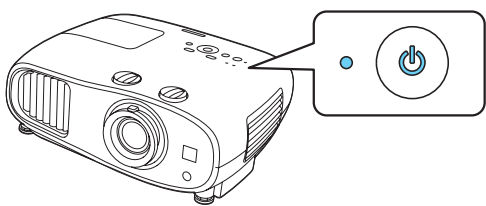
- 1 Turn on your video source.
- 2 Plug in the projector.



- 3 Remove the lens cap.



- 4 Press the power button on the projector or the **On** button on the remote control. The power light flashes blue, then stays on.



Note: To shut down the projector, press the power button on the projector or the **Standby** button on the remote control twice. You don't have to wait for the projector to cool down.

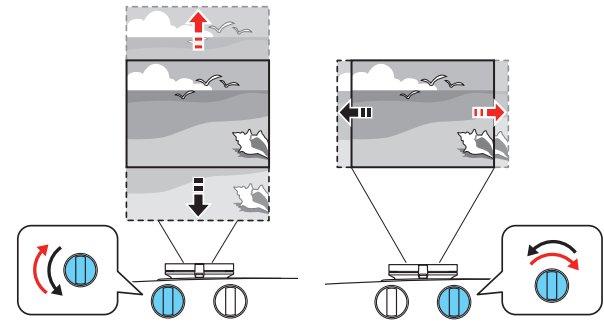
- 5 The default language of the menu system is English. To select another language, press the **Menu** button on the projector or remote control. Select **Settings** and press **Enter**. Select **Language** and press **Enter**. Select your language and press **Enter**. Press the **Menu** button to exit the menu system.

Adjust the image

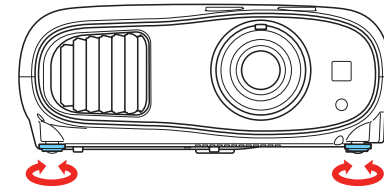
- 1 If you don't see an image, press one of the Source buttons on the remote control or the button on the projector to select the image source.

Note: If you still see a blank screen or have other display problems, see "Troubleshooting."

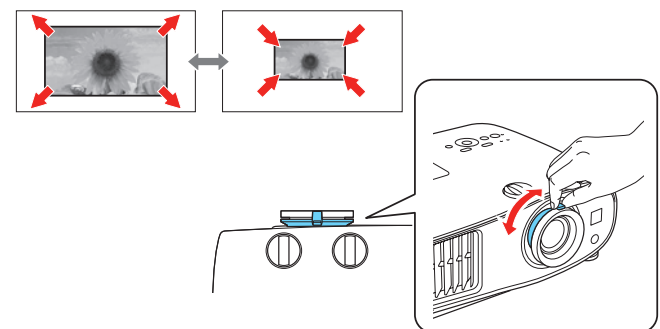
- 2 For the best image quality, place the projector directly in front of the center of the screen, facing the screen squarely. If this is not possible, turn the horizontal and vertical lens shift dials to adjust the image position and center it on the screen.



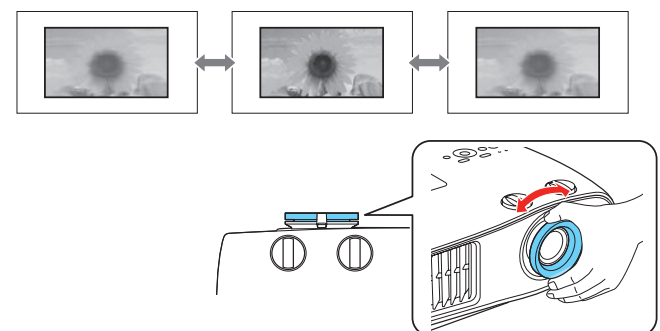
- 3 If the image is tilted, adjust the front feet as shown below.



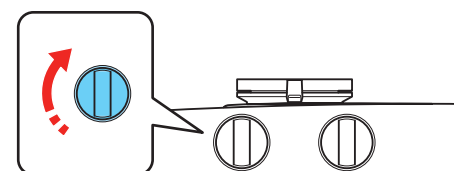
- 4 Turn the zoom ring to reduce or enlarge the image.



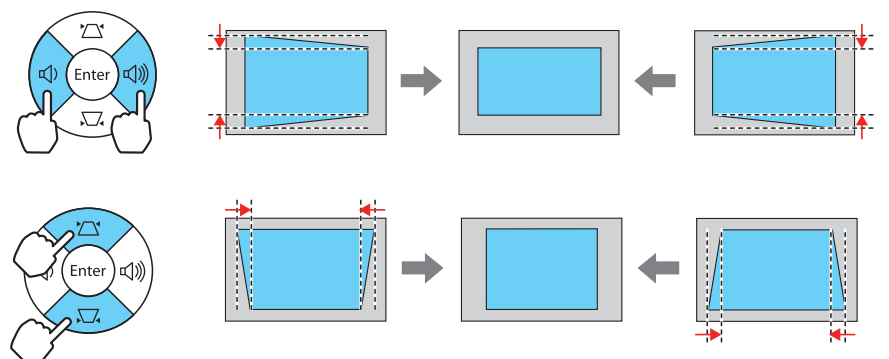
- 5 Turn the focus ring to sharpen the image.



- 6 If your image is uneven on the sides, you can use the keystone correction feature to adjust the image. To use this feature, you must first set the lens to the center-top position using the lens shift dials.

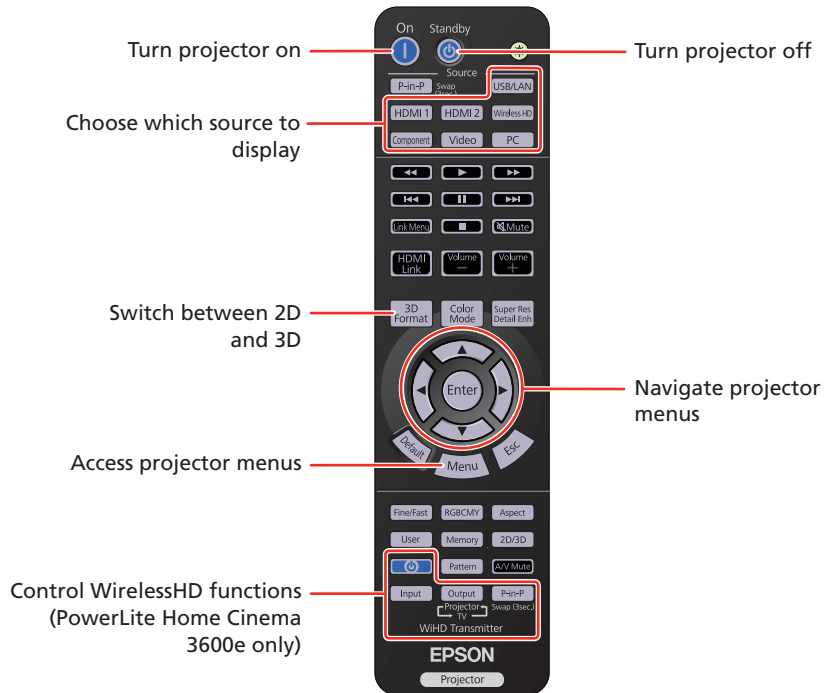
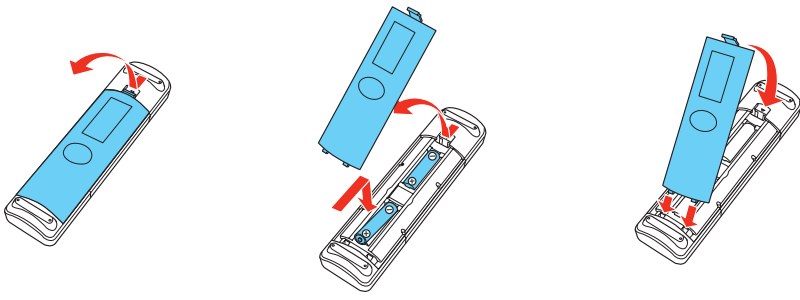


Press the or buttons to display the keystone correction screen. Then press the , , , or buttons to correct for horizontal and vertical keystone distortion.



Using the remote control

Make sure the batteries are installed as shown (two AA batteries).

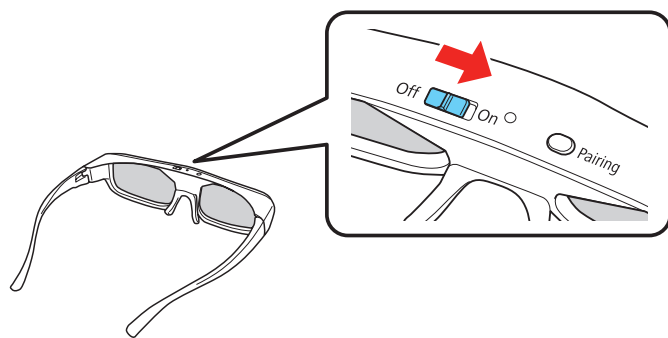


For more information on using the remote control, see the online *User's Guide*.

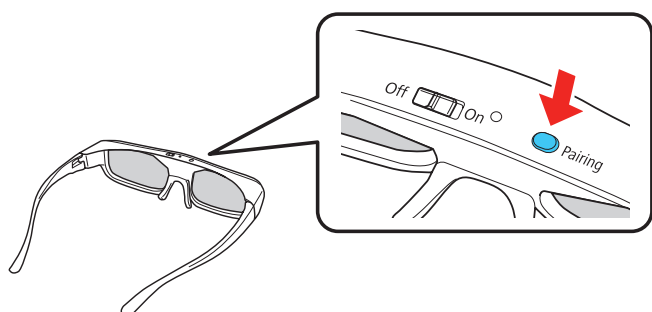
Viewing 3D images

To view 3D content, you must first connect a 3D-compatible video device to one of the HDMI ports on your projector. You will also need a pair of Epson® (part number V12H548006) or Epson-compatible RF 3D active shutter glasses (included with PowerLite Home Cinema 3500/3510/3600e).

- 1 Turn on and begin playback on the 3D-compatible video device.
Note: Make sure you set the video device to play content in 3D mode.
- 2 Press the **3D Format** button on the remote control, if necessary.
- 3 Slide the power switch on your 3D glasses to the **On** position.



Note: If the glasses don't automatically display 3D content, you may need to pair them with the projector. Move the glasses within 10 feet (3 m) of the projector, then press and hold the **Pairing** button on the 3D glasses for at least 3 seconds. The status light on the glasses will alternately flash green and red, then remain green for 10 seconds if pairing is successful.

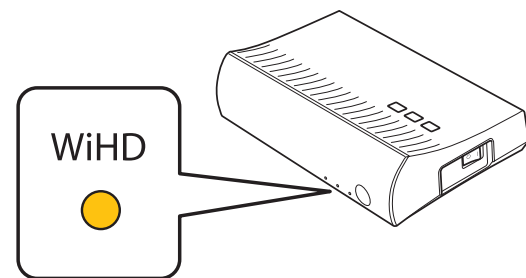


You can also automatically convert 2D HDMI content to 3D (PowerLite Home Cinema 3500/3510/3600e). To enable the 2D-to-3D Conversion option, press the **Menu** button on the projector or remote control. Select **Signal** and press **Enter**, then select **3D Setup** and press **Enter**. Select **2D-to-3D Conversion** and press **Enter**. Select the **Weak**, **Medium**, or **Strong** setting, then press **Enter**.

See the online *User's Guide* for more information on adjusting 3D images.

Viewing WirelessHD content (PowerLite Home Cinema 3600e)

- 1 Turn on your video device and begin playback.
- 2 Turn on the power switch on the side of the WirelessHD Transmitter.
- 3 Turn on the projector.
- 4 If you have connected a television or other display to the output port on the transmitter and want to switch between wired and wireless display modes, press the **Output** button on the remote control or transmitter. The WiHD light on the transmitter will light up when the wireless display mode is active.



- 5 Press the **WirelessHD** button on the remote control.
Note: If the WirelessHD connection fails, press the **Setup** button on the bottom of the transmitter, then try again.
- 6 If you have connected multiple input devices to the transmitter, press the **Input** button on the remote control or transmitter once to display the sub-screen menu, then press the button again to switch between the input devices.
- 7 To display two WirelessHD input devices simultaneously, press the **P-in-P** button on the remote control to enable picture-in-picture mode. Press and hold the **P-in-P** button for three seconds to switch the main image and sub-screen, or press the **P-in-P** button again to disable picture-in-picture mode.

See the online *User's Guide* for more information on adjusting and configuring the WirelessHD connection and display modes.

Troubleshooting

If you see a blank screen or the **No signal** message after turning on your video device or computer, check the following:

- Make sure the power light on the projector is blue and not flashing.
- Press the **Source** button on the projector or one of the Source buttons on the remote control to switch to the correct image source, if necessary.
- If you're using a Windows® laptop, press the function key on your keyboard that lets you display on an external monitor. It may be labeled **CRT/LCD** or have an icon such as . You may have to hold down the **Fn** key while pressing it (such as **Fn + F7**). Wait a moment for the display to appear.
- If you're using a Mac laptop, open **System Preferences** and select **Displays**. Click the **Arrangement** tab and select the **Mirror Displays** checkbox.

If 3D images aren't displaying properly, check the following:

- Press the **3D Format** button to switch to 3D viewing mode, if necessary.
- Make sure to wear the 3D glasses within 32 feet (10 m) of the projector.
- Check that your 3D glasses have not entered standby mode. Slide the power switch on the 3D glasses into the **Off** position, then back to the **On** position.
- Press the **Menu** button on your remote control, select the **Signal** menu, then **3D Setup**, then select **3D Format**. Make sure that the **Auto** option is selected. You may also need to set the **3D Depth** and **Diagonal Screen Size** setting in the Signal menu. See the online *User's Guide* for more information.
- Check that your video device and media are both 3D-compatible. Refer to the documentation that came with your video device for more information.

If WirelessHD content isn't displaying properly, check the following:

- Check that the **Link** light on the transmitter is lit. If the light is flashing slowly, the transmitter could not connect with the projector and has entered standby mode. Verify that the projector is turned on and that all cables are properly connected as shown in the "Connect the projector" section. You may also need to press the **Input** button several times before the **Link** light turns on.
- Make sure the WirelessHD Transmitter is within 32 feet (10 m) of the projector, is facing the front of the projector, isn't obstructed by any large objects, and is not placed on a metal surface.
- If you are viewing wireless content, make sure that the **WiHD** light on the transmitter is lit. If it isn't, press the **Output** button on the remote control or transmitter.

If the keystone correction feature doesn't correct the image, make sure you first set the lens to the center-top position using the horizontal and vertical lens shift dials.

Where to get help

Manuals

For more information about using the projector, click the icons on your desktop to access the online manuals (requires an Internet connection). If you don't have icons to the manuals, you can install them from the projector CD or go to the Epson website, as described below.

Telephone support services

To use the Epson® PrivateLine® Support service, call (800) 637-7661. This service is available for the duration of your warranty period. You may also speak with a support specialist by calling (562) 276-4394 (U.S.) or (905) 709-3839 (Canada).

Support hours are 6 AM to 8 PM, Pacific Time, Monday through Friday, and 7 AM to 4 PM, Pacific Time, Saturday. Days and hours of support are subject to change without notice. Toll or long distance charges may apply.

Internet support

Visit epson.com/support (U.S.) or epson.ca/support (Canada) for solutions to common problems. You can download utilities and documentation, get FAQs and troubleshooting advice, or e-mail Epson.

Registration

Register today to get product updates and exclusive offers. You can use the CD included with your projector or register online at epson.com/webreg.

Optional accessories

For a list of optional accessories, see the online *User's Guide*.

You can purchase RF 3D glasses (part number V12H548006) or other accessories from an Epson authorized reseller. To find the nearest reseller, call 800-GO-EPSON (800-463-7766). Or you can purchase online at epsonstore.com (U.S. sales) or epson.ca (Canadian sales).

Notices

Bluetooth Safety and Specifications

Contains Bluetooth module model: DBUB-E207

This document provides safety instructions and describes the specifications. Read this document carefully before use to ensure your safety and product performance.

U.S.

FCC Notices

Contains FCC ID: BKMAE-E207

This device complies with Part 15 of the FCC Rules. Operation is subject to the following two conditions: (1) This device may not cause harmful interference, and (2) this device must accept any interference received, including interference that may cause undesired operation.

This equipment has been tested and found to comply with the limits for a Class B digital device, pursuant to Part 15 of the FCC Rules. These limits are designed to provide reasonable protection against harmful interference in a residential installation. This equipment generates, uses and can radiate radio frequency energy and, if not installed and used in accordance with the instructions, may cause harmful interference to radio communications. However, there is no guarantee that interference will not occur in a particular installation. If this equipment does cause harmful interference to radio or television reception, which can be determined by turning the equipment off and on, the user is encouraged to try to correct the interference by one of the following measures:

- Reorient or relocate the receiving antenna.
- Increase the separation between the equipment and receiver.
- Connect the equipment into an outlet on a circuit different from that to which the receiver is connected.
- Consult the dealer or an experienced radio/TV technician for help.

Caution: Changes or modifications not expressly approved by the party responsible for compliance could void the user's authority to operate this equipment.

This transmitter must not be co-located or operating in conjunction with any other antenna or transmitter.

Properly shielded cables must be used for connections to LCD Projector in order to meet FCC emission limits. The cable for peripheral with a ferrite core must be used for RF interference suppression.

Radiation Exposure Statement:

This equipment complies with FCC radiation exposure limits set forth for an uncontrolled environment. This equipment should be installed and operated with minimum distance 20cm between the radiator & your body.

Canada

Industry Canada (IC) Notices

Contains IC: 1052D-E207

This Class B digital apparatus complies with Canadian ICES-003.

CAN ICES-3(B)/NMB-3(B)

This device complies with RSS-210 of the Industry Canada Rules. Operation is subject to the following two conditions: (1) This device may not cause harmful interference, and (2) this device must accept any interference received, including interference that may cause undesired operation.

Radiation Exposure Statement:

This equipment complies with IC radiation exposure limits set forth for an uncontrolled environment. This equipment should be installed and operated with minimum distance 20 cm between the radiator & your body.

EPSON
EXCEED YOUR VISION



EPSON and PowerLite are registered trademarks, and EPSON Exceed Your Vision is a registered logomark of Seiko Epson Corporation. PrivateLine is a registered trademark of Epson America, Inc.

Mac is a trademark of Apple Inc., registered in the U.S. and other countries.

General Notice: Other product names used herein are for identification purposes only and may be trademarks of their respective owners. Epson disclaims any and all rights in those marks.

This information is subject to change without notice.

© 2014 Epson America, Inc., 7/14
Printed in XXXXXX

CPD-41443