

# PowerLite® 9x Series

Projectors

Performance

**97**

XGA Resolution

**98**

XGA Resolution  
Ultra Bright

**99W**

WXGA Resolution  
Ultra Bright



99W shown

## Network connectivity and control for today's classroom

**3x Brighter Colors<sup>1</sup>, and reliable performance** — 3LCD, 3-chip technology

**One measurement of brightness is not enough** — look for both high color brightness and high white brightness. The PowerLite 97, 98 and 99W have:

**Color Brightness** — 2700 to 3000 lumens<sup>2</sup>

**White Brightness** — 2700 to 3000 lumens<sup>2</sup>

**Impressive image quality** — available in native XGA and WXGA (widescreen) resolutions

**Manage projectors and present remotely** — easy network connectivity; software included

**Moderator software** — wirelessly control which personal devices are displayed

**Wireless** — project from your iPhone®, iPad® and Android™ mobile devices with the Epson iProjection™ App<sup>3</sup>

**HDMI digital connectivity** — up to HD quality video and audio with just one cable

**Easily engage your students** — built-in 16 W speaker and microphone input; or, use external speakers, even in Standby Mode





## Network connectivity and control for today's classroom

Featuring network connectivity and exceptional image quality, the PowerLite 97, 98 and 99W each present a smart choice for virtually any classroom. Offering 3x Brighter Colors<sup>1</sup> than competitive models, Epson 3LCD projectors ensure bright, vivid lessons. Reliable and easy to use, this PowerLite 9x Series includes options for XGA or widescreen WXGA resolutions. Project and control content from multiple devices and easily share students' work. It's the perfect way for everyone in the BYOD classroom to collaborate. These versatile projectors are even equipped with HDMI connectivity and premium audio features.

### Series at a glance



#### GOOD

##### PowerLite 97

- Color brightness: 2700 lumens<sup>2</sup>
- White brightness: 2700 lumens<sup>2</sup>
- XGA resolution (1024 x 768)
- Network connectivity



#### BETTER

##### Step up to PowerLite 98

- Color brightness: 3000 lumens<sup>2</sup>
- White brightness: 3000 lumens<sup>2</sup>



#### BEST

##### Step up to PowerLite 99W

- Color brightness: 3000 lumens<sup>2</sup>
- White brightness: 3000 lumens<sup>2</sup>
- WXGA widescreen resolution (1280 x 800)

## Amazing image quality



PowerLite 97

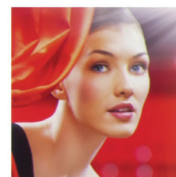


PowerLite 98/99W

### 3x Brighter Colors with Epson<sup>1</sup>

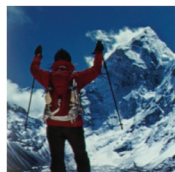
Brilliant image quality requires high color brightness (color light output), and Epson 3LCD projectors have 3x Brighter Colors than leading competitive projectors.<sup>1</sup>

One brightness measurement (lumens) is not enough. A projector's specification needs to show both high color brightness and high white brightness. If color brightness is lower than white brightness, images may be dark, dull and lose detail. If not provided, be sure to ask for a projector's color brightness specification.



#### EPSON

High color brightness and high white brightness



#### COMPETITOR

Color brightness significantly lower than white brightness

Actual photographs of projected images from an identical signal source. Price, resolution and white brightness are similar for both projectors (Epson 3LCD and 1-chip DLP competitor). Both projectors are set to their brightest mode.



### 3LCD — The #1 projection technology in the world

- All 3LCD projectors have both high color brightness and high white brightness
- All 3LCD projectors have 3 chips
- 25% lower power consumption for lower energy costs<sup>4</sup>
- 20 years of road-tested reliability



### Remarkable resolution for brilliant clarity and detail

Resolution defines the level of detail and depth you'll see in a projected image. It's measured as the number of pixels wide by the number of pixels high. The more pixels, the better the detail.

**1.5x more**  
resolution than SVGA



SVGA (800 x 600)

Meets basic projection needs



XGA (1024 x 768)

Ensures sharper detail

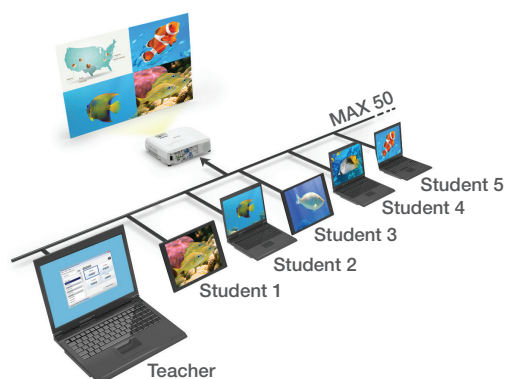
**2x more**  
resolution than SVGA



WXGA (1280 x 800)

Offers high-definition and is ideal for widescreen (16:10) displays

## Classroom collaboration and connectivity



Supports BYOD  
classroom collaboration

### Networking features that take teaching to the next level

- Manage up to 1024 Epson networked projectors using the included EasyMP® software or Crestron® RoomView® — saves time and money
- Send updates or announcements remotely to up to 1024 Epson networked projectors using the Message Broadcasting plug-in for EasyMP
- Connect your projector to an access point to share it with the entire class, without running more cables

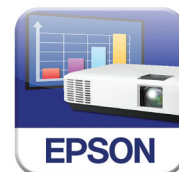
### Teaching tools

- Support BYOD classroom collaboration using Epson's Moderator software
  - Present up to four different device screens to the entire class
  - Connect up to 50 Windows®, Mac®, iOS or Android devices
  - Encourage and control classroom collaboration
- Change presenters wirelessly via Windows, Mac, iOS or Android devices

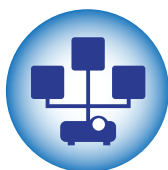
### Share from your tablet or smartphone

Display from your iOS or Android mobile device with the free Epson iProjection App and any nearby wireless Epson projector.<sup>3</sup>

- Control your presentation with just a touch of the screen
- Advance through PowerPoint® or Keynote presentations
- Zoom in and out of PDF, Excel® and Word® documents
- Project Web pages and view brilliant, high-quality images



Free Epson  
iProjection App



Easy MP  
network  
projection

### Choose the function/connection that's right for you

	<b>SINGLE CONNECTION</b> Wireless Ad Hoc*	<b>GOOD</b> RJ-45 Hardwired	<b>BETTER</b> Wireless Infrastructure*	<b>BEST</b> Hardwired RJ-45 with Access Point	Epson Software Needed
Message Broadcast		✓	✓	✓	Message Broadcasting Plug-In
Present Over the Network	✓ **	✓	✓	✓	EasyMP Network Projection
Moderator Functionality		✓	✓	✓	Moderator Function
iOS or Android Wireless Connection	✓ **		✓	✓	Epson iProjection App for iOS or Android
Projector Monitor and Control		✓	✓	✓	EasyMP Monitor Utility

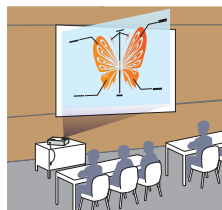
\*Optional wireless module required

\*\*Internet access unavailable in Ad Hoc/Quick Connect mode. Not all Android devices are compatible. See owner's manual for capabilities.

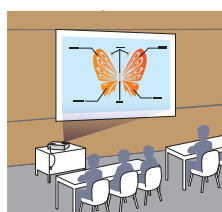


## Easy to use

### Flexible positioning



Without horizontal keystone



With horizontal keystone

### Simple Setup Suite from Epson

Epson projectors offer a suite of innovative features that ensure flexible placement and fast, easy setup.

- **HDMI connectivity** Get both audio and brilliant video quality with just one cable. Compatible with the latest laptops, Blu-ray® and media players.
- **Convenient lens control** Optimize the image size whether your projector is close to the screen or far away, with the 1.6x optical zoom.
- **Easy image adjustments** Position your projector almost anywhere and still get a correctly proportioned image, with keystone correction and easy-slide controls.
- **Quick Corner®** This innovative feature allows you to move any of the four corners of an image independently, to adjust each corner for a perfectly rectangular picture.
- **Advanced 3-in-1 USB Plug 'n Play instant setup** Instantly project audio and video from a PC or Mac via a USB connection.
- **Quick, convenient control** Instant Off® means no cool-down time required; it's ready to shut down when you are.



### Built-in closed captioning

- Helps meet ADA 508 requirements for students with hearing impairments
- No need to pay for an additional decoder and its installation

## Save energy and more



Energy saving features right at your fingertips

### Energy-efficient, long-life lamp

- Epson lamps maximize viewing time while minimizing the total cost of ownership
- Epson's unique lamp design saves energy — lamp lasts up to 6000 hours<sup>6</sup>
- Replacement lamps available at a low cost

### Easily conserve power

- **ECO Mode** — operates the projector in a lower brightness setting
- **Sleep Mode (A/V Mute)** — control your presentation; it's right at your fingertips
- **Direct Power Off/On** — power the projector on/off with the flip of a wall switch
- **Standby audio out** — continue to pass audio out to an external speaker and play your audio even when the projector is "off" (in Standby Mode)
- **Standby microphones** — use a connected wired or wireless microphone, amplified through the built-in speakers, even while the projector is in Standby Mode
- **Schedule function** — control the projector at non-networked venues; the embedded "clock" inside the projector enables it to schedule tasks without having the "Network Standby Mode" on

# PowerLite 9x Series 3LCD Projectors 97/98/99W

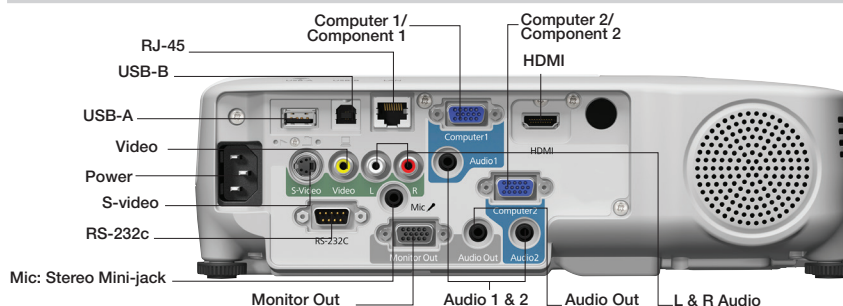
## Specifications

**Projection System** 3LCD, 3-chip technology  
**Projection Method** Front/rear/ceiling mount  
**Driving Method** Poly-silicon TFT Active Matrix  
**Pixel Number**  
 97/98: 786,432 dots (1024 x 768) x 3  
 99W: 1,024,000 dots (1280 x 800) x 3  
**Color Brightness<sup>2</sup>** Color Light Output  
 97: 2700 lumens  
 98/99W: 3000 lumens  
**White Brightness<sup>2</sup>** White Light Output  
 97: 2700 lumens  
 98/99W: 3000 lumens  
**Aspect Ratio** 97/98: 4:3, 99W: 16:10  
**Native Resolution**  
 97/98: 1024 x 768 (XGA)  
 99W: 1280 x 800 (WXGA)  
**Resize**  
 640 x 480 (VGA), 800 x 600 (SVGA), 1024 x 768 (XGA/99W only), 1280 x 800 (WXGA/ 97 and 98 only), 1280 x 960 (SXGA2), 1280 x 1024 (SXGA3), 1366 x 768 (WXGA60-3), 1400 x 1050 (SXGA+), 1440 x 900 (WXGA+), 1680 x 900 (WXGA++), 1600 x 1200 (UXGA60)  
**Lamp Type** 200 W UHE  
**Lamp Life<sup>6</sup>**  
 Up to 6000 hours (ECO Mode)  
 Up to 5000 hours (Normal Mode)  
**Throw Ratio Range**  
 97/98: 1.48 (Zoom:Wide), 1.77 (Zoom:Tele)  
 99W: 1.30 (Zoom:Wide), 1.56 (Zoom:Tele)  
**Size (projected distance)**  
 97/98: 30" to 300" (0.7 to 7.6 m)  
 99W: 33" to 318" (0.8 to 8.0 m)  
**Keystone Correction**  
 Vertical: ± 30 degrees (Automatic)  
 Horizontal: ± 30 degrees (Slider)  
**USB Plug 'n Play**  
 Projector is compatible with PC and Mac computers  
**Contrast Ratio** Up to 10,000:1  
**Color Reproduction** Up to 1 billion colors

## Projection Lens

**Type** Optical zoom (Manual)/ Focus (Manual)  
**F-number** 1.58 – 1.72  
**Focal Length** 16.9 – 20.28 mm  
**Zoom Ratio** 1.0 – 1.2

## Interfaces



## Other

**Display Performance** NTSC: 480 lines PAL: 576 lines  
 (Depends on observation of the multi-burst pattern)  
**Input Signal** NTSC/NTSC4.43/PAL/M-PAL/N-PAL/PAL60/SECAM  
**Speaker** 16 W (mono)  
**Operating Temperature** 41 ° to 95 °F (5 ° to 35 °C)  
**Power Supply Voltage** 100 – 240 V AC ±10%, 50/60 Hz  
**Power Consumption**  
 294 W (Normal Mode)  
 245 W (ECO Mode)  
 2.9 W Standby (Communication On)  
 0.36 W Standby (Communication Off)  
**Fan Noise**  
 37 dB (Normal Mode)  
 29 dB (ECO Mode)  
**Security** Kensington®- style lock provision, padlock and security anchor bar

## Dimensions (W x D x H)

**Including feet** 11.6" x 9.7" x 3.5"  
**Excluding feet** 11.6" x 9.6" x 3.4"  
**Weight** 6 lb (2.7 kg)

## Remote Control

**Features**  
 Brightness, Contrast, Tint, Saturation, Sharpness, Input signal, Sync, Tracking, Position, Color temperature, Volume  
**Operating Angle**  
 Right/left: ± 30 degrees  
 Upper/lower: ± 15 degrees  
**Operating Distance** 19.7' (6 m)

## Eco Features

RoHS compliant  
 Recyclable product<sup>7</sup>  
 Epson America, Inc. is a SmartWay<sup>SM</sup> Transport Partner<sup>8</sup>

## Support

**The Epson Connection<sup>SM</sup>**  
 Pre-sales support  
 (U.S. and Canada): 800-463-7766  
 Internet website: [www.epson.com](http://www.epson.com)  
**Service Programs**  
 Two-year projector limited warranty, Epson Road Service program, PrivateLine<sup>®</sup> dedicated toll-free support and 90-day lamp limited warranty

## What's in the Box

PowerLite 97, 98 or 99W projector, power cord, computer cable (VGA), projector remote control, batteries, user manual CD, Quick Setup Sheet, warranty card, password protect sticker

## Ordering Information

Product Name	Product Code
PowerLite 97 projector	V11H576020
PowerLite 98 projector	V11H577020
PowerLite 99W projector	V11H578020
Accessories	Product Code
Genuine Epson lamp (ELPLP78)	V13H010L78
Replacement air filter (ELPAF32)	V13H134A32
Wireless LAN module (ELPAP07)	V12H418P12
Quick Connect USB key (ELPAP09)	V12H005M09

1 Compared to leading 1-chip DLP business and education projectors based on NPD data, July 2011 through June 2012. Color brightness (color light output) measured in accordance with IDMS 15.4. Color brightness will vary depending on usage conditions.

2 Color brightness (color light output) and white brightness (white light output) will vary depending on usage conditions. Color light output measured in accordance with IDMS 15.4; white light output measured in accordance with ISO 21118.

3 Check your owner's manual to determine if a wireless LAN module must be purchased separately to enable wireless connection on your Epson projector. Epson projectors can be networked either through the Ethernet port on the projector (check model specifications for availability) or via a wireless connection. Not all Epson projectors are able to be networked. Availability varies depending on model.

4 Data source: ProjectorCentral.com Jan. 2013. Average of 1128 shipping models for which the manufacturers provided lumens and total power data, all resolutions and brightness levels. Energy efficiency was measured as wattage per lumen. It was measured for both 3LCD and 1-chip projectors in each of five brightness segments. 3LCD projectors averaged less required electricity per lumen in each of the five segments.

5 Among people who had a preference, 9 out of 10 preferred images from 3LCD projectors over leading 1-chip DLP business and education projectors. Leading projectors selected according to NPD data as of July 2013. Based on independent U.S. research conducted by Radius Research (July 2013).

6 ECO Mode is up to 6000 hours. Normal Mode is up to 5000 hours. Lamp life will vary depending upon mode selected, environmental conditions and usage. Lamp brightness decreases over time.

7 See our website for convenient and reasonable recycling options at [www.epson.com/recycle](http://www.epson.com/recycle)

8 SmartWay is an innovative partnership of the U.S. Environmental Protection Agency that reduces greenhouse gases and other air pollutants and improves fuel efficiency.

**Better Products for a Better Future<sup>™</sup>**  
[eco.epson.com](http://eco.epson.com)



**Epson America, Inc.**  
 3840 Kilroy Airport Way, Long Beach, CA 90806

**Epson Canada Limited**  
 185 Renfrew Drive, Markham, Ontario L3R 6G3

**www.epson.com**  
**www.epson.ca**

EPSON, EasyMP, Instant Off, PowerLite and Quick Corner are registered trademarks, EPSON Exceed Your Vision is a registered logomark and Better Products for a Better Future and Epson iProjection are trademarks of Seiko Epson Corporation. PrivateLine is a registered trademark, Built to Perform is a trademark and Epson Connection is a service mark of Epson America, Inc. iPad, iPhone and Mac are trademarks of Apple Inc., registered in the U.S. and other countries. SmartWay is a service mark of the U.S. Environmental Protection Agency. All other product and brand names are trademarks and/or registered trademarks of their respective companies. Epson disclaims any and all rights in these marks. Copyright 2013 Epson America, Inc. CPD-39704 9/13