



# VP 747 Command Set

**\*Notice:**

1. The RS-232 command is for VP-747 only.
2. The blue highlight  means the latest update
3. The yellow highlight  means the deleted item

## 1 Serial Configuration:

- Baud rate : 9600 / 115200 (Bits per second)
- Data bits : 8bits
- Parity : None
- Stop bits : 1bit

## 2 Command Format:

### 2.1 Communication confirm

Send	CR
Reply	CRLF>

### 2.2 Set Command

Send	Y□Control_Type□Function□ParamCR
Reply	Z□Control_Type□Function□ParamCRLF>

### 2.3 Get Command

Send	Y□Control_Type□FunctionCR
Reply	Z□Control_Type□Function□ParamCRLF>

### 2.4 Example: set Preview Source Type of Current Channel = RGBHV

Send	Y□0□43□0CR
Reply	Z□0□43□0CRLF>

### 2.5 Example: get Preview Source Type of Current Channel

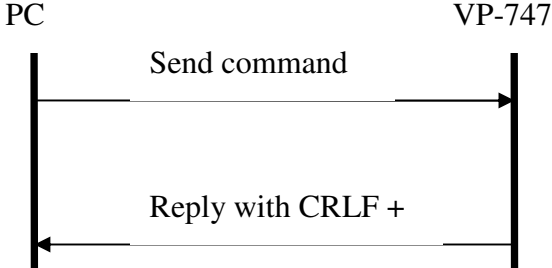
Send	Y□1□43CR
Reply	Z□1□43□0CRLF >

### 2.6 □ : ASCII Code 0x20

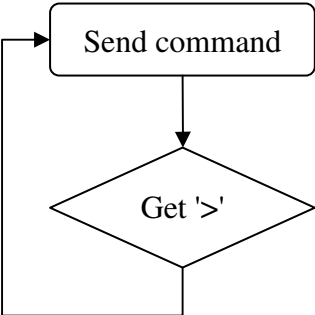
### 2.7 CR : Ascii Code 0x0D

### 2.8 CRLF : Ascii Code 0x0d+0x0A

**2.9 Communication flow**



**2.10 Communication limitation**



### 3 Command List:

Control Type		Function	Param1	Param2	Param3	Param4	Description
Set	Get						
0	1	0	0:Off 1:On	-	-	-	Power
0	1	1	0:Off 1:On	-	-	-	Panel Lock
0	-	2	-	-	-	-	Take
0	-	3	-	-	-	-	Cut
0	-	4	-	-	-	-	Fade
0	-	5	-	-	-	-	Diagonal
0	-	6	-	-	-	-	Wipe
0	-	7	-	-	-	-	Circle
0	-	8	-	-	-	-	Square
0	-	9	-	-	-	-	Corner
0	-	10	-	-	-	-	Chessboard
0	-	11	-	-	-	-	Preview Picture
0	1	12	0:Off 1:On	-	-	-	Preview Freeze
0	1	13	0:Off 1:On	-	-	-	Preview Blank
0	-	14	-	-	-	-	Program Picture
0	1	15	0:Off 1:On	-	-	-	Program Freeze
0	1	16	0:Off 1:On	-	-	-	Program Blank

Control Type		Function	Param1	Param2	Param3	Param4	Description
Set	Get						
0	-	17	-	-	-	-	Up
0	-	18	-	-	-	-	Down
0	-	19	-	-	-	-	Left
0	-	20	-	-	-	-	Right
0	-	21	-	-	-	-	Menu
0	-	22	-	-	-	-	Enter
0	1	23	0: Off 1: On	-	-	-	OSD
0	1	41	0: Channel 1 1: Channel 2 2: Channel 3 3: Channel 4 4: Channel 5 5: Channel 6 6: Channel 7 7: Channel 8	-	-	-	Preview Input Source
0	1	42	0: RGBHV 1: RGBS(PC) 2: RGSB(PC) 3: RGBS(Video) 4: RGSB(Video) 5: YCbCr 6: Y/C 7: Video 8: HDMI	-	-	-	Preview Input Type * HDMI type only can be select when Channel 1 or Channel 2

Control Type		Function	Param1	Param2	Param3	Param4	Description
Set	Get						
0	1	43	0: Auto 1: NTSC 2: PAL 3: PAL-M 4: PAL-N 5: NTSC 4.43 6: SECAM 7: PAL 60	-	-	-	Preview Input Video Standard
0	1	44	1 ~ N	-	-	-	Preview Input Main Source H-Position N:unfixed , will change with Input Mode
0	1	45	2 ~ N	-	-	-	Preview Input Main Source V-Position N:unfixed , will change with Input Mode
0	1	46	-A ~ A	-	-	-	Preview Input Frequency A = (max - min)/2 min = 0 , max = will change with input mode
0	1	47	0 ~ 31	-	-	-	Preview Input Phase (only for VGA Source)
0	-	48	-	-	-	-	Preview Auto Image
0	1	49	0: Off 1: On	-	-	-	Preview Over Scan Status
0	1	50	-50 ~ 50	-	-	-	Preview Picture Brightness
0	1	51	-50 ~ 50	-	-	-	Preview Picture Contrast
0	1	52	-50 ~ 50	-	-	-	Preview Picture Color
0	1	53	-180 ~ 180	-	-	-	Preview Picture Hue
0	1	54	-50 ~ 50	-	-	-	Preview Picture Sharpness
0	1	55	0: Gamma 1	-	-	-	Preview Picture Output Gamma

Control Type		Function	Param1	Param2	Param3	Param4	Description
Set	Get						
			1: Gamma 2 2: Gamma 3 3: Gamma 4 4: Gamma 5				
0	1	56	0: Auto 1: Video 2: Film	-	-	-	Preview Picture Film Mode
0	1	57	0: Off 1: Low 2: Medium 3: High	-	-	-	Preview Picture Temporal NR
0	1	58	0: Off 1: Low 2: Medium 3: High	-	-	-	Preview Picture Mosquito NR
0	1	59	0: Off 1: On	-	-	-	Preview Picture Block NR
0	1	60	0: Off 1: Low 2: Medium 3: High	-	-	-	Preview Picture Detail Enhancement
0	1	61	0: Off 1: Low 2: High	-	-	-	Preview Picture Luma Transition Enhance
0	1	62	0: Off	-	-	-	Preview Picture Chroma Transition

Control Type		Function	Param1	Param2	Param3	Param4	Description
Set	Get						
			1: Low 2: High				Enhance
0	1	63	0: Best Fit 1: Letterbox 2: Follow Output 3: Virtual Wide 4: Follow Input 5: Custom	-	-	-	Preview Scale Aspect Ratio
0	1	64	-16 ~ 16	-	-	-	Preview Scale H-Pan
0	1	65	-16 ~ 16	-	-	-	Preview Scale V-Pan
0	1	66	-8 ~ 8	-	-	-	Preview Scale H-Zoom
0	1	67	-8 ~ 8	-	-	-	Preview Scale V-Zoom
0	1	68	0: Off 1: 150% 2: 200% 3: 225% 4: 250% 5: 275% 6: 300% 7: 325% 8: 350% 9: 375% 10: 400% 11: Custom	-	-	-	Preview Scale Zoom
0	1	69	0 ~ 32	-	-	-	Preview Scale Custom Zoom



Control Type		Function	Param1	Param2	Param3	Param4	Description
Set	Get						
0	1	70	-16 ~ 16	-	-	-	Preview Scale Zoom H-Pan
0	1	71	-16 ~ 16	-	-	-	Preview Scale Zoom V-Pan
0	1	72	0: Off 1: On	-	-	-	Preview PIP On/Off
0	1	73	0: Picture-In-Picture 1: Picture + Picture 2: Split	-	-	-	Preview PIP Type
0	1	74	0: Channel 1 1: Channel 2 2: Channel 3 3: Channel 4 4: Channel 5 5: Channel 6 6: Channel 7 7: Channel 8	-	-	-	Preview PIP Source
0	1	75	0: 1/25 1: 1/16 2: 1/9 3: 1/4 4: Custom	-	-	-	Preview PIP Size
0	1	76	0 ~ 128	-	-	-	Preview PIP H-Position
0	1	77	0 ~ 128	-	-	-	Preview PIP V-Position
0	1	78	1 ~ 255	-	-	-	Preview PIP H-Size
0	1	79	1 ~ 255	-	-	-	Preview PIP V-Size
0	1	80	0: Off	-	-	-	Preview PIP Frame

Control Type		Function	Param1	Param2	Param3	Param4	Description
Set	Get						
			1: On				
0	1	81	0:Red 1:Green 2:Blue	-	-	-	Preview PIP Frame Color
0	1	82	0: Native 1: 640x480 x60Hz 2: 640x480 x75Hz 3: 800x600 x50Hz 4: 800x600 x60Hz 5: 800x600 x75Hz 6: 832x624 x75Hz 7: 852x480 x60Hz 8: 1024x768 x50Hz 9: 1024x768 x60Hz 10: 1024x768 x75Hz 11: 1280x720 x60Hz 12: 1280x768 x50Hz 13: 1280x768 x60Hz 14: 1280x800 x60Hz 15: 1280x1024x50Hz 16: 1280x1024x60Hz 17: 1280x1024x75Hz 18: 1366x768x50Hz 19: 1366x768x60Hz 20: 1400x1050x50Hz	-	-	-	Preview Output Resolution

Control Type		Function	Param1	Param2	Param3	Param4	Description
Set	Get						
			21: 1400x1050x60Hz 22: 1440x900x60Hz 23: 1600x1200x50Hz 24: 1600x1200x60Hz 25: 1680x1050x60Hz 26: 1920x1080x50Hz 27: cvt-r 1920x1080x60Hz 28: 1920x1200x60Hz 29: 480p 30: 576p 31: 720px50Hz 32: 720px60Hz 33: 1080ix50Hz 34: 1080ix60Hz 35: 1080px50Hz 36: 1080px60Hz 37: 1080px24Hz 38: Custom 1 39: Custom 2 40: Custom 3 41: Custom 4				
0	1	83	-100 ~ 100	-	-	-	Preview Red Saturation
0	1	84	-100 ~ 100	-	-	-	Preview Green Saturation
0	1	85	-100 ~ 100	-	-	-	Preview Blue Saturation
0	1	86	-100 ~ 100	-	-	-	Preview Cyan Saturation

Control Type		Function	Param1	Param2	Param3	Param4	Description
Set	Get						
0	1	87	-100 ~ 100	-	-	-	Preview Magenta Saturation
0	1	88	-100 ~ 100	-	-	-	Preview Yellow Saturation
0	1	89	0: Custom 1 1: Custom 2 2: Custom 3 3: Custom 4	-	-	-	Preview Custom Input Target
0	1	90	512 ~ 3071	-	-	-	Preview Input Setting User Mode HT
0	1	91	32 ~ (HS-48)	-	-	-	Preview Input Setting User Mode HW
0	1	92	80~(HT-HA-12)	-	-	-	Preview Input Setting User Mode HS
0	1	93	640~1920 <= (HT-92)	-	-	-	Preview Input Setting User Mode HA
0	1	94	0: - 1: +	-	-	-	Preview Input Setting User Mode HP
0	1	95	384~2047	-	-	-	Preview Input Setting User Mode VT
0	1	96	2~(HS-13)	-	-	-	Preview Input Setting User Mode VW
0	1	97	15~(VT-VA-1)	-	-	-	Preview Input Setting User Mode VS
0	1	98	480~1200 <= (VT-16)	-	-	-	Preview Input Setting User Mode VA
0	1	99	0: - 1: +	-	-	-	Preview Input Setting User Mode VP
0	1	100	25 ~ 165 (Integer Value)	0 ~ 999 (Decimal Value)	-	-	Preview Input Setting User Mode OCLK
0	1	101	0:Off 1:On	-	-	-	Preview Input Setting Enable
0	-	102	-	-	-	-	Preview Input Setting User Mode Save

Control Type		Function	Param1	Param2	Param3	Param4	Description
Set	Get						
0	1	103	0: Custom 1 1: Custom 2 2: Custom 3 3: Custom 4	-	-	-	Preview Custom Output Target
0	1	104	512 ~ 3071	-	-	-	Preview Output Setting User Mode HT
0	1	105	32 ~ (HS-48)	-	-	-	Preview Output Setting User Mode HW
0	1	106	80~(HT-HA-12)	-	-	-	Preview Output Setting User Mode HS
0	1	107	640 ~ 1920	-	-	-	Preview Output Setting User Mode HA
0	1	108	0: - 1: +	-	-	-	Preview Output Setting User Mode HP
0	1	109	384~2047	-	-	-	Preview Output Setting User Mode VT
0	1	110	2~(HS-13)	-	-	-	Preview Output Setting User Mode VW
0	1	111	15~(VT-VA-1)	-	-	-	Preview Output Setting User Mode VS
0	1	112	480 ~ 1200	-	-	-	Preview Output Setting User Mode VA
0	1	113	0: - 1: +	-	-	-	Preview Output Setting User Mode VP
0	1	114	25 ~ 165 (Integer Value)	0 ~ 999 (Decimal Value)	-	-	Preview Output Setting User Mode OCLK
0	-	115	-	-	-	-	Preview Output Setting User Mode Save
0	-	116	-	-	-	-	Preview Output Setting User Mode Set Current
0	1	117	0:Keystone 1:Anyplace 2:Rotation	-	-	-	Preview Geometry Application
0	1	118	0: Front	-	-	-	Preview Geometry Location

Control Type		Function	Param1	Param2	Param3	Param4	Description
Set	Get						
			1: Ceiling 2: Rear 3: Rear Ceiling				
0	1	119	-40 ~ 40	-	-	-	Preview Geometry H-Keystone
0	1	120	-30 ~ 30	-	-	-	Preview Geometry V-Keystone
0	1	121	0: Top Left 1: Top Right 2: Bottom Left 3: Bottom Right	0: Horizontal 1: vertical	-2000 ~ 2000	-	Preview Geometry Diagonal Projection
0	-	122	-	-	-	-	Preview Geometry Diagonal Projection Reset
0	1	123	-20 ~ 20	-	-	-	Preview Geometry Pincushion/Barrel
0	1	124	-180 ~ 180	-	-	-	Preview Geometry Rotation
0	-	125	-	-	-	-	Preview Geometry Reset all
0	1	151	0: Channel 1 1: Channel 2 2: Channel 3 3: Channel 4 4: Channel 5 5: Channel 6 6: Channel 7 7: Channel 8	-	-	-	Program Input Source
0	1	152	0: RGBHV 1: RGBS(PC) 2: RGSB(PC)	-	-	-	Program Input Type * HDMI type only can be select when Channel 1 or Channel 2

Control Type		Function	Param1	Param2	Param3	Param4	Description
Set	Get						
			3: RGBS(Video) 4: RGsB(Video) 5: YCbCr 6: Y/C 7: Video 8: HDMI				
0	1	153	0: Auto 1: NTSC 2: PAL 3: PAL-M 4: PAL-N 5: NTSC 4.43 6: SECAM 7: PAL 60	-	-	-	Program Input Video Standard
0	1	154	1 ~ N	-	-	-	Program Input Main Source H-Position N:unfixed , will change with Input Mode
0	1	155	2 ~ N	-	-	-	Program Input Main Source V-Position N:unfixed , will change with Input Mode
0	1	156	-A ~ A	-	-	-	Program Input Frequency A = (max - min)/2 min = 0 , max = will change with input mode
0	1	157	0 ~ 31	-	-	-	Program Input Phase (only for VGA Source)
0	-	158	-	-	-	-	Program Auto Image
0	1	159	0: Off	-	-	-	Program Over Scan Status

Control Type		Function	Param1	Param2	Param3	Param4	Description
Set	Get						
			1: On				
0	1	160	-50 ~ 50	-	-	-	Program Picture Brightness
0	1	161	-50 ~ 50	-	-	-	Program Picture Contrast
0	1	162	-50 ~ 50	-	-	-	Program Picture Color
0	1	163	-180 ~ 180	-	-	-	Program Picture Hue
0	1	164	-50 ~ 50	-	-	-	Program Picture Sharpness
0	1	165	0: Gamma 1 1: Gamma 2 2: Gamma 3 3: Gamma 4 4: Gamma 5	-	-	-	Program Picture Output Gamma
0	1	166	0: Auto 1: Video 2: Film	-	-	-	Program Picture Film Mode
0	1	167	0: Off 1: Low 2: Medium 3: High	-	-	-	Program Picture Temporal NR
0	1	168	0: Off 1: Low 2: Medium 3: High	-	-	-	Program Picture Mosquito NR
0	1	169	0: Off 1: On	-	-	-	Program Picture Block NR
0	1	170	0: Off	-	-	-	Preview Picture Detail Enhancement



Control Type		Function	Param1	Param2	Param3	Param4	Description
Set	Get						
			1: Low 2: Medium 3: High				
0	1	171	0: Off 1: Low 2: High	-	-	-	Program Picture Luma Transition Enhance
0	1	172	0: Off 1: Low 2: High	-	-	-	Program Picture Chroma Transition Enhance
0	1	173	0: Best Fit 1: Letterbox 2: Follow Output 3: Virtual Wide 4: Follow Input 5: Custom	-	-	-	Program Scale Aspect Ratio
0	1	174	-16 ~ 16	-	-	-	Program Scale H-Pan
0	1	175	-16 ~ 16	-	-	-	Program Scale V-Pan
0	1	176	-8 ~ 8	-	-	-	Program Scale H-Zoom
0	1	177	-8 ~ 8	-	-	-	Program Scale V-Zoom
0	1	178	0: Off 1: 150% 2: 200% 3: 225% 4: 250% 5: 275%	-	-	-	Program Scale Zoom

Control Type		Function	Param1	Param2	Param3	Param4	Description
Set	Get						
			6: 300% 7: 325% 8: 350% 9: 375% 10: 400% 11: Custom				
0	1	179	0 ~ 32	-	-	-	Program Scale Custom Zoom
0	1	180	-16 ~ 16	-	-	-	Program Scale Zoom H-Pan
0	1	181	-16 ~ 16	-	-	-	Program Scale Zoom V-Pan
0	1	182	0: Off 1: On	-	-	-	Program PIP On/Off
0	1	183	0: Picture-In-Picture 1: Picture + Picture 2: Split	-	-	-	Program PIP Type
0	1	184	0: Channel 1 1: Channel 2 2: Channel 3 3: Channel 4 4: Channel 5 5: Channel 6 6: Channel 7 7: Channel 8	-	-	-	Program PIP Source
0	1	185	0: 1/25 1: 1/16 2: 1/9	-	-	-	Program PIP Size

Control Type		Function	Param1	Param2	Param3	Param4	Description
Set	Get						
			3: 1/4 4: Custom				
0	1	186	0 ~ 128	-	-	-	Program PIP H-Position
0	1	187	0 ~ 128	-	-	-	Program PIP V-Position
0	1	188	1 ~ 255	-	-	-	Program PIP H-Size
0	1	189	1 ~ 255	-	-	-	Program PIP V-Size
0	1	200	0: Off 1: On	-	-	-	Program PIP Frame
0	1	201	0:Red 1:Green 2:Blue	-	-	-	Program PIP Frame Color
0	1	202	0: Native 1: 640x480 x60Hz 2: 640x480 x75Hz 3: 800x600 x50Hz 4: 800x600 x60Hz 5: 800x600 x75Hz 6: 832x624 x75Hz 7: 852x480 x60Hz 8: 1024x768 x50Hz 9: 1024x768 x60Hz 10: 1024x768 x75Hz 11: 1280x720 x60Hz 12: 1280x768 x50Hz 13: 1280x768 x60Hz	-	-	-	Program Output Resolution

Control Type		Function	Param1	Param2	Param3	Param4	Description
Set	Get						
			14: 1280x800 x60Hz 15: 1280x1024x50Hz 16: 1280x1024x60Hz 17: 1280x1024x75Hz 18: 1366x768x50Hz 19: 1366x768x60Hz 20: 1400x1050x50Hz 21: 1400x1050x60Hz 22: 1440x900x60Hz 23: 1600x1200x50Hz 24: 1600x1200x60Hz 25: 1680x1050x60Hz 26: 1920x1080x50Hz 27: cvt-r 1920x1080x60Hz 28: 1920x1200x60Hz 29: 480p 30: 576p 31: 720px50Hz 32: 720px60Hz 33: 1080ix50Hz 34: 1080ix60Hz 35: 1080px50Hz 36: 1080px60Hz 37: 1080px24Hz 38: Custom 1				

Control Type		Function	Param1	Param2	Param3	Param4	Description
Set	Get						
			39: Custom 2 40: Custom 3 41: Custom 4				
0	1	203	-100 ~ 100	-	-	-	Program Red Saturation
0	1	204	-100 ~ 100	-	-	-	Program Green Saturation
0	1	205	-100 ~ 100	-	-	-	Program Blue Saturation
0	1	206	-100 ~ 100	-	-	-	Program Cyan Saturation
0	1	207	-100 ~ 100	-	-	-	Program Magenta Saturation
0	1	208	-100 ~ 100	-	-	-	Program Yellow Saturation
0	1	209	0: Custom 1 1: Custom 2 2: Custom 3 3: Custom 4	-	-	-	Program Custom Input Target
0	1	210	512~3071	-	-	-	Program Input Setting User Mode HT
0	1	211	32~(HS-48)	-	-	-	Program Input Setting User Mode HW
0	1	212	80~(HT-HA-12)	-	-	-	Program Input Setting User Mode HS
0	1	213	640~1920 <= (HT-92)	-	-	-	Program Input Setting User Mode HA
0	1	214	0: - 1: +	-	-	-	Program Input Setting User Mode HP
0	1	215	384~2047	-	-	-	Program Input Setting User Mode VT
0	1	216	2~(HS-13)	-	-	-	Program Input Setting User Mode VW
0	1	217	15~(VT-VA-1)	-	-	-	Program Input Setting User Mode VS
0	1	218	480~1200	-	-	-	Program Input Setting User Mode VA

Control Type		Function	Param1	Param2	Param3	Param4	Description
Set	Get						
			<= (VT-16)				
0	1	219	0: - 1: +	-	-	-	Program Input Setting User Mode VP
0	1	220	25 ~ 165 (Integer Value)	0 ~ 999 (Decimal Value)	-	-	Program Input Setting User Mode OCLK
0	1	221	0: Off 1: On	-	-	-	Program Input Setting Enable
0	-	222	-	-	-	-	Program Input Setting User Mode Save
0	1	223	0: Custom 1 1: Custom 2 2: Custom 3 3: Custom 4				Program Custom Output Target
0	1	224	512~3071	-	-	-	Program Output Setting User Mode HT
0	1	225	32~(HS-48)	-	-	-	Program Output Setting User Mode HW
0	1	226	80~(HT-HA-12)	-	-	-	Program Output Setting User Mode HS
0	1	227	640~1920 <= (HT-92)	-	-	-	Program Output Setting User Mode HA
0	1	228	0: - 1: +	-	-	-	Program Output Setting User Mode HP
0	1	229	384~2047	-	-	-	Program Output Setting User Mode VT
0	1	230	2~(HS-13)	-	-	-	Program Output Setting User Mode VW
0	1	231	15~(VT-VA-1)	-	-	-	Program Output Setting User Mode VS
0	1	232	480~1200 <= (VT-16)	-	-	-	Program Output Setting User Mode VA
0	1	233	0: -	-	-	-	Program Output Setting User Mode VP

Control Type		Function	Param1	Param2	Param3	Param4	Description
Set	Get						
			1: +				
0	1	234	25 ~ 165 (Integer Value)	0 ~ 999 (Decimal Value)	-	-	Program Output Setting User Mode OCLK
0	-	235	-	-	-	-	Program Output Setting User Mode Save
0	-	236	-	-	-	-	Program Output Setting User Mode Set Current
0	1	237	0:Keystone 1:Anyplace 2:Rotation				Program Geometry Application
0	1	238	0: Front 1: Ceiling 2: Rear 3: Rear Ceiling	-	-	-	Program Geometry Location
0	1	239	-40 ~ 40	-	-	-	Program Geometry H-Keystone
0	1	240	-30 ~ 30	-	-	-	Program Geometry V-Keystone
0	1	241	0: Top Left 1: Top Right 2: Bottom Left 3: Bottom Right	0:H 1:V	-2000 ~ 2000	-	Program Geometry Diagonal Projection
0	-	242	-	-	-	-	Program Geometry Diagonal Projection Reset
0	1	243	-20 ~ 20	-	-	-	Program Geometry Pincushion/Barrel
0	1	244	-180 ~ 180	-	-	-	Program Geometry Rotation
0	-	245	-	-	-	-	Program Geometry Reset all
0	1	271	0: Cut 1: Fade	-	-	-	Transition Effect

Control Type		Function	Param1	Param2	Param3	Param4	Description
Set	Get						
			2: Diagonal 3: Wipe 4: Circle 5: Square 6: Corner 7: Chessboard				
0	1	272	0:Swap 1:Follow	-	-	-	Transition Mode
0	1	273	1 ~ 5	-	-	-	Transition Speed
0	1	274	0 = no damping 1 = damping with a maximum jump size of 10 steps 2 = damping with a maximum jump size of 5 steps 3 = damping with a maximum jump size of 3 steps 4 = damping with a maximum jump size of 2 steps				Transition Damping
0	1	275	0: Top left 1: Bottom left 2: Top right 3: Bottom right	-	-	-	Transition Effect Option - Diagonal
0	1	276	0: Left to right 1: Right to left 2: Up	-	-	-	Transition Effect Option - Wipe



Control Type		Function	Param1	Param2	Param3	Param4	Description
Set	Get						
			3: Down				
0	1	277	0: In 1: Out	-	-	-	Transition Effect Option - Circle
0	1	278	0: In 1: Out	-	-	-	Transition Effect Option - Square
0	1	279	0: Top left 1: Bottom left 2: Top right 3: Bottom right	-	-	-	Transition Effect Option - Corner
0	1	280	0: In 1: Out	-	-	-	Transition Effect Option - Chessboard
0	-	281	-	-	-	-	Transition Take
0	1	282	0: Off 1: On				TBar Optimization
0	1	286	0: Channel 1 1: Channel 2 2: Channel 3 3: Channel 4 4: Channel 5 5: Channel 6 6: Channel 7 7: Channel 8	-	-	-	Audio Program input source
0	1	287	-82 ~ 45	-	-	-	Audio Program Input Volume, -82 = Mute
0	1	288	-22 ~ 9	-	-	-	Audio Program Output Volume, -22 = Mute
0	1	289	0 ~ 127	-	-	-	Audio Program Input Delay

Control Type		Function	Param1	Param2	Param3	Param4	Description
Set	Get						
0	1	290	0: Channel 1 1: Channel 2 2: Channel 3 3: Channel 4 4: Channel 5 5: Channel 6 6: Channel 7 7: Channel 8	-	-	-	Audio Preview input source
0	1	291	-82 ~ 45	-	-	-	Audio Preview Input Volume, -82 = Mute
0	1	292	-82 ~ 45	-	-	-	Audio Preview Output Volume, -82 = Mute
0	1	293	0: Preview 1: Program	-	-	-	Audio headphone source
0	1	294	-12 ~ 4	-	-	-	Audio Headphone Volume, -12 = Mute
0	1	295	-6 ~ 6	-	-	-	Audio Bass
0	1	296	-6 ~ 6	-	-	-	Audio Treble0
0	1	297	-10 ~ 10	-	-	-	Audio Balance
0	1	298	0: Audio Folow Video 1: Audio Breakaway	-	-	-	Audio Follow Video or Audio Breakaway
0	1	299	0: Off 1: On	-	-	-	Audio Fade
0	1	300	0:None 1:Freeze 2:Blank 3:Freeze&Blank	-	-	-	Audio Mute-Follow
0	1	301	-	-	-	-	Audio TAKE

Control Type		Function	Param1	Param2	Param3	Param4	Description
Set	Get						
0	1	306	0: Off 1: On	-	-	-	TCPIP DHCP
0	1	307	0 ~ 255	0 ~ 255	0 ~ 255	0 ~ 255	TCPIP IP Address
0	1	308	0 ~ 255	0 ~ 255	0 ~ 255	0 ~ 255	TCPIP Subnet Mask
0	1	309	0 ~ 255	0 ~ 255	0 ~ 255	0 ~ 255	TCPIP Gateway
0	-	310	-	-	-	-	TCPIP Apply
0	1	311	0: Center 1: Top Left 2: Top Right 3: Bottom Left 4: Bottom Right	-	-	-	OSD Setting Menu Position
0	1	312	0: 5 second 1: 10 second 2: 20 second 3: 30 second 4: 60 second 5: 90 second 6: off	-	-	-	OSD Setting TimeOut
0	1	313	0: Off 1: On (Kramer)	-	-	-	Misc Setting Logo
0	1	314	0: Off 1: On	-	-	-	Misc Setting Save Lock
0	1	315	0: Off 1: On	-	-	-	Misc Setting Input Lock
0	1	316	0:Blank	-	-	-	Misc Setting Background

Control Type		Function	Param1	Param2	Param3	Param4	Description
Set	Get						
			1:Blue 2:Disable Analog Sync				
0	1	317	0: Black 1: Blue	-	-	-	Misc Setting Blank Color
0	1	318	0:Off 1:On	-	-	-	Misc Setting Event Mode
0	1	319	0:9600 1:115200	-	-	-	Misc Setting Baudrate
0	1	320	0: Follow Output 1: Follow Input	-	-	-	Misc Setting HDCP Setting
0	-	321	0: Profile 1 1: Profile 2 2: Profile 3 3: Profile 4 4: Profile 5 5: Profile 6 6: Profile 7 7: Profile 8	-	-	-	Save
0	-	322	0: Profile 1 1: Profile 2 2: Profile 3 3: Profile 4 4: Profile 5 5: Profile 6 6: Profile 7	-	-	-	Recall

Control Type		Function	Param1	Param2	Param3	Param4	Description
Set	Get						
			7: Profile 8				
0	-	323	0: Profile 1 1: Profile 2 2: Profile 3 3: Profile 4 4: Profile 5 5: Profile 6 6: Profile 7 7: Profile 8 8: All	-	-	-	Erase
0	-	324	-	-	-	-	Factory Reset
0	1	325	0:Mode1 1400x1050@60HZ 1:Mode1 1680x1050@60HZ	-	-	-	Mode Set Mode1
0	1	326	0:Mode2 1280x1024@75HZ 1:Mode2 1280x1024@76HZ	-	-	-	Mode Set Mode2
0	1	327	0:Mode3 1280x768@60HZ 1:Mode3 1366x768@60HZ	-	-	-	Mode Set Mode3
0	1	328	0:Manual (Default) 1:Auto	-	-	-	Auto Image Mode
-	1	329	0~32767 1->ON, 0->OFF bit 0: Chessboard bit 1: Panel lock bit 2: Menu bit 3: Enter	0~32767 1->ON, 0->OFF bit 0: Program Channel 8 bit 1: Preview Freeze bit 2: Program Freeze bit 3: Preview Blank	0~32767 1-> ON, 0->OFF bit 0: Preview Channel 1 bit 1: Program Channel 1 bit 2: Preview Channel 2 bit 3: Program Channel 2	-	Keypad LED status

Control Type		Function	Param1	Param2	Param3	Param4	Description
Set	Get						
			bit 4: Left bit 5: Up bit 6: Down bit 7: Right bit 8: OSD	bit 4: Program Blank bit 5: Preview PIP bit 6: Program PIP bit 7: Take bit 8: Cut bit 9: Diagonal bit 10: Circle bit 11: Corner bit 12: Fade bit 13: Wipe bit 14: Square	bit 4: Preview Channel 3 bit 5: Program Channel 3 bit 6: Preview Channel 4 bit 7: Program Channel 4 bit 8: Preview Channel 5 bit 9: Program Channel 5 bit 10: Preview Channel 6 bit 11: Program Channel 6 bit 12: Preview Channel 7 bit 13: Program Channel 7 bit 14: Preview Channel 8		

#### 4 Error Code

Error code	Description
ERR 1	Unknown command
ERR 2	Unknown function
ERR 3	Unavailable function
ERR 4	Unknown control type
ERR 5	Unavailable get function
ERR 6	Unavailable set function
ERR 7	Unavailable parameter
ERR 8	Too few arguments