

# EV-2100 Quick Start Guide

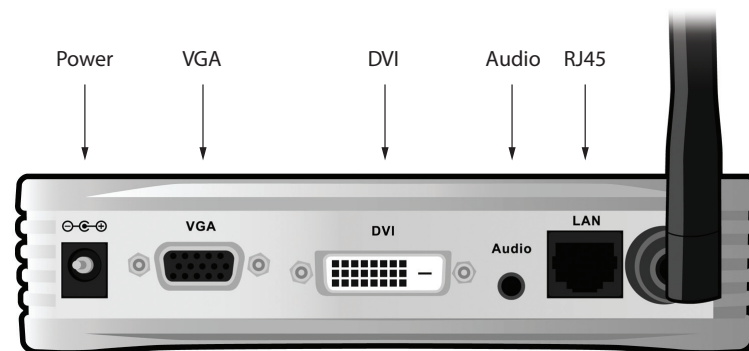
Congratulations and thank you for your EV-2100 purchase. This guide will help you start using your EV-2100 device as quickly as possible. A more extensive User's Manual is included on the enclosed CD.

## InternetVue 2100:



Note: Color scheme may vary

Video Outputs: VGA and DVI  
Audeo Outputs: 3.5mm stereo  
Audio Cable: 3.5 stereo male – male



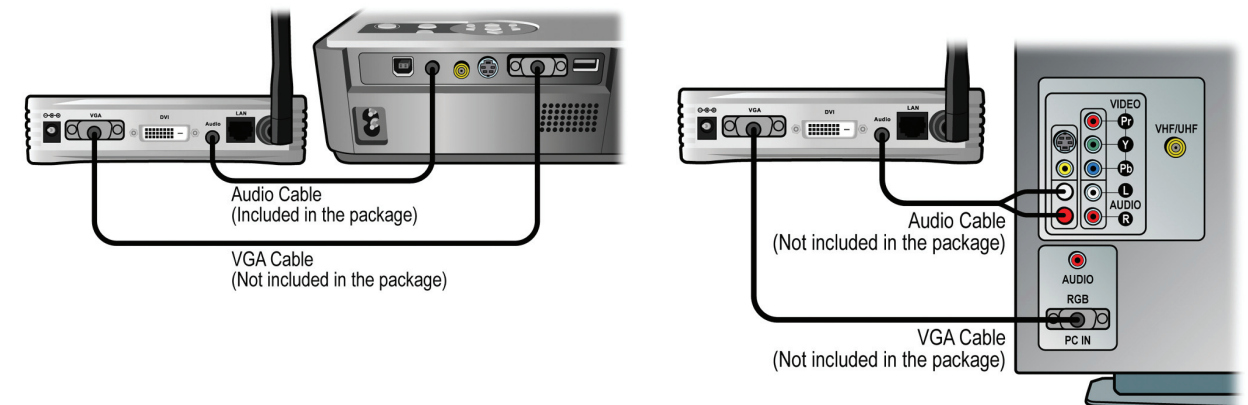
### Overall Requirements:

TV or projector with RGBHV HDB15 (VGA) or DVI-D video inputs

PC running:

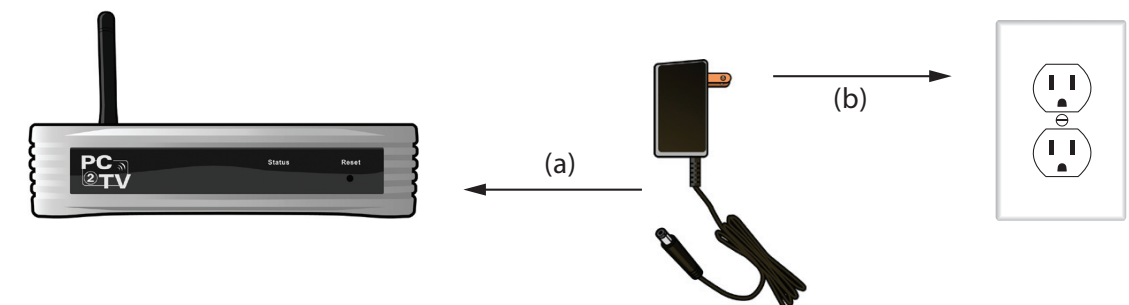
- Windows XP or Vista RC1
- Pentium 4 or M, 1.8 GHz or faster; slower CPUs okay for viewing slow-moving or static images
- 512MB RAM or more (1024MB RAM recommended for Vista)
- Wired (10/100) or wireless (802.11b/g) network connection; WEP, WPA/WPA-PSK with TKIP or AES encryption supported

Make sure that the TV or projector and the EV-2100 is unpowered. Connect the EV-2100 to your TV or projector's associated AV inputs



2

Connect the power adapter to the EV-2100 power jack input first (a), and then plug in the power adapter into and AC outlet (b), Power on your TV or projector and select the associated AV input.

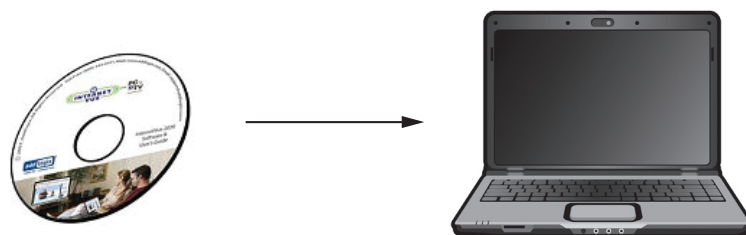


3

In about 30-60 seconds, the EV-2100 will be fully initialized, and the following image will appear on your TV.

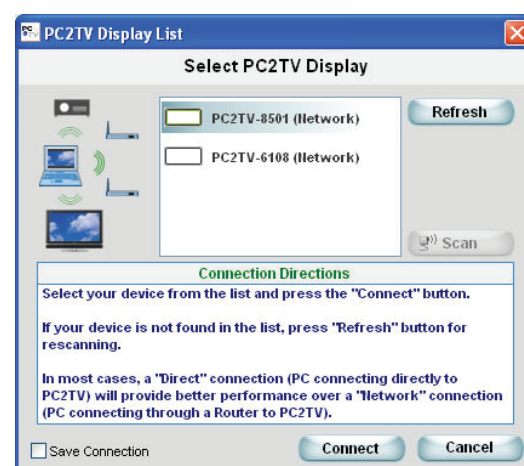


This validates the connection between the EV-2100 and the TV or projector. Next, you can begin the PC2TV software installation onto your computer by inserting the CD into your PC's CD-ROM drive. Follow all onscreen instructions and prompts.



4

Launch the PC2TV application by double-clicking the PC2TV icon on your Windows' desktop. Typically, the EV-2100 will connect automatically unless there are additional receivers on the wired LAN or within wireless range. If this happens, select the EV-2100 by its ID as shown in the previous step.



#### Notes:

- If you require wireless Internet access through a wireless router or access point with security (WEP, WPA, WPA-PSK/TKIP) while connected to the EV-2100, you may be asked to provide the Wireless Key. Write down your wireless settings below for future reference.

Wireless key (if applicable)

#### Network Authentication

- ☐ Open / Shared  
☐ WPA  
☐ WPA-PSK

#### Encryption

- ☐ WEP  
☐ TKIP  
☐ AES

For Internet access using RJ45 wired Ethernet connection, please refer to the User's Manual on the CD.

- PC2TV is a CPU-intensive application. To maximize audio/video performance and quality, close all unnecessary programs. Confirm that your notebook or laptop's power adapter is fully plugged in to ensure full CPU speed.
- PC2TV requires control over your PC's networking subsystem therefore the user must have administrative privileges.