



INSTALLATION INSTRUCTIONS

VCM

VIDEO CEILING MOUNT

Prior to assembly, unpack carton completely and verify contents.

If you are missing any components, please contact Customer Service at 1-800/582-6480

The Deluxe Video Ceiling Mounts are designed to provide fast, simple and secure ceiling installation of video projectors. Special roll, pitch and horizontal adjustments simplify projection positioning for image alignment. The ceiling mount also has positive registration lock so the projector may be removed without losing projector mount registration.

BEFORE PROCEEDING, READ INSTALLATION INSTRUCTIONS COMPLETELY

WARNING!

IMPROPER INSTALLATION CAN RESULT IN SERIOUS PERSONAL INJURY! MAKE SURE THAT THE CEILING STRUCTURAL MEMBERS CAN SUPPORT A REDUNDANT WEIGHT FACTOR FIVE TIMES THE TOTAL WEIGHT OF THE EQUIPMENT. IF THE CEILING CAN NOT SUPPORT THIS WEIGHT, REINFORCE THE CEILING BEFORE INSTALLING THE MOUNT.

INSTALLING THE CEILING MOUNT REQUIRES THE PRESENCE OF TWO PERSONS FAMILIAR WITH MECHANICAL INSTALLATIONS. A THIRD ASSISTANT IS RECOMMENDED.

1. Secure the VCM housing to your method of support and tighten firmly so the VCM is housing is parallel to the screen.
2. Attach the HB-Hanging Bracket according to the instructions accompanying your HB-Hanging Bracket. The model of your projector determines which HB-Hanging Bracket is included with your VCM.
3. Using two people lift the projector and install it to the studs extending from the mounting plate (see Figure 1, item 1). Be sure the HB-Hanging Bracket (2) is seated in the slots.
4. Using a wrench, tighten four 5/16" flange nuts securing slide bracket (6).

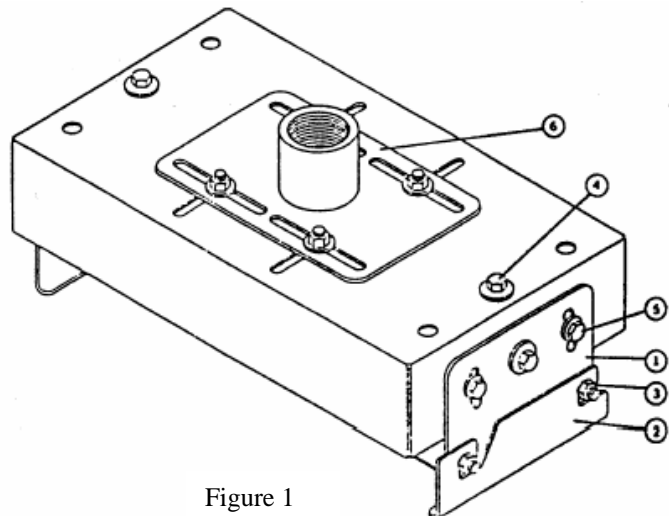


Figure 1

5. Tighten securely using the 5/16-18 flange nuts (3).

Align projector as follows:

WARNING!

MOUNTING HARDWARE IS TO BE LOOSENED ONLY TO ALLOW FOR NECESSARY MOVEMENT. OVER-LOOSENING OR REMOVAL OF MOUNTING HARDWARE MAY RESULT IN SERIOUS DAMAGE TO EQUIPMENT OR PERSONAL INJURY.

- Vertical Elevation (pitch):** Adjust by loosening the three bolts (5) located on the mounting plate (1). Loosen both sides, tilt projector to desired direction, and securely tighten three bolts.
- Horizontal Tilt (roll):** Adjust by loosening the three bolts (5) located on the mounting plate (1) and turning the adjustment bolt (4). Adjustment may be performed on both sides of the unit and securely tighten three bolts.
- Positive Registration Lock:** Tighten the pitch bolts loosen four flange nuts (3) securing the projector and remove the projector, with the HB-Hanging Bracket attached, from the VCM.
- Horizontal Adjustments:** Loosen, but do not remove, the nuts holding the top slide bracket (6). Adjust unit up to 1 ½" in any direction and tighten the nuts holding the top slide bracket.