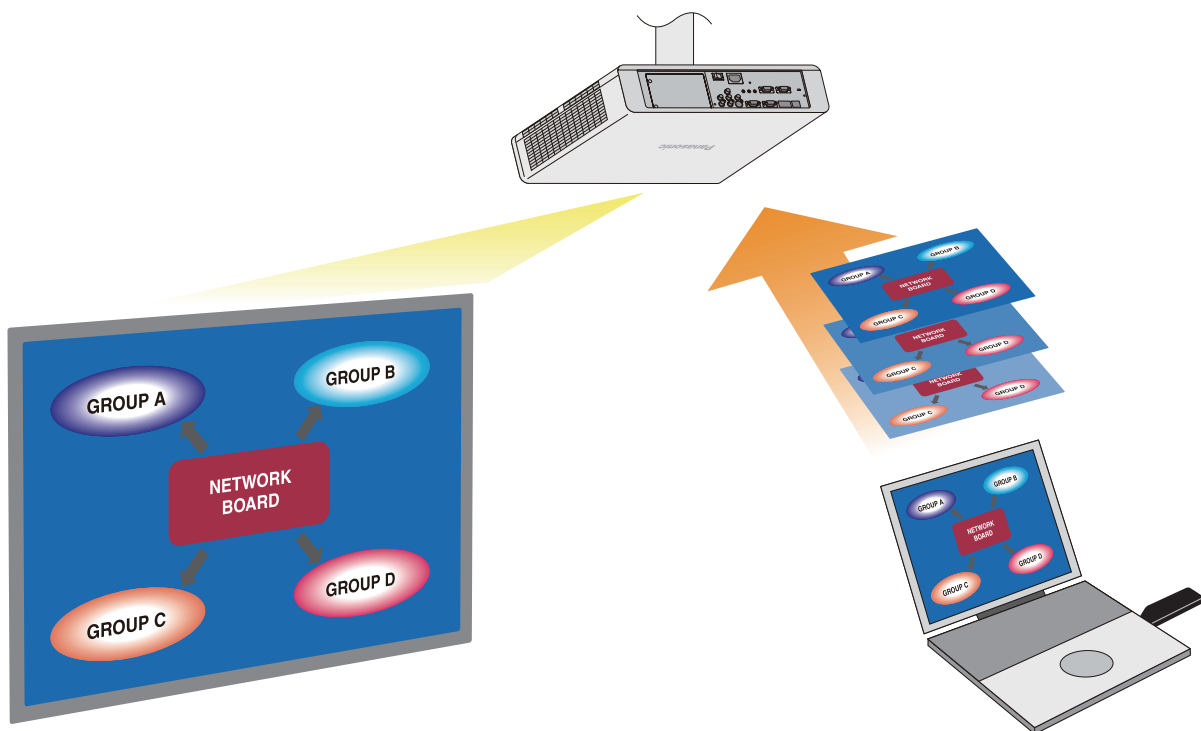


Mac



# Contents

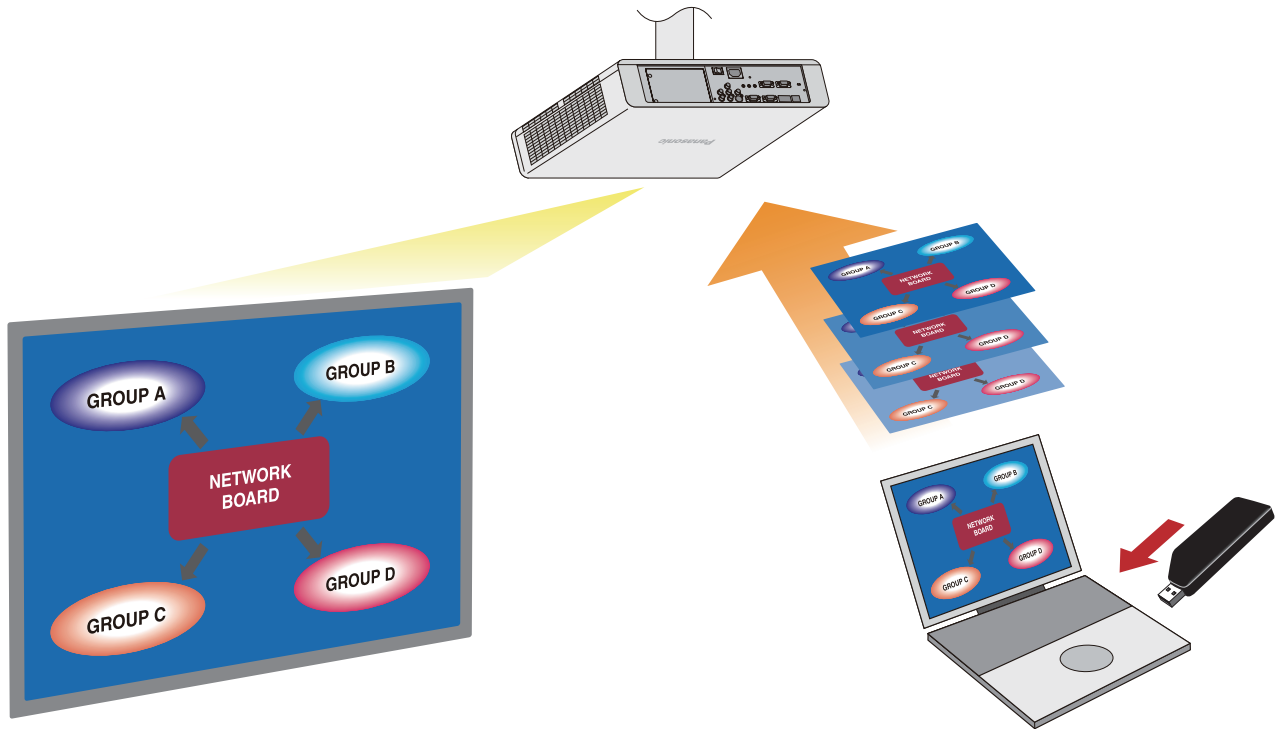
---

<b>Introduction</b>	<b>3</b>
What you can do with the Easy Wireless Stick	3
<b>Computer Environment Required for Connection</b>	<b>4</b>
<b>Supported Projector Models</b>	<b>4</b>
<b>Software Configuration</b>	<b>5</b>
<b>Explanation of Select Access Port Screen</b>	<b>5</b>
<b>Explanation of Launcher Screen</b>	<b>6</b>
<b>Connecting Computer and Projector</b>	<b>7</b>
■ Checking the projector	7
■ Connecting using the search list	9
■ Connecting using the registered projector tree	11
■ Connecting using automatic connection	13
<b>Projecting Computer Screen from Projector</b>	<b>14</b>
<b>Multi Live Mode</b>	<b>15</b>
■ Switching from one screen style to another	15
■ 16-screen index style	16
■ Setting the sender name	16
<b>Registering and Editing Tree Information</b>	<b>17</b>
■ Creating groups	17
■ Registering projectors	18
■ Changing the names of groups	19
■ Changing the registered information of projectors	20
■ Changing the registered groups of projectors	21
■ Deleting registered projectors and groups	22
<b>Copying the Tree to Another Easy Wireless Stick</b>	<b>23</b>
■ Exporting	23
■ Importing	24
<b>Troubleshooting</b>	<b>25</b>
<b>Trademarks</b>	<b>Back cover</b>

# Introduction

## What you can do with the Easy Wireless Stick

If you connect the Easy Wireless Stick to a computer, you can easily connect a projector and the computer and project the screen of the computer from the projector.



### Notes

- The screen images shown in this manual are examples of Mac OS X v10.7. The illustrations and screen images may differ from the actual items and screens.  
Furthermore, the specifications of the software of this product are subject to change without notice.
  - Do not connect this product to a computer on which WirelessManager is running. The functions may not work properly. Furthermore, do not start WirelessManager while this product is being used.
- \* “WirelessManager” is an abbreviation for the Panasonic’s separate software ‘Wireless Manager mobile edition’ for transferring images.

# Computer Environment Required for Connection

---

Check your computer.

The computer needs to meet the following requirements in order to use the software of this product.

## OS :

Mac OS X v10.6

Mac OS X v10.7

Mac OS X v10.8

Mac OS X v10.9

<b>Interface</b>	: USB 2.0
<b>CPU</b>	: A CPU with at least the minimum specifications to run the above OS.
<b>Memory</b>	: Memory with at least the minimum specifications to run the above OS.
<b>Color quality</b>	: 32 bit
<b>Screen resolution</b>	: Up to 2048 x 1536 dots

## Notes

- In Mac OS X 10.9, the projected image may stop or communication with the projector may be severed due to the “App Nap” function. In such cases, disable the App Nap function. For details on how to disable it, see “The projected image stops or communication with the projector is severed in Mac OS X 10.9” in the Troubleshooting section.
- Operation via a USB hub is not guaranteed.
- Note that operation is not guaranteed when the software is used with a system environment other than the above, on an OS that was not pre-installed or clean-installed.

Operation is not guaranteed for all computers that meet the above conditions.

# Supported Projector Models

---

Check your projector.

<b>DZ570 Series</b>	: PT-DZ570, PT-DW530, PT-DX500 (with ET-WM200 installed)
<b>FW430 Series</b>	: PT-FW430, PT-FX400 (with ET-WM200 installed)
<b>FW300NT Series</b>	: PT-FW300NT, PT-F300NT
<b>F200NT Series</b>	: PT-F200NT
<b>FW100NT Series</b>	: PT-FW100NT, PT-F100NT
<b>VW345N Series</b>	: PT-VW345N, PT-VX415N
<b>VW355N Series</b>	: PT-VW355N, PT-VX425N
<b>VX400NT Series</b>	: PT-VX400NT
<b>VW435N Series</b>	: PT-VW435N, PT-VX505N
<b>VZ575N Series</b>	: PT-VZ575N, PT-VW535N, PT-VX605N
<b>VZ585N Series</b>	: PT-VZ585N, PT-VW545N, PT-VX615N
<b>LB90NT Series</b>	: PT-LB90NT
<b>LW80NT Series</b>	: PT-LW80NT, PT-LB80NT, PT-LB75NT
<b>LB60NT Series</b>	: PT-LB60NT, PT-LB55NT, PT-LB50NT
<b>LB51NT Series</b>	: PT-LB51NT

Current as of June 2016

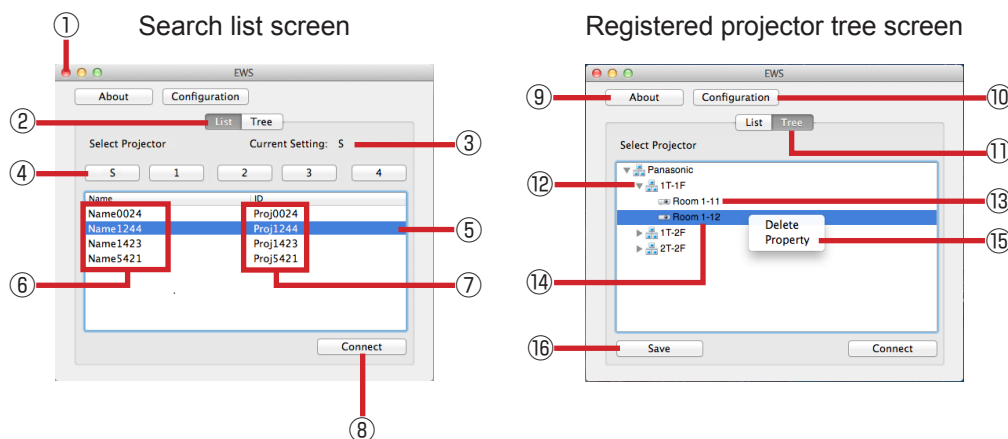
# Software Configuration

This software consists of the following executable files.

- EWS : Software for projecting the screen of a computer from a projector. (See page 9) and exporting and importing when transferring projector registration information (tree) to another Easy Wireless Stick (See page 23)

## Explanation of Select Access Port Screen

You can connect a computer and a projector via two types of Select Access Port screen: search list and registered projector tree. For the connection procedures, see “Connecting Computer and Projector” (page 7).

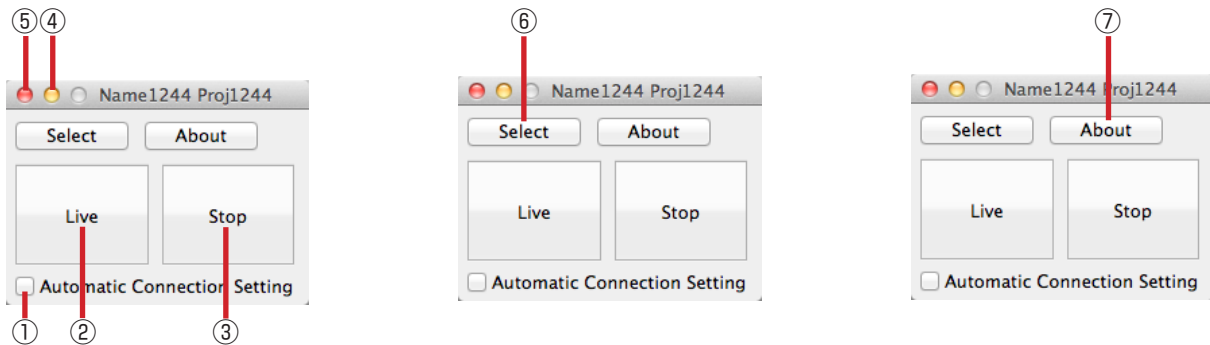


- ① Ends the software.
- ② Displays the search list screen.
- ③ Displays the currently selected wireless LAN connection setting.
- ④ Allows you to select from [S] and [1] to [4] as the appropriate wireless LAN connection setting for the projector. Select [S] if the wireless LAN connection of the projector is set to [SIMPLE], [S-DIRECT], or [S-MAP], and select the corresponding number if it is set to [1] to [4].
- ⑤ Displays the currently selected projector.
- ⑥ Displays the names of the projectors.
- ⑦ Displays the network IDs of the projectors.
- ⑧ Connects to the selected projector.
- ⑨ Displays the version information.
- ⑩ Displays the menu of the configuration.
- ⑪ Displays the registered projector tree screen.
- ⑫ Displays the registered groups.
- ⑬ Displays the names of registered projectors.
- ⑭ Displays the currently selected projector.
- ⑮ This menu is displayed when you select and then [Control]+click a group or projector.
- ⑯ Saves the current tree information.

- \* When multiple projectors are installed, you can assign the names of conference rooms or event sites to individual projectors, and manage projectors in groups such as buildings or floors. This management method is called “Tree”.
- \* When the projector’s wireless LAN connection setting is “SIMPLE”, “SIMPLE” will appear as the projector name.

# Explanation of Launcher Screen

When you specify a projector and connect in the Select Access Port screen, the launcher screen appears. For details on projecting the screen of your computer, see “Projecting Computer Screen from Projector” (page 14).



- ① Add a check to connect automatically (page 13).
- ② Starts or pauses projection.
- ③ Stops projection and clears the screen.
- ④ Minimizes the launcher to the dock.
- ⑤ Ends the software.
- ⑥ Displays the Select Access Port screen.
- ⑦ Displays the version information of the software.

## Notes

- The launcher is automatically minimized to the dock when projection starts.
- The [Live] button changes to the [Pause] button during projection.
- When the launcher is minimized to the dock, clicking the software in the dock redisplay the launcher screen.
- You can drag the title bar of the launcher to move the launcher to any position in the screen.
- [Select] is not available during projection.

# Connecting Computer and Projector

Verify the network ID and other information for the projector, and then perform connection of the projector.

## ■ Checking the projector

### 1. Powering up the projector

Turn on the power of the projector.

### 2. Setting the input

Press the <Panasonic APP> button / <NETWORK> button on the remote control (or press the <INPUT SELECT> button on the projector), and switch the input to [Panasonic APPLICATION] or [NETWORK].  
A standby screen is displayed in the image projected by the projector.

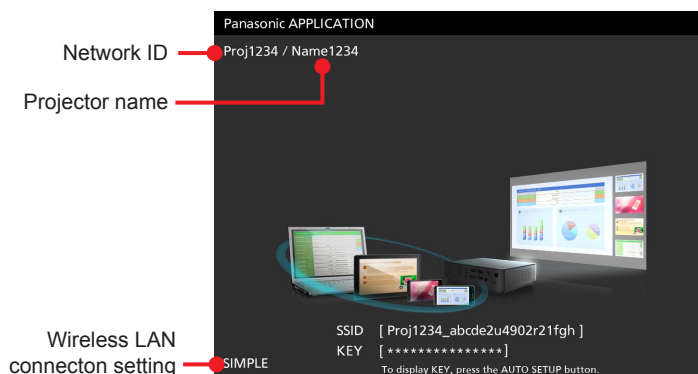
### 3. Checking the projector

Check the projector's wireless LAN connection setting, projector name, and network ID.  
The locations where this information is displayed may vary depending on the projector.

#### ● For projectors that display the standby screen (Projector image)

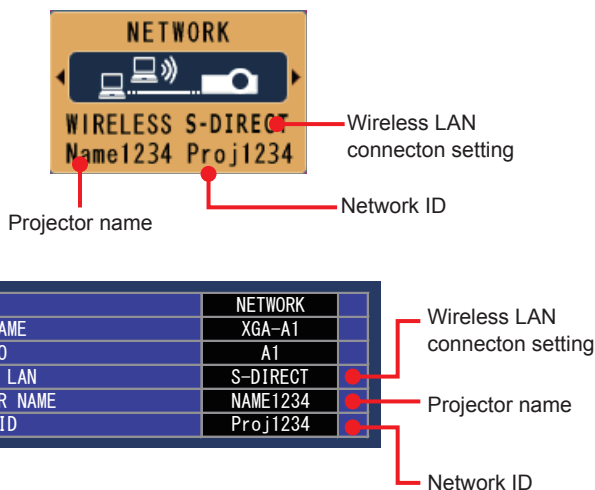
The standby screen may not appear even for projectors that display that screen if another user is already projecting an image or if the multi live mode (Page 15) is being used in the 4-screen or 16-screen index style. In such cases, you can check the network ID by pressing the AUTOSETUP button.

##### • Example of standby screen display.

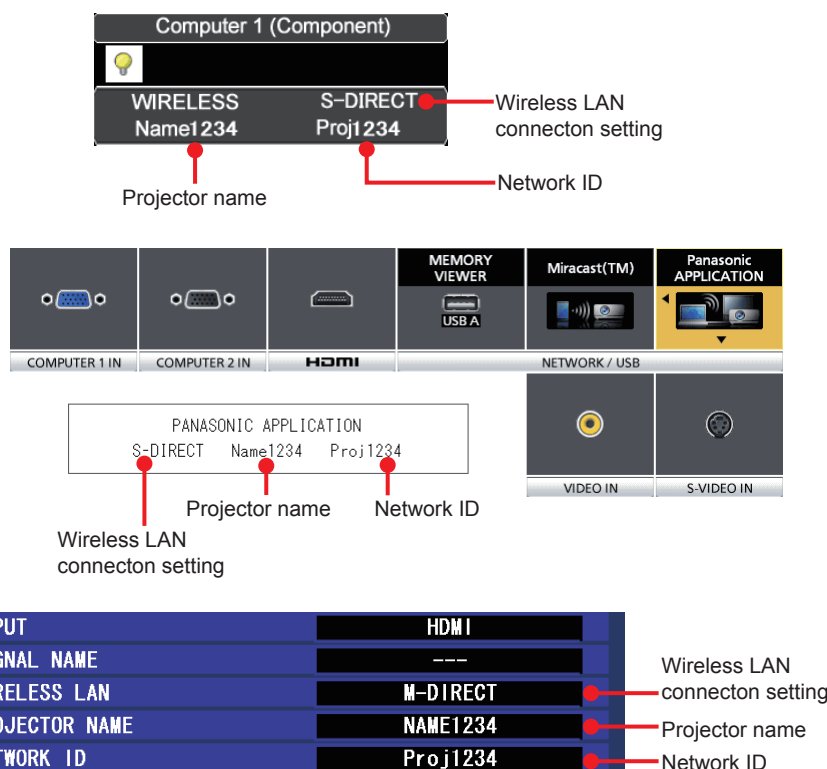


#### ● For projectors that do not display the standby screen (Projector image)

##### • Example of input guidance display.



## ■ Checking the projector (cont.)



- If the input guidance does not appear, press the <MENU> button of the projector, and on the menu that is now displayed, select [DISPLAY OPTION] → [INPUT GUIDE] → "ON" or "DETAILED".

### 4. Checking the network status

The network setting information can be checked using the projector's menu.

- Press the <MENU> button of the projector and, on the menu that is now displayed, select [NETWORK] → [NETWORK STATUS] to check the detailed network setting information.
- To easily connect to the computer with a wireless LAN, the [SIMPLE] or [S-DIRECT] setting is useful.

### Notes

- Depending on the projector used, the network setting method differs with wireless LAN networks.  
[\[Wireless LAN settings\] in the Operating Instructions for the projector](#)
- Depending on the model of your projector, the method for displaying the input guide and the appearance of the input guide may differ.
- If the input guide does not appear, set [INPUT GUIDE] to [ON] or [DETAILED] in the projector's [DISPLAY OPTION] menu.



## ■ Connecting using the search list

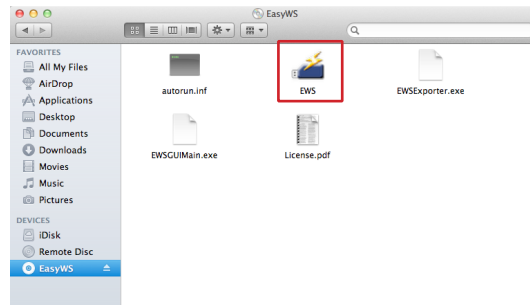
To search for a projector and then connect, use the following procedure.

### 1. Connect Easy Wireless Stick.

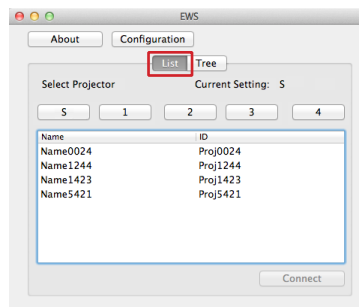
Connect the Easy Wireless Stick to a USB port of the computer.

### 2. Run [EWS].

Manually run the [EWS] file in the [EasyWS] CD drive displayed in the Finder.



### 3. Click [List] tab.



#### Note

- When the software starts, [S] is selected.

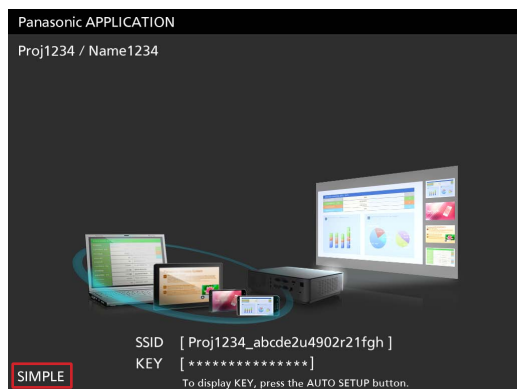
## ■ Connecting using the search list (cont.)

### 4. Search for the projector

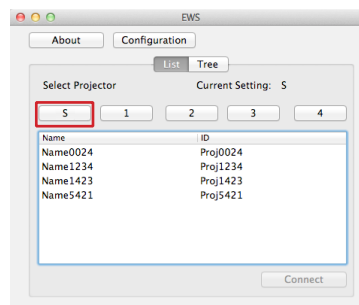
Click the button that corresponds to the wireless LAN connection setting displayed on the projector.

- \* If the wireless LAN connection setting is [SIMPLE], [S-DIRECT], or [S-MAP], click [S]. If the wireless LAN connection setting is [1], [2], [3], or [4], click the corresponding number.

Standby screen



Search List Screen



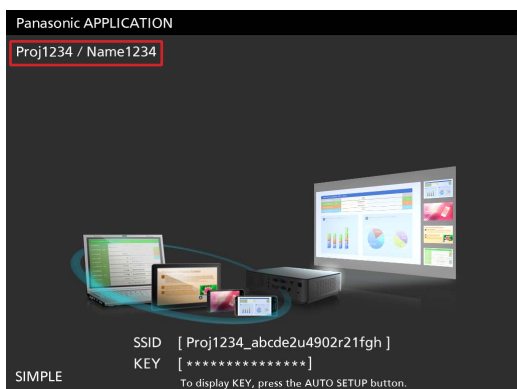
### Notes

- This software supports wireless LAN connection settings SIMPLE, S-DIRECT, S-MAP, and 1 to 4 for the projector. If the wireless LAN connection setting of the projector is set to any other setting, set it to SIMPLE, S-DIRECT, or S-MAP, or any setting from 1 to 4. For details on this setting, see the instruction manual for the projector.
- Search results are not updated automatically. To perform the search again, click the wireless LAN connection setting again.

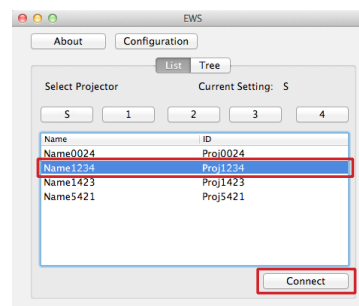
### 5. Connect to the projector.

Select the projector that corresponds to the projector name and network ID that appears in the projector's standby screen, and click the [Connect] button.

Standby screen



Search List Screen



### Notes

- The background color changes when a projector is selected. You can also connect by double-clicking the projector's name and network ID part in the search list screen.
- When the wireless network LAN connection setting is "SIMPLE", "SIMPLE Prpj\*\*\*\*" will appear in the search list screen.

### 6. Project the screen of the computer. (See page 14)

## ■ Connecting using the registered projector tree

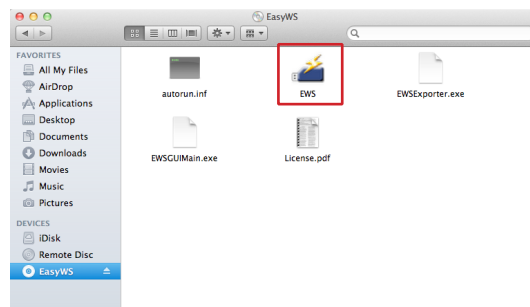
To connect using the registered projector tree, use the following procedure. Register the tree (group, projector) in Easy Wireless Stick beforehand. (See page 17)

### 1. Connect Easy Wireless Stick.

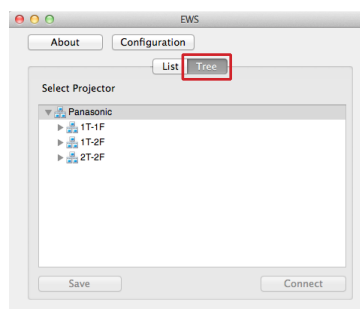
Connect the Easy Wireless Stick to a USB port of the computer.

### 2. Run [EWS].

Manually run the [EWS] file in the [EasyWS] CD drive of Finder.



### 3. Click [Tree] tab.

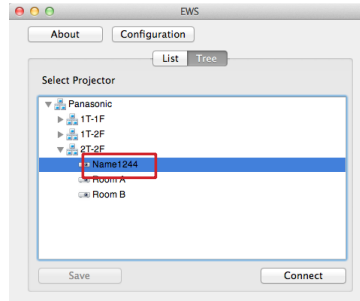


## ■ Connecting using the registered projector tree (cont.)

### 4. Connect to the projector.

Select a projector displayed in the registered projector tree, and click [Connect] button.

Example: If the name of the connection destination projector is “Name1244”, select the projector indicated as “Name1244”, and then click [Connect] button.



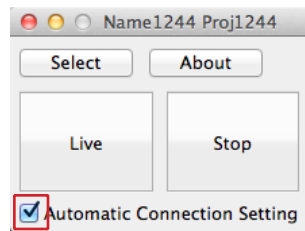
### Notes

- The background color changes when a projector is selected. You can also connect by double-clicking the icon for the projector in the registered projector tree screen.
- If the corresponding projector could not be found using the registered wireless LAN connection setting, use another wireless LAN connection setting to search for the corresponding projector.
- If the projector you want to connect to is not displayed below the group it belongs to, click [▶].

### 5. Project the screen of the computer. (See page 14)

## ■ Connecting using automatic connection

If you connect once, you can store the information for connecting to Easy Wireless Stick. Add a check to [Automatic Connection Setting] in the launcher to enable connecting to the projector and starting projection.

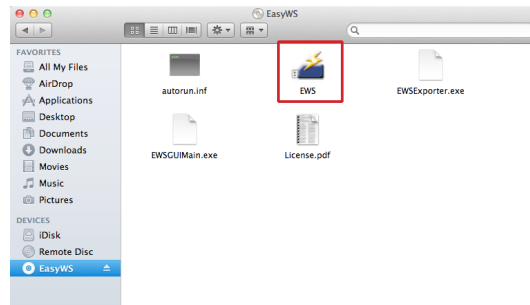


### 1. Connect Easy Wireless Stick.

Connect the Easy Wireless Stick to a USB port of the computer.

### 2. Run [EWS].

Manually run the [EWS] file in the [EasyWS] CD drive of Finder.



The software starts, and automatically establishes a connection to the projector for which the automatic connection setting is configured.



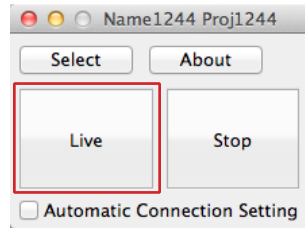
### Notes

- To cancel the automatic connection setting, clear the check from the check box.
- Connection may not be possible if the projector's wireless LAN connection setting is changed after selecting the [Automatic Connection Setting].  
If [Failed to connect.] is displayed, connect using the search list again. (See page 9)
- While the projector is connected and not performing projection (Live/Pause), you can set the automatic connection setting in the launcher screen.

# Projecting Computer Screen from Projector

---

When the connection is established, the launcher appears. If you click the [Live] button, the computer screen is projected from the projector. See “Explanation of Launcher Screen” (page 6).



## Notes

- The launcher is minimized to the dock after live mode starts.
- Audio is not sent to the projector, so audio is not output from the projector's internal speakers or audio device connected to the projector.
- Projection is not possible while the projector is in the standby state. Make sure to turn on the projector.
- The Easy Wireless Stick may cause delay when putting your computer into sleep mode. Before putting your computer into sleep mode, first disconnect the Easy Wireless Stick.
- If the Easy Wireless Stick is disconnected during image projection, the software is force ended and the computer screen will remain displayed on the projector's projection screen. If you do not want the screen to remain displayed, click the [Stop] button to stop projection and then disconnect the Easy Wireless Stick.



# Multi Live Mode

## ■ Switching from one screen style to another

Multi live mode has “4-screen multi style”, “4-screen index style” and “16-screen index style”.

### ■ How to operate

If you first press the [Stop] button on the launcher to stop projection and then select [MULTI-LIVE] from the [NETWORK] menu of the projector and press the <ENTER> button, you can change the style.

- 4-screen multi style

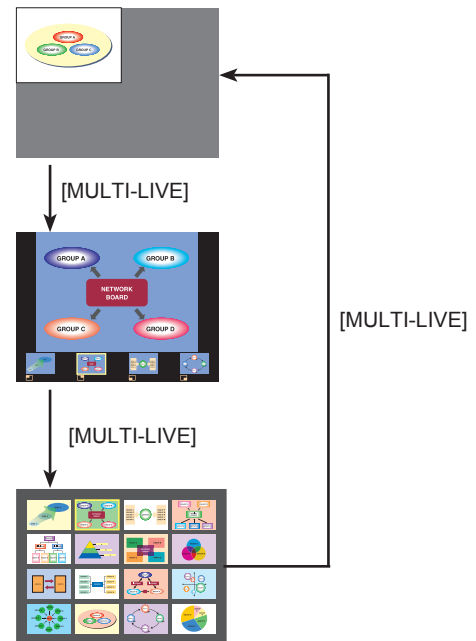
Assign an area of one quarter of the projector screen to each of up to four computers, and project images on the projector screen. This is the style to use for screen display using WirelessManager. It cannot be used with the Easy Wireless Stick.

- 4-screen index style

Display the indexes (small screens) of up to four computer screens, and make one of these screens an enlarged display. You can also temporarily switch over to a full screen display. This is the style to use for screen display using WirelessManager. It cannot be used with the Easy Wireless Stick.

- 16-screen index style (See page 16)

Display the indexes (small screens) of up to 16 computer screens. You can also temporarily switch over one of these screens to a full screen display.



### Notes

- When the projector starts up, it resumes in the current style the last time the projector was turned off.
- When switching from multi live mode to live of full screen display, first select the 4-screen multi style, and then click the [Live] button on the computer.
- If you switch over to a 4-screen multi style while computers are connected in a 16-screen index style, the connections to the computers will be nullified.
- You cannot use the [MULTI-LIVE] menu in full screen display or when not connected.

## ■ 16-screen index style

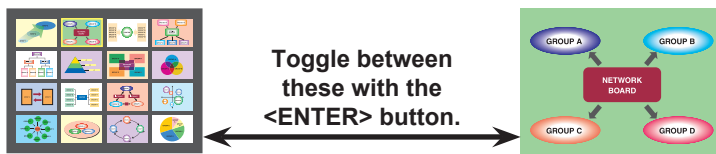
When the projector is set to “16-screen index style,” connect up to 16 computers to one projector, and simultaneously display the screens for the 16 computers.

1. Connect the projector and computer (See page 10) in the search list screen or registered tree screen and open the launcher screen (See page 14).
2. Select [MULTI-LIVE] from the [NETWORK] menu of the projector, press the <ENTER> button, and set the projection screen to “16-screen index style”. (See page 15)
3. Click [Live] button on the launcher.

The computer images are projected on the empty small screens on the 16-screen display.  
The projector determines the display position.

### ■ Enlarged display

- Use the << >> <▲ <▼> buttons on the remote control to select (move the yellow box to) the image to be enlarged and press <ENTER> to expand that image to fill the display.
- Press <ENTER> again to return to the 16-screen index style.



### Note

- If a connection error occurs during projection, the message [“Live Mode” is deactivated] will appear. Check the communication environment, then click the [Live] button again on the launcher.

### ■ Quitting 16-screen index style

Click the [Stop] button on the launcher to quit projection, select [MULTI-LIVE] from the projector [NETWORK] menu, press the <ENTER> button and set the 4-screen multi style.

## ■ Setting the sender name

Clicking the [Configuration] button in the Select Access Port screen displays the [User Setting] screen.

- You can configure text up to eight alphanumeric characters long.
- The configured text appears at the bottom of each small screen of the 16-screen index style.

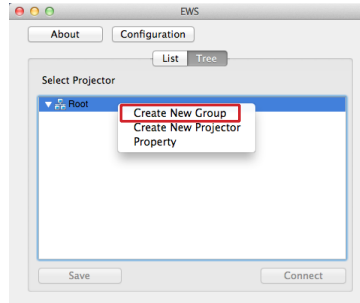


# Registering and Editing Tree Information

## ■ Creating groups

### 1. Display the edit menu.

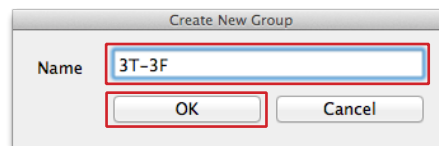
Select the [Tree] tab , and [Control]+click [Root] to display the menu. Select [Create New Group].



### 2. Enter the name of the group.

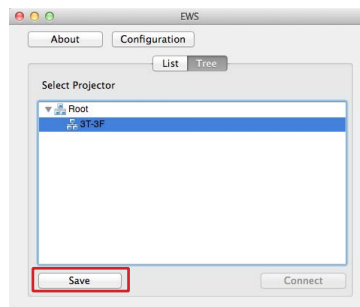
Enter the name of the group, and then click [OK] button.

Example: Assign the name [3T-3F] to the group for managing projectors.



### 3. Save the registration information.

Click the [Save] button to save the entered group name to the Easy Wireless Stick. The changed information will not be stored if [Save] button is not clicked.



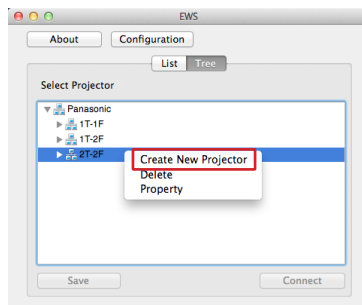
## Notes

- Registered groups and projectors are displayed in ascending order. The order cannot be changed.
- A group can only be created one level below [Root].
- You can configure text up to 64 alphanumeric characters long.

## ■ Registering projectors

### 1. Display the edit menu.

Select the group of the projector registration destination, and then [Control]+click to display the menu. Select [Create New Projector].

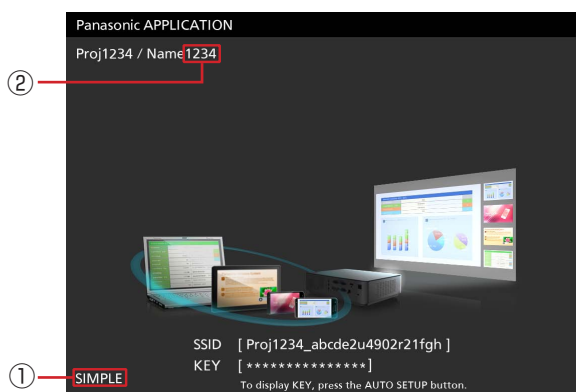


### 2. Enter the information of the projector.

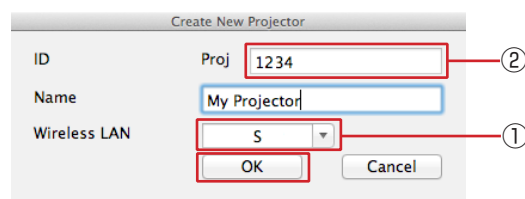
Enter the wireless LAN connection setting in ① of the projector registration screen, and enter the network ID in ②. For details on how to verify the wireless LAN connection setting and network ID of the projector, see “Checking the projector” (page 7).

If the wireless LAN connection setting of the projector is set to [SIMPLE], [S-DIRECT], or [S-MAP], select [S] for ① in the projector registration screen.

Standby screen



Projector Registration Screen

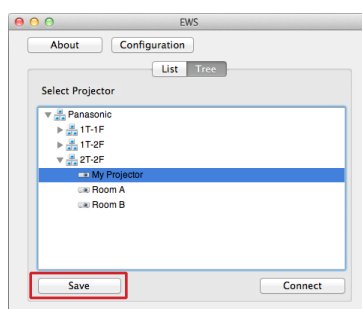


\* The projector search is performed using the wireless LAN connection setting and network ID. The registered name is used for item display in the tree, so enter a name that will be easy to manage.

### 3. Click [OK] button.

### 4. Save the registration information.

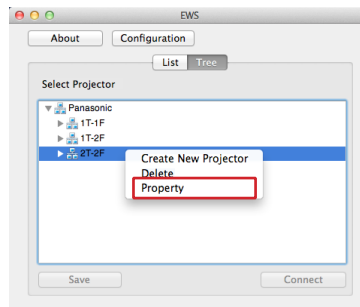
Click the [Save] button to save the entered projector information to the Easy Wireless Stick. When storing the changed information, be sure to click [Save] button.



## ■ Changing the names of groups

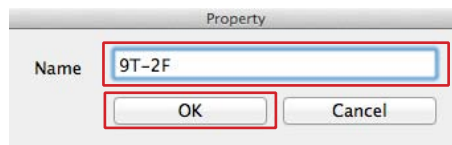
### 1. Display the edit menu.

Select the group for which you want to change the name, and [Control]+click to display the menu. Select [Property].



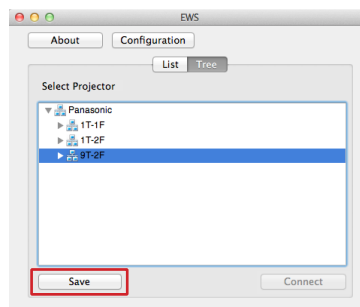
### 2. Enter a new name.

Enter a new name, and then click [OK] button.



### 3. Save the changed information.

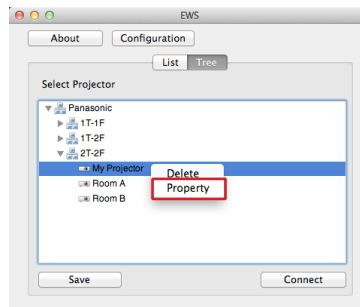
Click the [Save] button to save the changed group name to the Easy Wireless Stick. When storing the changed information, be sure to click [Save] button.



## ■ Changing the registered information of projectors

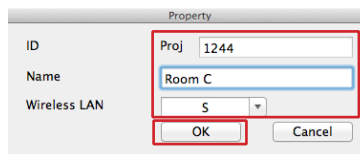
### 1. Display the edit menu.

Select the icon of the projector you want to change, and [Control]+click to display the menu. Select and click [Property].



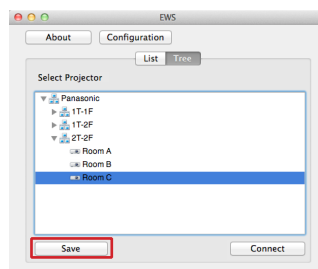
### 2. Enter a new information.

Enter the changes, and then click [OK] button.



### 3. Save the registration information.

Click the [Save] button to save the changed information to the Easy Wireless Stick. When storing the changed information, be sure to click [Save] button.

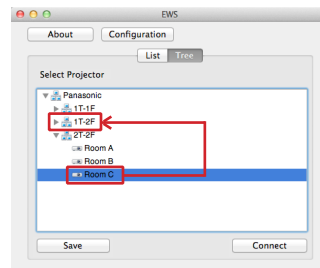


## ■ Changing the registered groups of projectors

You can change the group of a registered projector by dragging and dropping.

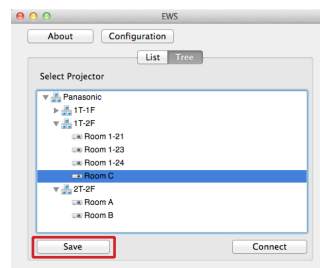
### 1. Move a registered projector.

Drag the icon of the projector you want to move, and drop it as is on the move destination group.



### 2. Save the changed information.

Click the [Save] button to save the changed information to the Easy Wireless Stick. When storing the changed information, be sure to click [Save] button.



#### Note

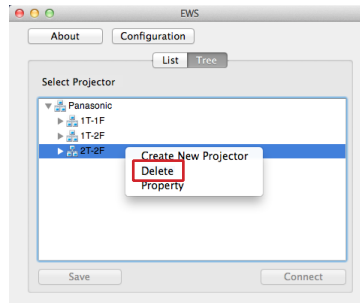
- Registered groups and projectors are displayed in the ascending order of group names and projector names. The order cannot be changed.

## ■ Deleting registered projectors and groups

### 1. Display the edit menu.

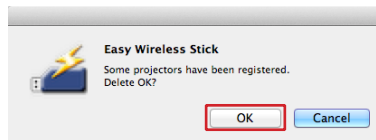
Select the projector or group you want to delete, and [Control]+click to display the menu. Select and click [Delete].

Example: Delete the group [2T-2F].



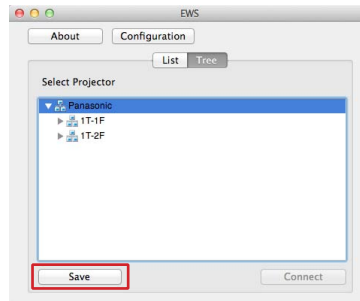
### 2. When the delete confirmation message appears, click [OK] button.

When you delete a group, all of the projectors registered to that group are deleted.



### 3. Save the changed information.

Click the [Save] button to save the changed information to the Easy Wireless Stick. When storing the changed information, be sure to click [Save] button.



# Copying the Tree to Another Easy Wireless Stick

You can copy already registered tree information to another Easy Wireless Stick.

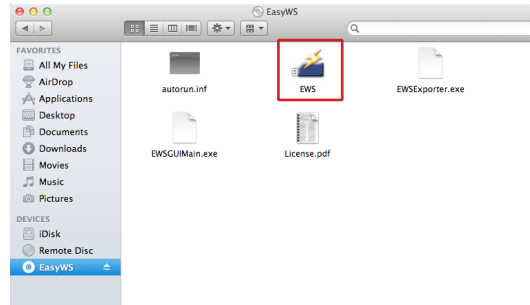
## ■ Exporting

### 1. Connect Easy Wireless Stick.

Connect Easy Wireless Stick to a USB port of the computer.

### 2. Run [EWS].

Manually run the [EWS] file in the [EasyWS] CD drive of Finder.



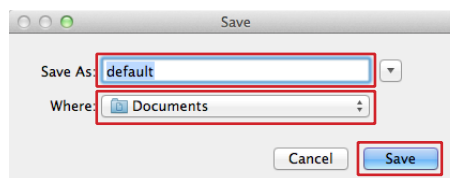
### 3. Click [Save].

Click [File] on the menu bar, and click [Save] on the pull-down menu.



### 4. Save the information to the computer.

Select the location to save the tree information, enter a file name, and click [Save] button.



### 5. Close the application, and disconnect the Easy Wireless Stick that is the copy source from the computer.

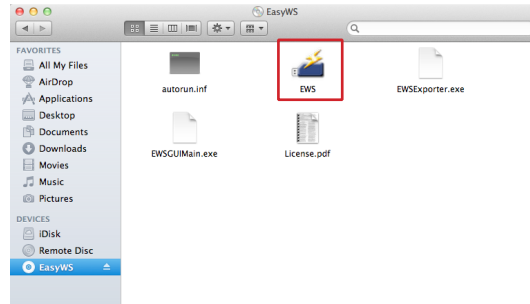
## ■ Importing

### 1. Connect Easy Wireless Stick.

Connect Easy Wireless Stick to a USB port of the computer.

### 2. Run [EWS].

Manually run the [EWS] file in the [EasyWS] CD drive of Finder.



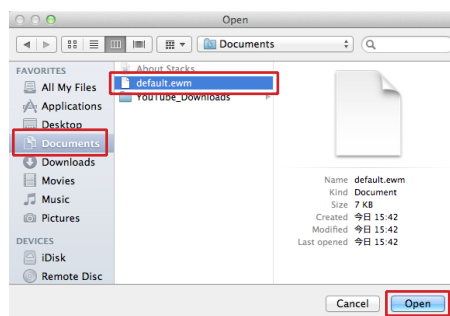
### 3. Click [Open].

Click [File] on the menu bar, and click [Open] on the pull-down menu.



### 4. Open the file.

Select the file saved during the export, and click [Open] button.



### 5. Close the application, and disconnect the Easy Wireless Stick that is the copy source from the computer.

#### Note

- When the information is imported, the tree information registered to the Easy Wireless Stick that is the copy destination is overwritten by the tree information of the copy source.



# Troubleshooting

---

## ■ Image display and animation playback are slow and not smooth.

## ■ There is a time lag between computer operation and the images actually projected.

- This software imports and compresses the computer screen before sending it to the projector. Furthermore, the received data is uncompressed on the projector side before being projected. This processing causes a delay.
- When video is played, display may become slow.
- If another application is running at the same time, display may become slow.
- Wireless communication in the vicinity may have an adverse effect.

## ■ The wireless LAN connection setting, projector name, and network ID do not appear in the projector's input guide.

## ■ Projectors cannot be searched.

- Depending on the settings on a VW345N series projector, the wireless LAN connection setting, projector name, and network ID may not be displayed or may not be found. In such cases, perform the following.
  - If [CONNECTION LOCK] is set to [OFF] in the [NETWORK] menu: Press the <Panasonic APP> button on the remote control, and switch the input to [Panasonic APPLICATION].
  - If [CONNECTION LOCK] is set to [MEMORY VIEWER] or [Miracast (TM)] in the [NETWORK] menu: Set [CONNECTION LOCK] to [Panasonic APPLICATION].

## ■ The projected image stops or communication with the projector is severed in Mac OS X 10.9.

- When the EWS window becomes inactive (i.e., the window is minimized or hidden behind another window) in Mac OS X 10.9, the projected image may stop or communication with the projector may be severed due to the "App Nap" function of the OS. In such cases, perform the following to disable the App Nap setting of this software, and disable the App Nap function on the OS.

<Disabling the App Nap setting>

### 1. Quit the EWS software.

### 2. Display the information about this software.

Select [Finder] - [<user name>] - [EWS], and select [Get Info] from the right-click menu.

### 3. Disable the App Nap setting.

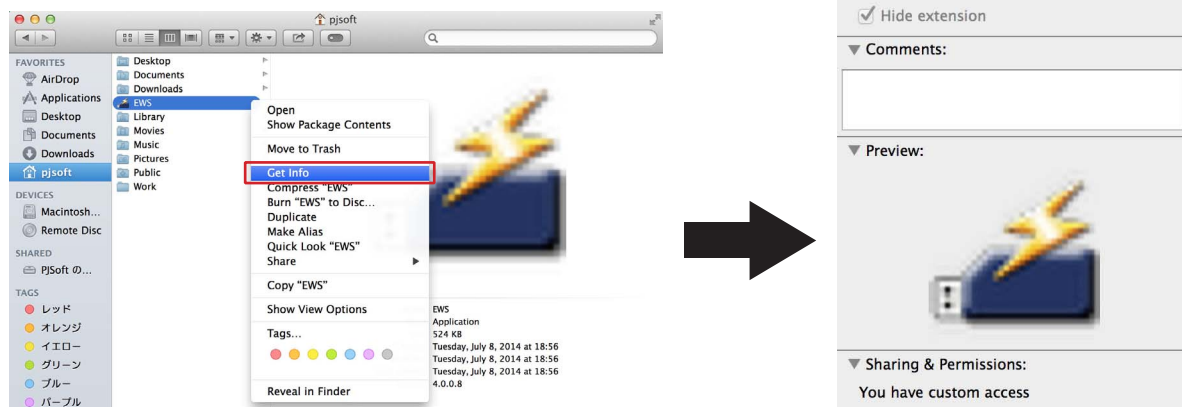
Place a check mark next to [Prevent App Nap] in the information screen.

### 4. Close the information screen.

# Troubleshooting (cont.)

## 5. Start EWS.

Manually execute the EWS file in the [EasyWS] CD drive displayed on the Finder.



## ■ Projected video stops midway through when playing back video at full screen in Mac OS X 10.9.

- If you start projecting while playing back a video at full screen in Mac OS X 10.9, the projected video may stop midway through. In such cases, change the display size of the playback video.

Example: Changing the setting in QuickTime Player

If you are using QuickTime Player as your media player, select [View] → [Fit to Screen] in the menu bar.

### Note

- In addition to the information presented here, refer also to the FAQ (frequently asked questions) section in our website (<https://panasonic.net/cns/projector/>).

# Troubleshooting (cont.)

## Message List

The following table shows the messages for the software and the corresponding countermeasures.

Software	Message	Countermeasure
EWS	The application cannot be started.	There may be insufficient resources on the computer currently being used. End other software and then reconnect the Easy Wireless Stick.
	You cannot use this version of the application EWS with this version of Mac OS X.	The OS of the computer currently being used is not supported. Use a computer with a supported OS installed. (See page 4)
	No Easy Wireless Sticks were found.	Easy Wireless Stick is connected properly.
	Failed to connect.	Check whether the power of the projector to be connected is turned on. Then, try connecting the projector again. If connecting using the search list, perform the search in the Select Access Port screen again, and then try connecting again. If connecting using the registered projector tree, try connecting again as normal.  In rare cases static electricity or noise may make it impossible to establish a wireless connection to the projector. If this happens, press the power button on the remote control or on the projector to power off the projector temporarily. After the cooling fan stops operating (after the power monitor on the projector changes from orange to red), power on the projector and reconnect to the projector.
	Incorrect password.	Enter the correct password.
	Remote is being controlled.	The projector is currently under external control by using the REMOTE IN terminal. Switch the input to the network by using the panel for an external control.
	Failed to start "Live Mode".	Input selection for the projector may have failed. Switch the input to the network, and then click the [Live] button again.
	The projector is in STANDBY. Turn on the projector power.	Turn on the power of the projector you want to connect to, perform the search in the Select Access Port screen again, and then try connecting again.
	Easy Wireless Stick is busy.	The Easy Wireless Stick is in a busy state. Wait a while and then try again.
	Invalid entry.	Enter the 4-digit number for the projector ID.
	Another user is occupying destination projector.	Check the following possible causes. <ul style="list-style-type: none"><li>• Check whether live mode has already been started by another user.</li><li>• Check whether the projector style is set to 4-screen index style. If it is, change the style other than 4-screen index style using the [NETWORK] menu of the projector.</li><li>• If the Easy Wireless Stick is disconnected during live mode, the next live mode cannot be started for up to approximately 30 seconds. Wait a while and then click the [Live] button again.</li></ul>

# Troubleshooting (cont.)

---

## Message List (cont.)

Software	Message	Countermeasure
EWS	"Live Mode" is deactivated.	<p>Check the following possible causes.</p> <ul style="list-style-type: none"><li>• Check whether live mode has been interrupted by another user.</li><li>• Check whether the power of the projector is off. If the power is off, turn on the power, perform the search in the Select Access Port screen again, and then try connecting again.</li><li>• Check whether there are other wireless LAN devices in the vicinity. If there are, turn off any wireless LAN device that is not needed before use.</li></ul>

# Trademarks

---

- Mac, Mac OS, OS X, App Nap, and QuickTime are registered trademarks of Apple, Inc. in the USA and other countries.
- Other company names, product names or other names noted in this manual are trademarks or registered trademarks of the respective companies. Note that ® and TM marks are not indicated in the text of this manual.

## Notes

- Unauthorized use or reproduction of part or all of this software and manuals is strictly prohibited.
- Panasonic cannot be held liable for any effects resulting from the use of this software and its manuals.
- Panasonic reserves the right to revise software specifications and manual content without notice.

---

# Panasonic Corporation

Web Site : <https://panasonic.net/cns/projector/>

© Panasonic Corporation 2012

W0412AM3067 -PS