

Attachment for ceiling mount bracket

**Description**

This attachment is required when using an existing ceiling mount bracket for a Panasonic's applicable projector.

**NOTE:** This ceiling mount bracket cannot be used by itself. Combine it with the optional ceiling mount bracket.

<b>Specifications</b>	Dimensions (W × H × D):	384 × 56 × 447 mm (15-1/8 × 2-7/32 × 17-19/32 inches)
	Weight:	Approximately 2.9 g (6.4 lbs)
	Applicable ceiling mount brackets:	ET-PKD100H/PKD100S/PKD77H/PKD75S/PKD56H/ PKD55S

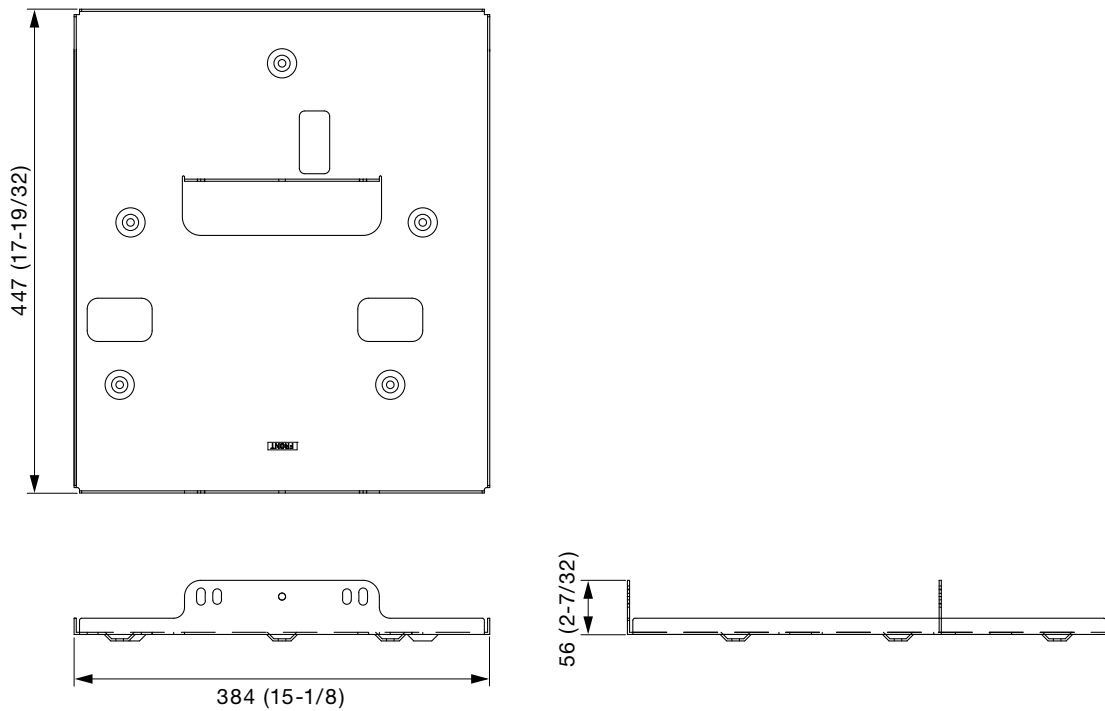
\* Average value. May differ depending on the actual unit.

<b>Parts</b>	Attachment for ceiling mount bracket . . . . .	1	Drop prevention kits . . . . .	2
	Washer-fitted hexagonal bolt (M6 × 16) . . . . .	5		

**Caution:**

- Mounting should be done by a qualified technician.
- Make sure that the mounting (ceiling) area has sufficient strength.
- Read the enclosed mounting instructions thoroughly before starting.
- Do not use an electric screwdriver or impact driver to tighten screws. Use a torque driver or hexagon torque wrench and tighten screws to the torque specified in the instructions.
- When the product is no longer going to be used, have it disposed of quickly by a professional disposal service.

**Dimensions**



unit : mm (inch)  
**NOTE:** This illustration is not drawn to scale.

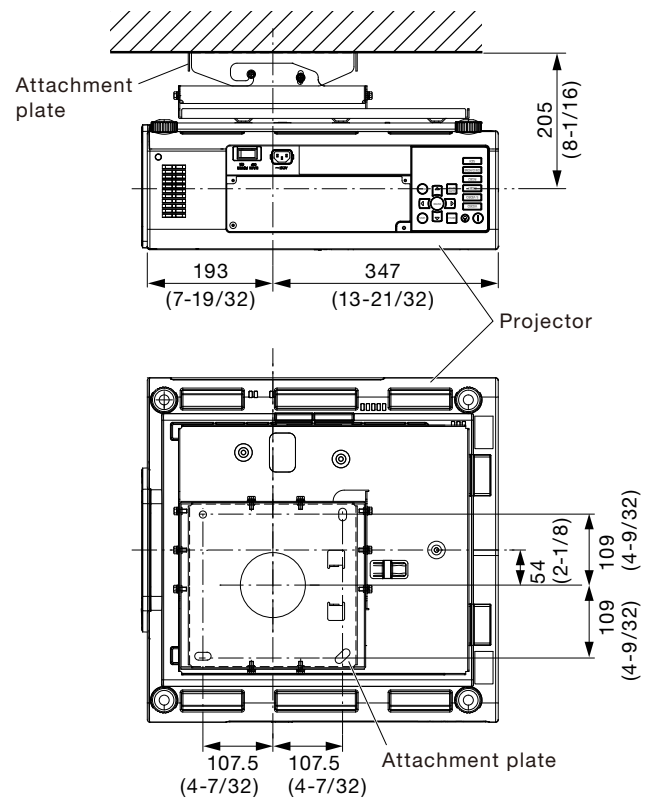
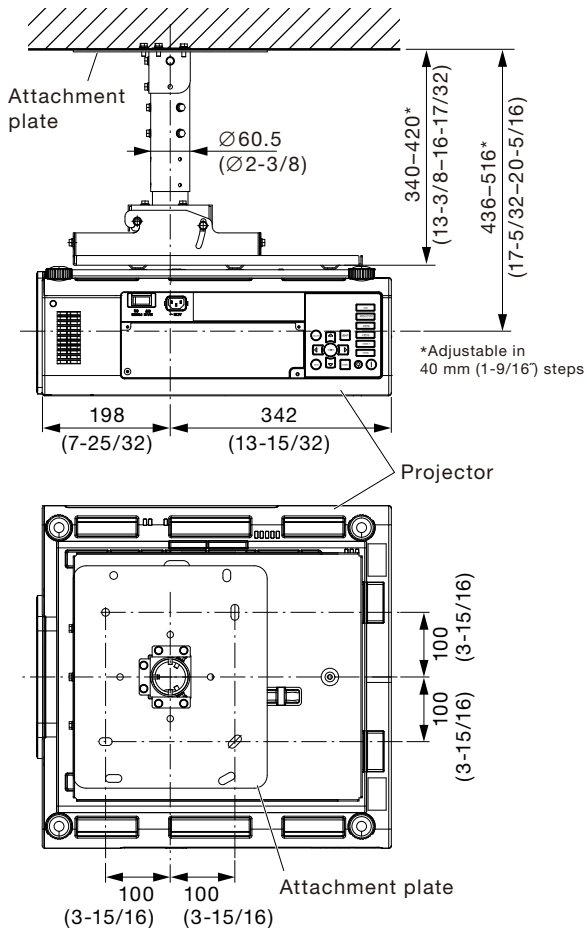
Weights and dimensions shown are approximate. Specifications subject to change without notice.

Attachment for ceiling mount bracket

Dimensions

Illustration shows the ET-PAD310 and ET-PKD100H/  
PKD77H/PKD56H attached to the projector.

Illustration shows the ET-PAD310 and ET-PKD100S/  
PKD75S/PKD55S attached to the projector.



unit : mm (inch)  
NOTE: This illustration is not drawn to scale.

Weights and dimensions shown are approximate. Specifications subject to change without notice.