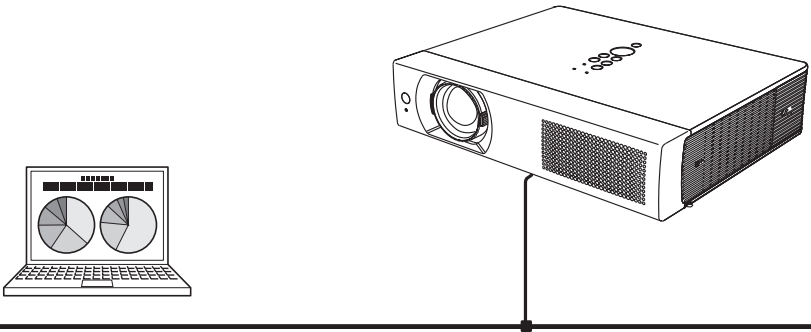


Owner's Manual

Network Set-up and Operation For Macintosh

Wired and Wireless Setting
Projector Set-up and Operation
Network Capture



This is the manual for the Network function.
Read this manual thoroughly to operate the Network function.
First, read the owner's manual of the projector to understand the basic operation of the projector and the safety instructions.
The safety instructions in the owner's manuals should be followed strictly.

Compliance

This projector provides the wireless LAN module which complies with the module certification.

Federal Communications Commission Notice

This equipment has been tested and found to comply with the limits for a Class B digital device, pursuant to part 15 of the FCC Rules. These limits are designed to provide reasonable protection against harmful interference in a residential installation. This equipment generates, uses and can radiate radio frequency energy and, if not installed and used in accordance with the instructions, may cause harmful interference to radio communications. However, there is no guarantee that interference will not occur in a particular installation. If this equipment does cause harmful interference to radio or television reception, which can be determined by turning the equipment off and on, the user is encouraged to try to correct the interference by one or more of the following measures:

- Reorient or relocate the receiving antenna.
- Increase the separation between the equipment and receiver.
- Connect the equipment into an outlet on a circuit different from that to which the receiver is connected.
- Consult the dealer or an experienced radio/TV technician for help.

Model Number	: 1AV4U19B25500
Trade Name	: Sanyo
Responsible party	: SANYO NORTH AMERICA CORPORATION
Address	: 21605 Plummer Street, Chatsworth, California 91311
Telephone No.	: (818)998-7322

This device complies with Part 15 of FCC Rules and RSS-Gen of IC Rules. Operation is subject to the following two conditions: (1) the device may not cause interference, and (2) the device must accept any interference, including interference that may cause undesired operation of this device.

CAUTION: Properly shielded a grounded cables and connectors must be used for connection to host computer and /or peripherals in order to meet FCC emission limits.

VGA cable with ferrite core must be used for RF interference suppression.

For Canadian Users

This Class B digital apparatus complies with Canadian ICES-003.

Cet appareil numérique de la classe B est conforme à la norme NMB-003 du Canada.

FCC Warning

Changes or modifications not expressly approved by the party responsible for compliance could void the user's authority to operate the equipment.

FCC RF Exposure Warning

- This transmitter must not be co-located or operated in conjunction with any other antenna or transmitter.
- This equipment complies with FCC/IC radiation exposure limits set forth for uncontrolled equipment and meets the FCC radio frequency (RF) Exposure Guidelines in Supplement C to OET65 and RSS-102 of IC radio frequency (RF) Exposure rules. This equipment should be installed and operated with at least 20cm and more between the radiator and person's body (excluding extremities: hands, wrists, feet and ankles).



The CE Mark is a Directive conformity mark of the European Community (EC).



The Alert Mark is a Directive conformity mark of the European Community.

English	Hereby, SANYO Sales & Marketing Europe GmbH, declares that this WLAN Module (1AV4U19B25500) is in compliance with the essential requirements and other relevant provisions of Directive 1999/5/EC.
Česky [Czech]	SANYO Sales & Marketing Europe GmbH tímto prohlašuje, že tento WLAN Module (1AV4U19B25500) je ve shodě se základními požadavky a dalšími příslušnými ustanoveními směrnice 1999/5/ES.
Dansk [Danish]	Undertegnede SANYO Sales & Marketing Europe GmbH erklærer herved, at følgende udstyr WLAN Module (1AV4U19B25500) overholder de væsentlige krav og øvrige relevante krav i direktiv 1999/5/EF.
Deutsch [German]	Hiermit erklärt SANYO Sales & Marketing Europe GmbH, dass sich das Gerät WLAN Module (1AV4U19B25500) in Übereinstimmung mit den grundlegenden Anforderungen und den übrigen einschlägigen Bestimmungen der Richtlinie 1999/5/EG befindet.
Eesti [Estonian]	Käesolevaga kinnitab SANYO Sales & Marketing Europe GmbH seadme WLAN Module (1AV4U19B25500) vastavust direktiivi 1999/5/EÜ põhinõuetele ja nimetatud direktiivist tulenevatele teistele asjakohastele sätetele.
Español [Spanish]	Por medio de la presente SANYO Sales & Marketing Europe GmbH declara que el WLAN Module (1AV4U19B25500) cumple con los requisitos esenciales y cualesquiera otras disposiciones aplicables o exigibles de la Directiva 1999/5/CE.
Ελληνική [Greek]	ΜΕ ΤΗΝ ΠΑΡΟΥΣΑ SANYO Sales & Marketing Europe GmbH ΔΗΛΩΝΕΙ ΟΤΙ WLAN Module (1AV4U19B25500) ΣΥΜΜΟΡΦΟΝΕΤΑΙ ΠΡΟΣ ΤΙΣ ΟΥΣΙΩΔΕΙΣ ΑΠΑΙΤΗΣΕΙΣ ΚΑΙ ΤΙΣ ΛΟΙΠΕΣ ΣΧΕΤΙΚΕΣ ΔΙΑΤΑΞΕΙΣ ΤΗΣ ΟΔΗΓΙΑΣ 1999/5/EK.
Français [French]	Par la présente SANYO Sales & Marketing Europe GmbH déclare que l'appareil WLAN Module (1AV4U19B25500) est conforme aux exigences essentielles et aux autres dispositions pertinentes de la directive 1999/5/CE.
Italiano [Italian]	Con la presente SANYO Sales & Marketing Europe GmbH dichiara che questo WLAN Module (1AV4U19B25500) è conforme ai requisiti essenziali ed alle altre disposizioni pertinenti stabilite dalla direttiva 1999/5/CE.
Latviski [Latvian]	Ar šo SANYO Sales & Marketing Europe GmbH, deklarē, ka WLAN Module (1AV4U19B25500) atbilst Direktīvas 1999/5/EK būtiskajām prasībām un citiem ar to saistītajiem noteikumiem.
Lietuvių [Lithuanian]	Šiuo SANYO Sales & Marketing Europe GmbH deklaruojama, kad šis WLAN Module (1AV4U19B25500) atitinka esminius reikalavimus ir kitas 1999/5/EB Direktyvos nuostatas.
Nederlands [Dutch]	Hierbij verklaart SANYO Sales & Marketing Europe GmbH dat het toestel WLAN Module (1AV4U19B25500) in overeenstemming is met de essentiële eisen en de andere relevante bepalingen van richtlijn 1999/5/EG.
Malti [Maltese]	Hawnhekk, SANYO Sales & Marketing Europe GmbH, jiddikjara li dan WLAN Module (1AV4U19B25500) jikkonforma mal-htigijiet essenzjali u ma provvedimenti oħrajn rilevanti li hemm fid-Dirrettiva 1999/5/EC.
Magyar [Hungarian]	Alulírott, SANYO Sales & Marketing Europe GmbH nyilatkozom, hogy a WLAN Module (1AV4U19B25500) megfelel a vonatkozó alapvető követelményeknek és az 1999/5/EC irányelv egyéb előírásainak.
Polski [Polish]	Niniejszym SANYO Sales & Marketing Europe GmbH oświadczam, że WLAN Module (1AV4U19B25500) jest zgodny z zasadniczymi wymogami oraz pozostałymi stosownymi postanowieniami Dyrektywy 1999/5/EC.
Português [Portuguese]	SANYO Sales & Marketing Europe GmbH declara que este (1AV4U19B25500) está conforme com os requisitos essenciais e outras disposições da Directiva 1999/5/CE.
Slovensko [Slovenian]	SANYO Sales & Marketing Europe GmbH izjavlja, da je ta (1AV4U19B25500) v skladu z bistvenimi zahtevami in ostalimi relevantnimi določili direktive 1999/5/ES.
Slovensky [Slovak]	SANYO Sales & Marketing Europe GmbH týmto vyhlasuje, že (1AV4U19B25500) spĺňa základné požiadavky a všetky príslušné ustanovenia Smernice 1999/5/ES.
Suomi [Finnish]	SANYO Sales & Marketing Europe GmbH vakuuttaa täten että (1AV4U19B25500) tyyppinen laite on direktiivin 1999/5/EY oleellisten vaatimusten ja sitä koskevien direktiivin muiden ehtojen mukainen.
Svenska [Swedish]	Härmed intygar SANYO Sales & Marketing Europe GmbH att denna (1AV4U19B25500) står i överensstämmelse med de väsentliga egenskapskrav och övriga relevanta bestämmelser som framgår av direktiv 1999/5/EG.
Íslenska [Icelandic]	Hér með lýsir SANYO Sales & Marketing Europe GmbH yfir því að (1AV4U19B25500) er í samræmi við grunnkröfur og aðrar kröfur, sem gerðar eru í tilskipun 1999/5/EC.
Norsk [Norwegian]	SANYO Sales & Marketing Europe GmbH erklærer herved at utstyret (1AV4U19B25500) er i samsvar med de grunnleggende krav og øvrige relevante krav i direktiv 1999/5/EF.

Safety instructions



CAUTION IN USING THE PROJECTOR VIA NETWORKS

- When you find a problem with the projector, remove the power cable immediately and inspect the unit. Using the projector with failure may cause fire or other accidents.
- If you remotely use the projector via networks, carry out a safety check regularly and take particular care to its environment. Incorrect installation may cause fire or other accidents.



CAUTION IN USING NETWORK FUNCTION

- SANYO Electric Co., Ltd. assumes no responsibility for the loss or damage of data, or damage of the computer caused by using this projector. Making back-up copies of valuable data in your computer is recommended.

Caution about Radio Wave

This unit operates in 2.4 GHz band, the same frequency band used for industrial, scientific, and medical equipment (such as pacemaker), as well as amateur radio stations.

Please read "Safety Instructions" section and make sure the following cautions.

1. Be sure that there are no other devices in the area that may use the same frequency band as Projector.
2. If any other devices are causing radio interferences, change the communication frequency channel or move to other location.

Trademarks and Copyright

- Macintosh is a registered trademark of Apple, Inc. in the USA and other countries.
- PowerPC is a registered trademark of IBM Corporation.
- Intel Core is a registered trademark of Intel Corporation in the USA and other countries.
- Other company names, product names or other names noted in this manual are trademarks or registered trademarks of the respective companies. Note that ® and TM marks are not indicated in the text of this manual.

Notes

- The contents of this manual are subject to change without notice.
- You may not copy the printed materials accompanying with the software.
- We shall not be responsible for any damages caused by reliance on this manual.

Expression/Abbreviation

The OS of the computer and the Web browser described in this manual is MAC OS X v10.4 and Safari 3. In case of another OS or Web browser, some instruction procedures may differ from the actual operation depending on your computer environment.

Use of this manual

This manual does not provide the description of basic operation and functions for computer, web browser, projector and network. For instructions about each piece of equipment or application software, please refer to the respective booklet.

Table of contents

Compliance	2
Safety instructions	4
Table of contents	5
Operating environment and configuration	7
Required operating environment for computers	7
Network specifications of the projector	8
Useful guide to the network function	9
● How to project the computer screen's image via the network	9
● How to setup or control the projector by using a PC via the network	9
● How to use all functions concerning the network	9
1. About LAN functions	11
LAN functions and the features	12
Image projecting system via LAN	12
An example of the connection	13
LAN connection modes	14
2. Setup procedures	17
Installing the software	19
3. Names and functions of the operation screen	23
Network connection standby display	24
Network Capture 5 window	25
4. Wired LAN configurations	27
Connecting to the LAN line	28
Network environment settings	28
Confirming the operation	30
Network PIN code	32
Network information	32
Wired factory default	33
Wired LAN factory default settings	34
5. Wireless LAN configurations	35
Setting the network environment	36
Setting procedures	36
Configuring security with the projector	38
Easy wireless setting	43
Network PIN code	44
Network information	44

Wireless factory default	44
WIRELESS indicator display	45
Wireless LAN factory default settings	46

6. Basic setting and operation47

Starting up the Browser	48
How to use the setting page	50
Initial setting.....	52
Network configuration	55
Configuring wireless LAN setting and security setting.....	57
E-mail setting	60
SNMP setting.....	64

7. Controlling the projector67

Power control and status check	68
Controls	70
PC adjustment	74
Setting up the projector.....	75
Timer setting	78
Projector information.....	81
Multi-control	83

8. Network capture functions89

About Network Capture function.....	90
Using the Real Time Capture	93
Error information	98

9. Appendix99

Use of telnet	100
Web browser setting	102
Firewall setting for MAC OS X v 10.4.....	105
Firewall setting for MAC OS X v 10.5.....	106
Troubleshooting.....	107
Terminology.....	110

Operating environment and configuration

Required operating environment for computers

When operating the projector via the networks, computers should meet the operating environment below.

OS		MAC OS X v 10.4 or later
CPU		800 MHz PowerPC G4 or faster, or 1.8 GHz Intel Core processor or faster
Memory		256MB or more (512MB is recommended)
Free HDD Space		100MB
Screen Resolution		Required to support any of VGA (640 x 480), SVGA (800 x 600), XGA (1024 x 768), The color number should be either 16 bit (65536 colors) or 24/32 bit (16.77 million colors).
Communication Protocol		TCP/IP
Network Correspond	Wireless LAN	Correspond to IEEE802.11b/g/n
	Wired LAN	Correspond to 100BASE-TX (100Mbps) /10BASE-T (10Mbps)
Browser Application		Safari 3.0 or later

Network specifications of the projector

LAN Terminal

Data communication speed	100Base-TX (100Mbps)/10Base-T (10Mbps)
Protocol	TCP/IP

Wireless LAN

Interface	IEEE802.11b/g/n
Communication Mode	AdHoc, Infrastructure
Data Transfer Speed	1/2/5.5/11Mbps (IEEE802.11b) 6/9/12/18/24/36/48/54Mbps (IEEE802.11g) Max Speed 150Mbps(IEEE802.11n)
Wireless Frequency (Channel)	2412MHz–2462MHz (CH1–CH11)
Modulation Form	IEEE802.11g OFDM 54/48Mbps 64QAM, 36/24Mbps 16QAM, 18/12Mbps QPSK, 9/6Mbps BPSK IEEE802.11b DSSS 11/5Mbps CCK, 2Mbps DQPSK, 1Mbps DBPSK IEEE802.11n OFDM
Protocol	TCP/IP
Security	WPS Push Button, WPS PIN code, WEP 64Bit (Open/Shared) /WEP 128Bit (Open/Shared), WPA-PSK(TKIP), WPA2-PSK(AES), SSID, ESSID
Service area	about 30 m (without disturbance) Differs according to the operating environment.

Compliance

Countries and Standards	JAPAN: VCCI ClassB,TELEC (Wireless)
	USA: FCC Part15 Subpart C (Wireless) FCC Part15 Subpart C, Class B
	Canada: IC RSS-210 (Wireless), IC ICES-003 ClassB
	Europe: R&TTE, EMC, LVD

The wireless LAN can be used in the following countries and regions. There are restrictions on channels and frequencies in the countries and regions at which you can use the wireless communication.



Austria / Belgium / Bulgaria / Cyprus / Czech / Denmark / Estonia / Finland / France* / Germany / Greece / Hungary / Iceland / Ireland / Italy / Lithuania / Latvia / Liechtenstein / Luxembourg /



Malta / Poland / Portugal / Norway / Netherlands / Romania / Slovakia / Slovenia / Spain / Sweden / Switzerland / Turkey / U.K.

* Outdoor use limited to 10mW eirp within the band 2454 - 2483.5MHz.

Useful guide to the network function

This manual describes the operation procedure of the projector's network menu and the provided application software for Macintosh users. Please refer to this manual depending on the situation.

● How to project the computer screen's image via the network

To project the computer screen's image via the network, you need to make a network setting in the projector and connect the projector to the network, or if you use the supplied USB memory, you can project the computer screen's image via the network without making a network setting.

Check 1

Did you make a network setting in the projector?

Yes

No



Project the image by using the Auto Capture program on the supplied USB memory. (p.97)



Check 2

Did you install the supplied application?

Yes

No



- Control by the projector (p.93, 96)
- Control by the web browser (p.93, 95)



Project the image by using the Real Time Capture function in the supplied 'Network Capture 5' application. (p.93, 94)

● How to setup or control the projector by using a PC via the network

To setup or control the projector via the network, you need to make a network setting in the projector and connect the projector to the network.

Check

Did you make a network setting in the projector?

Yes

No



You cannot setup or control the projector via the network without making a network setting in the projector. Please make a network setting. [Wired LAN configurations (p.27-34)/Wireless LAN configurations (p.35-46)]



Setup or control the projector by controlling the web browser of the PC.
[Setup (p.47-66)/ Control p.67-88)].

● How to use all functions concerning the network

To use all functions concerning the network of this projector, you need to make a network setting in the projector and install the supplied application. Please follow the procedure on page 18.

Chapter 1

1. About LAN functions

This chapter describes the features, the mechanism, and connection procedures of the LAN.

LAN functions and the features

This product is loaded with a LAN network function which enables you to project an image on the computer through a projector via Network with dedicated software.

With the software, you can also manipulate the projecting image and the projector.

This software has functions below and you can use the projector under various network environments to meet the wide-ranging needs of the operation.

- Accept both Wired and Wireless LAN environment. When the projector is operated via Wireless LAN, there is no need for wire connection.
- Remove the burden of LAN settings. Easy LAN setting function is provided.
- One computer image can be projected up to 5 projectors simultaneously.
- Network capture function to project the computer's screen image through the projector.
- Remote function which allows you to operate the projector from a distance.
- Monitoring function for the projector operation.
- E-mail function which reports the operating status to your maintenance management.
- Multi control function which can operate multiple projectors (up to 100) simultaneously.

☞ "USB display" is Windows-compliant, but non-Mac-compliant.

☞ The projector can not reproduce the sound during the network capturing with Macintosh.

Image projecting system via LAN

The images are projected through an image capturing system which helps to project the faithful computer images. With this system, you can use the product under various application environments despite the differences of application software.

Flow of Image Transfer

1. Download the computer image with the dedicated software faithfully to the real image.
2. The downloaded data will be compressed to the digital signal and transferred to the projector via the LAN (Wired or Wireless). (One computer can operate up to 5 projectors simultaneously.)
3. Digital signal will be reproduced into RGB image signal and will be projected by the projector.

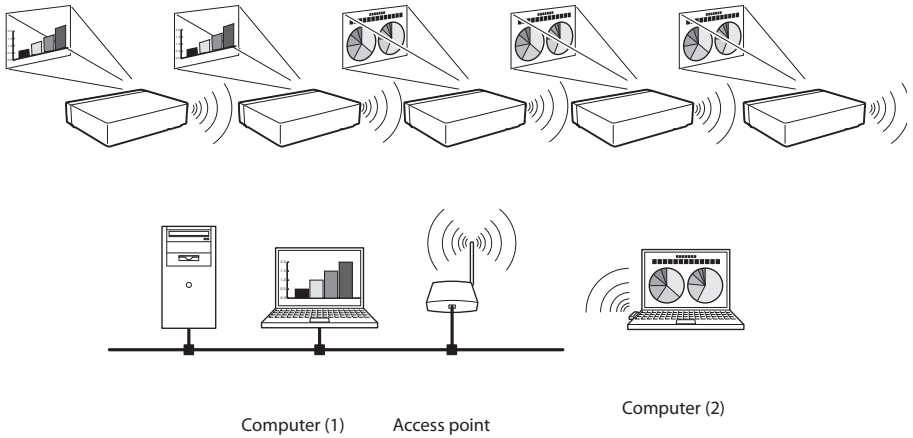
* The image will be transferred to each projector. The time lag can occur between each projection.

CAUTION: This product does not correspond to the application with DirectX, MS-Office assistant, and video replay such as DVD.

An example of the connection

The illustration below shows an example of the projection via the LAN.

You can project the image on Computer (1) (Wired LAN connection), or Computer (2) (Wireless LAN connection) through the selected projector .



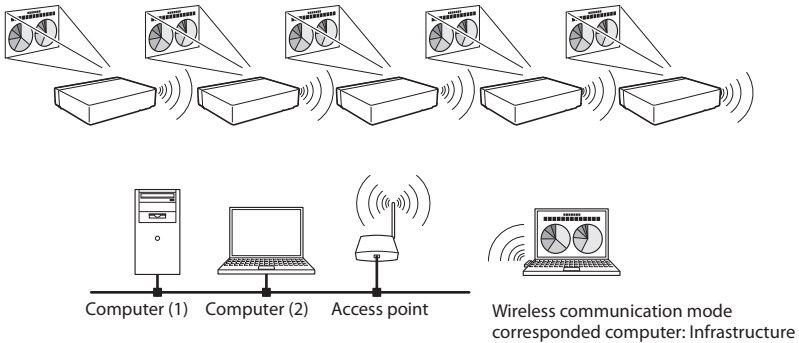
LAN connection modes

Connection modes differ depending on the LAN and computer environments.

Connect appropriately for each environment.

■ Wireless LAN, Infrastructure Communication Mode

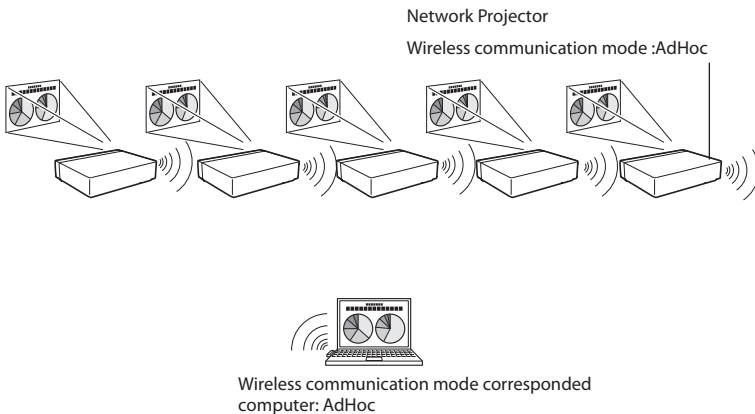
Communicate over an access point between Wired LAN equipment and Wireless LAN equipment. Or, communicate over an access point among multiple Wireless LAN equipment. Wireless LAN equipment will select an access point to communicate SSID/ESSID modes. These communication modes are used when both Wireless LAN and Wired LAN are used in the same network environment.



■ Wireless LAN, AdHoc Communication Mode

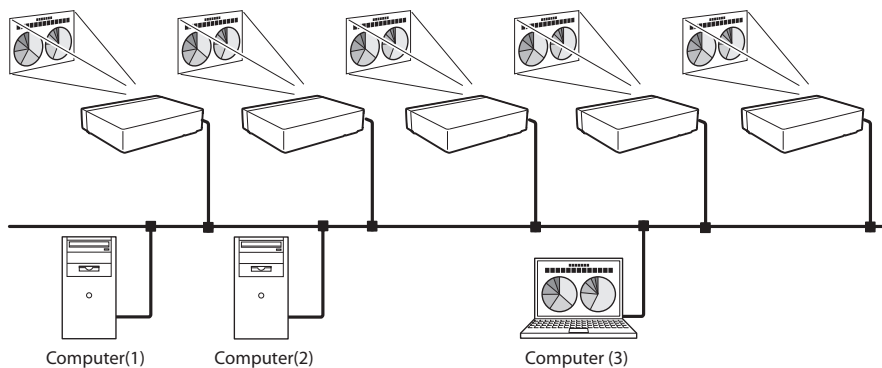
Communication mode between Wireless LAN equipment.

(Communication mode via SSID/ESSID)



■ Wired LAN Communication Mode

Communicate via the LAN line.



* Operate the computer mouse with the remote control.

When the projector's remote control employs mouse operating function, you can operate the computer by the remote control. To use the remote control, point to the projector. You do not need to connect the USB cable to operate the computer mouse.

Chapter 2

2. Setup procedures

This chapter describes how to install the Network Capture 5 software and how to set up the networks.

To use the projector via the networks, follow the setup procedures below.

STEP 1

Install the software on computers.



Install the software recorded in CD-ROM on each computer which will be operated.
Read following pages of this chapter to install.

STEP 2

Select Wired LAN or Wireless LAN then connect the LAN and set the configuration.



Decide depending on the LAN environment.

Wired LAN..... Refer to "4. Wired LAN Configurations" (pp.27–34).

Wireless LAN Refer to "5. Wireless LAN Configurations" (pp.35–46).

Detailed LAN configurations need to be done with a browser later.

First, complete the Wired or Wireless LAN connection between computers and projectors, then start browser configurations.

→ "6. Basic setting and operation" (pp.47–66).

STEP 3

Network Configuration has completed.

Follow each chapter to project an image and operate the projector.

■ Operate and manage the projector → "7. Controlling the projector" (pp.67-88)

→ "Power control and status check" (p.68)

→ "Controls" (p.70)

→ "PC adjustment" (p.74)

→ "Setting up the projector" (p.75)

→ "Timer setting" (p.78)

→ "Projector information" (p.81)

→ "Multi-control" (p.83)

■ Project an image on the computer → "8. Network capture functions" (pp.89-98)

→ "Using the real time capture" (p.93)

* Even if Network Capture 5 is not installed into the computer, the wireless LAN can be set up with USB memory. (p.97)

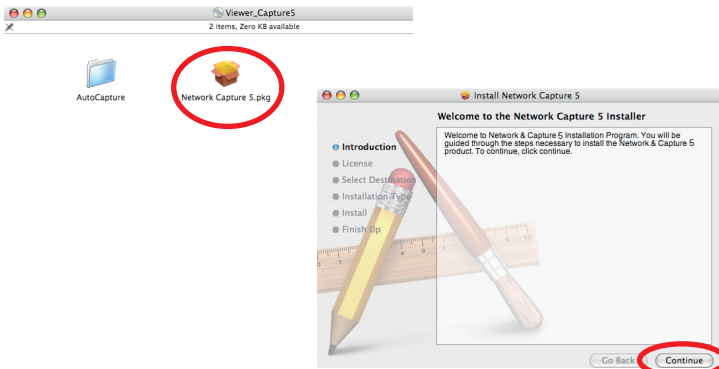
Installing the software

It is required to install the software into your computer to use the Network Capture function . Please install the software as follows.

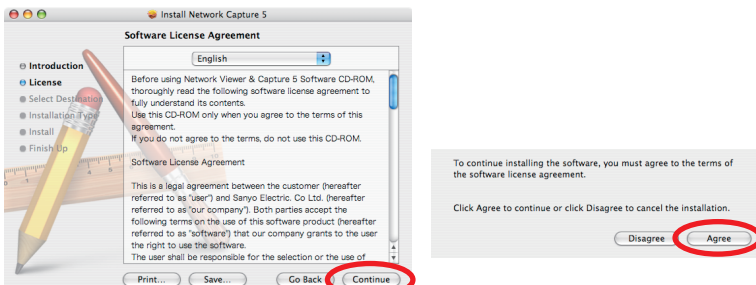
Note: To install the software into the computer, logon as an administrator. Before installation, make sure that the other applications are closed, otherwise proper installation cannot be made.

Network Capture 5 installation

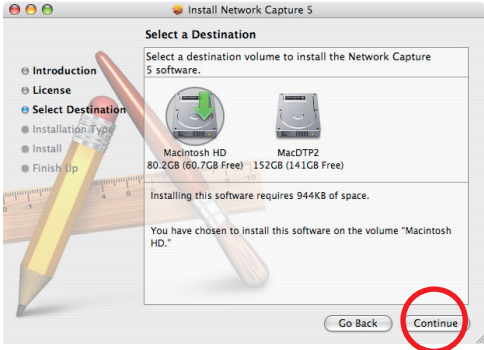
- 1 Set the supplied Network Capture 5 CD-ROM into the CD-ROM drive of your computer. Double click **Network Capture 5.pkg**.
- 2 Click **Continue** on the introduction screen.



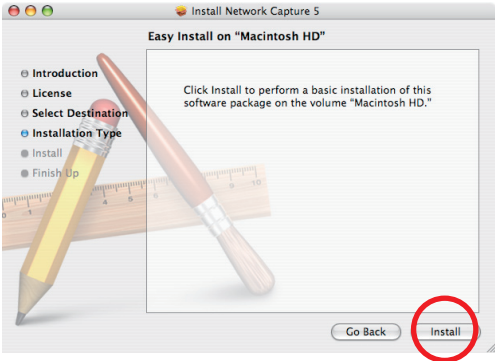
- 3 As the "License Agreement" will appear, read contents carefully, click **Continue** button and click **Agree** if you agree on the next screen to the license agreement to proceed with installing.



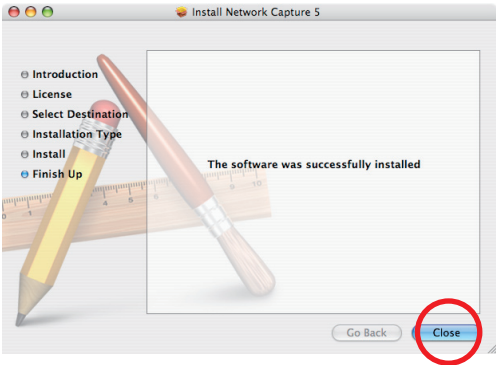
4 Select a Destination, and Click **Continue**.



5 Click **Install** to perform a basic installation.



6 Click **Close** to complete the installation.

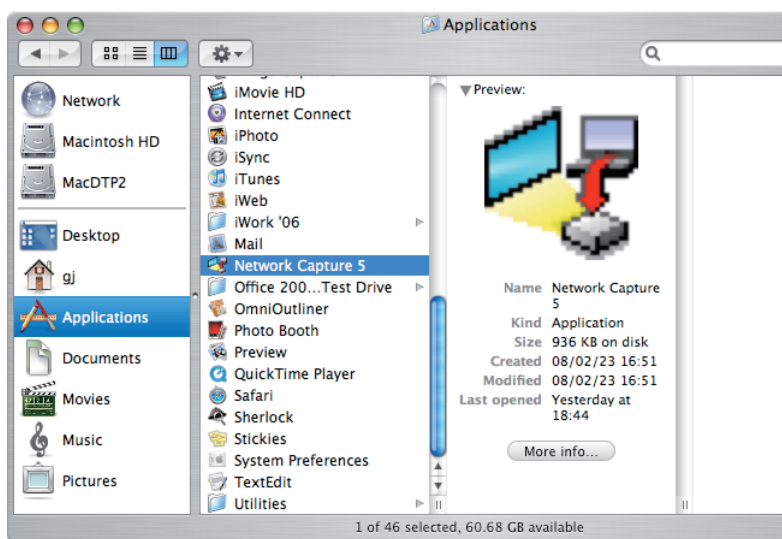


Installed software

The following software is installed on your computer.

● **Network Capture 5:**

Captures the displayed image of the computer and serves it to the projector via the network.



* Move to Trash to uninstall this software.

3. Names and functions of the operation screen

This chapter describes the functions of each part of the operation screen.

Network connection standby display

Turn on the projector and select either “Wired” or “Wireless” from the input menu of the projector. The “Please wait...” message will be displayed on the screen. After short time, the network connection standby display screen will appear as below. While the “Please wait...” message is shown, some operations are invalid.

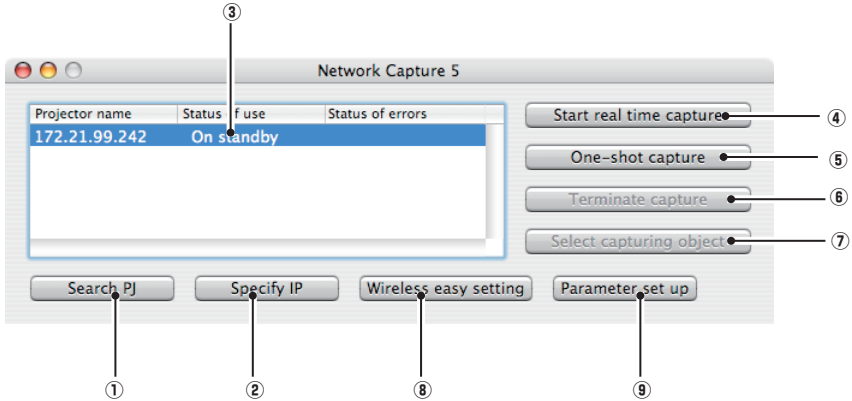
Network Connection Standby Display



Network Capture 5 window

This software is to project the computer screen via the networks.

Click "Network Capture 5" from "Macintosh HD" --> "Application" --> "Network Capture 5" menu, then following screen will appear. Then the program will start.



Parts Names and Functions of the Screen

① Search PJ button

Search the projector connected to the networks.

② Specify IP button

When connected to a different segment network, the projector can not be retrieved automatically. In that case, press this button, the "Search specified IP address list" window appears, and then click Add button and enter the IP address directly to specify the projector in another window. The registered multiple IP addresses can be searched at a time.

③ Network Projector List

Display all the projectors connected to the networks.

Show unoccupied projector as "On standby" and occupied projector as "Real time capturing" or "In One-shot mode". The indication of the status of use with "#" indicates that your computer is now using the network capture function.

After double-clicking on a projector name, the web browser gets activated and the projector setup screen will be displayed.

④ Start real time capture button

Capture (Project) the computer screen in real time. After the execution of "Start real time capture", the application window disappears. ... ❖

⑤ One-shot capture button

Copy and capture (project) the computer screen without modification. After the execution of One-shot capture, the application window disappears. ... ❖

⑥ Terminate capture button

Terminate the real time capture and the One-shot capture.

⑦ Select capturing object button

It is possible to designate the window to capture individually. This button is disabled by default, so the full screen is captured. It is possible to change the capturing object function setting at parameter settings. For detail, refer to "Parameter set up" (p.92).

⑧ Wireless easy setting button / Wireless easy release button

Configure the Wireless LAN setting just by clicking this button. (The setting will be stored as AdHoc system) For details, refer to "5. Wireless LAN configurations"-->"Easy wireless setting" (p.43). To restore the easy setting, press the Wireless easy release button.

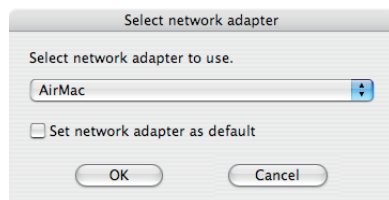
⑨ Parameter setup button

Activate the parameter setup window, and execute the connections setting and the image setting. For detail, refer to "Parameter set up" (p.92).

❖ To show the application window again, refer to the item "Commands on the menu bar" (p.91).

Using the multiple network adaptors

When your computer provides multiple network adaptors, the network adaptor selecting window will appear each time the Network Capture 5 software starts. Select a network adaptor and check the "Set network adaptor as default" and then click OK. To change the setting, refer to the item "Parameter set up" (p.92).



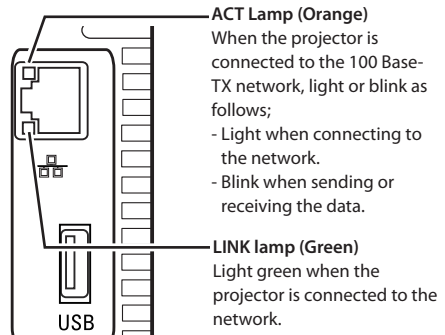
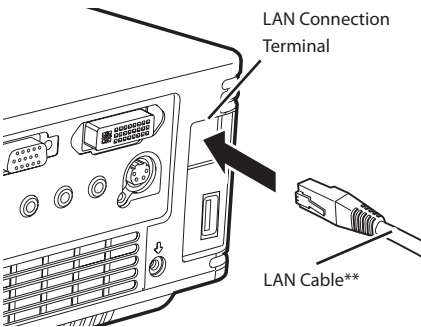
4. Wired LAN configurations

This chapter describes the preparation for Wired LAN setting with projectors and how to set the LAN environment.

Setting procedures and contents differ depending on the LAN installation location.
When installing, consult your system administrator to set up the LAN appropriately.

Connecting to the LAN line

Connect the shielded LAN cable to the LAN connection terminal of the projector.



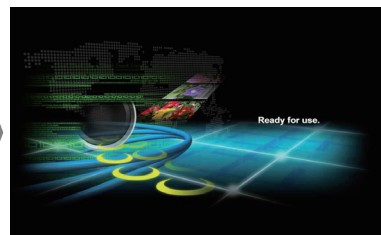
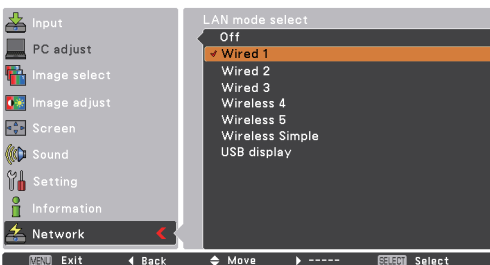
** Please use a shielded LAN cable .

Network environment settings

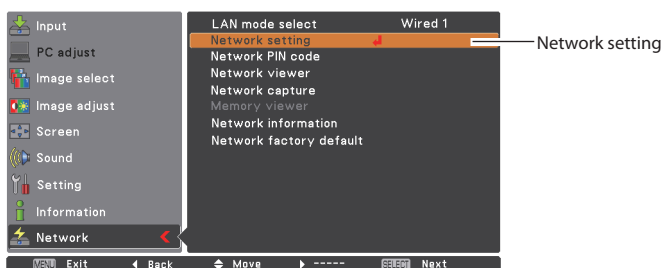
Set the Wired LAN network through the projector menu. Detailed network settings will be made with browser. Refer to "6. Basic setting and operation" (pp.47-66). First, complete the settings described in this chapter before performing steps in "6. Basic setting and operation."

Setting Procedure

1. Turn on the projector and select "Network" from the input menu of the projector.
2. Select "LAN mode select" in the Network menu, and press Point ► or SELECT button.
3. Select similar LAN environment among Wired1, 2 and 3 with the Point ▲▼ buttons. Then the Menu will disappear, the "Please wait..." message will appear, and switching operation will start. Switching will take a while and after completing the operation, the "Ready for use" message will appear, and the projector's LINK/ACT Lamp will be on or blink.



- Select "Network setting" in the Network menu and press **SELECT** button, and then the LAN setting screen will appear and selected LAN settings will be displayed. Adjust each item to the setting environment. Consult your system administrator about the detailed settings.
Move among the items with the Point **▲▼** buttons and press **SELECT** button, move among the columns with Point **◀▶** buttons, adjust the figures with Point **▲▼** buttons, and then press **SELECT** button to set.
- After completing all the settings, select "Set" and press **SELECT** button. Now, all procedures have been done. To cancel the adjusted settings, select "Cancel" and press **SELECT** button.
To confirm whether the settings are correct, follow the procedures described from the next page.
You can confirm the LAN settings you have made from "Network Information" (p.32). In such cases that the LAN cannot be connected, see this screen.



DHCP: On

LAN 1		Wired setting			
DHCP	On				
IP address	
Subnet	
Gateway	
DNS	

Set Cancel

Exit Back Move Next Select

DHCP: Off

LAN 1		Wired setting			
DHCP	Off				
IP address		169	254	100	100
Subnet		255	255	255	0
Gateway		255	255	255	255
DNS		255	255	255	255

Set Cancel

Exit Back Move Next Select

Item	Description
------	-------------

- | | |
|------------------|--|
| DHCP | Sets DHCP function On or Off. When you setup the network setting manually, select "Off".
When it is set On, IP address, Subnet, Gateway and DNS are automatically set according to your network environment *1. |
| IP address | Sets IP address of the projector |
| Subnet | Sets Subnet mask. Normally sets 255.255.255.0 |
| Gateway*2 | Sets IP address of the default gateway (Router) |
| DNS*3 | Sets IP address of the DNS server. |

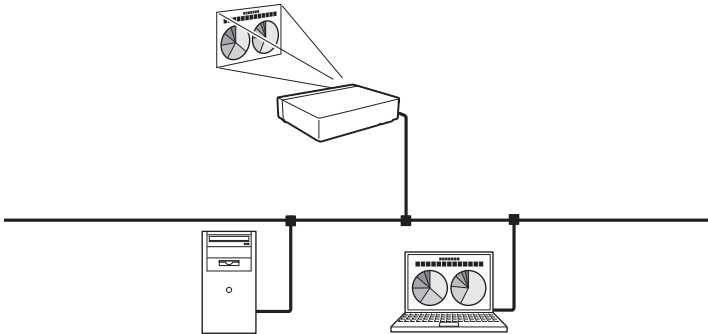
*1 Set "On" only when the DHCP server is available on your network environment.

*2 Set [255.255.255.255] if the network does not provide the gateway (router).

*3 Set [255.255.255.255] if you do not use the function E-mail alert.

Confirming the operation

Confirm that the projector has connected to the LAN properly.



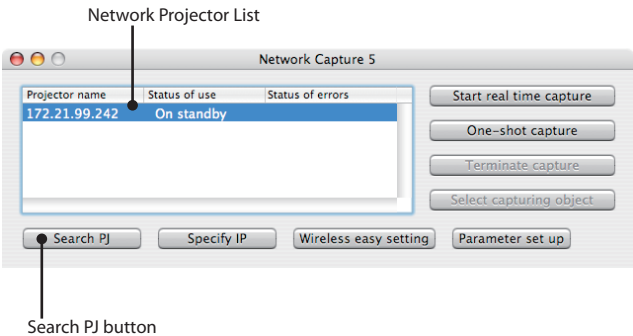
- 1. Activate "Network Capture 5" which is installed into the computer connected to the LAN .
- 2. After "Searching projector" message appears, the name of the projector* appears on the Network Projector List, then the network setting has completed properly.

When the name of the projector does not appear and error screen appears, the network has not connected yet. Try searching again with the **Search PJ** button. If error screen appears again, reconfirm the LAN setting. When the projector is set in the location separated by the router, see next page.

When Firewall function (Anti-virus software) is effective, network projector may not be found. In that case, disable the Firewall function and try searching again.

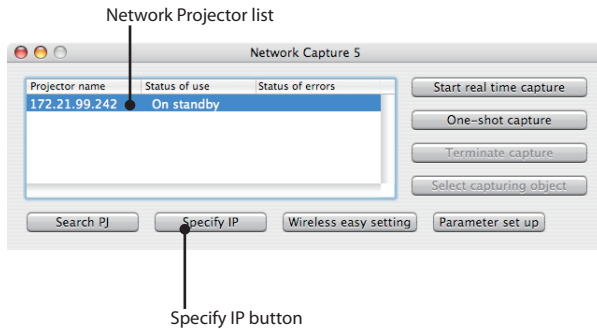
* If the projector is named, the name will be displayed. The name can be set with the following procedures in "6. Basic setting and operation" → "Initial setting" (p.52) . If the projector is not named, IP address of the projector will be displayed.

Network Capture screen

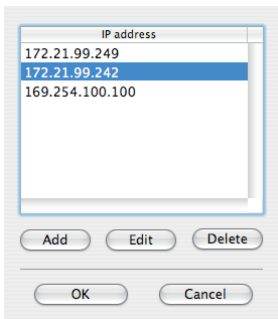


When set up the projector in the location separated by the router and the segment is different; Projector will not be found nor displayed. In that case, the projector needs to be searched directly by the IP address.

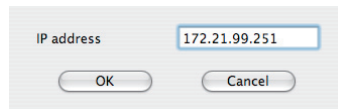
1. Press **Specify IP** button. The "Search specified IP address" window appears.
2. Click **Add** button, "IP address set up" window appears. Enter the IP address of the projector and Click **OK** button. Then, the projector will be added on the "Search specified IP address" window. Multiple projectors are registered and they are stored even when the application is closed.
3. Click **OK** button on the "Search specified IP address" window, the registered multiple projectors will be searched. Then, the projector will be added on the Network Projector List of the application window.



"Search specified IP address" window



"IP address set up" window

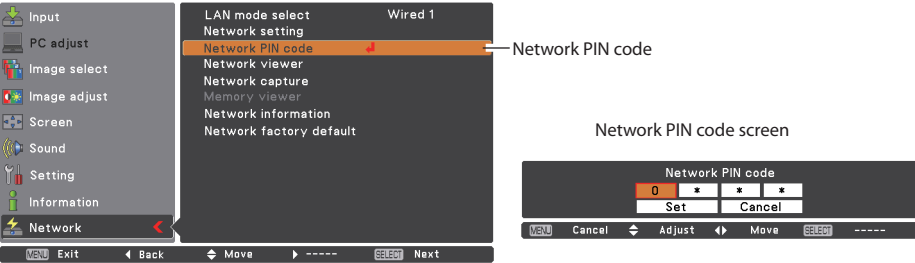


Network PIN code

The Network PIN code is to restrict the access from the networks to the projector.
After setting the Network PIN code, you need to enter it to operate the projector via the networks.

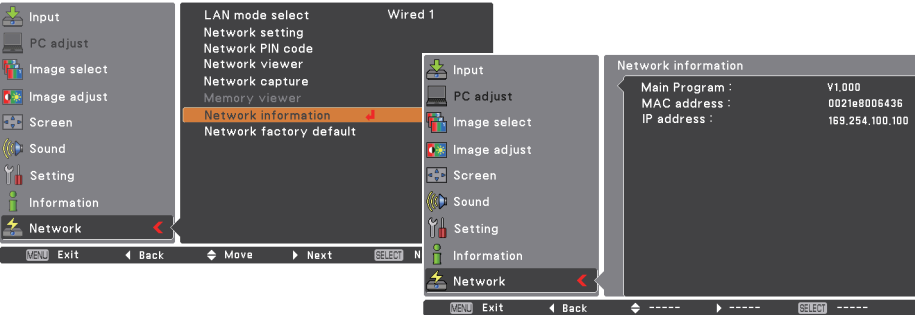
1. Select "Network PIN code" in the Network menu, and press **SELECT** button.
The Network PIN code screen will appear.
2. Set the Network PIN code.

Set the figures with the Point ▲▼ buttons and move to the next items with the Point ◀▶ buttons.
Select "Set" and press **SELECT** button to set. To cancel the preset Network PIN code, select "Cancel".
When you do not want to set the Network PIN code, set 0000.
It is recommended to set the Network PIN code if you use the projector via the networks. The Network PIN code can be set also through the networks. See "6. Basic setting and operation" → "Initial setting" → "Network PIN code setting" (p.53).



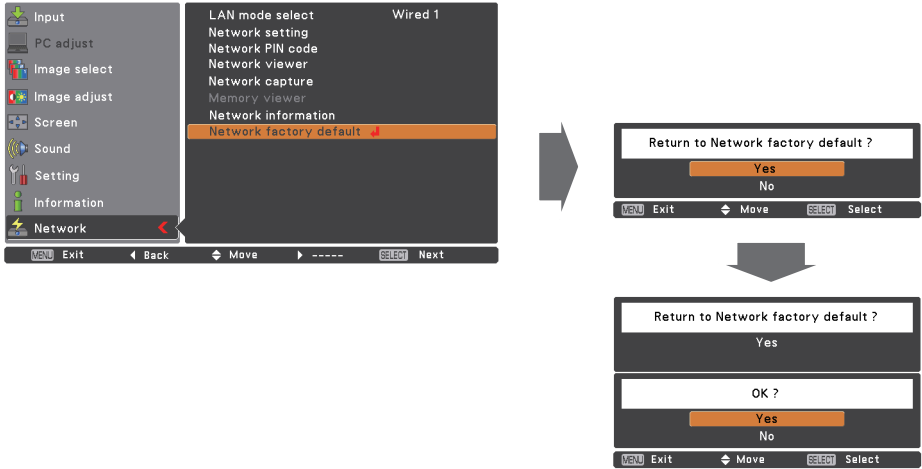
Network information

Select "Network information" in the Network menu and press Point ▶ or **SELECT** button to show LAN setting environment of the currently selected projector. (The description below is an example and different from what will be shown.)



Wired factory default

Select "Wired factory default" in the Network menu and press **SELECT** button. All the wired LAN settings will go back to the factory default settings. For details, refer to "Wired LAN factory default settings" (p.34).



Wired LAN factory default settings

Parameter	SELECTED LAN		
	Wired 1	Wired 2	Wired 3
DHCP	OFF	ON	OFF
IP ADDRESS	169.254.100.100	192.168.100.100	192.168.100.100
SUBNET MASK	255.255.0.0	255.255.255.0	255.255.255.0
GATEWAY ADDRESS	255.255.255.255	255.255.255.255	255.255.255.255
DNS ADDRESS	255.255.255.255	255.255.255.255	255.255.255.255

5. Wireless LAN configurations

This chapter describes the preparation for Wireless LAN setting with projectors and how to set the LAN environment.

This projector contains the Wireless LAN module.

The setting procedures and configurations differ depending on the LAN installation location. Consult your system administrator for installation and set the LAN appropriately.

To operate via Wireless LAN, your computer has to be equipped with a Wireless LAN card adapter which supports IEEE 802.11b/g/n.

If connecting in Infrastructure mode with an access point, the access point is required to support IEEE 802.11b/g/n.

Caution: Do not use a mobile phone or PHS near (within 20cm/8inch) the projector. It may cause malfunction.

Setting the network environment

The projector contains the Wireless LAN adapter.

Set the Wireless LAN network through the projector menu.

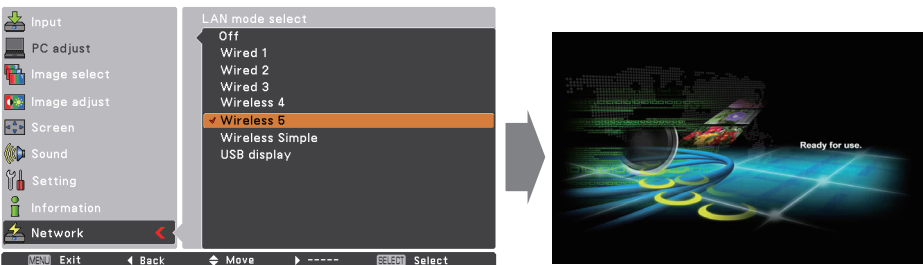
Detailed network settings will be made with browser. Refer to "6. Basic setting and operation". → "Network configuration" (p.55). Complete the settings described in this chapter before performing the steps in "6. Basic setting and operation."

Setting procedures

1. Turn on the projector and select "Network" in the Input menu of the projector.
2. Select "LAN mode select" in the Network menu, and press Point ► or **SELECT** button.
3. Select similar LAN environment among Wireless 4, Wireless 5 and Wireless Simple* with the Point ▲▼ buttons. Then the Menu will disappear, the "Please wait..." message will appear, and switching operation will start. Switching will take a while and after completing the operation, the "Ready for use" message will appear.

For each settings, refer to "Wireless LAN factory default settings" on page 46.

* "SIMPLE" mode is used for simple setting without complicated LAN setting procedures to connect to the Wireless LAN. See "Easy wireless setting" (p.43) for details.



4. Select "Network setting" in the Network menu and press **SELECT** button, and then the LAN setting screen will appear and the selected LAN settings will be displayed. Adjust each item to the setting environment. Consult your system administrator for the detailed settings.

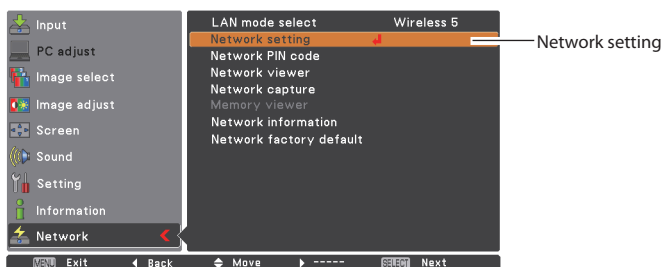
Move among the items with the Point ▲▼ buttons and press **SELECT** button, move among the columns with Point ◀▶ buttons, adjust the figures with Point ▲▼ buttons, and then press **SELECT** button to set.

When the network type is "AdHoc", you do not have to change "Sub net" and "Gateway" and leave them as default settings.

SSID/ESSID for the network type "Infrastructure" and "AdHoc" are required to be entered the same characters into the projector, the access point, and the Wireless LAN compatible computer (up to 32 characters). Characters can be selected from A~Z, a~z, blank (space), 0~9, or - (hyphen) with the Point ▲▼ buttons. Move to the next character with the Point ◀▶ buttons.

5. After completing all the settings, select "Set" and press **SELECT** button. Now, all procedures have been done. To cancel the adjusted settings, select the "Cancel" and press **SELECT** button.

If you want to set the security, select "Next" and press **SELECT** button to proceed to the security setting window and refer to the following pages in detail.



DHCP: On

LAN 5		Wireless setting		1/2
DHCP		On		
IP address			
Subnet			
Gateway			
DNS			
Network type	Infrastructure			
SSID/ESSID	W I R E L E S S			
<div>Next Set Cancel</div>				

DHCP: Off

LAN 5		Wireless setting		1/2
DHCP		Off		
IP address	192	168	100	100
Subnet	255	255	255	0
Gateway	255	255	255	255
DNS	255	255	255	255
Network type	Infrastructure			
SSID/ESSID	W I R E L E S S			
<div>Next Set Cancel</div>				

For configuring of WEP, WPA-PSK, WPA2-PSK security, select "Next". Refer to "Configuring security with the projector" on next page for details.

Item	Description
DHCP	Sets DHCP function On or Off. When you setup the network setting manually, select "Off". When its set On, IP address, Subnet, Gateway and DNS are automatically set according to your network environment *1.
IP address	Sets IP address of the projector
Subnet	Sets Subnet mask. Normally sets 255.255.255.0
Gateway*2	Sets IP address of the default gateway (Router)
DNS*3	Sets IP address of the DNS server. Must be set when the E-mail function is used.
Network type	Sets Infrastructure or AdHoc mode. When the "AdHoc" is selected, the security "WPA-PSK" and "WPA2-PSK" are not available.
SSID/ESSID	Identifier of the wireless access point.

You can confirm that the projector settings from "Network Information" in the projector menu (p.44). To confirm whether the settings are correct, follow the procedures in "4. Wired LAN configurations" → "Confirming the Operation" (p.30).

*1 Set "On" only when the DHCP server is available on your network environment.

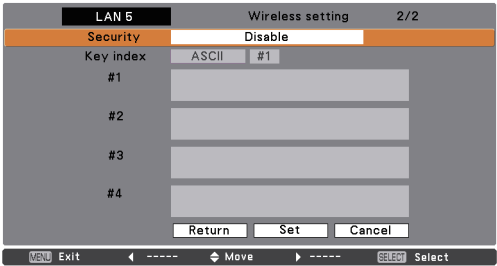
*2 Set [255.255.255.255] if the network does not provide the gateway (router).

*3 Set [255.255.255.255] if you do not use the function E-mail alert.

Configuring security with the projector

Configure security with the projector by following the steps below.
After configuring the network in "5. Wireless LAN Configurations" (p.35-46), select "Next" in the LAN setting screen and press **SELECT** button. The security configuration screen appears. Refer to "6. Basic setting and operation" → "Configuring wireless LAN setting and security setting" (p.57) as well.

WEP configuration screen



Use the Point ▲▼ buttons to select the security type. To disable the security, select "Disable."
Use the Point ▲▼ buttons to move among the items and adjust setting; use the Point ◀▶ buttons to move among the character positions of the key entry fields.

This projector provides the following security options. Use optimum security option on your network environment.

- WPS Push Button
- WPS PIN code
- WEP64(40)bit Open
- WEP64(40)bit Share
- WEP128(104)bit Open
- WEP128(104)bit Share
- WPA-PSK(TKIP)
- WPA2-PSK(AES)

Notes when entering characters:

The "¥" symbol is displayed as "\" when the ASCII key is used. The "*" symbol is treated as a character by the ASCII key, but it is not interpreted as a character by the HEX key. In HEX, the "*" symbol is displayed in red and setting is denied.

You can not set all the characters with the "*" symbol. This will be considered as no operation.

ASCII key characters : Space - 0 to 9 A to Z a to z ! " # \$ % & ' () * + , . / : ; < = > ? @ [¥] ^ _ ` { | } ~

HEX key characters : 0 to 9 a to f

Use of security type "WPS"(Wi-Fi Protected Setup)

By using WPS (Wi-Fi Protected Setup), the communication via ESSID and WPA2 security type between the Wireless LAN access point and the projector can be configured without complicated setting procedures.

There are 2 ways; "WPS Push Button" which is pressed each button of the wireless LAN access point and the projector to setup and "WPS PIN code" which is input eight-digit number, which is set to the projector, to the wireless LAN access point to setup.

WPS Push Button
configuration screen

LAN 5		Wireless setting 2/2	
Security		WPS Push Button	
Key index	ASCII	#1	
#1			
#2			
#3			
#4			
		Return	Set Cancel
MENU Exit		Move	SELECT Select

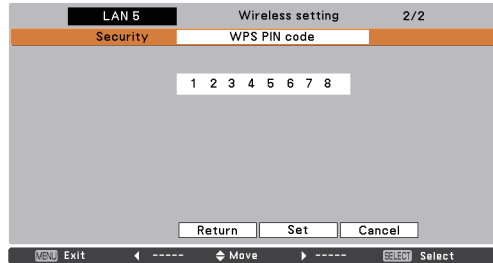
WPS Push button

1. Select "WPS Push Button" in "Security" Menu, and press SELECT button. Use the Point ▲▼ buttons to select "Set" and "WPS Push Button" will be active by pressing the SELECT button.
2. Press "WPS" button of access point after starting the operation of "WPS Push Button" within 2 minutes. For the operating instructions of access point, refer to the manual of access point. When the setting of "WPS" of the access point is completed, the communication will start between the access point and the projector and WPS auto-setting process of the projector will be performed. During the auto-setting process, "Please wait ..." message will appear.
3. When the auto-setting process is completed, "WPS Push Button OK" message will appear. After the auto-setting process is completed, security items except "WPS Push Button" are displayed in grayout and cannot be changed. Confirm the auto-setup IP address and ESSID in "Network information". If the auto-setup process is not succeeded, "Failed in WPS setting. Please reset" message will appear and "Security" items will return to "Disable".

WPS PIN code

1. Select "WPS PIN code" in "Security" Menu, and press SELECT button. Use the Point ▲▼ buttons to select "Set" and "WPS PIN code" will appear by pressing SELECT button.

WPS PIN code
configuration screen



2. Configure the eight-digit number of "WPS PIN code" which is displayed to the access point according to the instructions manual of the access point. And then select "Set" and press SELECT button within 2 minutes after configuration of the access point.

The communication will start between the access point and the projector and the WPS auto-setting process of the projector will be performed. During the auto-setting process, "Please wait ..." message will appear.

3. When the auto-setting process is completed, "WPS PIN code OK" message will appear.

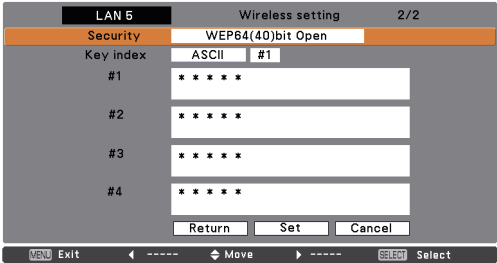
After the auto-setting process is completed, the security items except "WPS PIN code" are displayed in grayout and cannot be changed. Confirm the auto-setting IP address and SSID in "Network information". If the auto-setting process is not succeeded, "Failed in WPS setting. Please reset." message will appear and the "Security" item returns to "Disable".

☞ When there is plural access points, WPS PIN code sets the connection vis-a-vis the access point whose the radio wave strength is strongest. So, when setting WPS PIN code, please set the projector in the vicinity of the access point which you want to connect. If the setting with WPS PIN code is not succeeded, please try the setting with WPS Push button.

Use of security type "WEP"

- 1. Use the Point ▲▼ buttons to select "WEP" security type.
- 2. Select "Key index". Use the Point ▲▼ buttons to choose the HEX or ASCII key. The four (#1-#4) kinds of WEP keys can be configured. Use the Point ◀▶ buttons to move to the right frame; use the Point ▲▼ buttons to select a WEP key number (#1-#4).

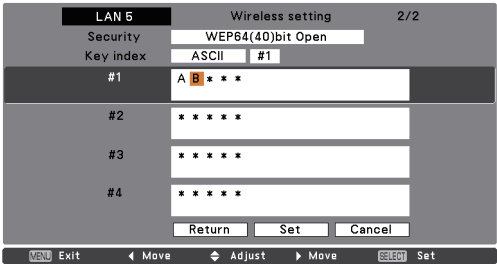
WEP configuration screen



Refer the table below for the usable number of characters at the WEP security option.

WEP option	Characters
WEP64(40)bit ASCII	5 characters
WEP64(40)bit HEX	10 characters
WEP128(104)bit ASCII	13 characters
WEP128(104)bit HEX	26 characters

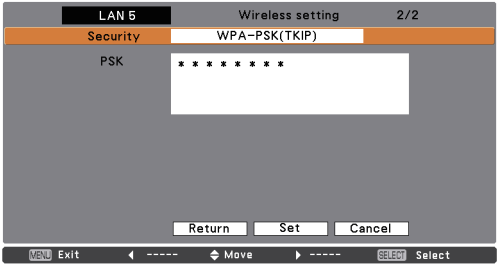
- 3. Use the Point ▲▼ buttons to select the Type field of the WEP key number that corresponds to the one you selected above and press **SELECT** button. The WEP key entry screen appears. In the WEP key entry field, all characters are displayed in "*". Use the Point ▲▼ buttons to select a character; use the Point ◀▶ buttons to select a character position. Enter all the characters displayed with "*".
When you select HEX at WEP key index and the entry key contains "*", the "*" symbol is displayed in red and setting is denied.
- 4. Use the Point ▲▼ buttons to select "Set" and press **SELECT** button to return to the Wireless setting screen. Select "Set" in the Wireless setting screen to complete the network setting.



Use of security type "WPA-PSK", "WPA2-PSK"

1. Use the Point ▲▼ buttons to select "WPA-PSK" security type.

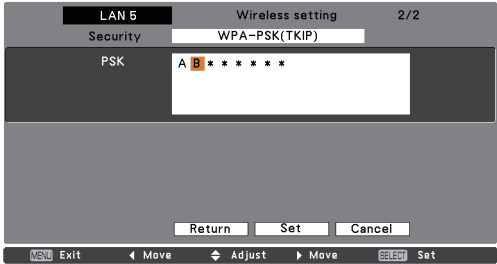
WPA-PSK(TKIP)
configuration screen



2. Use the Point ▲▼ buttons to select the key field and press **SELECT** button. The PSK key entry screen appears. Enter the PSK key by using the Point buttons. If the input PSK key has an error, the PSK key is indicated in red.
3. Use the Point ▲▼ buttons to select "Set" and press **SELECT** button to complete the network configuration, and return to the "Network setting" in the Network menu.

Available PSK key characters

ASCII code8 to 63 digits
Hex code64 digits



* Security "WPA-PSK" and "WPA2-PSK" modes are not available when the "AdHoc" network type is selected.

* When you set the PSK keys with 64 digits, the projector checks whether all of the entered PSK keys are in Hex code or not. If any of the ASCII code is included in the entered PSK keys, the entered PSK keys are indicated in red as error.

Easy wireless setting

With this setting, you do not need any complicated LAN setting procedures.

The network type will be AdHoc mode.

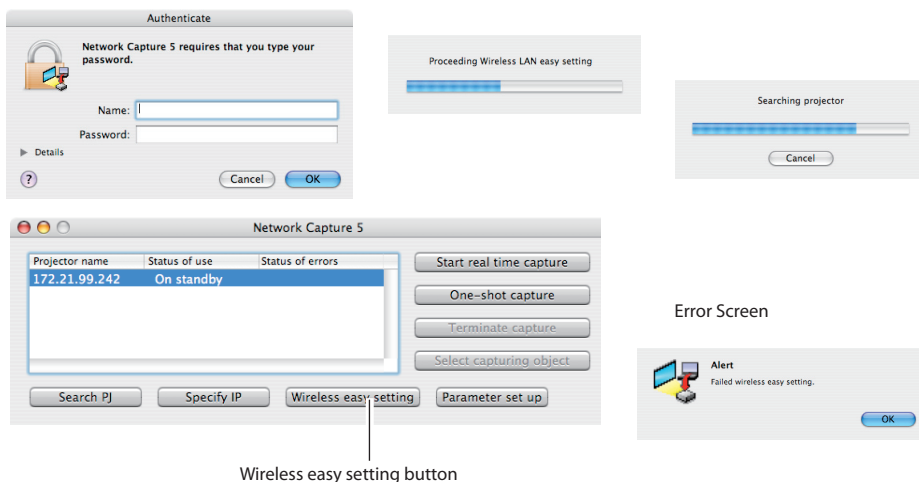
CAUTION: This function can be used only when logged in by Administrative right. The using network adaptor should be "AirMac".

Setting Procedures

1. Turn on the projector and select "Network" in the Input menu of the projector.
2. Select "LAN mode select" in the Network menu and press **SELECT** button.
3. Select "Wireless Simple" with the Point ▲▼ buttons. Press the Point button then the "Please wait..." message will appear and switching operation will start. Switching will take a while and after completing the operation the message "Ready for use" will appear. During the switching period, the projector cannot be operated. ("SIMPLE" LAN settings will be shown by pressing **SELECT** button. The settings cannot be changed.)
4. Activate "Network Capture 5" which is installed in the computer.
5. Authentication window will appear. Type your Name and Password and then click **OK** button. The Wireless LAN setting screen will appear and the computer will start to set up the Wireless LAN setting. (Adjust the computer's Wireless LAN environment to the "SIMPLE" setting LAN environment.) After completing the settings, the computer will start searching the projector which was set as "SIMPLE" and will display the name of the projector or the IP address on the projector list. Confirm whether the LAN has been set correctly and works properly. Refer to "4. Wired LAN configurations" → "Confirming the operation" (p.30) for the confirmation procedures. If the network setup is not succeeded, the error screen will appear.

You can also set the easy wireless setting by clicking the **Wireless easy setting** button.

Setting screen



* The projector should be set up previously to complete the easy wireless setting.

Computer environment and Wireless LAN connection;

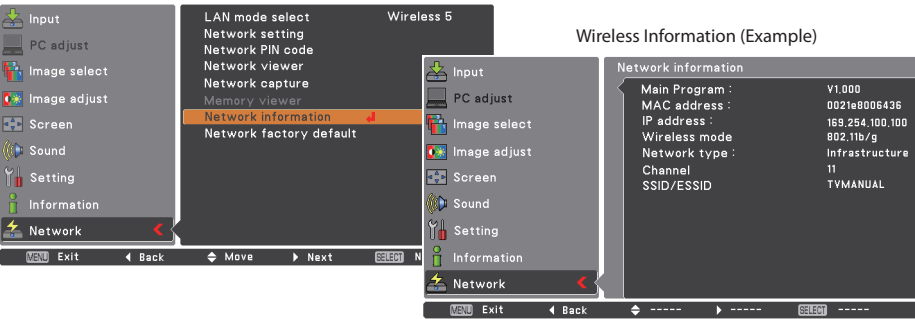
Wireless LAN with Wireless Easy setting connection will be made via AdHoc mode. For setting contents, refer to “Wireless LAN factory default settings” (p.46).
With the Easy setting, computer’s LAN environment setting will be switched to the setup environment. Because of that, the LAN cannot work for the other operation while using “Network Capture 5”.
After terminating the application or pressing the Wireless Easy Setting button, the LAN environment will automatically go back to the previous state.

Network PIN code

The Network PIN code is to restrict the access from the networks to the projector.
After setting the Network PIN code, you need to enter it to operate the projector via the networks.
Select “Network PIN code” from the projector menu and press **SELECT** button. Set with the same procedures as setting Wired LAN Network PIN code. Refer to “4. Wired LAN Configurations” → “Network PIN code” (p.32).

Network information

Display the current LAN connecting environment. Select “Network Information” from the projector menu and press **SELECT** button.



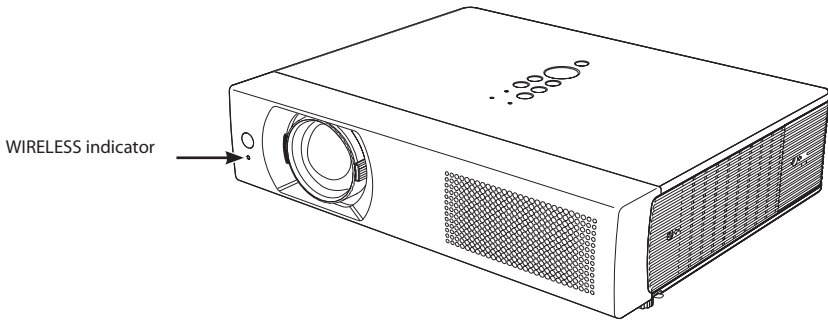
Wireless factory default

Select “Network factory default” in the Network menu (p.33) and press **SELECT** button. All the wireless LAN settings will go back to the factory default settings. For details, refer to “Wireless LAN factory default settings” (p.46).

WIRELESS indicator display

When the wireless LAN configuration is set up correctly and the wireless communication is established with the access-point or computer in the network, the WIRELESS indicator on the front panel lights up. When sending or receiving of data, it blinks.

Even though the wireless LAN in the network menu is selected, the WIRELESS indicator does not light, in this case, the wireless LAN configuration is not set up correctly, and please check the setting of the projector.



Wireless LAN factory default settings

Factory default settings for Wireless 4, Wireless 5, and Wireless Simple as follows.

Setting Items	Selected LAN		
	Wireless 4	Wireless 5	Wireless Simple
DHCP	OFF	ON	OFF
IP ADDRESS	169.254.100.100	192.168.100.100	169.254. * . *
SUBNETMASK	255.255.0.0	255.255.255.0	255.255.0.0
GATEWAY ADDRESS	255.255.255.255	255.255.255.255	255.255.255.255
DNS ADDRESS	255.255.255.255	255.255.255.255	255.255.255.255
WIRELESS CHANNEL	11	11	11
WIRELESS MODE	802.11b/g/n	802.11b/g/n	802.11b/g/n
NETWORK TYPE	AdHoc	INFRASTRUCTURE	AdHoc
WIRELESS SSID/ESSID (SSID/ESSID)	PJ-WIRELESS5	ANY	PJ-WIRELESS5
SECURITY (Encryption)	DISABLE	DISABLE	DISABLE

6. Basic setting and operation

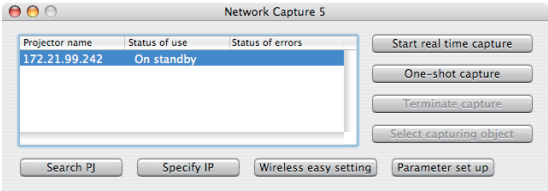
Describes basic operation and settings below by using the web browser.

- Initial setting
Setup the basic setting such as Projector name, Network PIN code, Time setting, etc.
- Network setting
Configure Wired/Wireless LAN environment.
- E-mail Setting
Configure E-mail function to manage the projector.
- SNMP Setting
Configure SNMP function to manage the projector.

Caution: When operating the projector with the browser, connect the projector to the computer with Wired or Wireless LAN. Complete the connection in advance.

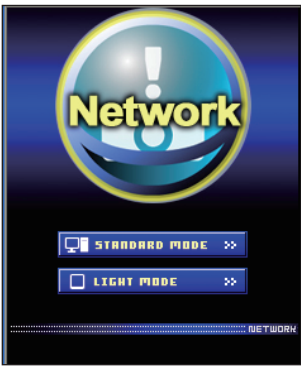
Starting up the Browser

1. Turn on the projector.
2. Start up the Network Capture 5. The Network Capture 5 searches projectors in the network and lists up the IP address or projector name of the projector on the Network Projector List.
3. Double click the projector to set from the Network Projector List.
4. The web browser will start up and display the setting page of the projector.



Select a display mode and login

This product provides 2 types of control mode, Standard Mode and Light Mode as below. Select a proper mode to match your PC and network environment by clicking on the text link. Once you select your desired display mode, the setting page you selected display mode will be displayed automatically from the next login. To change the display mode, click "Top" on lower-right corner of the setting page (p.49).



STANDARD MODE

For computer display, displays graphical menus and settings. This mode is recommended for standard use.

LIGHT MODE

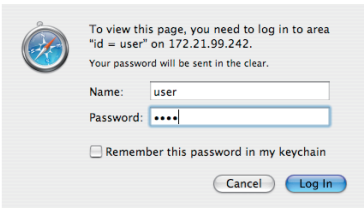
Displays with 200 x 300 dots. This mode is optimized for use of the handheld computer, PDA, etc. It is also convenient if the network traffic is heavy. (This mode has some limitations on the multi-control functions.)

If the password has been set on the setting page, the authentication window will appear. In that case, type "user" onto the **User Name** text area and the login Network PIN code onto the **Password** text area and then click **Log in** button.

* The entered User Name must be "user" and it can not be changed.

[Note]

When the projector is accessed for the first time or the Network PIN code "0000" is set, the auto-login is performed and the next main setting page is displayed.



Display of main setting page

The following main setting page will be displayed depending on your display mode selection. Perform various kinds of settings through this page. Click on the menus to display the control and setting pages.

1 Main setting page in the Standard Mode display

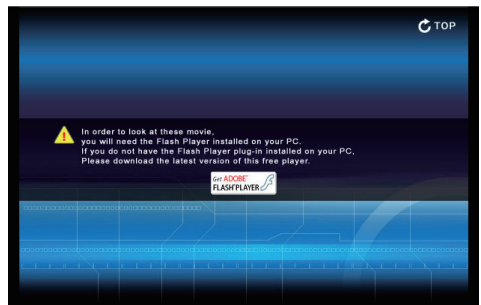
The screenshot shows the main setting page with a blue background and various menu icons. Callouts provide the following information:

- Clock display**: Display on or off by clicking text ON or OFF.
- Sub menu tab**: Switches the sub menu tab.
- Page numbers**: Switches the pages by clicking the number's tab.
- Main menu**: For selection of control and setting items of the projector.
- Setting page**: Displays the control and setting items according to the selected menu.
- Returns to Display Mode selection page (p.48)**: A button labeled 'TOP' in the bottom right corner.

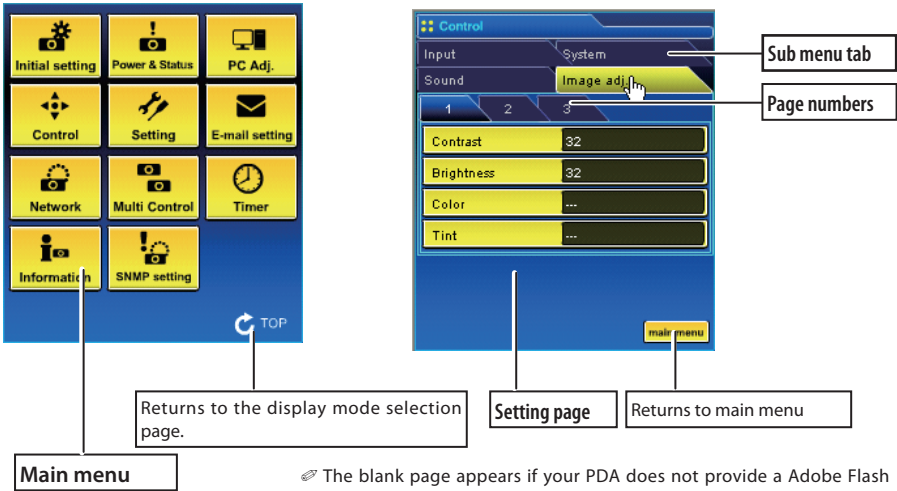
*To change the screen language, use the initial setting menu (p.52)

This Standard mode display is mainly used through this manual for the setting and control description.

If your computer does not have the Adobe Flash Player version 6 or later, follow the message on the control page to install the Adobe Flash Player. For further product information or installing, see the Adobe homepage.
<http://www.adobe.com>



2 Main setting page in the Light Mode display



The blank page appears if your PDA does not provide a Adobe Flash Player. You need to install the Adobe Flash Player. (p.49)

How to use the setting page

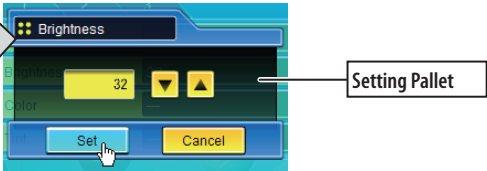
To control and set up the projector, use the setting menus on the web browser. The basic operation and procedures commonly used on this manual are described below.

Example of the Setting Page



The setting pallet appears after clicking the item. Change the value by clicking ▲ or ▼ button, or type the number onto the text box directly and then click Set button.

* Each item has a valid setting range respectively.



The value in the text box indicates current value.

Each item has a valid setting range. The setting value exceeding its range becomes invalid. Some control items can not be used depending on the selected input mode or functions of the projector you use. In that case, the values of those items are indicated with "---".

Type of the setting pallet

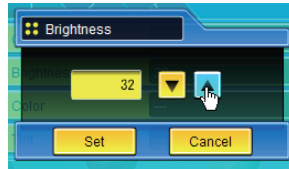
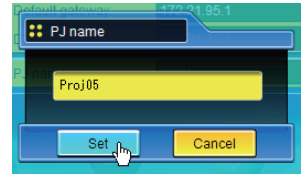
Text box setting

Enter the number or text and then click **Set** button.

or

Change a value with ▲ or ▼ button and then click **Set** button.

The value changes quickly when ▲ or ▼ button is kept pressing.

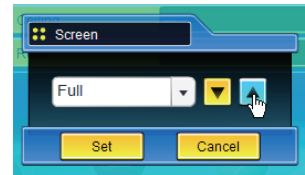
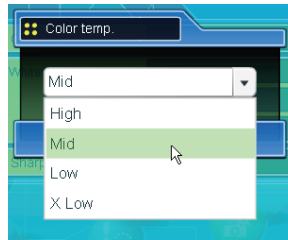


Pull-down menu setting

Select an item with pull-down menu button and then click **Set** button.

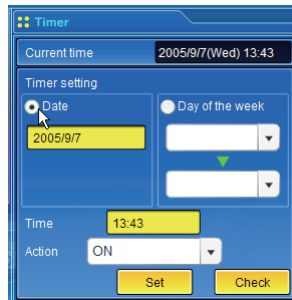
or

Select an item by clicking ▲ or ▼ button.



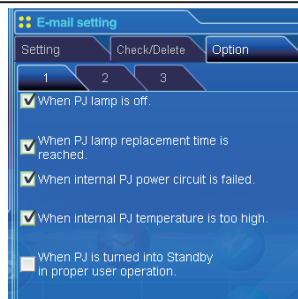
Radio button setting

Select an item by selecting a radio button



Check box setting

Select items by ticking on check boxes.





Initial setting

After installing the projector, perform the following basic initial setting.

Click **Initial Setting** on the main menu to display the initial setting page.



Item	Description
Language	Switches display language on the setting page. English or Japanese.
Model name	Indicates the model name of the projector.
Projector name.....	Sets the name of projector. This projector name is listed on the application window of the Network Capture software.
Network PIN code	Sets the Network PIN code to login the setting page (p.32, p.44)
PJLink	Switches PJLink password authentication on or off.
Password.....	Password for PJLink function

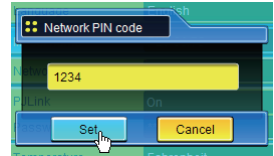
Network PIN code setting

This is to set the Network PIN code to restrict the access from an unauthorized person through the network.

Enter a 4-digit number as the Network PIN code onto the text box and click **Set** button.

The projector's network part begins restarting and it takes about 20 seconds. Close (Quit) the web browser and access to the login page again in 20 seconds. This is to perform the login authentication firmly.

The default Network PIN code as [0000], which means no Network PIN code is set.

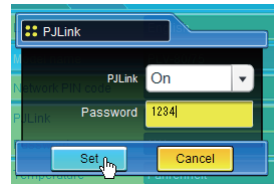


- ☞ When you connect the projector to the network, it is recommended to set a new Network PIN code. Only a four-digit number is valid for the Network PIN code.
- ☞ If you forget the Network PIN code to the projector, you can check it by selecting "Network PIN code" sub menu from "Network" menu on the projector. For further information, please see item "Network PIN code setting" (p.32, p.44).

PJLink and password setting

This is to set the PJLink password authentication on or off. If "On" is set with the PJLink pull-down menu, the password must be required. Enter a **password*** onto the text box and click **Set** button.

Refer to the projector owner's manual for further details of the PJLink function.



- ☞ 1 to 32 alphanumeric characters can be used for the password.

What's PJLink?

The projectors equipped with PJLink function can be used together on the same network, regardless of model or brand, for centralized control and monitoring. This standard was established by the Japan Business Machine and Information System Industries Association (JBMA). <http://pjlink.jbmia.or.jp/>



Item	Description
NTP address.....	Enter the address of NTP server. Please consult your network administrator for setting up of the NTP server.
Time zone.....	Sets your country or region's time zone
Temperature.....	Switches display temperature unit Centigrade or Fahrenheit
Time setting.....	When clicking AUTO button, the date and time set on your computer are set to the projector. The timer icon appears when time is set up correctly.
Current time.....	Indicates current date and time set on the projector
Date.....	Sets date in manual
Time.....	Sets time in manual

Date and time setting

NTP is abbreviated expressions of Network Time Protocol. It is a protocol to acquire the exact current time via the network. This projector acquires the current time from the NTP server and update the time in the network module. After setting the NTP address, the projector acquires the time per 24 hours. If the projector fails acquiring the time from the NTP server, the projector tries to acquire the time every 1 hour until it succeeds.

- ☞ "Time zone" is the local time as an offset from Greenwich Mean Time (GMT). "Time zone" is in \pm hour:minute format and is available from -23:59 to +23:59.
ex. Time zone: +09:00 in Tokyo, Japan
- ☞ Both of "NTP address" and "Time zone" should be set, otherwise the setting will be failed.

When the NTP address is not set, perform the time setting with "Auto-setting" or "manual setting" described below.

Auto setting

Click **AUTO** button on the page, the date and time set on your computer are set to the projector.

Note: Confirm that your computer has a correct clock time before performing the auto time setting.

Manual setting

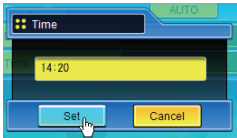
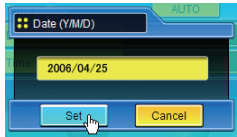
Click the item **Date** or **Time** and enter the date or time on the input box with adequate format.

Date is in year/month/day format.

ex. 2007/10/05

Time is in 24-hour:minute format.

ex. 18:30



This projector does not provide the built-in battery. The date and time information are lost when the projector turns off (when "Eco" is set for the stand-by mode (Refer to p.76)), or the network configuration is reset. The timer function is disable until time is set up correctly. When using the NTP address for time setting, the current time is acquired at the projector starting up and the timer function is activated after finishing the time setting correctly.



Network configuration

Click **Network** on the main menu. The following setting page is displayed. Set up the projector's network environment on this **Setting** sub menu.



Setting of LAN

1. Select a type of LAN from **Change setting** pull down menu.

- LAN1(Wired)
- LAN2(Wired)
- LAN3(Wired)
- LAN4(Wireless)
- LAN5(Wireless)
- Simple(Wireless)
- USB display^{*1}

For the default setting of the above LAN, see the items "Wired Factory Default Setting" or "Wireless Factory Default Setting".

Item	Description
Change setting.....	Selects LAN1 to LAN5 and Simple
DHCP.....	Sets DHCP configuration (ON/OFF)
IP address	Sets IP address of the projector
Subnet mask.....	Sets Subnet mask.
Default gateway ^{*2}	Sets IP address of the default gateway (Router)
DNS ^{*3}	Sets IP address of the DNS server.

^{*1} "USB display" is Windows-compliant, but non-Mac-compliant.

^{*2} Set [255.255.255.255] if the network does not provide the gateway (router).

^{*3} Set [255.255.255.255] if you do not use the function E-mail alert.

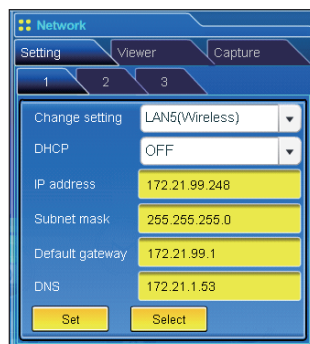
2. Select either "Manual" or "DHCP" from **IP configuration** pull down menu. When "DHCP" is selected, IP address, Subnet mask, Default Gateway, DNS are automatically configured by DHCP function. Only the DNS address allows you to set up manually if the DNS address information is not provided on your DHCP server. When selecting "Manual", configure all the items manually. For further information, contact your network administrator. The address must be entered as 4 number groups separated by a dot like [192.168.001.101].

3. After completing the network configuration, press **Set** button to register the network information. The Simple(Wireless) setting is fixed, which cannot be changed from factory default value.

4. To apply the setting, press Set button. The network of the projector starts re-booting and applies the setting. It takes about 20 seconds to complete. Close the web browser and access to the login page again in 20 seconds.

On the screen of the projector, the "Please wait..." message will appear and switching operation will start. Switching will take a while and after completing the operation, the "Ready for use" message will appear. During the switching period, the projector cannot be operated.

When you use LAN4(Wireless) or LAN5(Wireless), the setting items of page [2] and [3] are activated and you can setup Wireless LAN setting and Security setting. See the item "Configuring Wireless LAN Setting and Security Setting" for further setting.



☞ When the IP address collides with the address of other equipment, the computer cannot communicate with the projector. When the IP address collides with the address of other equipment, the computer cannot communicate with the projector. Set an IP address again after selecting another LAN mode from "Change setting" or turning off and then on the projector.

Configuring wireless LAN setting and security setting

Configure the wireless LAN setting and security setting for Wireless 4 and Wireless 5.

Configuring wireless LAN setting

1. Click page [2] of setting pages. Following wireless LAN setting can be done. After completing the configuration, press **Set** button.



Item	Description
Wireless Mode	Select the Communication standard 802.11b, 802.11b/g or 802.11b/g/n
Network Type.....	Select either "Infrastructure" or "AdHoc". When selecting the "AdHoc", the security "WPA-PSK" and "WPA2-PSK" mode are not available.
SSID/ESSID	Set the SSID/ESSID. (up to ASCII 32 characters) SSID/ESSID is case-sensitive. Even though all characters on the Wireless information is uppercase, it is necessary to distinguish between upper case and lower case characters.
Channel.....	If you use the projector in 802.11AdHoc mode, select the channel, from 1 to 11.

Notes for entering characters:

The "¥" symbol is displayed as "\" when the ASCII key is used. The "*" symbol is treated as a character by the ASCII key, but it is not interpreted as a character by the HEX key. In HEX, the "*" symbol is displayed in red and setting is denied.

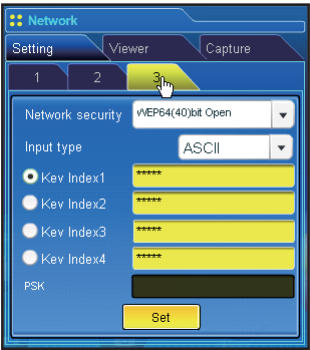
You can not set all the characters with the "*" symbol. It will be considered as no operation.

ASCII key characters : Space - 0 to 9 A to Z a to z ! " # \$ % & ' () * + , . / : ; < = > ? @ [¥] ^ _ ` { | } ~

HEX key characters : 0 to 9 a to f

Configuring wireless LAN security setting

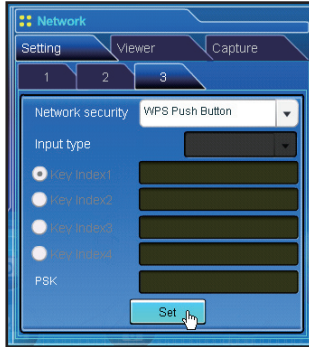
Click page [3] of setting pages. Following wireless LAN security setting can be done. After completing the configuration, press Set button.



Item	Description										
Network security ...	Sets the type of encryption. Following types are available. <div>Disable</div> <div>WPS Push Button</div> <div>WPS PIN code</div> <div>WEP64(40)bit Open</div> <div>WEP64(40)bit Share</div> <div>WEP128(104)bit Open</div> <div>WEP128(104)bit Share</div> <div>WPA-PSK(TKIP)</div> <div>WPA2-PSK(AES)</div>										
Input type.....	ASCII or HEX. See item "Notes for entering characters"										
Key index1 - 4.....	Enter keys of encryption. <div>The used number of character changes as the table below according to the type of WEP encryption and input type.</div> <table><tr><th>WEP option</th><th>Characters</th></tr><tr><td>WEP64(40)bit ASCII</td><td>5 characters</td></tr><tr><td>WEP64(40)bit HEX</td><td>10 characters</td></tr><tr><td>WEP128(104)bit ASCII</td><td>13 characters</td></tr><tr><td>WEP128(104)bit HEX</td><td>26 characters</td></tr></table> <div>Four key indexes can be set, however, the only one with check on its radio button is effective. Both of the number and value of the key index in effect must be same as those of your computer and the access point.</div> <div>Depending on computers and access points, you may be allowed to select only one WEP key. In that case, use key index1.</div>	WEP option	Characters	WEP64(40)bit ASCII	5 characters	WEP64(40)bit HEX	10 characters	WEP128(104)bit ASCII	13 characters	WEP128(104)bit HEX	26 characters
WEP option	Characters										
WEP64(40)bit ASCII	5 characters										
WEP64(40)bit HEX	10 characters										
WEP128(104)bit ASCII	13 characters										
WEP128(104)bit HEX	26 characters										
PSK.....	Available when the "WPA-PSK(TKIP)" or "WPA2-PSK(AES)" is selected. <div>The PSK key must be no fewer than 8, nor more than 63 digits with ASCII code, and 64 digits with Hex code.</div>										

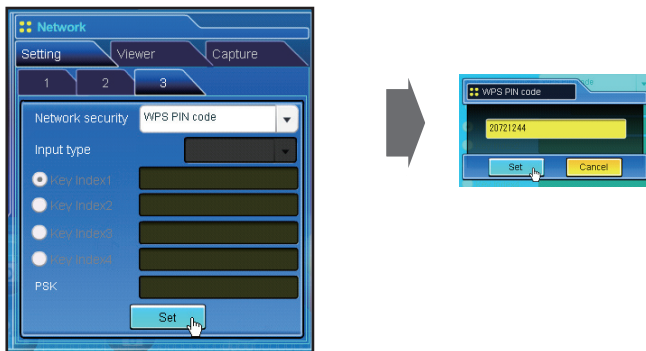
Setting of WPS Push button

1. Select "WPS Push Button" in the "Network security" and press **Set** button to start WPS configuration.
2. Configure WPS of the access point within 2 minutes. After configuration of the access point, the network between the access point and the projector will be performed automatically.
3. The network setting will be updated after finishing configuration. Re-connect to the projector by entering the new IP address on the browser.



Setting of WPS PIN code

1. Select "WPS PIN code" in the "Network security" and press **Set** button.
2. The eight-digit number in "WPS PIN code" window will appear, and set up this WPS PIN code of your wireless access point according to the instructions manual of the access point.
3. After setting up the access point, press **Set** button on this "WPS PIN code" window within 2 minutes. After configuration of the projector, the network between the access point and the projector will be performed automatically.
4. The network setting will be updated after finishing configuration. Re-connect to the projector by entering the new IP address on the browser.

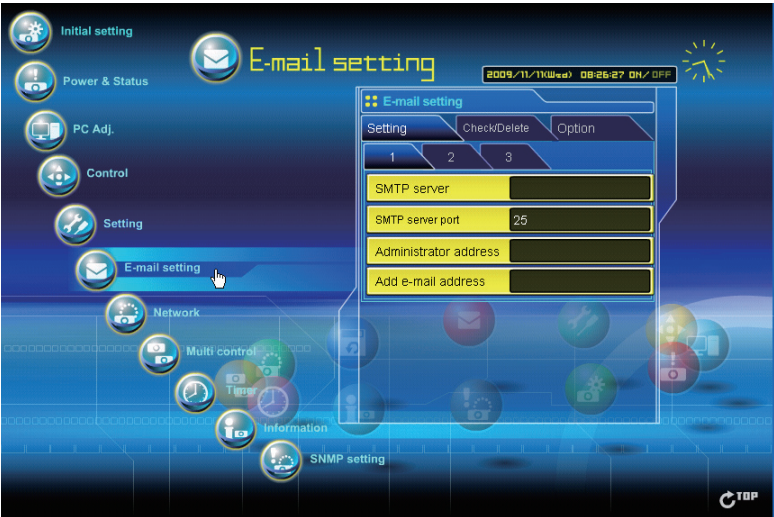


☞ When there is plural access points, WPS PIN code sets the connection vis-a-vis the access point whose the radio wave strength is strongest. So, when setting WPS PIN code, please set the projector in the vicinity of the access point which you want to connect. If the setting with WPS PIN code is not succeeded, please try the setting with WPS Push button.



E-mail setting

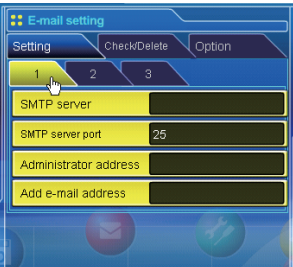
This product has an E-mail function which can send an alert message to users or an administrator if it detects an abnormality on the projector or run out of the life span of the lamp. Click **E-mail Setting** on the main menu and follow the below steps.



1 Setting SMTP server and administrator address

Set the server name or IP address of the SMTP server*¹ and administrator address. The administrator address is set to "Reply-To" address of the message sent from the projector.

*¹ The SMTP server is a server for sending E-mail. Please contact your network administrator to have this SMTP server address. When the server name for SMTP server is used, DNS must be set up to activate the E-mail function.

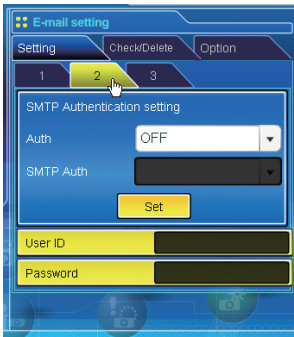


Item	Description
SMTP server* ¹	Sets server name or IP address of the SMTP server. (up to 60 characters)
SMTP server port	Sets the SMTP server port. (from 1 to 65535)
Administrator address	Sets E-mail address of administrator. (up to 95 characters)
Add e-mail address	Sets E-mail address of the user to send a mail when the projector has an abnormality. (up to 95 characters)

- ☞ If the projector sends an alert message due to the abnormality on the projector but the SMTP server is down in some other reason, the message will not be sent. In that case, the message "Unable to connect to server." will be displayed on the setting page. To clear this message, set up SMTP server address again.
- ☞ To use the E-mail function, it must be set the DNS address on the Network setting page correctly.
- ☞ You cannot use this E-mail function if the DNS server and SMTP server cannot be used in your network environment.
- ☞ The projector does not send message to the address set in "Administrator address" text box. If you want to send e-mails to the administrator address, enter the administrator address into "Add e-mail address" text box.

2 Setting SMTP authentication

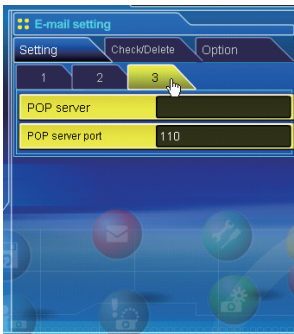
Set the SMTP authentication concerned. Please contact your network administrator in details.



Item	Description
SMTP authentication setting	
Auth	Sets authentication setting option. (OFF, SMTP Auth, POP before SMTP)
SMTP Auth	Sets user authentication setting option when selecting "SMTP Auth" in above column. (CRAM-MD5, LOGIN, PLAIN)
After completing the settings, press Set button.	
User ID	Enter SMTP user ID. (up to 63 characters)
Password	Enter SMTP password. (up to 63 characters)

3 Registering POP server

When using POP server to receive E-mail, set the POP server concerned. Please contact your network administrator in details.

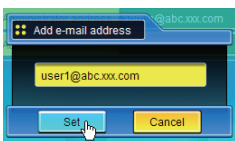


Item	Description
POP server	Enter POP server name or IP address. (up to 60 characters)
POP server port	Enter Port number of POP server. (from 1 to 65535)

4 Registering and deleting E-mail addresses

Click "Add E-mail address" and type the E-mail address onto the text box and click **Set** button. To check the registered addresses, click **Check/Delete** sub menu tab. The addresses are listed as the figure on the right.

✎ Up to 10 E-mail addresses can be registered.



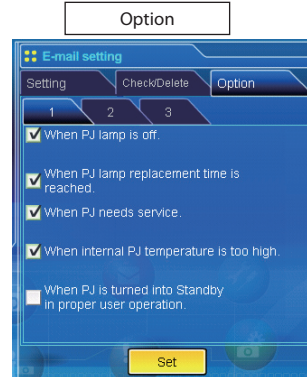
To delete the registered addresses, check the address you want to delete and click **Delete** button.



5 Option selection for sending alert mail

Click **Option** sub menu tab. Check the condition items under which alert mail will be sent and click **Set** button.

Please refer to the item "Examples :Type and contents of alert mail" described as below.



[1]-----

- ☐ When PJ lamp is off.
- ☐ When PJ lamp replacement time is reached.
- ☐ When PJ needs service.
- ☐ When internal PJ temperature is too high.
- ☐ When PJ is turned into Standby in proper user operation.

[2]-----

- ☐ When accumulated filter use time reaches [] hours.
- ☐ When Power management function turns PJ lamp off.
- ☐ When the signal is interrupted.
- ☐ When Auto Play is failed.

[3]-----

- ☐ When lamp Corres. Value reaches [] hours.
- Attached message

- ☞ "When PJ lamp is off" signifies the lamp goes out without user operation. "When PJ is turned into Standby in proper user operation" signifies that the projector is turned on by using the web browser and then it is turned into standby with ON/STANDBY button on the top control or the remote control.
- ☞ The length of message should be less than 255 characters.
- ☞ Up to 99,999 hours can be set for use time.
- ☞ The optional settings return to the factory default when you unplug the AC power cord of the projector.

Examples: Type and contents of alert mail

When the projector has an abnormality, the following alert messages are sent to the registered E-mail address depending on your selected condition. Administrator or user can take an efficient action quickly by receiving this message. This is very useful to maintain and service the projector.

The following are examples of received messages.

● When PJ lamp replacement time is reached:

TITLE: Message from projector
 10-03-2007 00:59
 Projector Model Name: *model name*
 TCP/IP: 192.168.1.201 Projector Name: Proj05

It sends you following message.

*The PJ lamp replace time is reached.

- ☞ Replace it with a new lamp immediately and reset the lamp counter. If the projector is used without resetting the lamp counter, the alert mail is sent to users in every power-on of the projector. This alert mail will not be sent when the mail sending condition "When the life span of lamp is reached" is unchecked.

● When PJ needs service::

TITLE: Message from projector
 10-03-2007 00:59
 Projector Model Name: *model name*
 TCP/IP: 192.168.1.201 Projector Name: Proj05

It sends you following message.

* Maintenance requirement from Projector is detected.
 Check up LED status of projector and consult with the dealer.

MAIN,	P-FAIL	OK	} Error information
MAIN,	1.8V	OK	
MCI,	P-FAIL	NG	

☞ Maintenance requirement from Projector is detected. Unplug the AC power cord and plug it again, and then turn on the projector to verify the operation. If the problem still persists, unplug the AC power cord and ask servicing to a qualified service personnel.

● When internal PJ temperature is too high:

TITLE: Message from projector
 10-03-2007 00:59
 Projector Model Name: *model name*
 TCP/IP: 192.168.1.201 Projector Name: Proj05

It sends you following message.

*The Projector lamp is turned off, because internal Projector temperature is too high.
 Wait for the completion of the cooling process and make sure the projector has been turned into Standby. Then turn the projector on again.
 If the Indicator continues flashing, check the air filter for dust accumulation.

[A] 81.5 degrees fahrenheit [B] 134 degrees fahrenheit [C] 95.6 degrees fahrenheit
 Temperature of Sensor B is too high.

☞ The projector let users know the information which thermal sensors inside the projector detected the abnormal temperature risen and so the projector was turned off. Please refer to item "Power control and status check" (☞ p.68) for the location of the sensors and each temperature . Also see the owner's manual of the projector for further details.

● When lamp corres. value reaches preselect use time:

TITLE: Message from projector
 10-03-2007 00:59
 Projector Model Name: *model name*
 TCP/IP: 192.168.1.201 Projector Name: Proj05

It sends you following message.

*The accumulated lamp use time reaches 1800 hours.
 Prepare for the lamp replacement.

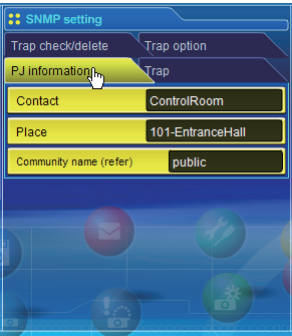
Discretionary messages

☞ The projector sends a free message when the lamp use time (Corresponding value) reaches the preselected lamp use time. It can be used for preparation of the lamp replacement and the maintenance required.



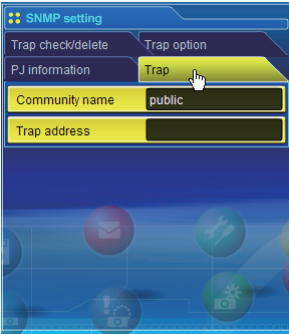
SNMP setting

This product provides a SNMP (Simple Network Management Protocol) agent function. The SNMP consists of a manager and agents. The group which exchanges information with SNMP is called "Community". There are two access modes in a community, Refer (read only) and Set (read- write). This product allows to use Refer (read only) only. The SNMP message informs the projector status called "Trap" to an administrator. Click **SNMP Setting** on the main menu and set up each item.



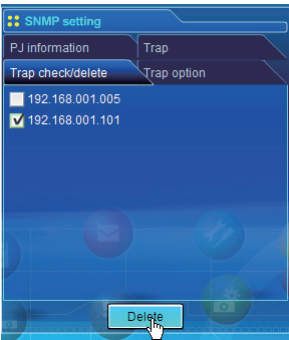
PJ information	
Item	Description
Contact	Enter user name of the projector etc. (optional)
Place	Enter place of the projector (optional)
Community name(refer)	Enter community name (read only). Default name is "public".

☞ The SNMP agent provided with this product is based upon MIB-2 defined by RFC1213. For private MIB information, refer to file "Mibinfo/XUPjNet.mib" in the CD-ROM.



Trap

Item	Description
Community name	Enter community name to send "Trap". Default name is "public".
Trap address	Enter IP address of the SNMP manager computer to receive "Trap". Up to 10 addresses can be registered. <div> <input type="text"/> Up to 10 trap addresses can be registered. </div>

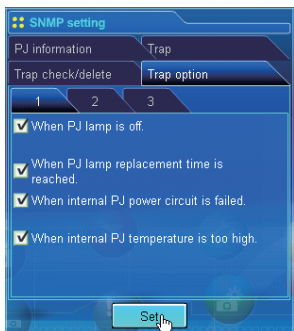


Trap check/delete

Check and delete the trap address

Checking the registered trap address and deleting the address.

To delete the address, tick the check box in front of the IP address and click **Delete** button.



Trap option

Trap option setting

Tick the check boxes in front of the condition item to send the trap.
 Click **Set** button if you tick or un-tick the check box on a page.

[1]-----

- ☐ When PJ lamp is off.
- ☐ When PJ lamp replacement time is reached.
- ☐ When PJ needs service.
- ☐ When internal PJ temperature is too high.

[2]-----

- ☐ When PJ is turned into Standby in proper user operation.
- ☐ When accumulated filter use time reaches [] hours.
- ☐ When Power management function turns PJ lamp off.

[3]-----

- ☐ When the signal is interrupted.
- ☐ When Auto Play is failed.
- ☐ When lamp Corres. Value reaches [] hours.

☞ "When PJ lamp is off" signifies the lamp goes out without user operation. "When PJ is turned into Standby in proper user operation" signifies that the projector is turned on by using the web browser and then it is turned into standby with ON/STANDBY button on the top control or the remote control.

☞ Up to 99,999 hours can be set for the time setting.

7. Controlling the projector

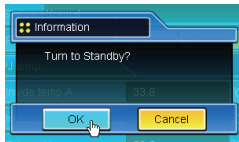
Describes controlling and setting of the projector by using the web browser.



Power control and status check

Click **Power & Status** on the main menu. The control page will be displayed.

By clicking **ON** or **Standby** button on the page, the power of the projector can be controlled.




Popup confirmation window


Item	Description
------	-------------

PJ status

- PowerDisplays the status of the lamp. (ON, OFF, On starting up, On cooling down)
- StatusDisplays the status of the projector's power. (Refer to next page.)
- Power control.....Controls the projector power by clicking the "ON" or "Standby" button.

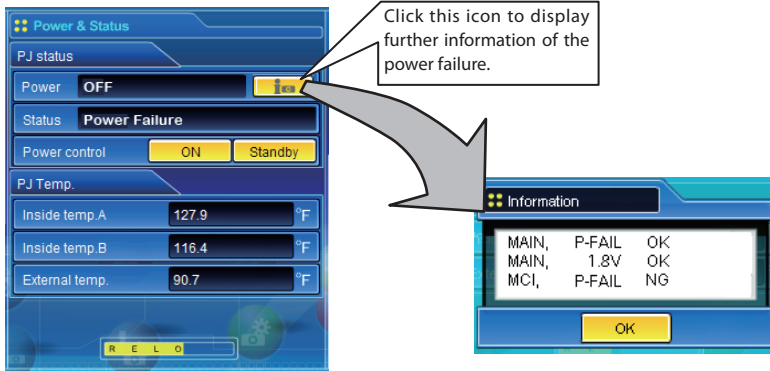
PJ temp.

- Inside temp.ADisplays the surrounding temperature of lamp in the projector.
 - Inside temp.BDisplays the surrounding temperature of panel in the projector.
 - External temp.Displays the surrounding temperature of the intake vent.
- The warning icon will appear if the temperature exceeds a specified value. Check if there is no object to obstruct the airflow around the intake or exhaust vent. It might be airfilter clogged. Clean up the airfilter.
- * The temperature unit can be set either Centigrade or Fahrenheit in the item "Initial Setting". (p.54)

-  The projector cannot be turned on while the projector is cooling down.
-  The web browser checks and updates the projector's condition every 30 seconds automatically.

About projector condition

Status	Description
Normal.....	Projector is operating normally.
Power management in operation.....	Power management is operating
Lamp failure.....	Lamp failure is occurring
Abnormal Temperature.....	The temperature of the projector became too high
Cooling down after abnormal Temp.	Projector detects abnormal temp. and is cooling down itself.
Standby after Abnormal Temp.	Projector detects abnormal temp. and is set into standby mode.
Power failure	Power failure has occurred inside the projector. Projector is turned off. Unplug the AC cord and contact a qualified service personnel for service. If the power failure occurs on the projector, "Power failure" is indicated on the status column and the information icon appears on the power column as shown below. Click this icon to display further information of the power failure.



When a security (PIN code lock) has been set on the projector, you also cannot control it through the network. To control the projector through the network, unlock the security on the projector using with the projector's menu control.

Caution about turning on/off the projector via the networks

When turning on/off the projector via the networks, preset the projector as follows:

1. Select "Setting" from the Projector menu.
2. Select "Standby mode" from the Setting menu and set it as "Network".

If you set this function as "Network", the network part of the projector is constantly provided with power even if the projector is turned off. If you set this as Eco, then the network part will be turned off when you turn off the projector. Consequently, you cannot turn on/off the projector via the networks.



Controls

Click **Control** on the main menu. The setting method differs depending on the contents of the page. Click on the page number to change pages and select desired setting items.

☞ Please see the owner's manual of the projector to have the further information of each control item.



Input

This function is to select the input mode and source mode of the projector. Click **Set** button after selecting the input and source mode.



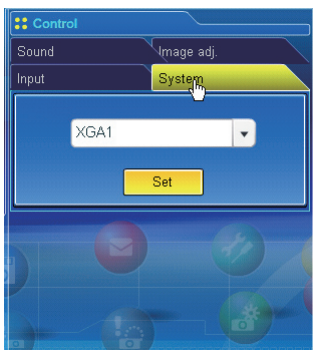
Item	Description
Input.....	Selects input mode of the projector.
Source.....	Selects signal source of the input.
Computer1 :	RGB Component RGB(Scart)
Computer2 :	RGB(PC analog) RGB(PC digital) RGB(AV HDCP)
Video :	Video
S-video :	S-video
Network :	Network

☞ The control page displays valid control items depending on the selected input mode, signal or functions of the projector you use, therefore, there may be different controls between the described items and actual control items on the page display. For further information , refer to the projector's owner's manual.

☞ When the projector is standby, only the timer on the setting menu is available; others are not available.

System

This function is to select the system of signal input to the projector. The available system modes are listed on the pull-down menu button according to the input signal. Select a system and then click **Set** button.



Available selection at the RGB(PC analog) input

Item	Description
XGA1	It automatically switches to the proper computer system of the input signal. * The computer system modes (VGA, SVGA, XGA, SXGA, UXGA, WXGA...) which meet the input signal listed.

Available selection at the RGB(PC digital) input

Item	Description
D-XGA	It automatically switches to the proper computer system of the input signal. * The computer system modes (D-VGA, D-SVGA, D-XGA, D-SXGA1...) which meet the input signal listed.

Available selection at the Video/S-video/Scart input

Item	Description
AUTO	It automatically switches to the proper color system of the input signal. * The selectable color systems are PAL, SECAM, NTSC, NTSC4.43, PAL-M and PAL-N. * AUTO is fixed at the Scart input.

Available selection at the RGB(AV HDCP) input

Item	Description
D-480p	It automatically switches to the proper scanning system of the input signal. * The selectable scanning systems are D-480p, D-575p, D-720p, D-1035i and D-1080i.

Available selection at the Component input

Item	Description
AUTO	It automatically switches to the proper scanning system of the input signal. * The selectable scanning systems are 480i, 575i, 480p, 575p, 720p, 1035i and 1080i.

☞ If the modes (Mode1 to Mode5) stored in the item "PC Adjustment" (p.74) are available, they are also listed together with the above mode.

Image adjustment

This function is to adjust the projected picture image and save the image mode. To store the adjusted value, click **Store** button, and to load the adjusted value, click **Load** button.



Item	Description
Contrast.....	Adjusts picture contrast
Brightness	Adjusts picture brightness
Color	Adjusts picture color saturation
Tint	Adjusts picture hue

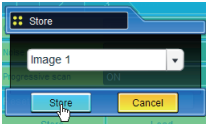


Item	Description
Color temp.	Sets a color temperature mode.
White balance	
Red, Green,	
Blue	Adjusts each white balance respectively.
Sharpness.....	Adjusts picture sharpness.

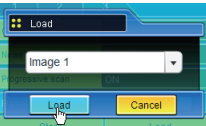
* When the value of the white balance is changed, the color temp. indicates "User".



Item	Description
Gamma.....	Adjusts brightness of darker part of the picture.
Noise reduction	Switches noise reduction mode
Progressive.....	Switches progressive mode
Reset.....	Resets the Image adjustment to previous levels.
Store	Stores the Image adjustment values. Select an item [Image 1 - Image 4] from the pull-down menu and click Store button.



Load.....	Loads the Image mode. Select an image mode from the pull-down menu and click Load button. There may not be available mode depending on the input mode as shown in the table left.
-----------	---

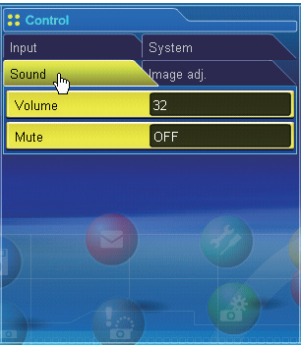


Input source		
Image mode	Video	Computer
Dynamic	✓	✓
Standard	✓	✓
Real	*	✓
Cinema	✓	*
Blackboard(Green)	✓	✓
Colorboard	✓	✓
Image 1 - 4	✓	✓

☞ The mark "✓" indicates the available image mode in the selected input source. The error message appears when the disabled image mode indicated with "*" is selected.

Sound

This function is to adjust the sound of the projector. The values in the text box represent the current control value or status.

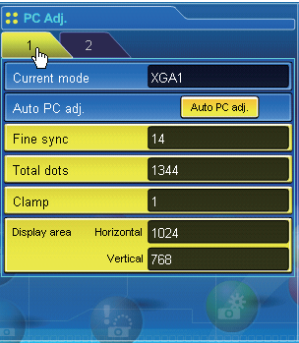


Item	Description
Volume	Adjusts the sound volume from the speakers.
Mute	Suppresses the sound.



PC adjustment

Click PC Adj. on the main menu. This function is to adjust the signal from the computer connected to the projector to obtain the proper picture image on the screen.



Item	Description
Current mode.....	Displays a current mode like VGA, SVGA, XGA, SXGA, UXGA, WXGA, etc. or MODE1 - MODE5 are the customized mode created by using the "Mode Store" function described below.
Auto PC adj.	Performs automatic adjustment.
Fine sync.....	Performs Fine Sync adjustment.
Total dots.....	Adjust the number of total dots in the horizontal period.
Clamp.....	Adjusts the phase of the clamp.
Display area	
Horizontal.....	Adjusts the image area horizontally.
Vertical	Adjusts the image area vertically.

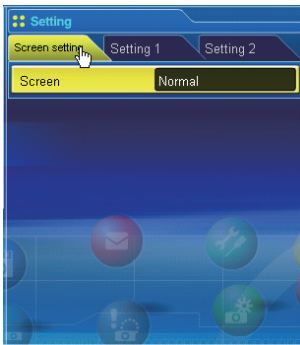


Item	Description
Position	
Horizontal	Adjusts the horizontal position of the screen.
Vertical	Adjusts the vertical position of the screen.
Reset.....	Resets the PC adjustments to the previous levels.
Mode Store	Stores the PC adjustment values. Select a mode no. [Mode1 - Mode5] from the pull-down menu.
Mode Free	Clear the PC adjustment values. Select a mode no. [Mode1 - Mode5] from the pull-down menu.



Setting up the projector

Click **Setting** on the main menu. This function is to set up the projector. Select the sub menu [Screen setting], [Setting 1] or , [Setting 2] and then set up each setting.



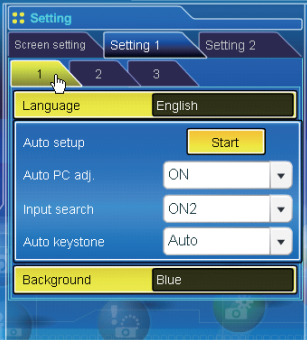
Item

Description

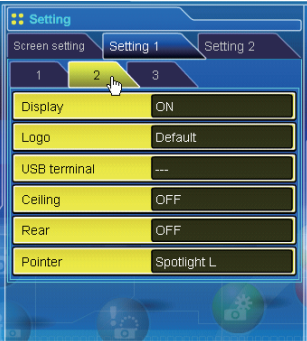
Screen.....Switches the screen mode. There may not be available mode depending on the input mode as shown in the table below.

Input source		
Screen mode	Video	Computer
Normal	✓	✓
True	*	✓
Wide	✓	*
Full	✓	✓
Custom	✓	✓

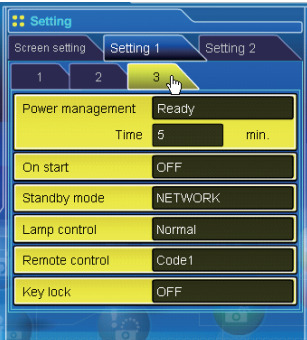
☞ The mark "✓" indicates the available screen mode in the selected input source system. The error message appears when the disabled screen mode indicated with "*" is selected.



Item	Description
Language	Sets the language display of projector's on-screen display menu.
Auto setup	Executes the Auto PC Adj, and Input Search function below according to the each setting after clicking Start button. Auto PC adj.....Sets Auto PC Adjustment mode. Input searchSets the auto-input signal detection mode. Auto keystone ...Sets Auto Keystone mode.
Background	Sets the screen background when no signal input.



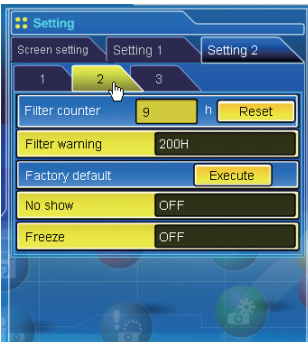
Item	Description
Display	Switches on or off the on-screen menu display on the screen. Countdown off Displays image during the starting up.
Logo	Sets the logo display on the screen during the startup.
USB terminal.....	Selects the usage of the USB terminal from "Display/ Mouse control".
Ceiling.....	Sets the image top/bottom and left/right reversed.
Rear.....	Sets the image left/right reversed.
Pointer	Sets the pointer form.



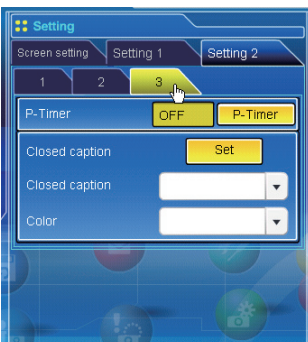
Item	Description
Power management	Sets into the selected power management mode if the input signal is interrupted and no control key is pressed for the specified period of time. *The specified time can be set 1 to 30 min.
On start	Sets the power-on mode when the AC cord is connected to the outlet.
Standby mode	Sets the network function enable or disable in the standby mode. Network ..Enable EcoDisable
Lamp control.....	Selects the lamp control mode.
Remote control	Sets the remote control code.
Key lock	Sets the prohibition of controls either Projector or Remote control.



Item	Description
Fan	Sets the cooling options after turning off. L1 Normal cooling L2 Silent cooling
Fan control.....	Sets the fan control speed. Off Normal mode On1 Highland mode 1 On2 Highland mode 2 On3 Highland mode 3
Lamp Corres. value ...	Displays the use time (Corresponding value) of the lamp and reset the counter.



Item	Description
Filter counter.....	Displays the filter use time. Reset the time after filter clean-up.
Filter warning.....	Sets the time to indicate the filter warning message on the screen.
Factory default.....	Sets all of the projector control items to the factory default setting except the following items. Lamp Corres. Value, PJ time, Filter time, PIN code lock and Logo PIN code lock.
No show	Sets the black out image temporarily.
Freeze.....	Sets the image to freeze mode.



Item	Description
Factory default.....	Sets all of the projector control items to the factory default setting except the following items. Lamp Corres. Value, PJ time, Filter time, PIN code lock and Logo PIN code lock.
P-Timer	Switches the P-Timer display. ON..... Starts P-Timer indication STOP Stops P-Timer counting OFF Stops P-Timer indication
Closed caption.....	Sets the closed caption function. Closed caption...Sets the closed caption mode. (OFF/CC1/CC2/CC3/CC4)
Color.....	Sets the color of the contents. (Color/White)



Timer setting

This page is to set the timer to turn the projector off or on at a programmed day/date and time. Follow the steps below for setting.

Click **Timer** on the main menu.

"---" will appear on the current time when the time is not set up correctly.

Present time set on the projector



How to set the timer

1 Set a day or date

To set the timer event at the same time everyday or every week, select **day** entry with radio button and then select desired day from the pull-down menu button. The selectable days are as follows:

- Same time everyday
- Every week (days from Monday to Sunday)

To set the timer event on specified date, select **date** entry with radio button and then type the date with (Year/Month/Date) format.

Ex.: Type [2007/12/20] if you specify [December 20, 2007].

This projector does not provide the built-in battery. The date and time information are lost when the projector turns off (when "Eco" is set for the stand-by mode (Refer to p.76)), or the network configuration is reset. The timer function is disabled until time is set up correctly. When using the NTP address for time setting, the current time is acquired at the projector starting up and the timer function is activated after finishing the time setting correctly.

2 Set an execute time

Type the time with (Hour:Minute) and 24 hours format.

Ex.: Type [18:25] if you specify [PM 6 o'clock and 25 minutes].

3 Select an event action

Select an event action from the pull-down menu.

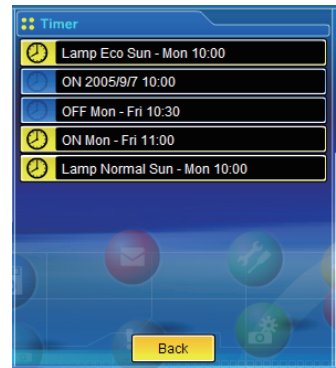
Event	Action
ON	Turns on the projector
OFF	Turns off the projector
Lamp High	Changes lamp mode to "High"
Lamp Normal	Changes lamp mode to "Normal"
Lamp Eco	Changes lamp mode to "Eco"

4 Register an event

Click **Set** button to register the set timer event. Repeat steps 1 to 4 for another timer event setting.

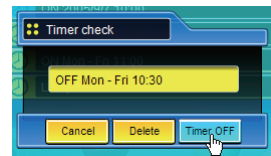
Check the timer events

To check the set timer events, click **Check** button. The timer events are listed. The event with blue background color represents the timer-OFF event.



Change the event mode

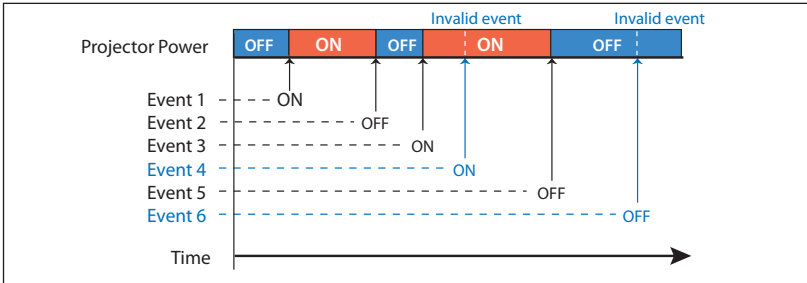
On the event list appearing by clicking **Check** button, click on the event you want to delete, disable or enable. Click **Cancel**, **Delete**, **Timer ON** or **Timer OFF** button on the popup pallet.



Button	Operation
Cancel	Cancels the setting
Delete	Deletes the timer event
Timer OFF	Disable the timer event temporarily
Timer ON.....	Enable the timer event

Notes on timer setting

Up to 10 timer events can be registered. Timer events always operate according to the next valid event depending on the projector's power status. In the example below, event 3 turns on the projector so next event 4 (also turning on projector) will not be effective because the projector is already turned on. Similarly, when the projector is turned off by event 5, event 6 OFF will not be effective in turning it off again. But these secondary events (event 4 and event 6) will become effective if a person turns off the projector (after event 3 and before event 4) or turns on the projector (after event 5 and before event 6).

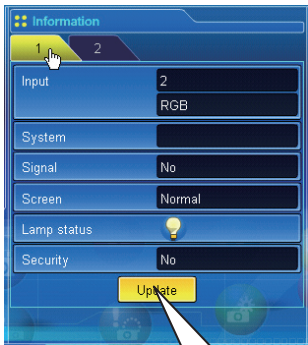


- When the timer events are set at the same time, the last event set will override the previous events. For example, if there is an event like "ON at 8:00 everyday" and then new event is set like "OFF at 8:00 everyday", only the last setting event is effective.
- When the timer event **ON** occurs during cooling down period, this is invalid event because the projector cannot be turned on during that cooling down period.



Projector information







This page is to display the basic information of the projector status. Click **Information** on the main menu.

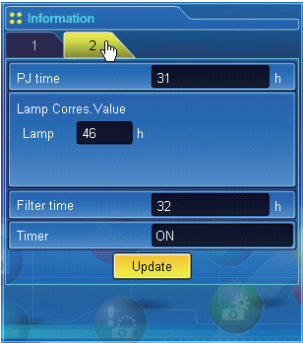


Click this button to update the information

Items	Description
Input.....	Displays selected input and source.
System	Displays selected signal system.
Signal	Input signal status
Screen	Displays screen mode.
Lamp status	Displays lamp status with an animation. Refer to the table on the next page.
Security	Displays the security (PIN code lock) status

Indication of the lamp status

Icon display/background	Status
 White-Yellow/Blue	Lamp on (Normal)
 White-Yellow/Red	Lamp on (Lamp is being used over a specified use time, replace lamp immediately)
 Gray/Blue	Lamp off (Normal)
 Gray/Red	Lamp off (Lamp is being used over a specified use time, replace lamp immediately)
 Red/Blue with X	Lamp failure (Lamp failure, check the lamp condition)
 Red/Red with X	Lamp failure (Lamp failure and lamp is being used over a specified use time, replace the lamp immediately)



Items	Description
PJ time	Displays the accumulated use time of the projector.
Lamp Corres. Value	Displays the use time (Corresponding value) of the lamp.
Filter time	Displays the use time of the filter.
Timer	Displays the timer setting status.
ON	Timer has been set.
OFF	No timer setting.



Multi-control

Controlling and setting the multi-projectors

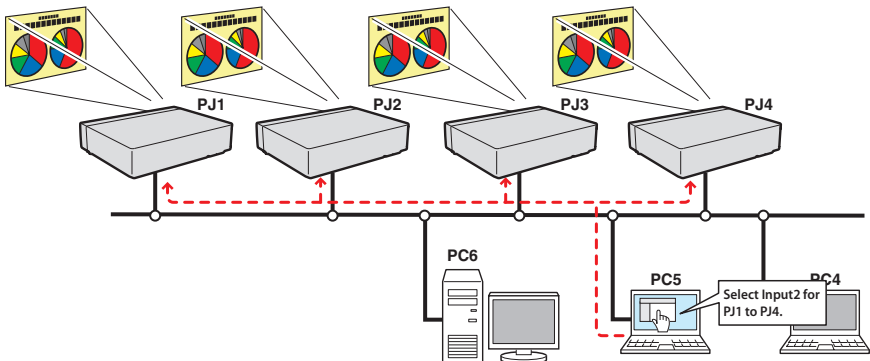
When you install multiple projectors in the network, you can control and set up them together. Click **Multi Control** on the main menu to display the control page.

Note:

To control the multiple projectors, each projector must be set the same Network PIN code.



Example of multi control

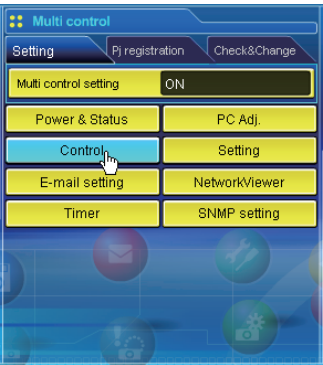
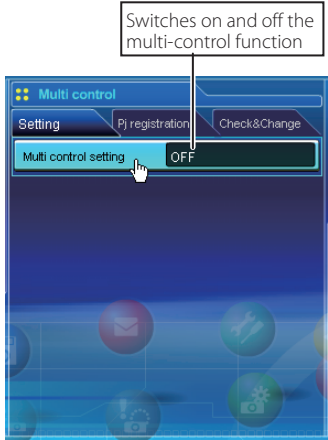
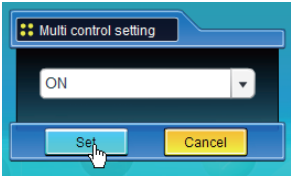


Start/stop the multi control

To start or stop controlling the multi-projectors, click Multi control setting menu and select ON or OFF.

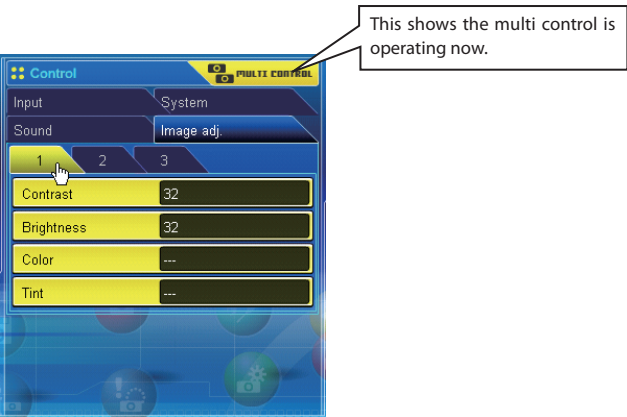
Multi control setting

- OFFStops multi control function
- ONStarts multi control function. The multi control menu will appear when ON is set. These items of menu are linked to the main menu.



The multi controllable menus are "Power & Status", "PC adjustment", "Control", "Setting", "E-mail setting", "Timer", and "SNMP setting". Click each menu and perform setting and adjustment.

✎ The word "MULTI CONTROL" appears on the each control page while the multi control is operating.



Register the projector

To use the multi control function, register the IP address of the projector you intend to control. Click **PJ registration** sub menu tab and set the IP address, Memo and Multi control item, then click **Set** button.

Items	Description
IP address	Enter IP address of the projector to control
Memo.....	Enter projector name or installed location etc.
Multi control item	
Control	Controlling the projector
Control & Image	Controlling and displaying images
Image.....	Displaying the images

Confirmation of registered projector

To check the registered information, click **Check & Change** sub menu tab. The registered information of the projector is listed as the below.

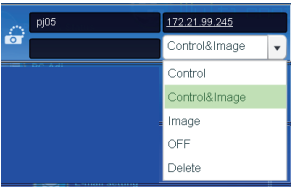
*The word "none" is displayed if the "Memo" function is used.

* When you click on a listed IP address, the login page for the selected projector will be displayed with a new window.

Name	IP address	Status	Memo
ShowRoom1	192.168.1.5	OFF	
Proj10	192.168.1.10	Control	
Proj20	192.168.1.15	Control	
Proj25	172.21.95.27	Control	
Proj32	172.21.95.32	Control	
Proj45	192.168.1.45	Control	
Proj50	192.168.1.50	Control	

Change the mode of the registered projector

To change the mode of the registered projector, select a mode with the pull-down menu button under the IP address of the target projector and then click **Set** button.

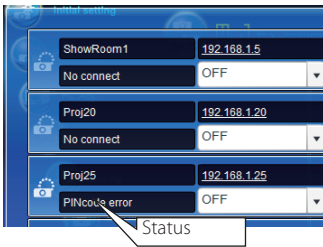


Mode	Operation
Control.....	Controlling the projector
Control & Image.....	Controlling and displaying images
Image.....	Displaying the images
OFF.....	Excluding from the multi-control
Delete	Deleting from the multi-control

* The multi control item is not available with the light mode.

Status

If some of the registered projectors are disabled by some reasons (such as disconnecting the power source, disconnecting the LAN cable, disconnecting from the network), control changes will continue to be effective for the projectors that are still active. At the same time, the deactivated projectors are excluded from the multi-control. The status of the registered projectors are indicated under the projector name. See the table below for status indications.

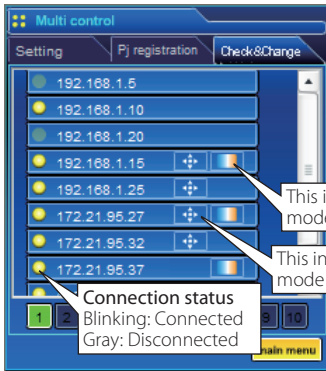


Status	Description
(blank).....	The projector is connected to the network correctly
No connect	The projector may not be connected to the network. Please check the connection and network configuration of this projector.
PIN code error.....	The PIN code is incorrect. The PIN code for the multi-controlled projectors must be the same. Change the PIN code of this projector to the common PIN code. (p.32, p.44)
File Error.....	Not displaying the images. Check if this projector is using the Network Capture function, or in the standby mode.

* The projector updates the status at the time when the multi-control function is executed.

- ☞ If the multi-controlled projector is in the standby mode, items of "PC adj.", "Control" and "Setting" cannot be operated.
- ☞ It is recommended that a specified projector should be chosen for setting as a master when you use this multi-control function. The control for the multi-controlled projectors will become too complicated operation if this function is used for each projector.
- ☞ If the registered projector is not connected to the network, it will take a while to complete the multi-control operation because of waiting for the response from each registered projector.
- ☞ There are some disabled items in the multi-control function for the light mode.

Check & Change page in the light mode



Following functions in the "Check & Change" page are not available in the light mode.

- Changing the control mode.
- Deleting the registered IP address
- Indicating the each status
- Indicating the each memo

This indicates that the mode is "Image".

This indicates that the mode is "Control".

(Check & Change page in the light mode)

Controlling all together

"Power & Status", "PC adjustment", "Control" and "Setting" can be controlled all together. Set "ON" the multi control setting and adjust controls of each menu. The setting value is applied to the registered projectors sequentially.

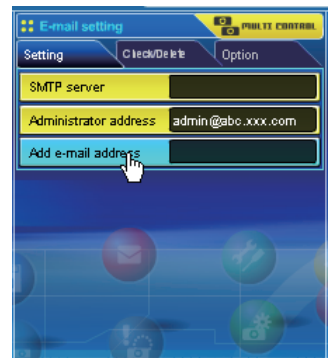
- ☞ This is effective only if the multi control item of the registered projector is set to either "Control & Image" or "Control".



Setting all together

"E-mail setting", "SNMP setting" and "Timer" can be set all together. Set "ON" the multi control setting and items of each menu. The setting value is applied to the registered projectors sequentially.

- ☞ This is effective only if the multi control item of the registered projector is set to either "Control & Image" or "Control".



8. Network capture functions

Network Capture is a function to display the screen image of the computer via the network.

- Real Time Capture

About Network Capture function

The Network Capture is a function to display the screen image of the computer which has a Network Capture 5 software by the projector through the network. This function has a mode as below.

- Real Time Capture (p.93)

A function to display the screen image of the computer by the projector through the network in real time.

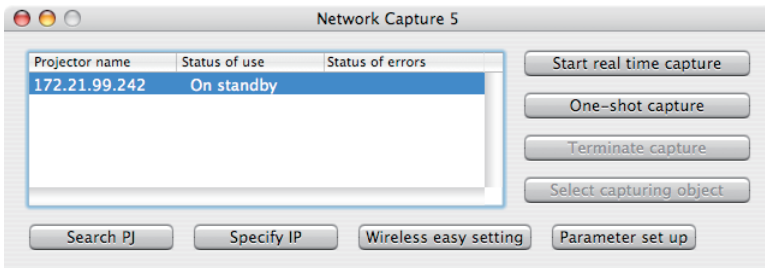
☞ Up to 30 computers can be registered.

Start up the Network Capture 5

To start up the Network Capture 5, click "Network Capture 5" from "Macintosh HD" - "Application" - "Network Capture 5" menu. The application window will appear and search the projectors in the network and list them on the projector list.

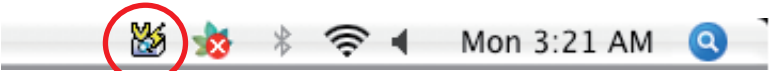
If any projector is not listed, check followings and then search again by pressing **Search PJ** button.

- Is the projector turning on and connected to the network?
- Is the network setting of projector and computer configuring correct?
- Is the same capture port no. used among computer and projectors?



Commands on the menu bar

When the **Network Capture 5** icon on the menu bar is clicked, the popup menu will appear. It provides according to the operating modes as shown in the table below.



Network Capture activating

Parameter set up...
Window show..
Version information..
Shut down

Menu during Real time capturing

One-shot executing

Start real time capture
One-shot capture
Terminate capture
Window show..
Version information..
Shut down

Real time capture executing

One-shot capture
Terminate capture
Window show..
Version information..
Shut down

Items	Description
Start real time / Terminate capture.....	Starts / Terminates the real time capturing. (p.93) The screen image of the computer is projected on the screen in real time.
One-shot capture.....	Transfers the one-shot screen image of the computer.
Select capture object*	Sets to display the capture window selection dialog. * This menu will appear when "Select capturing object" is checked on the parameter setting. (p.92)
Parameter set up	Sets the communication parameter between the computer and projector. For further information, see item "Parameter set up" on the next page.
Window show.....	Displays the application window on the screen.
Version information	Displays the version of this software.
Shut down.....	Quits the Network Capture 5 application.

Parameter set up

Click **Parameter set up** button and setup the parameters on the Parameter setup window.

Items	Description
Capture port	Sets the capture port no. on the projector. Default is 9000.
Pincode	Sets the Network PIN code on the projector.
PJ search time	Sets the time to search the projector between 1 to 60 seconds. Default is 5 seconds.
<input type="checkbox"/> Search PJ when starting up Network capture	Check if Search PJ automatically starts when launching the network capture function.
<input type="checkbox"/> Select normal network adapter	Uses default setting. Default is un-checked.
<input type="checkbox"/> Auto-power on	The projector turns on and projects the computer's captured image on the screen automatically when the network capture is executed while the projector is in the standby.
<input type="checkbox"/> Select capturing object	Check if you want to select an individual window on the computer screen. This is useful function when you open the multiple windows on the computer's screen. When you execute the capturing, the window selection dialog appears. Select a window name from the dialog window. The projected window size is automatically adjusted to fit the projector's screen size.
Sharpness	Select a capturing picture quality among "High", "Medium", "Low"
<input type="checkbox"/> Reduce image	Check if the capturing image resolution is more than projector's panel resolution (XGA),
Capture start up time	Sets the delayed time from the capture start in second.

Capture port: 9000

Pincode:

PJ search time: 5

☒ Search PJ when starting up Network capture

☐ Select normal network adapter

☐ Auto-power on

☒ Select capturing object

Sharpness: High

☐ Reduce image

Capture start up time: 0

OK Cancel

☞ To check the Capture Port number, see item "Control by the web browser" (☞ p.95). To check the PIN code, see item "Network PIN code setting" (☞ p.32, p.44).

☞ Specify the port number of TCP/IP. The default port setting is 9000. There are some reserved port numbers and also some applications may use their own port numbers. If one of those port numbers is used, the alert dialog window will appear and let you know that it is an invalid port number. In that case, use another port number.

☞ The reserved port numbers are http (80), ftp (21), telnet (23), (25), (110), etc. The port no. 4352, 10000, 10001 are reserved to control the projector through the LAN port.

☞ The "Parameter set up" can not be operated during the real time capturing.

Using the Real Time Capture

This is a function to project the screen image of the computer by the projector in real time. The captured image projected by the projector can be selected from the computer, web browser and the projector respectively.

Registering the computers

Up to 30 computers can be registered.

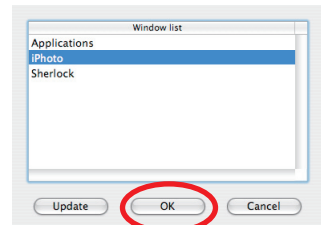
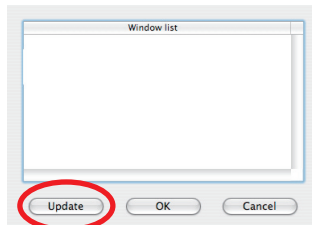
- 1 Access to the control page of the projector by using the web browser. From the **Network** menu, click **Capture** tab to display the setting page.
- 2 Switch to **Connection Setting** page by clicking the page number tab [3]. Enter the IP address of the computer to the PC number, and then click **Set** button. Click **Set** button to register the IP address for each page.



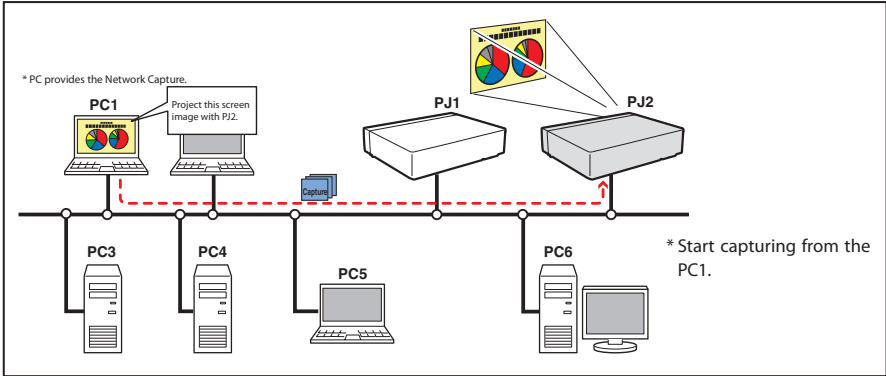
- ☞ The registered computer enables to start capturing if only the Network Capture 5 is activated.
- ☞ The transfer speed of the captured image using the Real Time Capture function is depending on the network environment and data volume of the image. It cannot be supported for movie pictures.
- ☞ The projector can not reproduce the sound during the real time capturing.
- ☞ "Spinning wait cursor" cannot be captured.

- ☞ If you start capturing with the Select capturing object on the parameter set up window checked, the Select capturing object window below(right side) appears. Select the desired window title from the window list and click OK button.

If no window is opened, no window title is displayed on the window list as shown on the left figure. Even the new window is opened, the display of the Select capturing object window would not change. If you would like to capture the new window opened, click Update button to show the window title on the window list, select it and click OK button.



[1] Control by the computer



Select input mode to "Network" previously.

1 Start up Network Capture 5.

2 Select the projector(s) listed on the projector list on the application window and click **Start real time capture**. The application window will disappear and then the screen image of the computer will appear on the projected screen in real time.

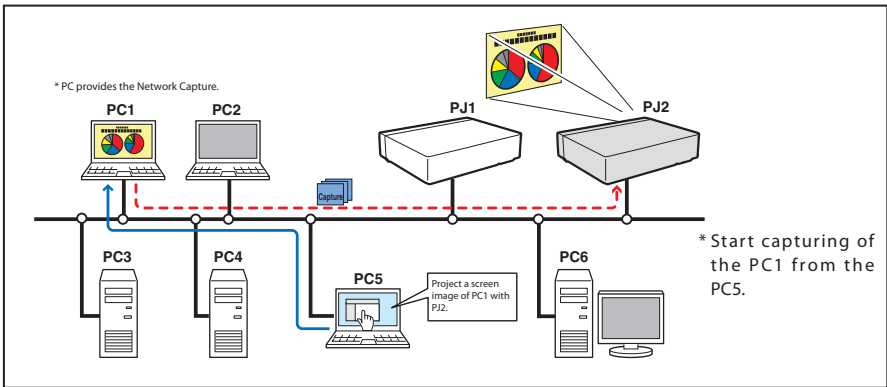
* You can select multiple projectors (up to 5) on the projector list.

- To stop capturing, click **One-shot capture** on the popup menu appearing by clicking on the Network Capture 5 icon on the menu bar. The captured image of the computer on the screen is frozen.
- To restart capturing, click **Start real time capture** on the popup menu.

3 To end capturing, click **Terminate capture** on the popup menu appeared by clicking on the Network Capture 5 icon on the menu bar.

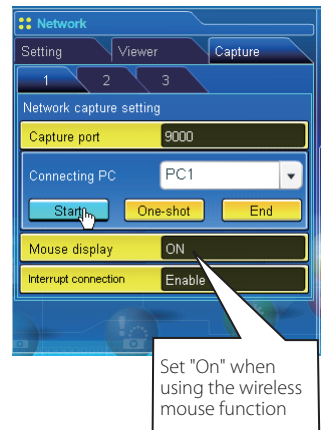
One-shot capture	
Terminate Capture	
<hr/>	
Window show..	
Version information..	
Shut down	

[2] Control by the web browser



Select "Network" as input mode previously.

- 1 Access to the control page of the projector by using the web browser. From the **Network** menu, click **Capture** tab to display the setting page.
- 2 Select the computer number from the pull-down menu button of "Connecting PC" and click **Start** button. The screen image of the selected computer will appear on the projected screen in real time.
 - To stop capturing, click **One-shot** button. The captured image of the computer on the screen is frozen.
 - To restart capturing, click **Start** button.
- 3 To end capturing, click **End** button.



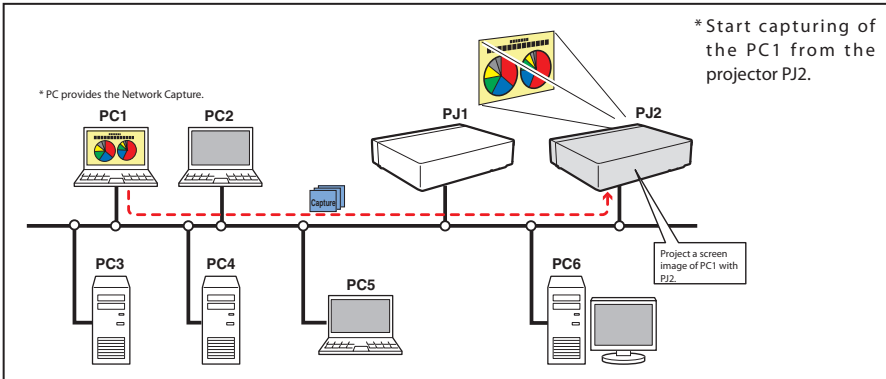
Item	Description
Interrupt connection.....	Set enable or disable the real time capturing connection from other computers during executing the real time capturing operation.

☞ The IP address of the connecting PC should be registered previously (☞ p.93).

☞ If the error message appears, check item "Parameter set up" (☞ p.92).

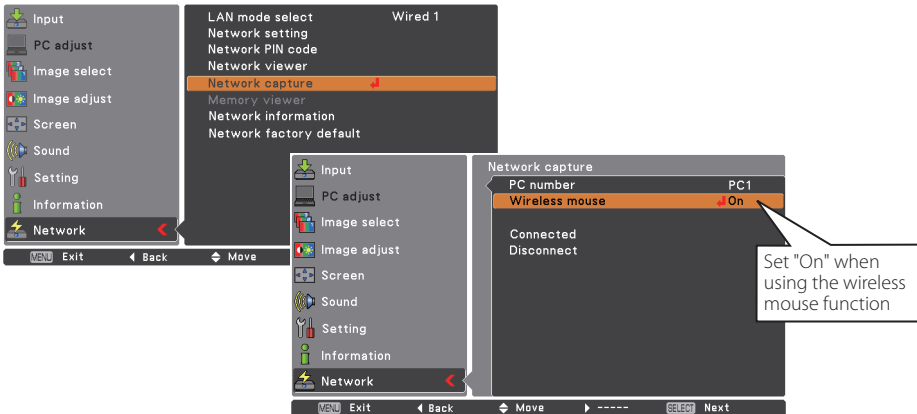
☞ To use the capture function from the web browser or projector, the Network Capture 5 on the captured computer must be activated.

[3] Control by the projector



Select "Network" in the Input menu previously.

- 1 Select "Network capture" in the Network menu. Press Point ► or SELECT button.
- 2 Select "PC number" and press SELECT button and using Point ▲▼ buttons to select the PC number to connect, and then press SELECT button.
- 3 Select "Connected" and then press SELECT button to start capturing. The screen image of the selected computer will appear on the projected screen in real time.
- 4 To end capturing, select "Disconnect" and then press SELECT button.

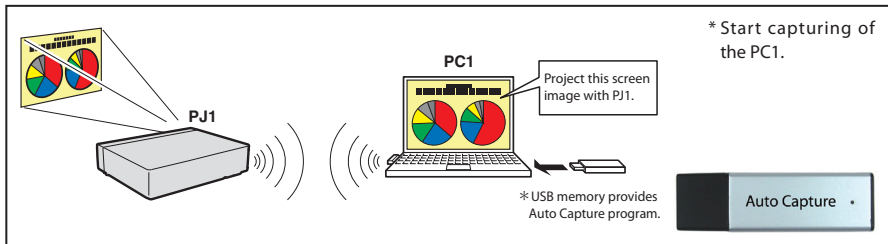


☞ If the error message appears, check item "Parameter set up" (☞ p.92).

☞ The projector does not provide the function to register the IP address of the computer and to set the parameter of the capturing. They should be registered by using the web browser previously (☞ p.93).

☞ The remote control which is provided with the projector does not have the mouse operating function.

[4] Control by the computer with USB memory



The real time capture function can run automatically on the computer without the Network Viewer & Capture 5 software installed by executing the Auto Capture program in the USB thumb drive connected to the computer. The USB thumb drive for Auto Capture is supplied with this projector.

1. Turn on the projector and select "Network" from the input menu of the projector.
2. Select "LAN mode select" from the "Network" menu of the projector and press **SELECT** button. Select "Wired 1/2/3" or "Wireless Simple" with the Point ▲▼ buttons. (☞ p.43)
3. Connect the above USB thumb drive, open it, and then double-click "MacAutoCap5".
4. Automatically, the activated executable file configures the Easy wireless setting. (If the network adaptor selecting window appears, select an option according your network environment.) Then It searches the projector, and starts the real time capture of the computer screen.

*The connection process of AutoCapture is different according to the equipped LAN adapter..

In case of only the wired LAN adapter is provided in the computer:

Connect to the network with the wired LAN adapter and search a projector.

In case of only the wireless LAN adapter is provided in the computer:

Change the LAN setting of the computer to SIMPLE and search a projector with the wireless LAN adapter.

In case of both the wired and wireless LAN adapters are provided in the computer:

When "Usually set it to a network adapter to use" is not checked; the network selection window is displayed.

5. For the following operations, refer to Page 94.

Setting condition for automatically starting the real time capture function

Projector:	Power: On, Input mode: Network, LAN mode select: Wired 1/2/3 or Wireless Simple The searching result becomes only one projector.
Computer PC1:	Log in by Administrative The wireless LAN card or the Wired LAN card: Provided, Network Capture 5 software: NIL Activate MacAutoCap5 in USB thumb drive Before using wired LAN, the network settings should be completed.

☞ If the error message appears, check item "Parameter set up" (☞ p.92).

☞ When your computer provides multiple network adaptors, and "Select normal network adaptor" on the parameter setup window is un-checked, the network adaptor selecting window (☞ p.24) will appear.

☞ When plural projectors are found, the real-time capture will not start, but will become standby status. Release the wireless LAN SIMPLE setting of the projector which is not for the real-time capture.

☞ If the specified files are copied in the root of commercial USB memory, you can also perform the AutoCapture (☞ p.110).

Example of advanced use

Displays the presentation data stored in the computer by using the wireless mouse function from the projector.

1 Start capturing of the computer PC1 by using the projector.

Select "Network Capture" icon from the menu and select "PC1" and then select "Connect" (☞ p.96).

=> The Network Capture software installed in the selected computer will start capturing.

2 On the image of the PC1 projected on the screen, search a presentation file data stored in the PC1 by using the wireless mouse function of the remote control supplied with the projector.

3 Select a desired file and double click with the remote control.

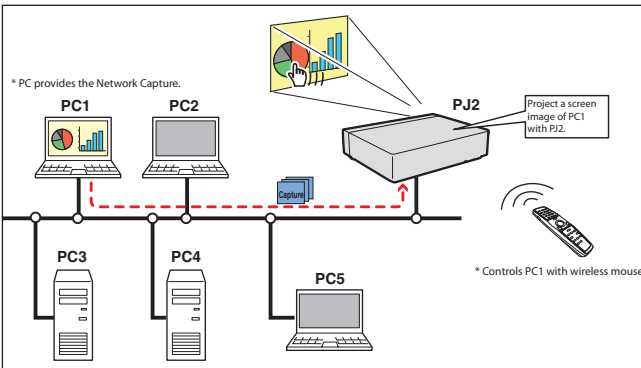
=> The application by which the document was created starts and the projector projects the presentation picture on the screen.

4 Start the presentation.

=> By using wireless mouse function, control the page browsing and some other operations for the PC1.

☞ For further instructions of the wireless mouse, please refer to the projector's owners manual.

☞ On the projected screen using with the network capture, the shape of the mouse pointer differs from the one on the computer's screen.



Setting condition

Projector

Input mode: Network

Registering the connection:

The IP address of the computer and proper parameter must be set to the PC1 (☞ p.92-93).

Mouse Display: "On" (☞ p.95)

Computer PC1

Software:

The Network Capture 5 is activated.

Error information

Error messages	Cause and corresponding
Cannot be displayed as PJ is under display.	Error when Start real time capture is executed. The other capture, viewer or memory viewer function is now operating. → Wait until the communication function is available.
Cannot connect to PJ.	Cannot establish the connection with the projector when Capture transfer, Start real time capture or Terminate capture is executed. → Check connection of the network cable.
Cannot transfer data to PJ.	Cannot transfer the data to the projector when Capture transfer, Start real time capture or Terminate capture is executed. The time-out period is 10 seconds. → Check the connection of the network cable.
Invalid port number	When the parameter is set, the reserved port number is specified. → Check the parameter setting (☞ p.92)

☞ The Capture transfer is Windows-compliant, but non-Mac-compliant.

9. Appendix

Use of telnet

Web browser setting

Firewall setting

Troubleshooting

Terminology

Use of telnet

You can control the projector by using the telnet application¹ installed on your computer. Normally, the telnet application is available on your computer.

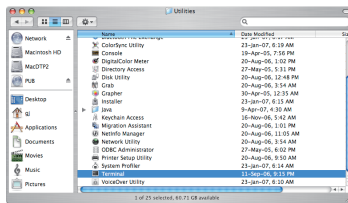
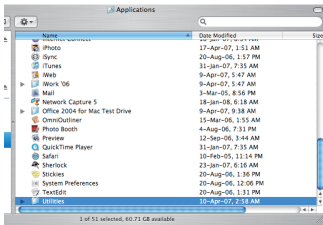
* The telnet 10000 port is used to control the projector.

Control

(For example, in case of using the telnet application of Mac OS X v 10.4)

1. Select **Terminal** from **Applications --> Utilities**. Type as below on the displayed window.

> telnet [return]



2. The telnet application will start and the following window will be displayed.

```
Terminal — telnet — 80x24
Last login: Wed Jan 30 06:17:19 on ttys1
Welcome to Darwin!
Macintosh:~ gis$ telnet
telnet:~
```

3. Type as below to connect the projector.

> open 172.21.99.251_10000 [return]

* Use the IP address assigned to the projector

```
Terminal — telnet — 80x24
Last login: Tue Feb 26 15:59:02 on ttys1
Welcome to Darwin!
Macintosh:~ gis$ telnet
telnet> open 172.21.99.251_10000
Trying 172.21.99.251...
Connected to 172.21.99.251.
Escape character is '^['.

PASSWORD: |
```

4. When communication is established correctly, the word "PASSWORD:" appears on the window. Type the login password (Network PIN code²) for the projector and then press "Enter" key on the keyboard. If you do not set up the Network PIN code, just press "Enter" key.

When the word "Hello" is replied, login has been succeeded.

* The password "1234" is used for the example.

```
Terminal — telnet — 80x24
Last login: Tue Feb 26 16:03:39 on ttys1
Welcome to Darwin!
Macintosh:~ gis$ telnet
telnet> open 172.21.99.251_10000
Trying 172.21.99.251...
Connected to 172.21.99.251.
Escape character is '^['.

PASSWORD: 1234

Hello
|
```


5. Type the commands, refer to below table, to control the projector and then press "Enter" key for termination. For example, type "C00" which is a command to turn on the projector, and press "Enter" key. Confirm the projector is turning on.

* Enter with ASCII 64-byte capital characters and one-byte characters.

To disconnect the communication, press "Control" key and "]" key at the same time, type "close" and then press "Enter" key on the Keyboard.

> close [return]

The table below shows the typical command lists for controlling this projector and please consult your local dealer for further information of another commands.

Command list table

Command	Function
C00	Power on
C02	Power off
C09	Volume up
C0A	Volume down
C0B	Audio Mute on
C0C	Audio Mute off
C1C	Menu display on
C1D	menu display off

*1 Further instructions about the telnet application, please see the on-line guide on your computer.

*2 The password is a Network PIN code decided item "Network PIN code setting" (p.32, 44). If the authentication of the entered password is failed 4 times continuously, the communication will be disconnected automatically. Please try again for the connection.

*3 If the password or any command is not entered for more than 30 seconds, the communication will be disconnected automatically. Please try again for the connection.

Web browser setting

This product is designed to enable the projector to be set up and controlled from an Internet web browser. Depending on the preference settings of the web browser, some control functions may not be available. Please make sure that the following functions are set up properly in the web browser.

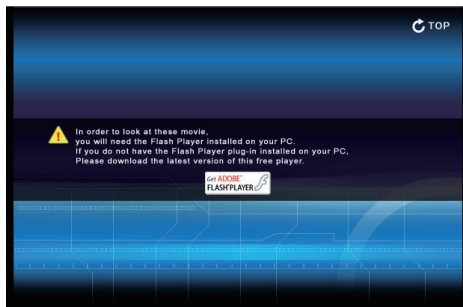
JavaScript enable

There are some control items used with the JavaScript function in the setting pages. If the web browser is set not to use this JavaScript function, it may not control the projector properly. In that case, the following warning message will be displayed on the top of the page. To enable the JavaScript, please see further instructions on the next page.



Flash Player enable

The setting page of this product contains the Flash contents. To display the setting page, the Adobe Flash Player version 6 or later is required to be installed on your computer. For further product information, see the Adobe homepage. (<http://www.adobe.com>). Even if your computer provides the Adobe Flash Player, the setting page does not appear on the web browser, in which case, check that Flash Player Plug-In(Shockwave Flash) is installed and set up correctly. Please see further instructions on the next page and it is depending on the web browser.



Proxy setting

In some cases, your web browser is set up to use the proxy server for the internet or intranet connection. In that case, when you install this product into the local network, you should set up the proxy setting of web browser preference correctly. Especially when connecting the projector and computer with a UTP cross cable directly, or when the network does not provide the proxy server, make sure that "not use proxy server" is set up in your web browser preference. Please see item "Examples: OS/Browsers" in the next page for further setting up procedure.

There are various ways to change your browser preferences depending on the version or applications. Please see the setting instructions on next page showing examples and also refer to on-line help of your web browser.

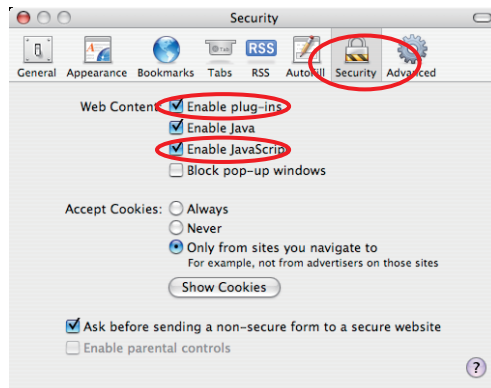
Examples: OS/Browsers

MAC OS X v 10.4

Safari

JavaScript and Flash Player enable setting

Select **Preferences...** from **Safari** on the web browser and then select **Security** tab and check **Enable plug-ins** (for flash player) and **Enable JavaScript**.



Proxy setting

- 1 Open **Preferences...** from **Safari** menu on the web browser **Safari**. The preference menu appears.
- 2 Select **Advanced** icon and then click **Proxies: Change Settings**
- 3 Select **Proxies** tab and properly set up your web browser **Safari**'s the proxy server settings according to the local area network environment to which the projector is connected.

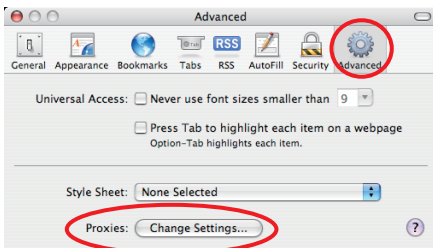
- Using proxy server

To use an external internet connection from the local area network, check the items **Web Proxy (HTTP)** and **Secure Web Proxy (HTTPS)** of **Select a proxy server to configure** window and enter the proxy server address and port correctly in **Web Proxy Server** window. For further instruction please consult your network administrator.

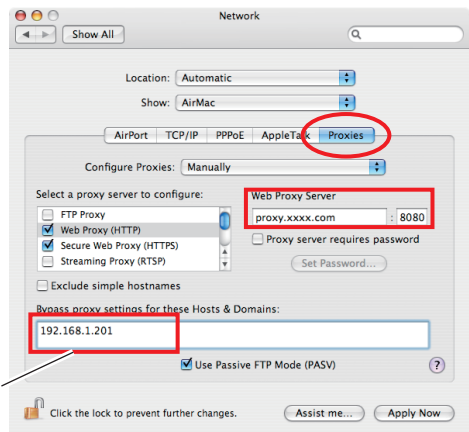
- Not using proxy server

Uncheck the items **Web Proxy (HTTP)** and **Secure Web Proxy (HTTPS)** of **Select a proxy server to configure**.

If you connect the projector to the computer directly with UTP cross cable, they must be unchecked.



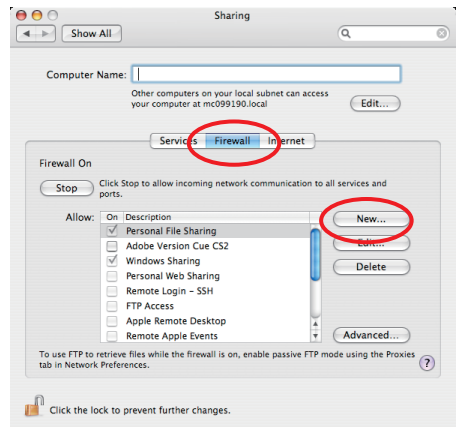
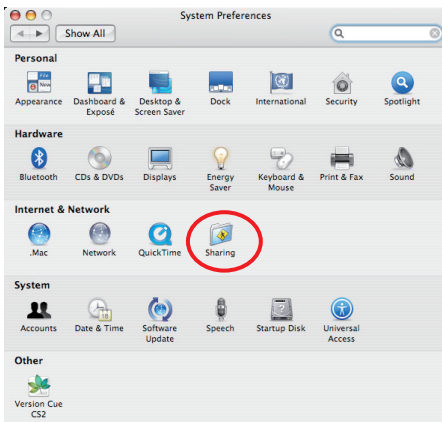
To designate proxy settings that will not use the proxy server when accessing the projector installed in the local area network, enter the IP address or domain name here.



Firewall setting for MAC OS X v 10.4

When you use Macintosh OS X v 10.4 and Network Capture 5, you can cancel the firewall blocking following to the steps below;

- 1 Open **System Preferences** from **Apple** menu, click **Sharing** icon. The **Sharing** setting window will appear.
- 2 Select **Firewall** tab and click "New...", then a dialog box appears.
- 3 Specify the items as follows;
 - Port Name : **Other**
 - TCP Port Number(s) : **9000**
 - UDP Port Number(s) : **9000**
 - Description : You can name as you like. "Network capture 5" on the figure is just an example.
- 4 Click **OK** to close setting.



Specify a port on which you would like to receive networking traffic. Other ports can be specified by selecting 'Other' in the Port Name popup. Then enter a the port name and a number (or a range or series of port numbers) along with a description.

Port Name: Other

TCP Port Number(s): 9000

UDP Port Number(s): 9000

Description: Network Capture 5

Cancel OK

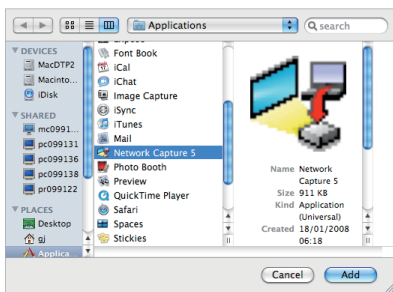
Firewall setting for MAC OS X v 10.5

If you use Macintosh OS X v 10.5 and Network Capture 5, you may see the security warning dialog as below. In that case, click "Always Allow" button on the dialog to enable the function of Network Capture 5.

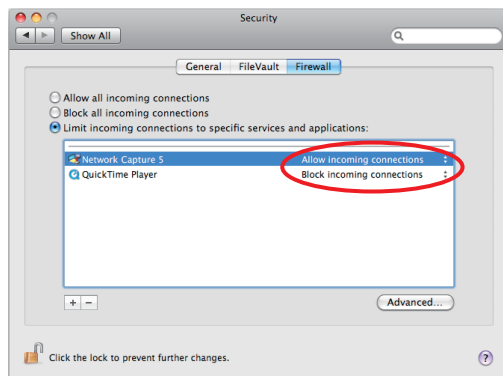
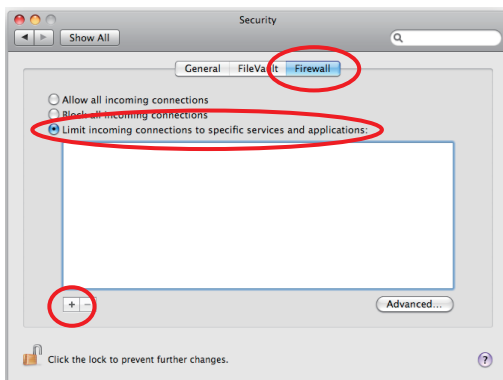


Even if you select "Deny", you can cancel the blocking following to the steps below;

- 1 Open **System Preference** from **Apple** menu, click **Security** icon. A security setting window appears.
- 2 Select **Firewall** tab, check **Limit incoming connections to specific services and applications**, and then click "+". A finder menu appears.
- 3 Select **Network Capture 5** and click **add** button. The application name will be added in the column.



- 4 Click the options of "Allow incoming connections" or "Block incoming connections" in the column and select "Allow incoming connections".
- 5 Close setting.



Troubleshooting

If you have any trouble in setup or operation of the projector, refer to the troubleshooting items and check the relevant matters described.

■ The computer cannot connect projectors.

Wired LAN

Is the LAN cable connected to the projector properly?

Is the LAN setting of the projector set "On"? See "Wired LAN setting" in the projector menu.

The LAN cable is connected to the network HUB properly?

Wireless LAN

Is the WIRELESS indicator on the side panel of the projector lighting?

If there are not any problems, confirm the LAN setting again. Refer to the next item.

If the computer supports Wireless LAN, activate the Network Capture 5 and try to connect with the Easy setting button. Refer to "5. Wireless LAN configuration" → "Easy wireless settings" (p.43).

If the wireless LAN card provides the firewall function itself, set up to disable its function.

■ Cannot connect with easy wireless setting function

The projector should be set up previously to complete the easy wireless setting. Depending on the wireless LAN card or computer, this easy wireless setting function may not be available.

When your computer is using multiple network adaptors which are available in the setting, and their IP address groups are the same as shown below, this easy wireless setting function may not be succeeded.

[For example]	IP address setting of Wired LAN adaptor in your computer	: 169.254.*.*
	IP address setting of Wireless LAN adaptor in your computer	: 169.254.*.*

■ Wireless LAN Connection cannot be established.

AdHoc Mode:

When selecting LAN4(factory default setting)

Check each item in the Wireless Setting menu of the projector as follows:

*IP Address.....Is the address appropriate? Should not be the same as the other IP address.

*Sub net.....Should be the factory default value, 255.255.0.0.

*Gateway.....Should be the factory default value, 255.255.255.255

*Network Type.....Should be AdHoc mode

*ESSID/SSID.....Should be the same as the setting of computer

->Check the setting for the computer

*Is the Wireless channel set as 11 both for the computer and the projector?

-> The factory default channel of the projector is 11.

*WEP (Wired Equivalent Privacy) Should be disabled.

Infrastructure Mode:

When selecting Wireless 5 (factory default setting)

Check each item below in the Wireless Setting menu of the projector as follows:

- *IP Address.....No setting is required.
- *Sub net.....Should be the same as the setting of the access point
- *Gateway.....Should be the same as the setting of the access point
- *Network Type.....Should be the Infrastructure mode
- *ESSID/SSIDShould be same as the setting of the access point

Check the settings for projector Client computer

- *IP Address.....No setting is required. Automatically set as DHCP.
- *Wireless ChannelShould be 11
- *ESSID/SSID... ..Should be the same as the setting of the access point
- *WEPShould be disabled.

*When Wireless 5 is used, it is necessary DHCP server is under the environment enabling those servers communicate through networks. Some access points may have the DHCP function. For detail of the settings, refer to the owner's manual for the devices or consult a system administrator of the network.

Is the segment where the projector is installed different from the computer?

Specify IP Address directly on the optional setting. Refer to "4. Wired LAN Configurations" → "Confirming the Operation" (p.30–31).

■ Connection between computer and the projector via Wired LAN cannot be established.

When selecting LAN1 (factory default setting)

Check IP address, Sub net and Gateway of the projector and computer. For further details of the configuration, contact your system administrator.

Is the segment where the projector is installed different from the projector?

Specify IP Address directly on the optional setting. Refer to "4. Wired LAN Configurations" → "Confirming the Operation" (p.30–31).

■ Cannot start up the browser

Is the connection between PC and the projector with Network Capture 5 established?

No.....Check settings for Wireless/Wired LAN.

Yes.....Check settings of the proxy setting at browser. Refer to "Web browser setting" (p.102).

■ **Although the connection between PC and the projector is established, images are not projected on the screen.**

Make sure Wireless/Wired is selected from the Input source menu of the projector.

■ **Cannot be turned on/off with the web browser.**

Make sure the settings of the projector are correct to use the projector with it.

Set the item Standby mode to "Network" from Main menu → Setting menu.

Refer to "7. Controlling the projector" → "Power control and status check" (p.68).

■ **Wired / Wireless input cannot be changed. Network Capture 5 cannot be operated.**

Restart the projector or Network Capture 5.

Execute "Wired factory default" or "Wireless factory default" menu on the projector.

Caution: After executing "Wired factory default" or "Wireless factory default" in the projector menu, all the network settings you have made will return to the factory default settings. See the items "Wired factory default" (p.34) and "Wireless factory default" (p.46) for the each factory default value.

Network capture

■ **Why doesn't the computer screen appear on the projected screen?**

1. Make sure that the input mode of the projector is "Network".

2. Check the parameter set up (p.92).

Make sure that the numbers of the capture port is the same as the projector's port number. The default port number is 9000. If the alert message "Invalid Port No." appears, your computer may be using this port number already. In that case, use another port number.

3. Check the IP address of the computer is registered to the projector correctly (p.93).

4. Make sure that your computer is not using the firewall function. The projector may not be able to use the port due to this firewall function. In that case, please turn off this function temporarily. There are also some port limitations on the network equipment such as router. Please consult your network administrator. (p.105-106)

■ **Speed of playing back images are very slow.**

When connecting on AdHoc mode, check which Wireless channel you are using.

If the computer using the same channel as yours is existing closely, the networking speed may be reduced or the communication unstable. Change the channel to resolve the problem. The channels of the projector and projector Client computer must be the same. Or adjust the Quality selection in the parameter setting.

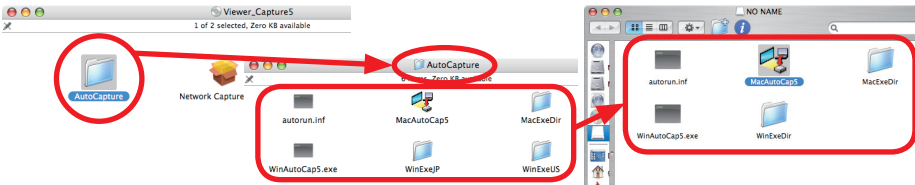
Refer to "Parameter set up" (p.92).

Auto Capture

■ I have deleted the AutoCapture program file on the supplied USB memory.

I want to perform the AutoCapture with a commercially available USB memory.

To perform Auto Capture, you should have all files and folders of "Auto Capture" folder on 'Network Viewer & Capture 5 (CD-ROM)' on the root of USB memory. By copying or drag and dropping those files and folders on the root of a commercially available USB memory, you can perform the AutoCapture as well as a supplied USB memory.



Terminology

DHCP server (Dynamic Host Configuration Protocol)

It is necessary to set an IP address for each computer or equivalent equipment when a network is established by TCP/IP. If there exists DHCP server on the network, it will assign IP addresses to client computers every time they request it. If there exists equipment with DHCP server functions (such as a server and a router) on the network, the DHCP server function may be automatically operating. Ask your system administrator whether the DHCP server is operating.

ESSID (Extended Service Set Identifier)

ESSID is the ID that is set to computers on Wireless LAN or access point in order to prevent each computer from being crossed. The computers or access point to which the same ESSID is set can communicate with each other. If an ESSID is different, it is impossible to communicate. ESSID distinguishes between lowercase and uppercase characters, and allows you to use English one byte characters and half-size symbols up to 32 characters.

WEP (Wired Equivalent Privacy)

WEP is a security protocol for Wireless LAN. It protects computers on Wireless LAN and access point from unauthorized access by setting a description code onto them. It is necessary to set the same decryption code for equipment.

Wireless Channel

It is necessary to divide frequency spectrums into some Wireless channels for Wireless communication, and to tune to the same channel between Wireless equipment. If you use the same channel on the same floor, and there are some Wireless LANs that have a different ESSID for each, the communication speed may become slow. In that case, using different channels for each Wireless LAN is effective, which lowers a possibility of mutual interference between Wireless LANs.

MAC address (Media Access Control Address)

MAC address is a physical address for every network interface. The MAC address consists of 6-byte hex number. The first 3 bytes are a Vendor ID controlled and assigned by IEEE. The last 3 bytes are controlled and assigned by the manufacturers of network interface (no duplication of MAC address). Therefore, MAC address is a unique physical address in the world. Ethernet sends and receives frames on the basis of MAC address.

IEEE802.11b

It is one of the wireless LAN standards set by 802 committee that formulates a standard of the LAN technology in IEEE (the Institute of Electrical and Electronics Engineers). By using the 2.4GHz license-free frequency band, you can perform communication at a speed of 11 Mbps at the maximum.

IEEE802.11g

By using the 2.4GHz license-free frequency band as well as IEEE802.11b, you can perform communication at a speed of 54 Mbps at the maximum, which is about 5 times the speed of IEEE802.11g. Moreover, there is an upward compatibility with IEEE802.11b.

IEEE802.11n

It is a next-generation Wireless LAN standard that is being developed with the aim of producing the maximum transmission speed of 600Mbps by using the technology called MIMO, combines multiple channels and performs transmission. It is being designed to have a compatibility with IEEE802.11b and IEEE802.11g.

Wi-Fi Alliance (Formerly Name: WECA (Wireless Ethernet Compatibility Alliance))

It is an organization that aims to promote the spread of Wireless LAN, and it guarantees the interoperability of products that meet the Wireless LAN standard.

Wi-Fi (Wireless Fidelity)

It is a brand name, showing that the interconnectivity between wireless LANs is certified by the Wi-Fi Alliance (formerly WECA). The products that passed the Wi-Fi Alliance interoperability test are given the certification of 'Wi-Fi certified' and permitted to use the Wi-Fi Logo. The products that have Wi-Fi logo are guaranteed to interoperate with other Wi-Fi products.

WPS (Wi-Fi Protected Setup)

It is a standard to easily perform security of the wireless LAN which Wi-Fi Alliance devised. There are two kinds of WPS configuring which is push button type and PIN code type.

Push button type: ESSID and WPA2 key to access point are sent to a client by pressing the exclusive button put on an access point (host) and a client each.

PIN code type: A number (four-digit or eight-digit) called PIN code assigned to an access point beforehand is input into a client-side.

