



G50

Quick Start Guide

Models G50-W6, G50-W7, G50-W8

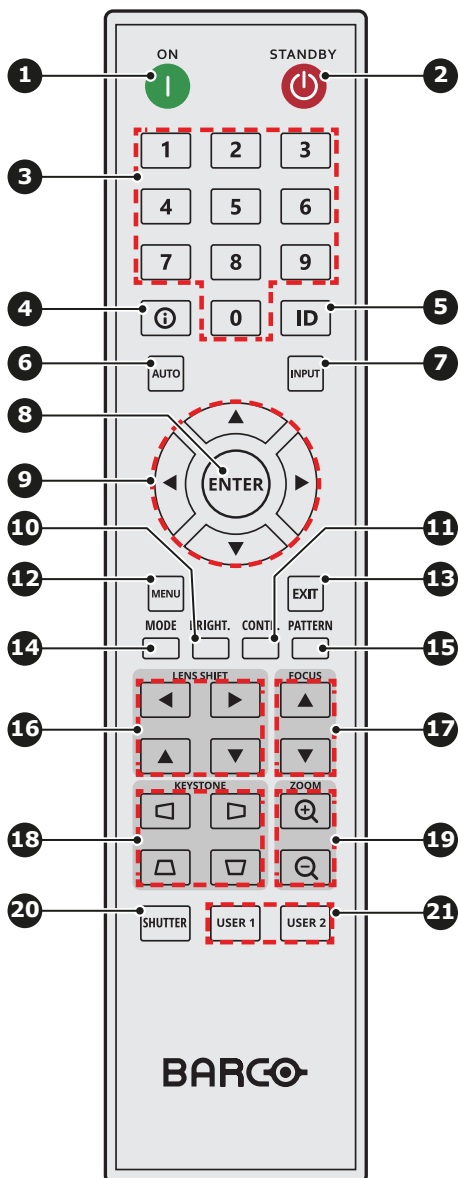


CAUTION: It is important to read the installation instructions before connecting the equipment to the mains power supply.



Download Product Manual: Product manuals and documentation are available online at <https://www.barco.com/support>. The QR code at the bottom of this page leads directly to the G50 product page on the Barco website. Registration may be required; follow the instructions given on the website.

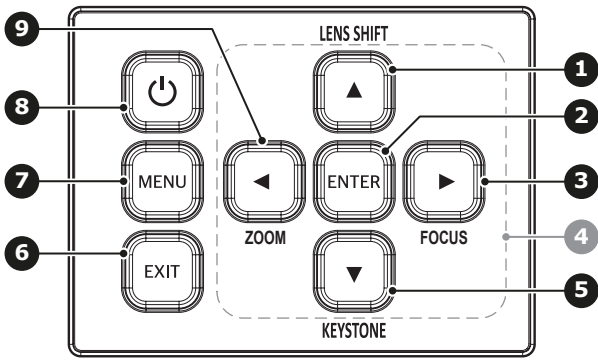
Remote Control Unit (RCU)



- 1 Power On
- 2 Power Off (Standby)
- 3 Number keys 0-9
- 4 Source information
- 5 Projector ID setting
- 6 Auto sync input source
- 7 Select input source
- 8 Confirm menu selection
- 9 Menu navigation
- 10 Adjust brightness
- 11 Adjust contrast
- 12 Open OSD menu
- 13 Back to parent menu or exit menu
- 14 Preset color mode
- 15 Display test patterns
- 16 Adjust lens shift
- 17 Adjust focus
- 18 Adjust horizontal/vertical keystone
- 19 Adjust image size
- 20 Shutter
- 21 User programmable hot key
Default USER 1 = Audio Mute on/off
Default USER 2 = Short cut Audio Volume menu

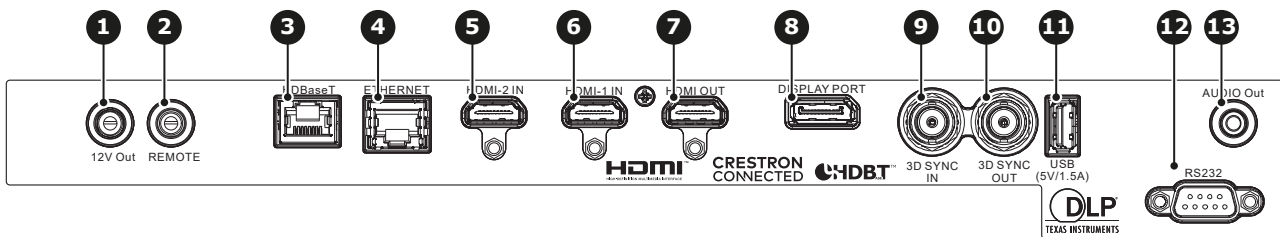


Control panel



- 1 Adjust lens position
- 2 Confirm the settings
- 3 Adjust the image focus
- 4 Menu navigation buttons
- 5 Adjust horizontal/vertical keystone
- 6 Back to parent menu or exit menu
- 7 Enter OSD menu
- 8 Power On/Off
- 9 Adjust the image size

Input/Output ports

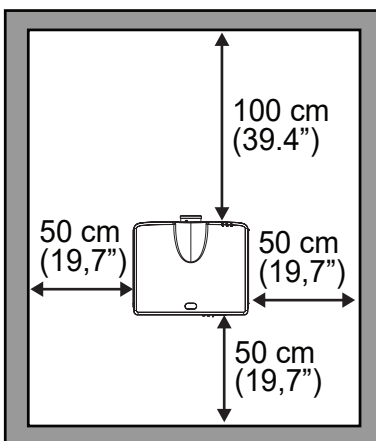


- 1 DC 12V output
- 2 Wired remote input
- 3 HDBaseT port
- 4 LAN connection (RJ45)
- 5 HDMI input port 2
- 6 HDMI input port 1
- 7 HDMI output port
- 8 DisplayPort port
- 9 3D sync input port
- 10 3D sync output port
- 11 USB port type A
- 12 RS232 serial port
- 13 Audio output port

Installation requirements

Requirement	Value
Operation temperature	5°C - 40°C (41°F - 104°F)
Humidity	10 - 85% RH non-condensing
Power	96 - 264 V, 50 - 60 Hz
Dimensions without lens	486 x 376 x 203 mm (W x L x H)
Weight without lens	G50-W6: 11,0 kg; G50-W7: 11,8 kg; G50-W8: 13,0 kg

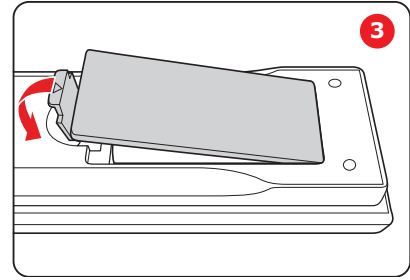
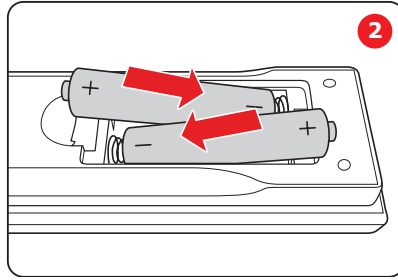
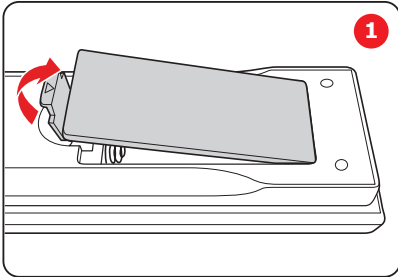
Air cleanliness



Clean office environment, free from hostile airborne particles which may have harmful effects on the internal parts of the projector (e.g., airborne contaminants produced by smoke machines, excessive dust). The projector must be installed with free air space of 100 cm on the front side (lens side) and 50 cm on all other sides of the projector.

Installing the RCU batteries

1. Remove the cover by sliding it in the direction indicated by the arrow.
2. Insert two new AAA batteries (observe the polarity).
3. Reinstall the cover.



CAUTION: Replace batteries with the correct battery type. Use AAA size batteries. There is a risk of explosion if the batteries are replaced with an incorrect type. Make sure the polarities match the + and - marks, as depicted on the inside of the battery compartment. There is a risk of explosion if the batteries are installed incorrectly. Use alkaline batteries for optimum range and life time.



Batteries are not included in the packaging. It is up to the user to purchase the correct batteries.

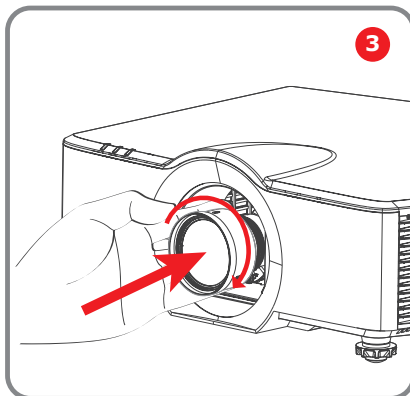
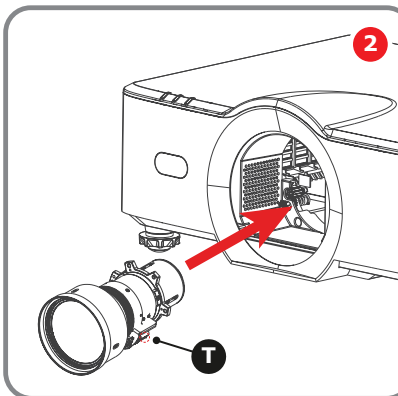
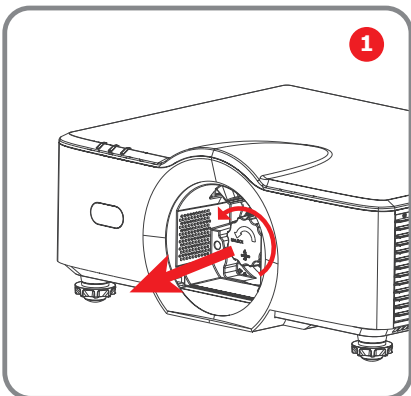
Installing the lens

1. Remove the lens cap. Release the lens by turning it counterclockwise and pulling it outwards.



Warning: Lens cap should be removed before installing the lens. If not it will damage the projector.

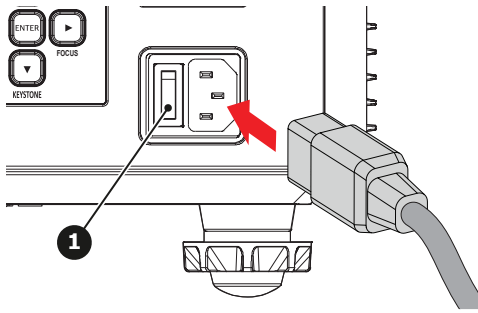
2. Gently insert the lens in the lens holder. Ensure that the label “TOP” (reference T) is upwards oriented while inserting the lens.
3. Rotate the lens clockwise to lock the lens.



CAUTION: Do not transport the projector with any lens installed.

How to power on the projector

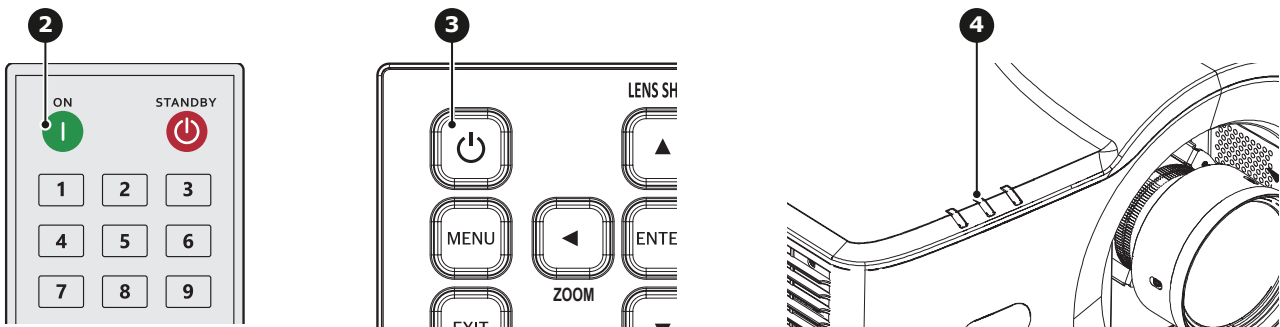
1. Connect the projector with the power net as follows:
 - a) Ensure that the AC switch (reference 1) stands in the '0' (OFF) position.
 - b) Plug in the mains cord in the power input socket of the projector.
 - c) Connect the other side of the mains cord with the power net.
 - d) Power on the AC switch (reference 1) and wait until the POWER button on the control panel is solid red.



- Turn on the projector by pressing the POWER ON button (reference 2) on the remote control or the POWER ON/OFF button (reference 3) on the control panel.

The status LED will flash orange. The startup screen will display and the status LED will turn to solid green (reference 4).

Note: The first time that the projector starts up you have to accept the EULA statements to continue using the projector. Follow the instructions on the screen.



- Turn on your source input. The projector detects the source you selected and displays the image.

Note: If you connect multiple input sources at the same time, press the Input key on the control panel or on the remote control to switch inputs.

WARNING: Do not look directly into the lens when the projector is on. The strong light may cause permanent eye damage.

How to power off the projector

- Press the Power Off button (reference 2) on the remote control or the Power On/Off button (reference 3) on the control panel.

A confirmation request will be prompted on the screen.

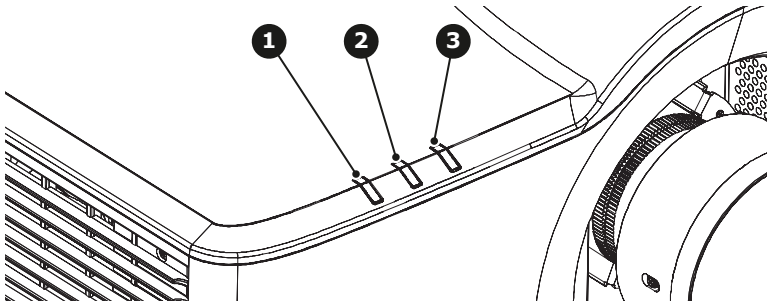
- Press the same button again to confirm.

Note: If not confirmed after five seconds, the confirmation request will disappear and the projector will remain on.

CAUTION: Don't power on the projector again immediately after entering standby mode.

CAUTION: Don't switch off or disconnect the projector from the power net until the cooling down cycle is completed.

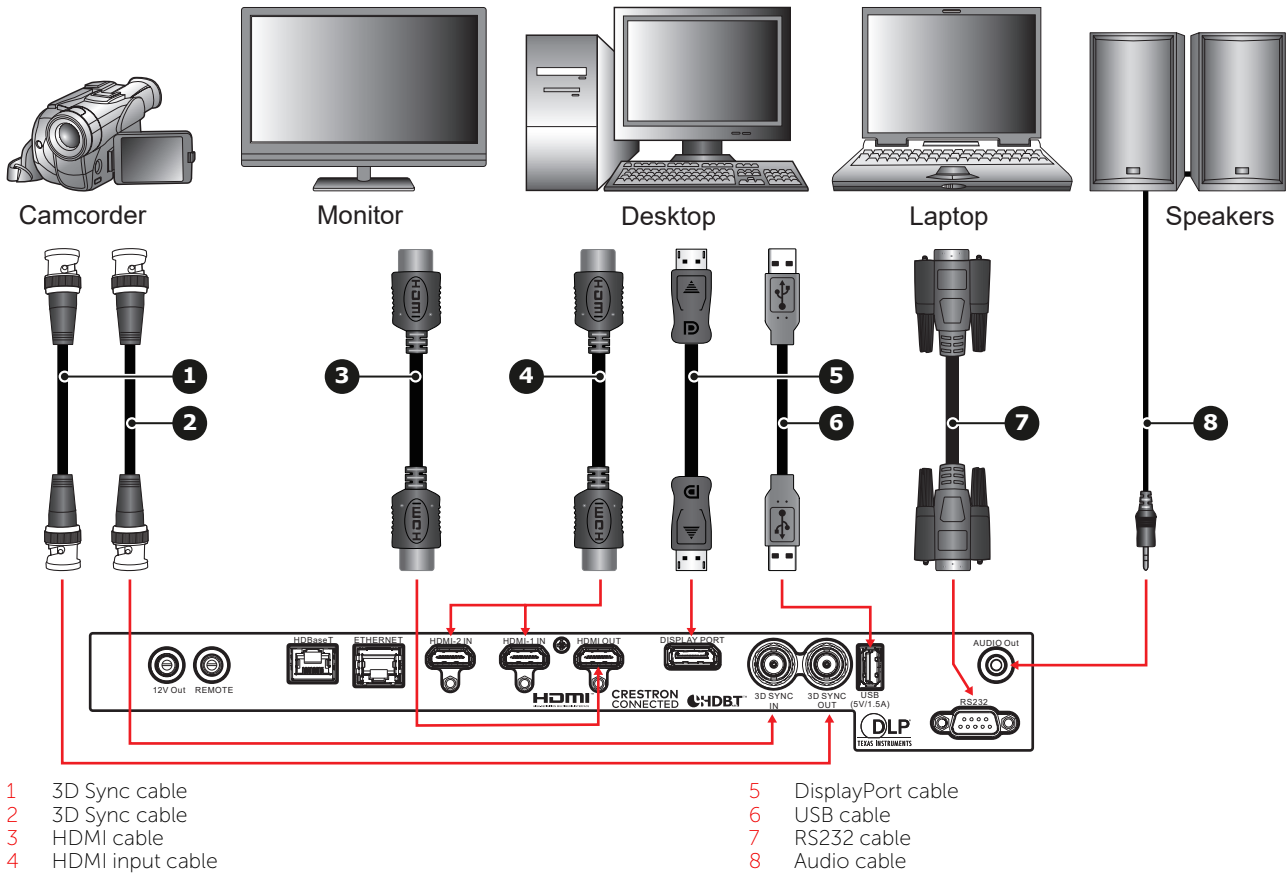
LED diagnostics



- 1 Light LED
- 2 Status LED
- 3 AV Mute LED

Message	Light LED (1)			Status LED (2)			AV Mute LED (3)	
	Green	Orange	Red	Green	Orange	Red	Green	Orange
Standby State								
Power On Warm up					Flashing			
Power On & Laser diode on	Steady			Steady			Steady	
Power Off Cooling down					Flashing			
AV mute is off Image displayed	Steady			Steady			Steady	
AV mute is on Image is black	Steady			Steady				
Projector communication	Steady			Flashing			Steady	
Firmware upgrade				Flashing	Flashing			
Burn-in		Flashing			Flashing			
Factory reset			Steady	Steady				
Error Over temperature						Steady		
Error Fan failure						Flashing		
Error Color Wheel failure						Flashing		

Connecting with a desktop computer or laptop



Connecting to a video source

