

# **LX501/LW401/LWU421/ LX601i/LW551i/LWU501i**

**User Manual-Network Guide**

020-000475-02

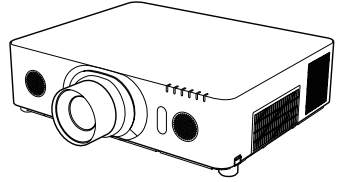
**CHRISTIE®**



**Projector**

**LX501/LW401/LWU421/  
LX601i/LW551i/LWU501i**

**User Manual  
Network Guide**



**User's Manual (detailed) - Network Guide**

**Thank you for purchasing this product.**

This manual is intended to explain only the network function.  
For proper use of this product, please refer to this manual and the other manuals for this product.

**⚠ WARNING** ▶ Before using this product, be sure to read all manuals for this product. After reading them, store them in a safe place for future reference.

**Features**

This projector has the network function that brings you the following main features.

- ✓ **Network Presentation** : allows the projector to project computer images transmitted through a network. (15)
- ✓ **Web Control** : allows you to monitor and control the projector through a network from a computer. (16)
- ✓ **My Image** : allows the projector to store up to four still images and project them. (50)
- ✓ **Messenger** : allows the projector to display text sent from a computer through a network. (51)
- ✓ **Network Bridge** : allows you to control an external device through the projector from a computer. (52)

**NOTE** • The information in this manual is subject to change without notice.  
 • The manufacturer assumes no responsibility for any errors that may appear in this manual.  
 • The reproduction, transfer or copy of all or any part of this document is not permitted without express written consent.

**Trademark acknowledgment**

- Microsoft®, Internet Explorer®, Windows®, Windows Vista® and Aero® are registered trademarks of Microsoft Corporation in the U.S. and/or other countries.
  - Adobe® and Flash® are registered trademarks of Adobe Systems Incorporated.
  - Pentium® is a registered trademark of Intel Corporation.
  - JavaScript® is a registered trademark of Sun Microsystems, Inc.
  - HDMI™, the HDMI logo and High-Definition Multimedia Interface are trademarks or registered trademarks of HDMI Licensing LLC in the United States and other countries.
  - Crestron®, Crestron e-Control®, e-Control®, Crestron RoomView® and RoomView™ are trademarks or registered trademarks of Crestron Electronics, Inc. in the United States and other countries.
  - Trademark PJLink is a trademark applied for trademark rights in Japan, the United States of America and other countries and areas.
- All other trademarks are the properties of their respective owners.



## Contents



<b>Caution</b> .....	<b>4</b>
<b>1. Connection to the network</b> .....	<b>5</b>
1.1 System requirements .....	5
1.1.1 Required equipment preparation .....	5
1.1.2 Hardware and software requirement for computer .....	5
1.2 Quick connection .....	6
1.3 Manual network connection setting - Wired LAN - .....	7
1.3.1 Equipments connection .....	7
1.3.2 Network settings .....	7
1.3.3 "Internet Option" setting .....	10
1.4 Manual network connection setting - Wireless LAN - .....	11
1.4.1 Preparation for wireless LAN connection .....	11
1.4.2 Wireless LAN connection set up .....	12
<b>2. Network Presentation</b> .....	<b>15</b>
<b>3. Web Control</b> .....	<b>16</b>
3.1 Projector Web Control .....	17
3.1.1 Logon .....	17
3.1.2 Network Information .....	18
3.1.3 Network Settings .....	19
3.1.4 Port Settings .....	22
3.1.5 Mail Settings .....	24
3.1.6 Alert Settings .....	25
3.1.7 Schedule Settings .....	27
3.1.8 Date/Time Settings .....	30
3.1.9 Security Settings .....	32
3.1.10 Projector Control .....	33
3.1.11 Remote Control .....	39
3.1.12 Projector Status .....	41
3.1.13 Network Restart .....	41
3.2 Crestron e-Control® .....	42
3.2.1 Main window .....	43
3.2.2 Tools window .....	45
3.2.3 Info window .....	47
3.2.4 Help Desk window .....	48
3.2.5 Emergency Alert .....	49
<b>4. My Image Function</b> .....	<b>50</b>
<b>5. Messenger Function</b> .....	<b>51</b>

<b>6. Network Bridge Function</b> .....	<b>52</b>
6.1 Connecting devices .....	52
6.2 Communication setup .....	53
6.3 Communication port .....	53
6.4 Transmission method .....	54
6.4.1 HALF-DUPLEX .....	54
6.4.2 FULL-DUPLEX .....	55
<b>7. Other Functions</b> .....	<b>56</b>
7.1 E-mail Alerts .....	56
7.2 Projector Management using SNMP .....	58
7.3 Event Scheduling .....	59
7.4 Command Control via the Network .....	62
7.5 Crestron RoomView® .....	67
<b>8. Troubleshooting</b> .....	<b>68</b>
<b>9. Specifications</b> .....	<b>69</b>
<b>10. Warranty and after-sales service</b> .....	<b>70</b>

**Caution****Caution**

To use the wireless network function of this projector, the designated USB wireless adapter that is sold as an option is required. For precautions according to the standards and laws, refer to the documents that come with the adapter.

**[Restriction on plugging and unplugging the USB wireless adapter]**

Before you insert or pull out the USB wireless adapter from the projector, turn off the power of the projector and pull out the power cord's plug from the outlet. Do not touch the USB wireless adapter that is connected to the projector while the projector is receiving AC power.

Do not use any extension cable or device when connecting the adapter to the projector.

**[Security precautions when using wireless LAN]**

It is recommended that security settings, such as SSID and ENCRYPTION, are specified when using wireless LAN communication. If the security settings are not specified, the contents may be intercepted or it may cause unauthorized access to the system. For details on wireless LAN security settings, refer to **3.1 Projector Web Control** or **NETWORK menu** in the **Operating Guide**.

**⚠ CAUTION** ▶ The optional IEEE802.11b/g/n USB wireless adapter uses the 2.4GHz radio frequency band. You do not need a radio license to use the adapter, but you should be aware of the following:

- DO NOT USE NEAR THE FOLLOWING!
  - Microwave ovens
  - Industrial, scientific or medical devices
  - Designated low power radio stations
  - Premises radio stations

Using the USB wireless adapter near the above may cause radio interference, which would result in a decrease in transmission speed or interruption, and even lead to malfunctioning of devices such as pacemakers.

- Depending on the location where the USB wireless adapter is used, radio wave interference may occur, which may result in a decrease in transmission speed or interruption in communication. In particular, please be aware that using the USB wireless adapter at locations where there is reinforced steel, other types of metals or concrete is likely to cause radio wave interference.
- Available Channels  
The USB wireless adapter uses the 2.4GHz radio frequency band, but depending on the country or region you are in, the channels that you can use might be limited. Please consult your dealer for information on the usable channels.
- Bringing the optional USB wireless adapter out of the country or region you reside in and using it there could lead to a violation of the radio laws of that country or region.

## 1. Connection to the network

### 1.1 System requirements

#### 1.1.1 Required equipment preparation

The following equipments are required to connect the projector to your computer through the network.

■ **Common** The projector: 1 unit, Computer : minimum 1 set

■ **Depending on how you want to connect**

- 1) For the wired connection **\*1**  
LAN cable (CAT-5 or greater): 1 piece
- 2) For the wireless connection **\*2**
  - Projector side  
IEEE802.11b/g/n USB wireless adapter (option) : 1 unit
  - Computer side  
IEEE802.11 b/g/n wireless LAN equipment: 1 unit for each **\*3**

**\*1:** The system for using the network function of the projector requires communication environment conforming 100Base-TX or 10Base-T.

**\*2:** An access point is required when the wireless LAN connection is used as Infrastructure mode.

**\*3:** Depending on the type of wireless network device and computer you are using, the projector may not be able to communicate properly with your computer, even if the computer is equipped with a built-in wireless LAN function. To eliminate communication problems, please use a Wi-Fi certified wireless network device.

#### 1.1.2 Hardware and software requirement for computer

To connect your computer to the projector and use the network function of the projector, your computer needs to meet the following requirements.

- ✓ **OS:** One of the following.  
Windows® XP Home Edition /Professional Edition  
Windows Vista® Home Basic /Home Premium /Business /Ultimate /Enterprise  
Windows® 7 Starter /Home Basic /Home Premium /Professional /Ultimate / Enterprise
- ✓ **CPU:** Pentium 4 (2.8 GHz or higher)
- ✓ **Graphic card:** 16 bit, XGA or higher  
\* When using the “LiveViewer” it is recommended that the display resolution of your computer is set to 1024 x 768.
- ✓ **Memory:** 512 MB or higher
- ✓ **Hard disk space:** 100 MB or higher
- ✓ **Web browser:** Internet Explorer® 6.0 or higher
- ✓ **CD-ROM/DVD-ROM drive**

## 1. Connection to the network

### 1.1 System requirements (continued)

**NOTE** • The network communication control is disabled while the projector is in standby mode if the STANDBY MODE item is set to SAVING. Please connect the network communication to the projector after setting the STANDBY MODE to NORMAL. (📖 **SETUP** menu in the **Operating Guide**)

- You can get the latest version of the applications for the network functions of the projector and the latest information for this product from the website. (<http://www.christiedigital.com>)

### 1.2 Quick connection

The “LiveViewer” supports very quick and simple connection to the network. When making use of the network function, it is recommended that you install the “LiveViewer” on your computer. For details, refer to the manual for “LiveViewer”.

In case you don’t want to use the “LiveViewer” or you cannot use it by some reason, proceed to the manual setting, the item 1.3 for the wired LAN (📖 **7**) and the item 1.4 for the wireless LAN. (📖 **11**)



## 1.3 Manual network connection setting - Wired LAN -

This section explains how to set it up manually.

### 1.3.1 Equipments connection

Connect the projector and a computer with a LAN cable.

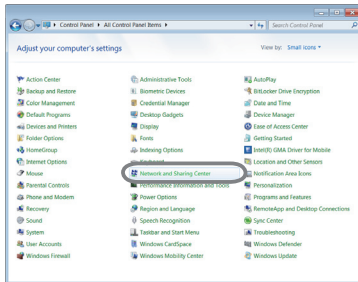
\* Before connecting with an existing network, contact the network administrator.

Next, check the following computer settings.

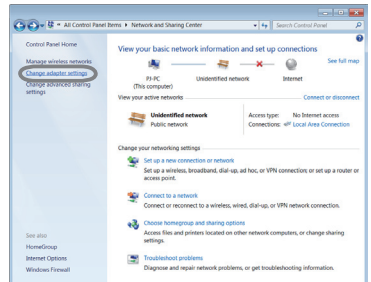
### 1.3.2 Network settings

This is the explanation of network connection settings for Windows® 7 and Internet Explorer.

- 1) Log on to Windows® 7 as administrator authority. Administrator authority is the account, which can access to all functions.
- 2) Open "Control Panel" from "Start" menu.
- 3) Open "View network status and tasks" in "Network and Internet".  
With the icons in the "Control Panel" window displayed, click "Network and Sharing Center" ..



- 4) Click "Change adapter settings" in the menu on the left side of the "Network and Sharing Center" window.

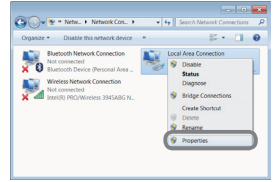


(continued on next page)

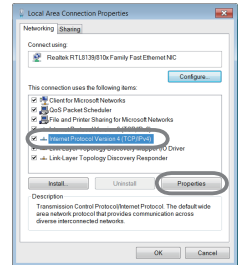
## 1. Connection to the network

### 1.3 Manual network connection setting - Wired LAN - (continued)

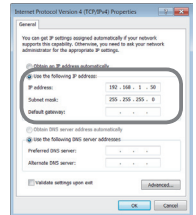
- 5) Right-click "Local Area Connection" to open the menu, and select "Properties".



- 6) Select "Internet Protocol Version 4 (TCP/IPv4)" and click [Properties].



- 7) Select "Use the following IP address" and configure the IP address, Subnet mask and Default gateway for the computer accordingly. If a DHCP server exists in the network, you can select "Obtain an IP address automatically" and the IP address will be assigned automatically. After setting is complete, click [OK] to close the window.



(continued on next page)

**1.3 Manual network connection setting - Wired LAN - (continued)**

**[About IP address]**

**■ Setting manually**

The Network address portion of the IP address setting on your computer must be the same as the setting on the projector. Also, the entire IP address on the computer must not overlap with that of the other devices on the same network, including the projector.

For example

The projector’s settings are as follows.

IP address: 192.168.1.254  
 Subnet mask: 255.255.255.0  
 (Network address: 192.168.1 in this case)

Therefore, specify the computer’s IP address as follows.

IP address: 192.168.1.xxx (xxx shows decimal number.)  
 Subnet mask: 255.255.255.0  
 (Network address: 192.168.1 in this case)

Select from 1 to 254 for “xxx” not duplicating with any other equipments. In this case, since the IP address of the projector is “192.168.1.254”, specify a setting between 1 to 253 for the computer.

**NOTE** • “0.0.0.0” cannot be set to the IP address.

- The projector’s IP address can be changed by using the configuration utility via a web browser. (21)
- If the projector and the computer exist in the same network (i.e., same network address), you can leave the default gateway field blank.
- When the projector and the computer exist in different networks, the default gateway must be set. Consult to the network administrator in detail.

**■ Setting automatically**

When a DHCP server exists in the connected network, it is possible to assign an IP address to the projector and computer automatically.

\* DHCP is abbreviation for “Dynamic Host Configuration Protocol” and has the function to provide necessary setting for network like IP address from server to client. A server that has DHCP function is called DHCP server.

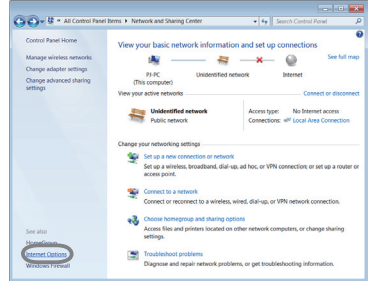
(continued on next page)

## 1. Connection to the network

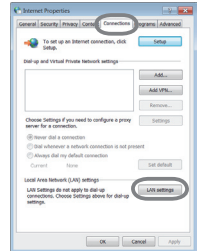
### 1.3 Manual network connection setting - Wired LAN - (continued)

#### 1.3.3 “Internet Option” setting

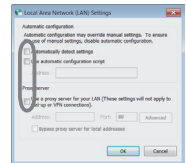
- 1) Click “Internet Options” in “Network and Sharing Center” window to open “Internet Properties” window.



- 2) Click “Connections” tab and then click [LAN settings] button to open “Local Area Network (LAN) Settings”.



- 3) Uncheck all boxes in “Local Area Network (LAN) Settings” window.  
After setting is complete, click [OK] to close the window.



## 1.4 Manual network connection setting - Wireless LAN -

Using the designated USB wireless adapter (option) on the projector enables the projector and computer to communicate in both the Ad-Hoc and Infrastructure modes.

This section is intended to explain how to set up wireless LAN connection manually.

### 1.4.1 Preparation for wireless LAN connection

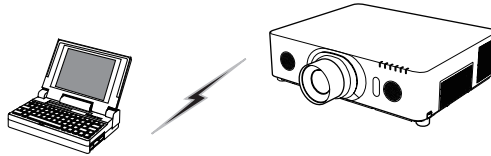


Fig. 1.4.1.a Without an access point communication (Ad-Hoc)

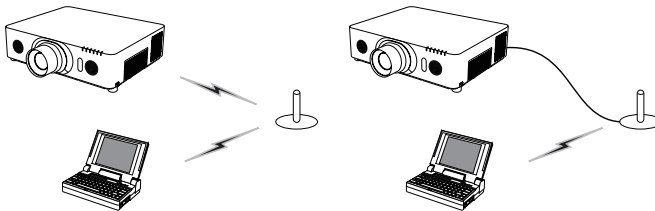


Fig. 1.4.1.b With an access point communication (Infrastructure)

- \* Ad-Hoc is one of the wireless LAN communication methods without having access point to communicate.
- \* Infrastructure is one of the wireless LAN communication methods with having access point to communicate. If certain quantities of equipments are used, this mode is efficient.  
If communicating with existing network, consult to your network administrator.

First, insert the USB wireless adapter into one of the **USB TYPE A** ports.

( **Connecting with your devices** in the **Operating Guide**)

Then, set up the computer for wireless communication.

When the computer comes with a built-in IEEE802.11b/g/n wireless LAN device, enable it and disable other network connections. If a wireless LAN device is not built into the computer, connect an IEEE802.11b/g/n wireless LAN device and install the device driver. For details, refer to the user's guide for the computer and wireless LAN device.

## 1. Connection to the network

### 1.4 Manual network connection setting - Wireless LAN - (continued)

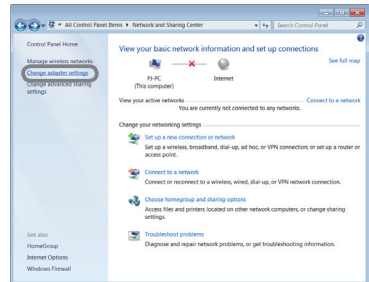
#### 1.4.2 Wireless LAN connection set up

Using wireless LAN utility for Windows® 7 standard.  
Wireless LAN initial settings for the projector is as follows.

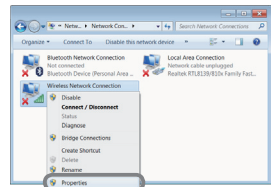
Connection Control	: Ad-Hoc
SSID	: wireless
Channel	: 1
Encryption rating	: None
IP address	: 192.168.10.254

\* You can change these settings via a web browser on your computer or from the menu of the projector. Refer to the item **3.1.3 Network Settings** (📖20) or **NETWORK** menu in the **Operating Guide**.

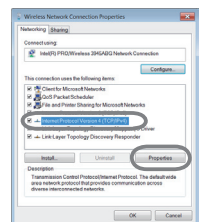
1) Select "Change adapter settings" from the menu on the left side of the "Network and Sharing Center" window.



2) Right-click "Wireless Network Connection" to open the menu, and select "Properties".



3) Select "Internet Protocol Version 4 (TCP/IPv4)" and click [Properties].

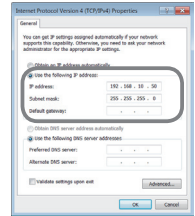


(continued on next page)

1.4 Manual network connection setting - Wireless LAN - (continued)

4) Select "Use the following IP address" and configure the IP address, Subnet mask and Default gateway for the computer accordingly.

After setting is complete, click [OK] to close the window.



[About IP address]

The Network address portion of the IP address setting on your computer must be the same as the setting on the projector. Also, the entire IP address on the computer must not overlap with that of the other devices on the same network, including the projector.

For example

The projector's settings are as follows.

- IP address: 192.168.10.254
- Subnet mask: 255.255.255.0
- (Network address: 192.168.10 in this case)

Therefore, specify the computer's IP address as follows.

- IP address: 192.168.10.xxx (xxx shows decimal number.)
- Subnet mask: 255.255.255.0
- (Network address: 192.168.10 in this case)

Select from 1 to 254 for "xxx" not duplicating with any other equipments. In this case, since the IP address of the projector is "192.168.10.254", specify a setting between 1 to 253 for the computer.

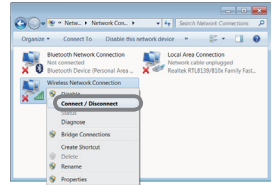
- NOTE** • "0.0.0.0" cannot be set to the IP address.
- The projector's IP address can be changed by using the configuration utility via a web browser. (20)
  - If the projector and the computer exist in the same network (i.e., same network address), you can leave the default gateway field blank.
  - When the projector and the computer exist in different networks, the default gateway must be set.

(continued on next page)

## 1. Connection to the network

### 1.4 Manual network connection setting - Wireless LAN - (continued)

- 5) Right-click "Wireless Network Connection" to open the menu, and select "Connect / Disconnect".



- 6) From the connectable wireless networks, select the SSID of the projector (set to "wireless" by default), and click [Connect]. If you have enabled encryption, a window asking for input of the encryption key will be displayed. Input the preset key.



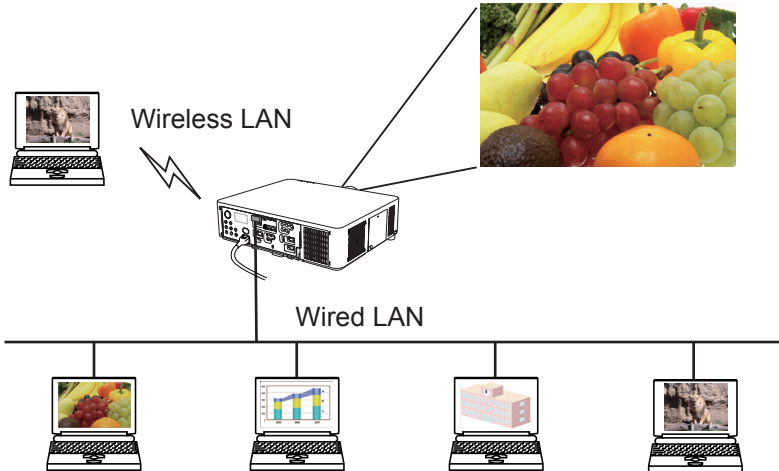
- 7) After connection is established, "Connected" will appear to the right of SSID.





## 2. Network Presentation

The projector can display or play back the computer screen images and audio data that are transmitted through the network. This Network Presentation feature helps you to smoothly make your presentations and conduct conferences.



To use Network Presentation, an exclusive application, "LiveViewer" is required. It can be installed from the bundled application CD. You can also download the latest version and relevant information from the website (<http://www.christiedigital.com>). For details of Network Presentation and instructions to install the "LiveViewer", refer to the manual for "LiveViewer".

To start the Network Presentation, select the **LAN** port as the input source on the projector and click the Starting Capture button on the "LiveViewer". "LiveViewer" function use depends on the model you are using. If you want to use the latest downloaded "LiveViewer", please refer for the appropriate group item in the "LiveViewer" User's Manual. This model will be in the Group of **B**.

**NOTE** • When the screen resolution of your computer is over specified, the computer image is shrunk in specified size as below before transferring to the projector.

**LX501, LX601i:** 1024 x 768 (XGA)

**The other models:** 1280 x 800

The transferred image is displayed as shrunk on the projected screen even if the panel resolution of the projector is larger than above. the panel resolution of the projector is larger than above.

### 3. Web Control

## 3. Web Control

You can adjust or control the projector via a network from a web browser on a computer that is connected to the same network.


**NOTE** • Internet Explorer® 6.0 or later is required.

- If JavaScript® is disabled in your web browser configuration, you must enable JavaScript® in order to use the projector web pages properly. See the Help files for your web browser for details on how to enable JavaScript®.
- It is recommended that all web browser updates are installed.
- If data is transferred via wireless and wired LAN at the same time, the projector may not be able to process the data correctly.

Refer to the following for configuring or controlling the projector via a web browser. Make sure that your computer and the projector is connected via network, and then start Web browser.

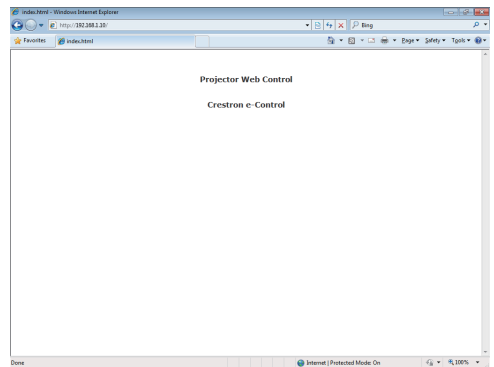
Enter the projector's IP address into URL input box of the Web browser as the example below, and then press the Enter key or  button.

**Example:** If the IP address of the projector is set to **192.168.1.10**:

Enter "**http://192.168.1.10/**" into the address bar of the web browser and press the Enter key or click  button.

If a correct URL is input, and the projector and your computer are connected to the same network correctly, the selection window as shown on the right will be displayed. You can choose to use Projector Web Control or Crestron e-Control® as a tool for controlling the projector. Click one of them.

For more details, refer to **3.1 Projector Web Control** ([17](#)) or **3.2 Crestron e-Control®** ([42](#)).



**NOTE** • Do not attempt to control the projector with the projector's menu or remote control, and via Web Control at the same time. It may cause some operational errors in the projector.

- If **Crestron e-Control** in the **Network Settings** ([21](#)) is set to Disable, the selection window above does not appear, but the Logon window of the Projector Web Control is displayed.
- Crestron e-Control® is created using Flash®. You need to install Adobe® Flash® Player on your computer to use Crestron e-Control®.

### 3.1 Projector Web Control

#### 3.1.1 Logon

To use the Projector Web Control function, you need to logon with your user name and password.

Below are the factory default settings for user name and password.

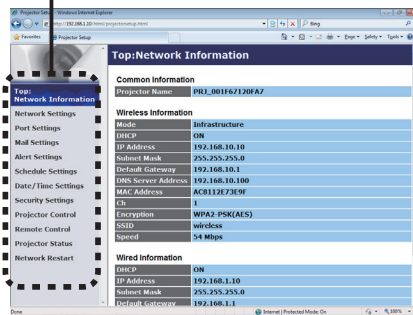
User name	Password
Administrator	<blank>



Logon window

Enter your user name and password, and then click the **[OK]**. If you logon successfully, the screen below will be displayed.

Main menu



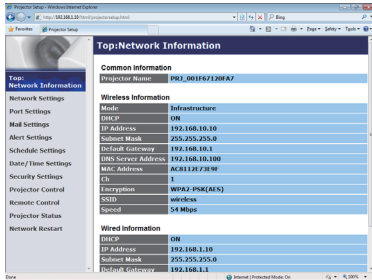
Click the desired operation or configuration item on the main menu.

**NOTE** • The language used on the Projector Web Control screen is the same as that of the OSD on the projector. If you want to change it, you need to change the OSD language on the projector. (SCREEN menu in the Operating Guide)

3. Web Control

3.1 Projector Web Control (continued)

3.1.2 Network Information

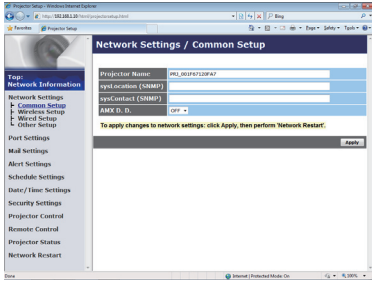


Displays the projector's current network configuration settings.

Item	Description
<b>Common Information</b>	Displays information common to both wireless and wired LAN.
<b>Projector Name</b>	Displays the projector name settings.
<b>Wireless Information</b>	Displays the current settings of wireless LAN.
<b>Mode</b>	Displays the mode of wireless LAN communication.
<b>DHCP</b>	Displays the DHCP setting.
<b>IP Address</b>	Displays the IP address.
<b>Subnet Mask</b>	Displays the subnet mask.
<b>Default Gateway</b>	Displays the default gateway.
<b>DNS Server Address</b>	Displays the DNS server address.
<b>MAC Address</b>	Displays the MAC address.
<b>Ch</b>	Displays the channel used for wireless LAN.
<b>Encryption</b>	Displays the data encryption setting.
<b>SSID</b>	Displays the SSID used by the projector.
<b>Speed</b>	Displays the current wireless LAN transmission speed.
<b>Wired Information</b>	Displays the current wired LAN settings.
<b>DHCP</b>	Displays the DHCP setting.
<b>IP Address</b>	Displays the IP address.
<b>Subnet Mask</b>	Displays the subnet mask.
<b>Default Gateway</b>	Displays the default gateway.
<b>DNS Server Address</b>	Displays the DNS server address.
<b>MAC Address</b>	Displays the MAC address.

### 3.1 Projector Web Control (continued)

#### 3.1.3 Network Settings



Displays and configures network settings.

Item	Description
<b>Common Setup</b>	Configures the settings common to wireless and wired LAN.
<b>Projector Name</b>	Configures the name of the projector. The length of the Projector Name can be up to 64 alphanumeric characters. Only alphabets, numbers and following symbols can be used. !"#\$%&'()*+,-./:;<=>@[\\]^_`{ }~ and space. Particular projector name is pre-assigned by default.
<b>sysLocation (SNMP)</b>	Configures the location to be referred to when using SNMP. The length of the sysLocation can be up to 255 alphanumeric characters. Only numbers '0-9' and alphabet 'a-z', 'A-Z' can be used.
<b>sysContact (SNMP)</b>	Configures the contact information to be referred to when using SNMP. The length of the sysContact can be up to 255 alphanumeric characters. Only numbers '0-9' and alphabet 'a-z', 'A-Z' can be used.
<b>AMX D.D. (AMX Device Discovery)</b>	Configures the AMX Device Discovery setting to detect the projector from the controllers of AMX connected to the same network. For the details of AMX Device Discovery, visit the AMX web site. <u>URL: <a href="http://www.amx.com">http://www.amx.com</a></u> (as of Jun. 2012)

(continued on next page)

### 3. Web Control

#### 3.1 Projector Web Control - Network Settings (continued)

Item	Description									
<b>Wireless Setup</b>	Configures the wireless LAN settings.									
<b>Mode</b>	Select "Ad-Hoc" or "Infrastructure".									
<b>IP Configuration</b>	Configures network settings.									
<b>DHCP ON</b>	Enables DHCP.									
<b>DHCP OFF</b>	Disables DHCP.									
<b>IP Address</b>	Configures the IP address when DHCP is disabled.									
<b>Subnet Mask</b>	Configures the subnet mask when DHCP is disabled.									
<b>Default Gateway</b>	Configures the default gateway when DHCP is disabled.									
<b>DNS Server Address</b>	Configures the DNS server address.									
<b>Ch</b>	Select from "1" to "11" a channel to use in the Ad-Hoc mode.  <div style="border: 1px solid black; padding: 5px;"> <p><b>NOTE</b> • Depending on the country where you are the channels may vary. In addition, depending on the country or region where you are may be required to use a wireless network card that confirm to the standards in the respective country or region.</p> </div>									
<b>Encryption</b>	Select data encryption method.									
<b>WEP Key</b>	Input the WEP key. Either ASCII characters or hexadecimal numbers can be used during WEP key input. However, you cannot use a combination of both. The length of the key is defined as follows according to the WEP and character formats.									
	<table border="1"> <thead> <tr> <th>Encryption</th> <th>ASCII characters</th> <th>HEX numbers</th> </tr> </thead> <tbody> <tr> <td>WEP 64bit</td> <td>5 characters</td> <td>10 characters</td> </tr> <tr> <td>WEP 128bit</td> <td>13 characters</td> <td>26 characters</td> </tr> </tbody> </table>	Encryption	ASCII characters	HEX numbers	WEP 64bit	5 characters	10 characters	WEP 128bit	13 characters	26 characters
Encryption	ASCII characters	HEX numbers								
WEP 64bit	5 characters	10 characters								
WEP 128bit	13 characters	26 characters								
<b>WPA Passphrase</b>	Input WPA Passphrase. Available number of input characters is 8 to 63. Only alphabets, numbers and following symbols can be used. !"#%&'()*+,-./:;<=>?@[ \ ] ^ _ ` { } ~ and space									
<b>SSID</b>	Select an SSID from the list. If you require to set your unique SSID, select <b>[Custom]</b> , then set your own SSID following the rules below. Maximum number of input characters is 32. Only alphabets, numbers and following symbols can be used. !"#%&'()*+,-./:;<=>?@[ \ ] ^ _ ` { } ~ and space.									

(continued on next page)

**3.1 Projector Web Control - Network Settings (continued)**

Item	Description
<b>Wired Setup</b>	Configures the wired LAN settings.
<b>IP Configuration</b>	Configures network settings.
<b>DHCP ON</b>	Enables DHCP.
<b>DHCP OFF</b>	Disables DHCP.
<b>IP Address</b>	Configures the IP address when DHCP is disabled.
<b>Subnet Mask</b>	Configures the subnet mask when DHCP is disabled.
<b>Default Gateway</b>	Configures the default gateway when DHCP is disabled.
<b>DNS Server Address</b>	Configures the DNS server address.
<b>Other Setup</b>	Configures other network settings.
<b>Crestron e-Control</b>	Set whether to or not to use Crestron e-Control®. If you choose Disable, the Logon window of Projector Web Control and not the selection window will be displayed at first of the Web Control.

Click the **[Apply]** button to save the settings.

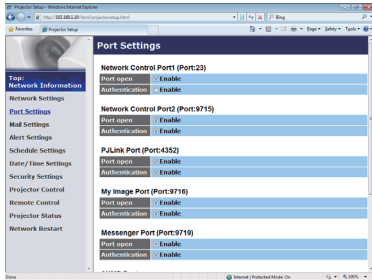
**NOTE** • The new configuration settings are activated after restarting the network connection. When the configuration settings are changed, you must restart the network connection. You can restart the network connection from **Network Restart** on the main menu (41).

- If you connect the projector to an existing network, consult a network administrator before setting server addresses.
- The WEP Key, WPA passphrase and SSID settings will not be set if the invalid characters are used.
- The projector does not allow both wireless and wired LAN to be connected to the same network. Do not set the same network address for both wireless and wired LAN.

3. Web Control

3.1 Projector Web Control (continued)

3.1.4 Port Settings



Displays and configures communication port settings.

Item	Description
<b>Network Control Port1 (Port:23)</b>	Configures command control port 1 (Port:23).
<b>Port open</b>	Click the <b>[Enable]</b> check box to use port 23.
<b>Authentication</b>	Click the <b>[Enable]</b> check box when authentication is required for this port.
<b>Network Control Port2 (Port:9715)</b>	Configures command control port 2 (Port:9715).
<b>Port open</b>	Click the <b>[Enable]</b> check box to use port 9715.
<b>Authentication</b>	Click the <b>[Enable]</b> check box when authentication is required for this port.
<b>PJLink™ Port (Port:4352)</b>	Configures the PJLink™ port (Port:4352).
<b>Port open</b>	Click the <b>[Enable]</b> check box to use port 4352.
<b>Authentication</b>	Click the <b>[Enable]</b> check box when authentication is required for this port.
<b>My Image Port (Port:9716)</b>	Configures the My Image Port (Port:9716).
<b>Port open</b>	Click the <b>[Enable]</b> check box to use port 9716.
<b>Authentication</b>	Click the <b>[Enable]</b> check box when authentication is required for this port.
<b>Messenger Port (Port:9719)</b>	Configures the Messenger Port (Port:9719).
<b>Port open</b>	Click the <b>[Enable]</b> check box to use port 9719.
<b>Authentication</b>	Click the <b>[Enable]</b> check box when authentication is required for this port.


(continued on next page)



**3.1 Projector Web Control - Port Settings (continued)**

Item	Description
<b>SNMP Port</b>	Configures the SNMP port.
<b>Port open</b>	Click the <b>[Enable]</b> check box to use SNMP.
<b>Trap address</b>	Configures the destination of the SNMP Trap in IP format. • The address allows not only IP address but also domain name if the valid DNS server is setup in the <b>Network Settings</b> . The maximum length of host or domain name is up to 255 characters.
<b>Download MIB file</b>	Downloads a MIB file from the projector.
<b>Network Bridge Port</b>	Configures the Bridge port number.
<b>Port number</b>	Input the port number. Except for 41794, 9715, 9716, 9719, 9720, 5900, 5500, 4352 between 1024 and 65535 can be set up. It is set to 9717 as the default setting.

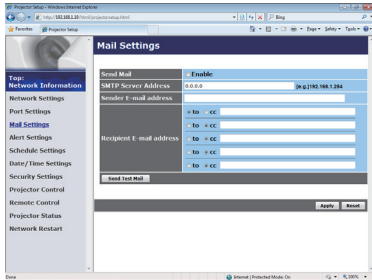
Click the **[Apply]** button to save the settings.

**NOTE** • The new configuration settings are activated after restarting the network connection. When the configuration settings are changed, you must restart the network connection. You can restart the network connection from **Network Restart** on the main menu(41).

3. Web Control

3.1 Projector Web Control (continued)

3.1.5 Mail Settings



Displays and configures e-mail addressing settings.

Item	Description
<b>Send Mail</b>	Click the <b>[Enable]</b> check box to use the e-mail function. Configure the conditions for sending e-mail under the <b>Alert Settings</b> .
<b>SMTP Server Address</b>	Configures the address of the mail server in IP format. <ul style="list-style-type: none"> <li>The address allows not only IP address but also domain name if the valid DNS server is setup in the <b>Network Settings</b>. The maximum length of host or domain name is up to 255 characters.</li> </ul>
<b>Sender E-mail address</b>	Configures the sender e-mail address. The length of the sender e-mail address can be up to 255 alphanumeric characters.
<b>Recipient E-mail address</b>	Configures the e-mail address of up to five recipients. You can also specify the <b>[to]</b> or <b>[cc]</b> for each address. The length of the recipient e-mail address can be up to 255 alphanumeric characters.

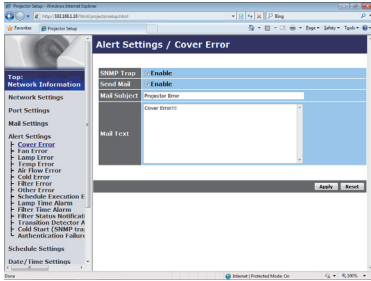
Click the **[Apply]** button to save the settings.

**NOTE** • You can confirm whether the mail settings work correctly using the **[Send Test Mail]** button. Please enable Send mail setting before clicking the **[Send Test Mail]**.

- If you connect the projector to an existing network, consult a network administrator before setting server addresses.

### 3.1 Projector Web Control (continued)

#### 3.1.6 Alert Settings



Displays and configures failure & alert settings.

Item	Description
Cover Error	The lamp cover has not been properly fixed.
Fan Error	The cooling fan is not operating.
Lamp Error	The lamp does not light, and there is a possibility that interior portion has become heated.
Temp Error	There is a possibility that the interior portion has become heated.
Air Flow Error	The internal temperature is rising.
Cold Error	There is a possibility that the interior portion has become overcooled.
Filter Error	Filter time over.
Other Error	Other error. If displaying this error, please contact your dealer.
Schedule Execution Error	Schedule Execution error. (📖27)
Lamp Time Alarm	Lamp time over Alarm Time setting.
Filter Time Alarm	Filter time over Alarm Time setting.
Filter Status Notification	The status to clean the air filter is changed.
Transition Detector Alarm	Transition Detector Alarm. (📖SECURITY menu in the Operating Guide)
Cold Start	When the projector is supplied with the power, it works as below. <ul style="list-style-type: none"> <li>• If the STANDBY MODE is set to the NORMAL:the projector's power status changes from "OFF" to "Standby state".</li> <li>• If the STANDBY MODE is set to the SAVING:the projector's power status changes from "Standby state" to "ON (lamp is turned on)".</li> </ul> (📖SETUP menu in the Operating Guide)
Authentication Failure	The SNMP access is detected from the invalid SNMP community.

Refer to 📖Troubleshooting in the **Operating Guide** for further detailed explanation of Error except Other Error and Schedule Execution Error.

## 3. Web Control

## 3.1 Projector Web Control - Alert Settings (continued)

The Alert Items are shown below.

Item	Description
<b>Alarm Time</b>	Configures the time to alert. (Only <b>Lamp Time Alarm</b> and <b>Filter Time Alarm</b> .)
<b>SNMP Trap</b>	Click the <b>[Enable]</b> check box to enable SNMP Trap alerts.
<b>Send Mail</b>	Click the <b>[Enable]</b> check box to enable e-mail alerts. (Except <b>Cold Start</b> and <b>Authentication Failure</b> .)
<b>Mail Subject</b>	Configures the subject line of the e-mail to be sent. The length of the subject line can be up to 100 alphanumeric characters. (Except <b>Cold Start</b> and <b>Authentication Failure</b> .)
<b>Mail Text</b>	Configures the text of the e-mail to be sent. The length of the text can be up to 1024 alphanumeric characters, but if you are using some of special characters below the length may be shorter. Special characters " ' : & , % \ and space (Except <b>Cold Start</b> and <b>Authentication Failure</b> .)

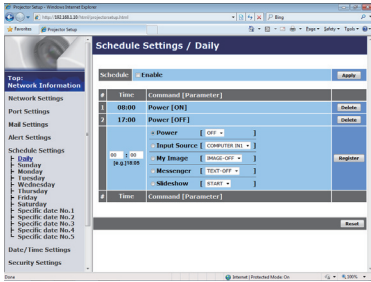
Click the **[Apply]** button to save the settings.

**NOTE** • The trigger of **Filter Error** e-mail is depending on the **FILTER MESSAGE** setting in the **SERVICE** item of the **OPTION** menu which defines the period until the filter message is displayed on the projector screen. An e-mail will be sent when the usage time of the filter exceeds the time limit that is set. No notification e-mail will be sent if the **FILTER MESSAGE** is set to **TURN OFF**. (📖 **OPTION** menu in the **Operating Guide**)

- **Lamp Time Alarm** is defined as a threshold for e-mail notification (reminder) of the lamp time. When the lamp hour exceeds the limit that is configured in the Projector Web Control, an e-mail will be sent.
- **Filter Time Alarm** is defined as a threshold for e-mail notification (reminder) of the filter time. When the filter hour exceeds the limit that is configured in the Projector Web Control, an e-mail will be sent.
- **Filter Status Notification** can be enabled for both or either one of **Status 1** and **2**. These notifications are equivalent to the changing of the **FILTER** indicator on the projector. (**Status 1**: off to orange, **Status 2**: orange to red) Refer to the **Operating Guide** for details of the **FILTER** indicator.

### 3.1 Projector Web Control (continued)

#### 3.1.7 Schedule Settings



Displays and configures schedule settings.

Item	Description
Daily	Configures the daily schedule.
Sunday	Configures the Sunday schedule.
Monday	Configures the Monday schedule.
Tuesday	Configures the Tuesday schedule.
Wednesday	Configures the Wednesday schedule.
Thursday	Configures the Thursday schedule.
Friday	Configures the Friday schedule.
Saturday	Configures the Saturday schedule.
Specific date No.1	Configures the specific date (No.1) schedule.
Specific date No.2	Configures the specific date (No.2) schedule.
Specific date No.3	Configures the specific date (No.3) schedule.
Specific date No.4	Configures the specific date (No.4) schedule.
Specific date No.5	Configures the specific date (No.5) schedule.

## 3. Web Control

## 3.1 Projector Web Control - Schedule Settings (continued)

The schedule settings are shown below.

Item	Description
<b>Schedule</b>	Click the <b>[Enable]</b> check box to enable the schedule.
<b>Date (Month/Day)</b>	Configures the month and date. This item appears only when Specific date (No. 1-5) is selected.

Click the **[Apply]** button to save the settings.

The current event settings are displayed on the schedule list. To add additional functions and events, set the following items.

Item	Description
<b>Time</b>	Configures the time to execute commands.
<b>Command [Parameter]</b>	Configures the commands to be executed.
<b>Power</b>	Configures the parameters for power control.
<b>Input Source</b>	Configures the parameters for input switching.
<b>My Image</b>	Configures the parameters for My Image data display. (50)
<b>Messenger</b>	Configures the parameters for Messenger data display. (51)
<b>Slideshow</b>	Configures the Start/Stop parameters for the Slideshow.

Click the **[Register]** button to add new commands to the schedule list.

Click the **[Delete]** button to delete commands from the schedule list.

Click the **[Reset]** button to delete all commands and reset the schedule settings from the schedule list.

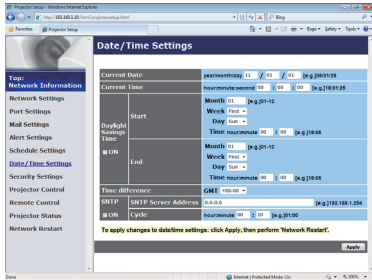
### 3.1 Projector Web Control - Schedule Settings (continued)

- NOTE** • After the projector is moved, check the date and time set for the projector before configuring the schedules.
- The internal clock's time may not remain accurate. Using SNTP is recommended to maintain accurate time.
  - Events "**My Image**" and "**Messenger**" will not be executed appropriately but result in "schedule execution error" status in case lamp does not light or/and display data are not stored in the projector at the scheduled event execution time.
  - Events "**Input Source**" and "**My Image**" will not be executed if security feature is enabled and the projector is locked due to the feature.
  - Certain error state in the projector (such as temperature error, lamp error) will prevent the projector from appropriate execution of scheduled functions/events.
  - If no USB memory device is inserted to the projector or no image data for display exists at the scheduled event time, a schedule execution error occurs against the scheduled Slideshow event.
  - When you start the Slideshow, input source will be automatically switched to the **USB TYPE A**.
  - Image files stored in the root directory of the USB memory device will be displayed for the scheduled Slideshow.
  - Please refer to [🔗](#) **Troubleshooting** in the **Operating Guide** in case scheduled functions/events are not executed appropriately as you've set.

3. Web Control

3.1 Projector Web Control (continued)

3.1.8 Date/Time Settings



Displays and configures the date and time settings.

Item	Description				
<b>Current Date</b>	Configures the current date in <b>year/month/day</b> format.				
<b>Current Time</b>	Configures the current time in <b>hour:minute:second</b> format.				
<b>Daylight Savings Time</b>	Click the <b>[ON]</b> check box to enable daylight savings time and set the following items.				
<b>Start</b>	Configures the date and time daylight savings time begins.				
<b>Month</b>	Configures the month daylight savings time begins (1~12).				
<b>Week</b>	Configures the week of the month daylight savings time begins (First, 2, 3, 4, Last).				
<b>Day</b>	Configures the day of the week daylight savings time begins (Sun, Mon, Tue, Wed, Thu, Fri, Sat).				
<b>Time</b>	<table border="1"> <tr> <td><b>hour</b></td> <td>Configures the hour daylight savings time begins (0 ~ 23).</td> </tr> <tr> <td><b>minute</b></td> <td>Configures the minute daylight savings time begins (0 ~ 59).</td> </tr> </table>	<b>hour</b>	Configures the hour daylight savings time begins (0 ~ 23).	<b>minute</b>	Configures the minute daylight savings time begins (0 ~ 59).
<b>hour</b>	Configures the hour daylight savings time begins (0 ~ 23).				
<b>minute</b>	Configures the minute daylight savings time begins (0 ~ 59).				
<b>End</b>	Configures the date and time daylight savings time ends.				
<b>Month</b>	Configures the month daylight savings time ends (1 ~ 12).				
<b>Week</b>	Configures the week of the month daylight savings time ends (First, 2, 3, 4, Last).				
<b>Day</b>	Configures the day of the week daylight savings time ends (Sun, Mon, Tue, Wed, Thu, Fri, Sat).				
<b>Time</b>	<table border="1"> <tr> <td><b>hour</b></td> <td>Configures the hour daylight savings time ends (0 ~ 23).</td> </tr> <tr> <td><b>minute</b></td> <td>Configures the minute daylight savings time ends (0 ~ 59).</td> </tr> </table>	<b>hour</b>	Configures the hour daylight savings time ends (0 ~ 23).	<b>minute</b>	Configures the minute daylight savings time ends (0 ~ 59).
<b>hour</b>	Configures the hour daylight savings time ends (0 ~ 23).				
<b>minute</b>	Configures the minute daylight savings time ends (0 ~ 59).				

(continued on next page)



**3.1 Projector Web Control - Date/Time Settings (continued)**

Item	Description
<b>Time difference</b>	Configures the time difference. Set the same time difference as the one set on your computer. If unsure, consult your IT manager.
<b>SNTP</b>	Click the [ON] check box to retrieve Date and Time information from the SNTP server and set the following items.
<b>SNTP Server Address</b>	Configures the SNTP server address in IP format. • The address allows not only IP address but also domain name if the valid DNS server is setup in the <b>Network Settings</b> . The maximum length of host or domain name is up to 255 characters.
<b>Cycle</b>	Configures the interval at which to retrieve Date and Time information from the SNTP server ( <b>hour:minute</b> ).

Click the **[Apply]** button to save the settings.

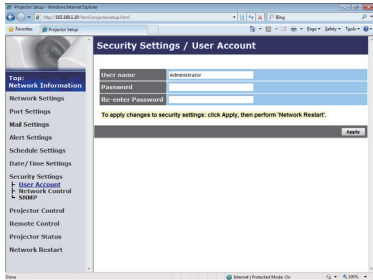
**NOTE** • The new configuration settings are activated after restarting the network connection. When the configuration settings are changed, you must restart the network connection. You can restart the network connection from **Network Restart** on the main menu(🔗41).

- If you connect the projector to an existing network, consult a network administrator before setting server addresses.
- Once you turn off the projector in the SAVING mode (🔗SETUP menu in the **Operating Guide**) or the AC power, the current date and time setting is reset.
- To enable the SNTP function, the time difference must be set.
- The projector will retrieve Date and Time information from the time server and override time settings when SNTP is enabled.
- The internal clock's time may not remain accurate. Using SNTP is recommended to maintain accurate time.

**3. Web Control**

**3.1 Projector Web Control (continued)**

**3.1.9 Security Settings**



Displays and configures passwords and other security settings.

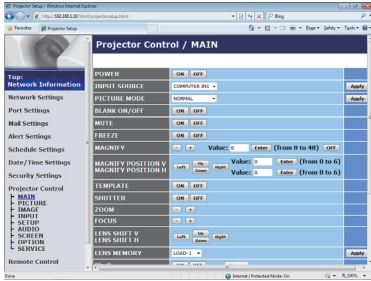
Item	Description
<b>User Account</b>	Configures the user name and password.
<b>User name</b>	Configures the user name. The length of the text can be up to 32 alphanumeric characters.
<b>Password</b>	Configures the password. The length of the text can be up to 255 alphanumeric characters.
<b>Re-enter Password</b>	Reenter the above password for verification.
<b>Network Control</b>	Configures the Authentication password for <b>Network Control Port1 (Port: 23), Network Control Port2 (Port: 9715), PJLink™ Port (Port: 4352), My Image Port (Port: 9716), and Messenger Port (Port: 9719) (🔗22, 23)</b> .
<b>Authentication Password</b>	Configures the Authentication password. The length of the text can be up to 32 alphanumeric characters.
<b>Re-enter Authentication Password</b>	Reenter the above password for verification.
<b>SNMP</b>	Configures the community name if SNMP is used.
<b>Community name</b>	Configures the community name. The length of the text can be up to 64 alphanumeric characters.

Click the **[Apply]** button to save the settings.

**NOTE** • The new configuration settings are activated after restarting the network connection. When the configuration settings are changed, you must restart the network connection. You can restart the network connection from **Network Restart** on the main menu (🔗41).  
 • Only numbers '0-9' and alphabet 'a-z', 'A-Z' can be used.

### 3.1 Projector Web Control (continued)

#### 3.1.10 Projector Control



Operations of the projector can be performed with the items on the screen. The categories of the items are shown in the main menu. Most of the items have a submenu. Refer to the table below for details.

**NOTE** • The setting value may not match with the actual value if the user changes the value manually. In that case, please refresh the page by clicking the **[Refresh]** button.

Item	Description
<b>MAIN</b>	
<b>POWER</b>	Turns the power on/off.
<b>INPUT SOURCE</b>	Selects the input source.
<b>PICTURE MODE</b>	Selects the picture mode setting.
<b>BLANK ON/OFF</b>	Turns the BLANK screen on/off.
<b>MUTE</b>	Turns the audio mute on/off.
<b>FREEZE</b>	Turns Freeze on/off.
<b>MAGNIFY</b>	Controls the magnify setting. In some input signal sources, it might stop “Magnify” even though it does not reach to maximum setting value.
<b>MAGNIFY POSITION V</b>	Adjusts the vertical magnify position.
<b>MAGNIFY POSITION H</b>	Adjusts the horizontal magnify position.
<b>TEMPLATE</b>	Turns template on/off.
<b>SHUTTER</b>	Turns the lens shutter on(closed)/off(opened).
<b>ZOOM</b>	Adjusts the zoom setting.
<b>FOCUS</b>	Adjusts the focus setting.
<b>LENS SHIFT V</b>	Adjusts the vertical lens shift.
<b>LENS SHIFT H</b>	Adjusts the horizontal lens shift.
<b>LENS MEMORY</b>	Saves, Loads or Clears the lens memory data.
<b>PbyP *</b>	Turns PbyP mode on/off.
<b>PbyP LEFT SOURCE *</b>	Selects the PbyP left side area signal source.
<b>PbyP RIGHT SOURCE *</b>	Selects the PbyP right side area signal source.
<b>PbyP MAIN AREA *</b>	Selects the PbyP main area position.
<b>MY IMAGE</b>	Selects MY IMAGE data.
<b>MY IMAGE DELETE</b>	Deletes MY IMAGE data.

\* <Only for LW401, LW551i, LWU421 and LWU501i>

(continued on next page)

## 3. Web Control

## 3.1 Projector Web Control - Projector Control (continued)

Item	Description
<b>PICTURE</b>	
<b>BRIGHTNESS</b>	Adjusts the brightness setting.
<b>CONTRAST</b>	Adjusts the contrast setting.
<b>GAMMA</b>	Selects the gamma setting.
<b>COLOR TEMP</b>	Selects the color temperature setting.
<b>COLOR</b>	Adjusts the color setting.
<b>TINT</b>	Adjusts the tint setting.
<b>SHARPNESS</b>	Adjusts the sharpness setting.
<b>ACTIVE IRIS</b>	Selects the active iris setting.
<b>MYMEMORY SAVE</b>	Saves the MyMemory data.
<b>MYMEMORY RECALL</b>	Recalls the MyMemory data.
<b>IMAGE</b>	
<b>ASPECT</b>	Selects the aspect setting.
<b>OVER SCAN</b>	Adjusts the over scan setting.
<b>V POSITION</b>	Adjusts the vertical position.
<b>H POSITION</b>	Adjusts the horizontal position.
<b>H PHASE</b>	Adjusts the horizontal phase.
<b>H SIZE</b>	Adjusts the horizontal size.
<b>AUTO ADJUST EXECUTE</b>	Performs the automatic adjustment.
<b>INPUT</b>	
<b>PROGRESSIVE</b>	Selects the progressive setting.
<b>VIDEO NR</b>	Selects the video noise reduction setting.
<b>COLOR SPACE</b>	Selects the color space.
<b>COMPONENT</b>	Selects the <b>COMPONENT</b> port setting.
<b>VIDEO FORMAT - S-VIDEO</b>	Selects the s-video format setting.
<b>VIDEO FORMAT - VIDEO</b>	Selects the video format setting.
<b>HDMI FORMAT - HDMI 1</b>	Selects the HDMI™ format setting of the <b>HDMI 1</b> port.
<b>HDMI FORMAT - HDMI 2</b>	Selects the HDMI™ format setting of the <b>HDMI 2</b> port.
<b>HDMI RANGE - HDMI 1</b>	Selects the HDMI™ range setting of the <b>HDMI 1</b> port.
<b>HDMI RANGE - HDMI 2</b>	Selects the HDMI™ range setting of the <b>HDMI 2</b> port.

(continued on next page)

**3.1 Projector Web Control - Projector Control (continued)**

Item	Description
<b>INPUT (continued)</b>	
<b>COMPUTER IN - COMPUTER IN1</b>	Selects the COMPUTER IN1 input signal type.
<b>COMPUTER IN - COMPUTER IN2</b>	Selects the COMPUTER IN2 input signal type.
<b>FRAME LOCK - COMPUTER IN1</b>	Turns the FRAME LOCK-COMPUTER IN1 function on/off.
<b>FRAME LOCK - COMPUTER IN2</b>	Turns the FRAME LOCK-COMPUTER IN2 function on/off.
<b>FRAME LOCK - HDMI 1</b>	Turns the FRAME LOCK-HDMI 1 function on/off.
<b>FRAME LOCK - HDMI 2</b>	Turns the FRAME LOCK-HDMI 2 function on/off.
<b>SETUP</b>	
<b>AUTO KEYSTONE EXECUTE</b>	Performs the automatic keystone distortion setting.
<b>KEYSTONE V</b>	Adjusts the vertical keystone distortion setting.
<b>KEYSTONE H</b>	Adjusts the horizontal keystone distortion setting.
<b>PERFECT FIT</b>	Adjusts the shape of the projected image in each of the corners and sides.
<b>AUTO ECO MODE</b>	Turns on/off the automatic eco mode function.
<b>ECO MODE</b>	Selects the eco mode.
<b>INSTALLATION</b>	Selects the installation status.
<b>STANDBY MODE</b>	Selects the standby mode.
<b>MONITOR OUT - COMPUTER IN1</b>	Assigns the <b>MONITOR OUT</b> when the <b>COMPUTER IN1</b> input port is selected.
<b>MONITOR OUT - COMPUTER IN2</b>	Assigns the <b>MONITOR OUT</b> when the <b>COMPUTER IN2</b> input port is selected.
<b>MONITOR OUT - LAN</b>	Assigns the <b>MONITOR OUT</b> when the <b>LAN</b> input port is selected.
<b>MONITOR OUT - USB TYPE A</b>	Assigns the <b>MONITOR OUT</b> when the <b>USB TYPE A</b> input port is selected.
<b>MONITOR OUT - USB TYPE B</b>	Assigns the <b>MONITOR OUT</b> when the <b>USB TYPE B</b> input port is selected.
<b>MONITOR OUT - HDMI 1</b>	Assigns the <b>MONITOR OUT</b> when the <b>HDMI 1</b> input port is selected.
<b>MONITOR OUT - HDMI 2</b>	Assigns the <b>MONITOR OUT</b> when the <b>HDMI 2</b> input port is selected.
<b>MONITOR OUT - COMPONENT</b>	Assigns the <b>MONITOR OUT</b> when the <b>COMPONENT</b> input port is selected.
<b>MONITOR OUT - S-VIDEO</b>	Assigns the <b>MONITOR OUT</b> when the <b>S-VIDEO</b> input port is selected.
<b>MONITOR OUT - VIDEO</b>	Assigns the <b>MONITOR OUT</b> when the <b>VIDEO</b> input port is selected.
<b>MONITOR OUT - STANDBY</b>	Assigns the <b>MONITOR OUT</b> in the standby mode.

(continued on next page)

### 3. Web Control

#### 3.1 Projector Web Control - Projector Control (continued)

Item	Description
<b>AUDIO</b>	
<b>VOLUME</b>	Adjusts the volume setting.
<b>SPEAKER</b>	Turns the built-in speaker on/off.
<b>AUDIO SOURCE - COMPUTER IN1</b>	Assigns the AUDIO SOURCE - <b>COMPUTER IN1</b> input port.
<b>AUDIO SOURCE - COMPUTER IN2</b>	Assigns the AUDIO SOURCE - <b>COMPUTER IN2</b> input port.
<b>AUDIO SOURCE - LAN</b>	Assigns the AUDIO SOURCE - <b>LAN</b> input port.
<b>AUDIO SOURCE - USB TYPE A</b>	Assigns the AUDIO SOURCE - <b>USB TYPE A</b> input port.
<b>AUDIO SOURCE - USB TYPE B</b>	Assigns the AUDIO SOURCE - <b>USB TYPE B</b> input port.
<b>AUDIO SOURCE - HDMI 1</b>	Assigns the AUDIO SOURCE - <b>HDMI 1</b> input port.
<b>AUDIO SOURCE - HDMI 2</b>	Assigns the AUDIO SOURCE - <b>HDMI 2</b> input port.
<b>AUDIO SOURCE - COMPONENT</b>	Assigns the AUDIO SOURCE - <b>COMPONENT</b> input port.
<b>AUDIO SOURCE - S-VIDEO</b>	Assigns the AUDIO SOURCE - <b>S-VIDEO</b> input port.
<b>AUDIO SOURCE - VIDEO</b>	Assigns the AUDIO SOURCE - <b>VIDEO</b> input port.
<b>AUDIO SOURCE - AUDIO OUT STANDBY</b>	Assigns the AUDIO SOURCE in the standby mode.
<b>HDMI AUDIO - HDMI 1</b>	Selects the HDMI™ audio setting of the <b>HDMI 1</b> port.
<b>HDMI AUDIO - HDMI 2</b>	Selects the HDMI™ audio setting of the <b>HDMI 2</b> port.
<b>SCREEN</b>	
<b>LANGUAGE</b>	Selects the language for the OSD.
<b>MENU POSITION V</b>	Adjusts the vertical Menu position.
<b>MENU POSITION H</b>	Adjusts the horizontal Menu position.
<b>BLANK</b>	Selects the BLANK screen.
<b>START UP</b>	Selects the start up screen mode.
<b>MyScreen Lock</b>	Turns MyScreen lock function on/off.
<b>MESSAGE</b>	Turns the message function on/off.
<b>TEMPLATE</b>	Selects the template setting.
<b>C.C. - DISPLAY</b>	Selects Closed Caption DISPLAY setting.
<b>C.C. - MODE</b>	Selects Closed Caption MODE setting.
<b>C.C. - CHANNEL</b>	Selects Closed Caption CHANNEL setting.

(continued on next page)

**3.1 Projector Web Control - Projector Control (continued)**

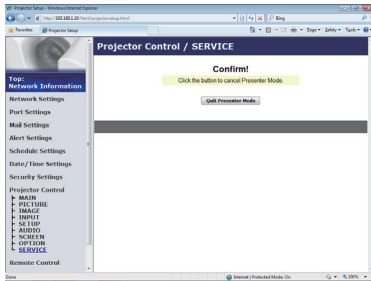
Item	Description
<b>OPTION</b>	
<b>SOURCE SKIP - COMPUTER IN1</b>	Selects the Source Skip - COMPUTER IN1 setting.
<b>SOURCE SKIP - COMPUTER IN2</b>	Selects the Source Skip - COMPUTER IN2 setting.
<b>SOURCE SKIP - LAN</b>	Selects the Source Skip - LAN setting.
<b>SOURCE SKIP - USB TYPE A</b>	Selects the Source Skip - USB TYPE A setting.
<b>SOURCE SKIP - USB TYPE B</b>	Selects the Source Skip - USB TYPE B setting.
<b>SOURCE SKIP - HDMI 1</b>	Selects the Source Skip - HDMI 1 setting.
<b>SOURCE SKIP - HDMI 2</b>	Selects the Source Skip - HDMI 2 setting.
<b>SOURCE SKIP - COMPONENT</b>	Selects the Source Skip - COMPONENT setting.
<b>SOURCE SKIP - S-VIDEO</b>	Selects the Source Skip - S-VIDEO setting.
<b>SOURCE SKIP - VIDEO</b>	Selects the Source Skip - VIDEO setting.
<b>AUTO SEARCH</b>	Turns the automatic signal search function on/off.
<b>AUTO KEYSTONE</b>	Turns the automatic keystone distortion correction function on/off.
<b>DIRECT POWER ON</b>	Turns the direct power on function on/off.
<b>AUTO POWER OFF</b>	Configures the timer to shut off the projector when no signal is detected.
<b>SHUTTER TIMER</b>	Selects the shutter timer setting.
<b>USB TYPE B</b>	Selects the USB TYPE B setting.
<b>MY BUTTON-1</b>	Assigns the functions for the <b>MY BUTTON-1</b> button on the included remote control.
<b>MY BUTTON-2</b>	Assigns the functions for the <b>MY BUTTON-2</b> button on the included remote control.
<b>MY BUTTON-3</b>	Assigns the functions for the <b>MY BUTTON-3</b> button on the included remote control.
<b>MY BUTTON-4</b>	Assigns the functions for the <b>MY BUTTON-4</b> button on the included remote control.

(continued on next page)

### 3. Web Control

#### 3.1 Projector Web Control - Projector Control (continued)

Item	Description
<b>OPTION (continued)</b>	
<b>REMOTE RECEIV. - FRONT</b>	Turns the remote receiv. front function on/off.
<b>REMOTE RECEIV. - REAR</b>	Turns the remote receiv. rear function on/off.
<b>REMOTE FREQ. - NORMAL</b>	Turns the remote control signal frequency normal function on/off.
<b>REMOTE FREQ. - HIGH</b>	Turns the remote control signal frequency high function on/off.
<b>REMOTE ID</b>	Selects Remote ID setting.



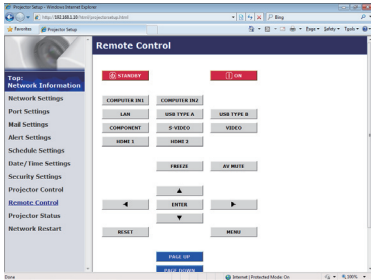
This item is performed when the button is clicked without showing another confirmation message. Click the **[Quit Presenter Mode]**.

Item	Description
<b>SERVICE</b>	
<b>Quit Presenter Mode</b>	Quit compulsorily from the Presenter mode.



### 3.1 Projector Web Control (continued)

#### 3.1.11 Remote Control



The functions on the bundled remote control are assigned to the Web Remote Control screen.

Do not attempt to control the projector with the projector's remote control and via Web Remote Control at the same time. It may cause some operational errors in the projector.

Item	Description
<b>STANDBY</b>	Assigned the same operation as <b>STANDBY</b> button.
<b>ON</b>	Assigned the same operation as <b>ON</b> button.
<b>COMPUTER IN1</b>	Assigned the same operation as <b>COMPUTER IN1</b> button.
<b>COMPUTER IN2</b>	Assigned the same operation as <b>COMPUTER IN2</b> button.
<b>LAN</b>	Assigned the same operation as <b>LAN</b> button.
<b>USB TYPE A</b>	Assigned the same operation as <b>USB TYPE A</b> button.
<b>USB TYPE B</b>	Assigned the same operation as <b>USB TYPE B</b> button.
<b>COMPONENT</b>	Assigned the same operation as <b>COMPONENT</b> button.
<b>S-VIDEO</b>	Assigned the same operation as <b>S-VIDEO</b> button.
<b>VIDEO</b>	Assigned the same operation as <b>VIDEO</b> button.
<b>HDMI 1</b>	Assigned the same operation as <b>HDMI 1</b> button.
<b>HDMI 2</b>	Assigned the same operation as <b>HDMI 2</b> button.
<b>FREEZE</b>	Assigned the same operation as <b>FREEZE</b> button.
<b>AV MUTE</b>	Assigned the same operation as <b>AV MUTE</b> button.
<b>▲</b>	Assigned the same operation as <b>▲</b> button.
<b>▼</b>	Assigned the same operation as <b>▼</b> button.
<b>◀</b>	Assigned the same operation as <b>◀</b> button.
<b>▶</b>	Assigned the same operation as <b>▶</b> button.
<b>ENTER</b>	Assigned the same operation as <b>ENTER</b> button.
<b>MENU</b>	Assigned the same operation as <b>MENU</b> button.
<b>RESET</b>	Assigned the same operation as <b>RESET</b> button.
<b>PAGE UP</b>	Assigned the same operation as <b>PAGE UP</b> button.
<b>PAGE DOWN</b>	Assigned the same operation as <b>PAGE DOWN</b> button.
<b>SLIDESHOW</b>	Starts the Slideshow.

(continued on next page)

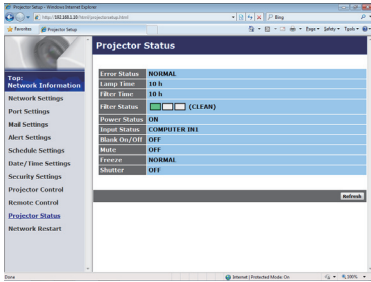
### 3. Web Control

#### 3.1 Projector Web Control - Remote Control (continued)

- NOTE** • The Web Remote Control does not support repeat function that performs an action while holding a button clicked down.
- Since the repeat function is not available, click the button repeatedly as many times as you require.
  - Even if you hold the button clicked down for a while, the Web Remote Control sends your request command one time only. Release the button, then click it again.
  - When the **[STANDBY]** or **[ON]** button is pushed, a message window comes up to confirm the operation. To control the power, push **[OK]**, otherwise push **[Cancel]**.

### 3.1 Projector Web Control (continued)

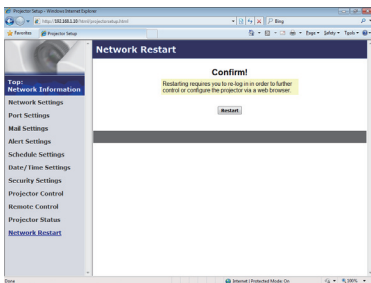
#### 3.1.12 Projector Status



Displays the settings and status of the projector.

Item	Description
<b>Error Status</b>	Displays the current error status
<b>Lamp Time</b>	Displays the usage time for the current lamp.
<b>Filter Time</b>	Displays the usage time for the current filter.
<b>Filter Status</b>	Displays the current cleanliness level of the air filter.
<b>Power Status</b>	Displays the current power status.
<b>Input Status</b>	Displays the current input signal source.
<b>Blank On/Off</b>	Displays the current BLANK screen on/off status.
<b>Mute</b>	Displays the current audio mute on/off status.
<b>Freeze</b>	Displays the current Freeze status.
<b>Shutter</b>	Displays the current Shutter status.

#### 3.1.13 Network Restart



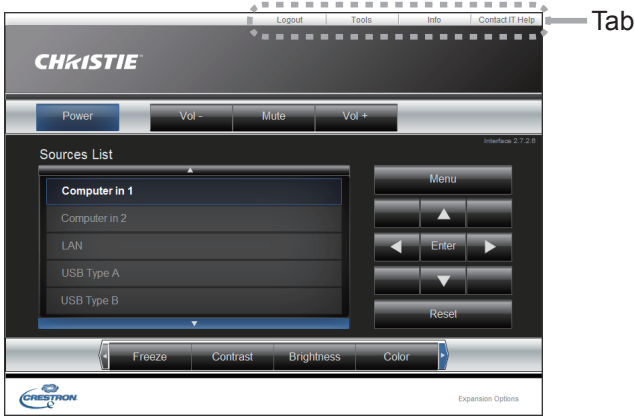
Restarts the projector's network connection.

Item	Description
<b>Restart</b>	Restarts the projector's network connection in order to activate new configuration settings.

**NOTE** • Restarting requires you to re-log on in order to further control or configure the projector via a web browser. Wait 30 seconds or more after clicking the **[Restart]** button to log on again.

3. Web Control

### 3.2 Crestron e-Control®



The Main window as shown above is displayed at first. However, if you have enabled User Password on the Tools window (46), a dialog prompting you to enter the password as shown on the right will be displayed, and no operation is enabled until you have entered the password. After entering the preset password, the dialog disappears and the Main window will be displayed. As shown below, you can open a window by clicking the corresponding tab at the top right of the window.



User Password dialog

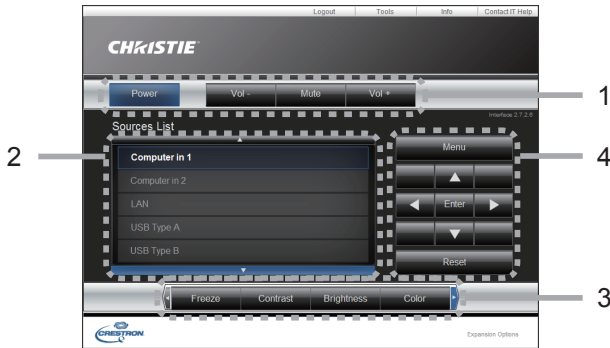
Tab	Description
<b>Logout</b>	Logs out from e-Control®. This tab appears only when User Password of the Tools window is enabled.
<b>Tools</b>	Opens Tools window (45).
<b>Info</b>	Opens Info window (47).
<b>Contact IT Help</b>	Opens Help Desk window (48).

**NOTE** • If Crestron e-Control in the **Network Settings** (21) is set to **Disable**, Crestron e-Control® cannot be used to operate the projector. Enable Crestron e-Control and close the web browser. Next, restart the web browser, followed by entering the projector's IP address.

- Only English is supported on Crestron e-Control®.
- If the connection is terminated, the "Loading..." screen will appear. Check the connection between the projector and the computer, then return or refresh the Web page.

### 3.2 Crestron e-Control® (continued)

#### 3.2.1 Main window



You can operate the basic controls of the projector on this screen.

**NOTE** • If the projector is in the standby mode, only the **[Power]** button can be operated.

1 Click a button and operate as follows.

Button	Description
<b>Power</b>	Turns the power on/off.
<b>Vol - / Vol +</b>	Adjusts the volume setting.
<b>Mute</b>	Turns the audio mute on/off.

#### 2 Sources List

You can click a button to switch the input channel. The cursor will move according to the currently selected input port.

Button	Description
<b>Computer in1</b>	Selects input from <b>COMPUTER IN1</b> port.
<b>Computer in2</b>	Selects input from <b>COMPUTER IN2</b> port.
<b>LAN</b>	Selects input from <b>LAN</b> port.
<b>USB Type A</b>	Selects input from <b>USB TYPE A</b> ports.
<b>USB Type B</b>	Selects input from <b>USB TYPE B</b> port.
<b>HDMI 1</b>	Selects input from <b>HDMI 1</b> port.
<b>HDMI 2</b>	Selects input from <b>HDMI 2</b> port.
<b>Component</b>	Selects input from <b>COMPONENT</b> port.
<b>S-Video</b>	Selects input from <b>S-VIDEO</b> port.
<b>Video</b>	Selects input from <b>VIDEO</b> port.

## 3. Web Control

## 3.2 Crestron e-Control® - Main window (continued)

3 Click a button and operate as follows. To show the hidden buttons, click the ◀ / ▶ icons at the left and right ends.

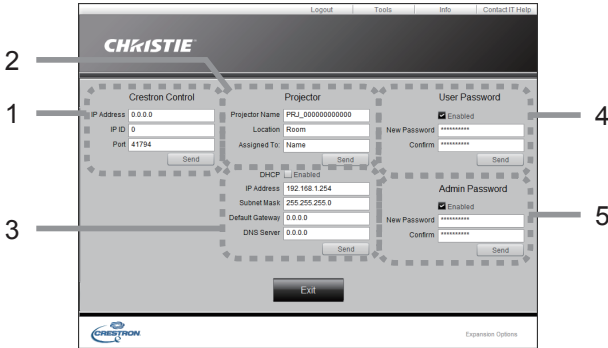
Button	Description
<b>Freeze</b>	Turns Freeze on/off.
<b>Contrast</b>	Adjusts the contrast setting.
<b>Brightness</b>	Adjusts the brightness setting.
<b>Color</b>	Adjusts the color setting.
<b>Sharpness</b>	Adjusts the sharpness setting.
<b>Magnify</b>	Controls the magnification setting using the [+] / [-] buttons. Use the [▲] [▼] [◀] [▶] buttons to move to the area you want to magnify.
<b>Auto</b>	Performs the automatic adjustment.
<b>Blank</b>	Turns the BLANK screen on/off.

4 Click the button and operate in the same way as the bundled remote control.

Button	Description
<b>Menu</b>	Assigned the same operation as <b>MENU</b> button.
<b>Enter</b>	Assigned the same operation as <b>ENTER</b> button.
<b>Reset</b>	Assigned the same operation as <b>RESET</b> button.
▲	Assigned the same operation as ▲ button.
▼	Assigned the same operation as ▼ button.
◀	Assigned the same operation as ◀ button.
▶	Assigned the same operation as ▶ button.

### 3.2 Crestron e-Control® (continued)

#### 3.2.2 Tools window



Configures the settings between the projector and Crestron® control system. Click the **[Exit]** button to return to the Main window.

**NOTE** • If two-byte characters are used, the input text or numbers cannot be set correctly.  
 • All items on this window cannot be left blank.

#### 1 Crestron Control

Configures the settings of Crestron® control system devices.

Item	Description
<b>IP Address</b>	Configures the IP address of the control system.
<b>IP ID</b>	Configures the IP ID of the control system.
<b>Port</b>	Specifies the port number used for communication by the control system.

To apply the settings, click the **[Send]** button.

#### 2 Projector

Configures the network settings of the projector.

Item	Description
<b>Projector Name</b>	Configures the name of the projector. The length of the Projector Name can be up to 64 alphanumeric characters.
<b>Location</b>	Configures the location name of the projector. You can specify a Location name up to 32 alphanumeric characters.
<b>Assigned To:</b>	Configures the user name for the projector. You can specify a user name up to 32 alphanumeric characters.

The usable symbols are space and the following: !"#%&'()\*+,-./:;<=>?@[]^\_`{|}~

To apply the settings, click the **[Send]** button.

### 3. Web Control

#### 3.2 Crestron e-Control® - Tools window (continued)

##### 3 Projector (continued)

Configures the network settings of the projector.

Item	Description
<b>DHCP</b>	Enables DHCP.
<b>IP Address</b>	Configures the IP address when DHCP is disabled.
<b>Subnet Mask</b>	Configures the subnet mask when DHCP is disabled.
<b>Default Gateway</b>	Configures the default gateway when DHCP is disabled.
<b>DNS Server</b>	Configures the DNS server address.

To apply the settings, click the **[Send]** button.

##### 4 User Password

Configures the User Password. To prompt the entry of User Password before starting e-Control®, select the checkbox.

Item	Description
<b>New Password</b>	Configures the password. You can specify a password up to 26 alphanumeric characters. The usable symbols are space and the following: !"#\$%&'()*+,-./:;<=>?@[\\]^_`{ }~
<b>Confirm</b>	Reenter the above password for verification. If the password is incorrect, an error message is displayed.

To apply the settings, click the **[Send]** button.

##### 5 Admin Password

Configures the Admin Password. To prompt the entry of Admin Password before displaying the Tools window, select the checkbox.

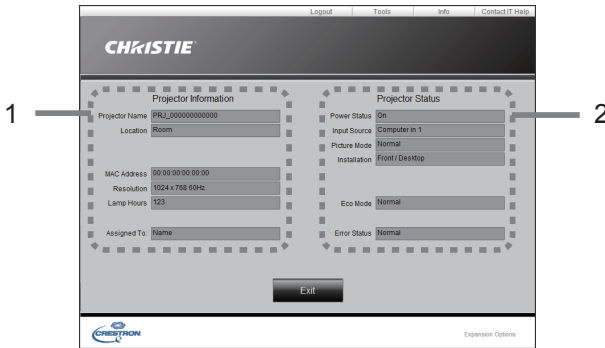
Item	Description
<b>New Password</b>	Configures the password. You can specify a password up to 26 alphanumeric characters. The usable symbols are space and the following: !"#\$%&'()*+,-./:;<=>?@[\\]^_`{ }~
<b>Confirm</b>	Reenter the above password for verification. If the password is incorrect, an error message is displayed.

To apply the settings, click the **[Send]** button.



### 3.2 Crestron e-Control® (continued)

#### 3.2.3 Info window



Displays the settings and status of the projector.  
Click the **[Exit]** button to return to the Main window.

#### 1 Projector Information

Item	Description
<b>Projector Name</b>	Displays the projector name settings.
<b>Location</b>	Displays the location name of the projector.
<b>MAC Address</b>	Displays the wired LAN MAC address of the projector.
<b>Resolution</b>	Displays the resolution and vertical frequency of the signal input selected on the projector.
<b>Lamp Hours</b>	Displays the usage time for the current lamp.
<b>Assigned To:</b>	Displays the user name for the projector.

#### 2 Projector Status

Item	Description
<b>Power Status</b>	Displays the current power status.
<b>Input Source</b>	Displays the current input signal source.
<b>Picture Mode</b>	Displays the current picture mode setting.
<b>Installation</b>	Displays the current installation setting.
<b>Eco Mode</b>	Displays the current eco mode setting.
<b>Error Status</b>	Displays the current error status.

**NOTE** • Projector Name, Location and the user name for Assigned To: may appear truncated if they are too long.

### 3. Web Control

## 3.2 Crestron e-Control® (continued)

### 3.2.4 Help Desk window

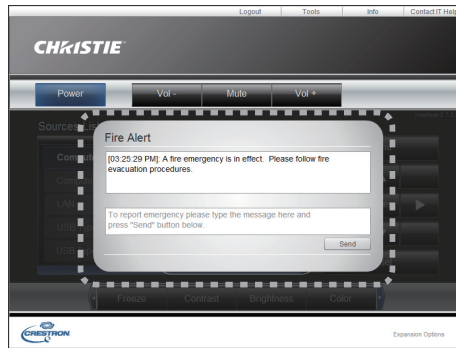


Sends/receives messages to/from the administrator for Crestron RoomView® Express.

Button	Description
	Sends a message.
	Check the received message.

### 3.2 Crestron e-Control® (continued)

#### 3.2.5 Emergency Alert



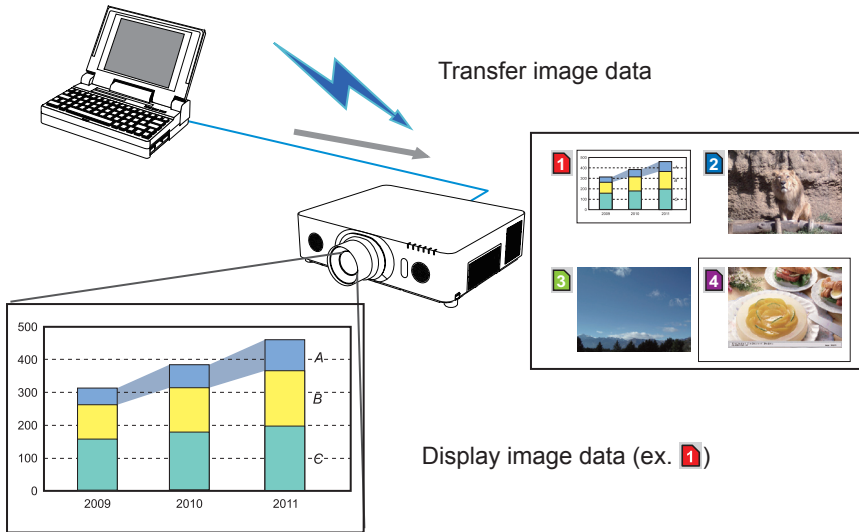
When the administrator for Crestron RoomView® Express sends out an alert message, it will be displayed on the screen. You can reply to the alert message via a chat format. Input a message in the box below the alert message, and click the **[Send]** button.

- NOTE** • For details of Emergency Alert, refer to the manual of Crestron RoomView® Express.
- The alert message from Crestron RoomView® is displayed on the screen of the projector in a way similar to the real-time text of the Messenger function (51). If another real-time text is currently being displayed, it will be overwritten by the alert message. However, if the priority of the real-time text is set to high, it will not be overwritten by the alert message, and the latter will not appear on the screen of the projector. For details, refer to the manual for the application of the Messenger.

## 4. My Image Function

## 4. My Image Function

The projector can display still images that are transferred via the network.



MY IMAGE transmission requires an exclusive application for your computer. Use the application to transfer the image data.

You can download it from the web site (<http://www.christiedigital.com>).

For information on the necessary settings and operations for the computer and projector, refer to the manual for the application.

To display the transferred image, select the MY IMAGE item in the NETWORK menu. For more information, please see the description of the MY IMAGE item of the NETWORK menu. (📖 **NETWORK menu** in the **Operating Guide**)

**NOTE** • It is possible to allocate the image file up to 4 in the maximum.

- Using **MY BUTTON** that registered MY IMAGE can display transferred image. (📖 **OPTION menu** in the **Operating Guide**)

- The image file also can be displayed by using schedule function from the web browser. Refer to item **7.3 Event Scheduling** (📖 **59**) in detail.

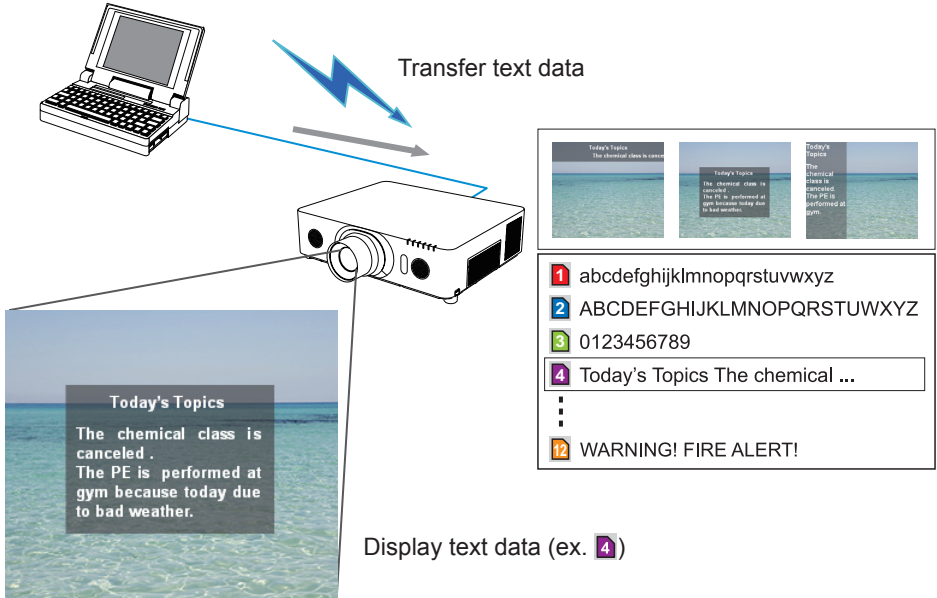
- If you display MY IMAGE data on screen while you are using the USB Display function, the application for the USB Display will be closed. To restart the application, exit the MY IMAGE function, and then the software in the projector, LiveViewerLiteForUSB.exe, will run again. (📖 **USB Display** in the **Operating Guide**)

- If data is transferred via wireless and wired LAN at the same time, the projector may not be able to process the data correctly.

## 5. Messenger Function

The projector can display text data transferred via the network on the screen and play back audio data inside the projector.

The text data can be displayed on the screen in two ways that displays the text transferred from the computer on real time, and the other chooses and displays the text data from the ones once stored in the projector.



Messenger function requires an exclusive application for your computer. To edit, transfer and display the text data, use the application. You can download it from the web site (<http://www.christiedigital.com>). For information on the necessary settings and operations for the computer and projector, refer to the manual for the application.

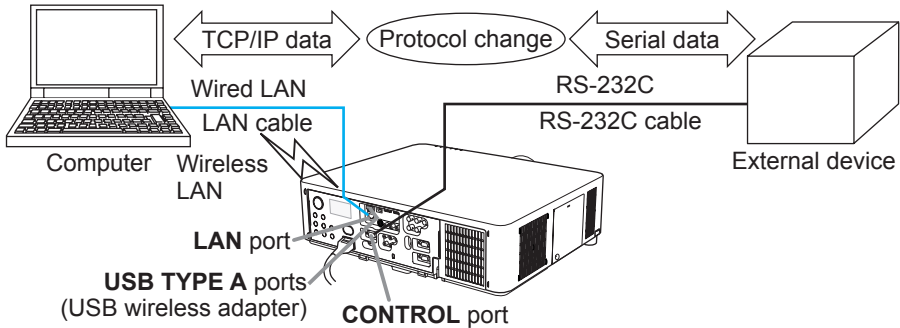
- NOTE** • It is possible to store the text data up to 12 in the maximum.
- Using **MY BUTTON** that registered MESSENGER can turn the displaying messenger text on/off. ( **OPTION** menu in the **Operating Guide** )
  - The text file also can be displayed by using schedule function via the web browser. Refer to item **7.3 Event Scheduling** ( **59** ) for the detail.
  - If data is transferred via wireless and wired LAN at the same time, the projector may not be able to process the data correctly.

## 6. Network Bridge Function

### 6. Network Bridge Function

This projector is equipped with the NETWORK BRIDGE function to perform mutual conversion of a network protocol and a serial interface.

By making use of the NETWORK BRIDGE function, a computer that is connected to the projector via wireless or wired LAN is able to control an external device via RS-232C communication using the projector as a network terminal.



## 6.1 Connecting devices

- 1) Connect the projector's **LAN** port to the computer's LAN port with a LAN cable, or insert the USB wireless adapter into one of the **USB TYPE A** ports.
- 2) Connect the projector's **CONTROL** port and the device's RS-232C port with an RS-232C cable, for RS-232C communication.

**NOTE** • Before connecting the devices, read the manuals for the devices to ensure the connection. For RS-232C connection, check the specifications of each port and use the suitable cable. (📖 **Connection to the ports** in the **Operating Guide - Technical**)

## 6.2 Communication setup

To configure the setup of the communication using NETWORK BRIDGE for the projector, use items in the COMMUNICATION menu. Open the menu of the projector and select the OPTION - SERVICE - COMMUNICATION menu.

( **OPTION menu > SERVICE > COMMUNICATION** in the **Operating Guide**)

- 1) In the COMMUNICATION TYPE menu, select NETWORK BRIDGE (WIRELESS or WIRED depending on the type of connection you use) for the **CONTROL** port.
- 2) Using the SERIAL SETTINGS menu, select the proper baud rate and parity for the **CONTROL** port, according to the specification of the RS-232C port of the connected device.

Item	Condition
BAUD RATE	4800bps/9600bps/19200bps/38400bps
PARITY	NONE/ODD/EVEN
Data length	8 bit (fixed)
Start bit	1 bit (fixed)
Stop bit	1 bit (fixed)

- 3) Using the TRANSMISSION METHOD menu, set up the proper method for the **CONTROL** port according to your use.

**NOTE** • The OFF is selected for the COMMUNICATION TYPE as the default setting.

- Using the COMMUNICATION menu, set up the communication. Remember that an unsuitable setup could cause malfunction of communication.
- When either one of the NETWORK BRIDGE settings is selected in the COMMUNICATION TYPE menu, RS-232C commands cannot be received from the **CONTROL** port.

## 6.3 Communication port

For the NETWORK BRIDGE function, send the data from the computer to the projector with using the **Network Bridge Port** that is configured in the **Port Settings** of web browser. ( 23)

**NOTE** • Except for 41794, 9715, 9716, 9719, 9720, 5900, 5500, 4352 between 1024 and 65535 can be set up as the **Network Bridge Port** number. It is set to 9717 as the default setting.

## 6. Network Bridge Function

## 6.4 Transmission method

The transmission method can be selected from the menus, only when the NETWORK BRIDGE is selected for the COMMUNICATION TYPE.

( **OPTION menu > SERVICE > COMMUNICATION** in the **Operating Guide**)

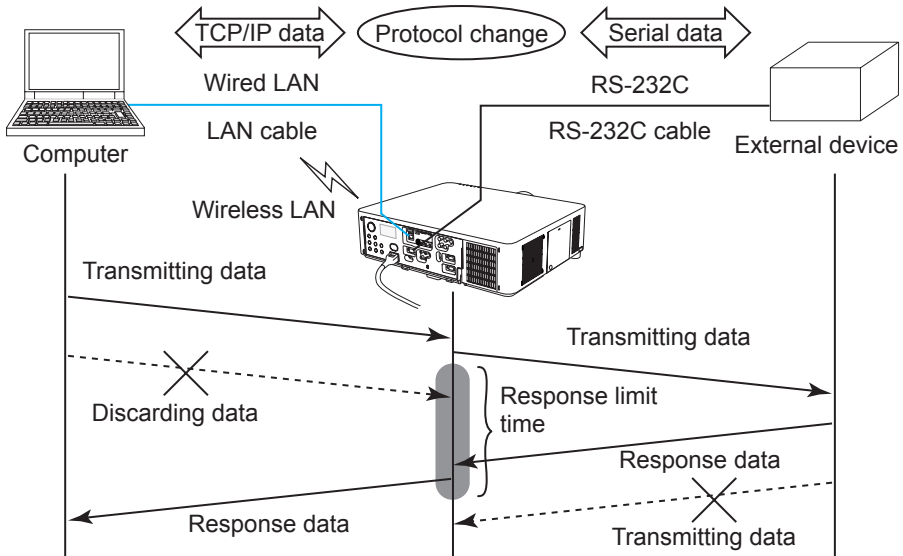
HALF-DUPLEX ↔ FULL-DUPLEX


## 6.4.1 HALF-DUPLEX

This method lets the projector make two way communication, but only one direction, either transmitting or receiving data, is allowed at a time. The method does not allow the projector to receive the data from the computer while waiting for response data from an external device. After the projector receives the response data from an external device or the response limit time is past, the projector can receive the data from the computer.

That means that the projector controls transmitting and receiving the data to synchronize the communication.

To use the HALF-DUPLEX method, set up the RESPONSE LIMIT TIME following the instructions below.



Using the RESPONSE LIMIT TIME menu, set the waiting time for response data from an external device. ( **OPTION menu > SERVICE > COMMUNICATION** in the **Operating Guide**)

OFF ↔ 1s ↔ 2s ↔ 3s (↔ OFF)



#### 6.4 Transmission method (continued)

**NOTE** • With using the HALF-DUPLEX method, the projector can send out 254 byte data as maximum at once.

- If it is not required to monitor the response data from an external device and the RESPONSE LIMIT TIME is set to OFF, the projector can receive the data from the computer and send it out to an external device continuously. The OFF is selected as the default setting.

##### 6.4.2 FULL-DUPLEX

This method lets the projector make two way communication, transmitting and receiving data at the same time, without monitoring response data from an external device.

With using this method, the computer and an external device will send the data out of synchronization. If it is required to synchronize them, set the computer to make the synchronization.

**NOTE** • In case that the computer controls to synchronize transmitting and receiving the data, it may not be able to control an external device well depending on the processing status of the projector.

## 7. Other Functions

## 7. Other Functions

## 7.1 E-mail Alerts

The projector can automatically send an alert message to the specified e-mail addresses when the projector detects a certain condition that is requiring maintenance or detected an error.

**NOTE** • Up to five e-mail addresses can be specified.  
• The projector may be not able to send e-mail if the projector suddenly loses power.

## Mail Settings (📖 24)

To use the projector's e-mail alert function, please configure the following items through a web browser.

**Example:** If the IP address of the projector is set to **192.168.1.10**:

- 1) Enter "**http://192.168.1.10/**" into the address bar of the web browser, and select Projector Web Control from the selection window.
- 2) Enter your user name and password, and then click the **[OK]**.
- 3) Click the **[Mail Settings]** and configure each item. Refer to item **3.1.5 Mail Settings** (📖 24) for further information.
- 4) Click the **[Apply]** button to save the settings.

**NOTE** • Click the **[Send Test Mail]** button in the **[Mail Settings]** to confirm that the e-mail settings are correct. The following mail will be delivered to the specified addresses.

Subject line	:Test Mail	<Projector name>
Text	:Send Test Mail	
	Date	<Testing date>
	Time	<Testing time>
	IP Address	<Projector IP address>
	MAC Address	<Projector MAC address>

### 7.1 E-mail Alerts (continued)

- 5) Click the **[Alert Settings]** on the main menu to configure the E-mail Alerts settings.
- 6) Select and configure each alert item. Refer to item **3.1.6 Alert Settings** (📖31) for further information.
- 7) Click the **[Apply]** button to save the settings.

Failure/Warning e-mails are formatted as follows:

Subject line	: <Mail title>	<Projector name>
Text	: <Mail text>	
	Date	<Failure/Warning date>
	Time	<Failure/Warning time>
	IP Address	<Projector IP address>
	MAC Address	<Projector MAC address>

## 7. Other Functions

## 7.2 Projector Management using SNMP

The SNMP (Simple Network Management Protocol) enables to manage the projector information, which is a failure or warning status, from the computer on the network. The SNMP management software will be required on the computer to use this function.

**NOTE** • It is recommended that SNMP functions be carried out by a network administrator.

- SNMP management software must be installed on the computer to monitor the projector via SNMP.

### SNMP Settings (📖23)

Configure the following items via a web browser to use SNMP.

**Example:** If the IP address of the projector is set to **192.168.1.10**:

- 1) Enter “**http://192.168.1.10/**” into the address bar of the web browser, and select Projector Web Control from the selection window.
- 2) Enter your user name and password, and then click the **[OK]**.
- 3) Click the **[Port Settings]** on the main menu.
- 4) Click the **[Download MIB file]** to download a MIB file.

**NOTE** • To use the downloaded MIB file, specify the file by your SNMP manager.

- 5) Click the **[Enable]** check box to open the **SNMP Port**. Set the IP address to send the SNMP trap to when a Failure/Warning occurs.

**NOTE** • A Network Restart is required after the **SNMP Port** configuration settings have been changed. Click **[Network Restart]** on the main menu and click the **[Restart]** button. Then configure the following items.

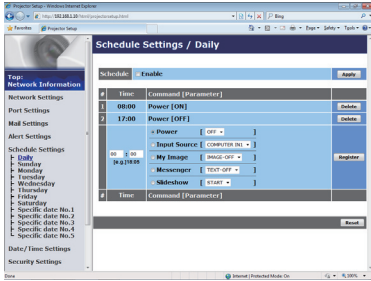
- 6) Click the **[Security Settings]** on the main menu.
- 7) Click the **[SNMP]** and set the community name on the screen that is displayed.

**NOTE** • A Network Restart is required after the **Community name** has been changed. Click **[Network Restart]** on the main menu and click the **[Restart]** button. Then configure the following items.

- 8) Configure the settings for Trap transmission of Failures/Warnings. Click the **[Alert Settings]** on the main menu and select the Failure/Warning item to be configured.
- 9) Click the **[Enable]** check box to send out the SNMP trap for Failures/Warnings. Clear the **[Enable]** check box when SNMP trap transmission is not required.
- 10) Click the **[Apply]** button to save the settings.

### 7.3 Event Scheduling

The scheduling function enables to setup scheduled events including power on / power off. It enables to be “self-management” projector.



**NOTE** • You can schedule the following control events: Power, Input Source, My Image, Messenger, Slideshow. (📖28)

- The power on event has the lowest priority among the all events that are defined at the same time.
- There are 3 types of Scheduling, 1) daily 2) weekly 3) specific date. (📖27)
- The priority for scheduled events is as follows 1) specific date 2) weekly 3) daily.
- Up to five specific dates are available for scheduled events. Priority is given to those with the lower numbers when more than one event has been scheduled for the same date and time (e.g., ‘Specific date No. 1’ has priority over ‘Specific date No. 2’ and so on.
- Be sure to set the date and time before enabling scheduled events. (📖30)

Once you turn off the projector in the SAVING mode (📖SETUP menu in the **Operating Guide**) or the AC power, the current date and time setting is reset.

## 7. Other Functions

### 7.3 Event Scheduling(continued)

#### Schedule Settings (📖27)

Schedule settings can be configured from a web browser.

**Example:** If the IP address of the projector is set to **192.168.1.10**:

- 1) Enter "**http://192.168.1.10**" into the address bar of the web browser, and select Projector Web Control from the selection window.
- 2) Enter your user name and password, and then click the **[OK]**.
- 3) Click the **[Schedule Settings]** on the main menu and select the required schedule item. For example, if you want to perform the command every Sunday, please select the **[Sunday]**.
- 4) Click the **[Enable]** check box to enable scheduling.
- 5) Enter the date (month/day) for specific date scheduling.
- 6) Click the **[Apply]** button to save the settings.
- 7) After configure the time, command and parameters, click the **[Register]** to add the new event.
- 8) Click the **[Delete]** button when you want to delete a schedule.

There are three types of scheduling.

- 1) Daily: Perform the specified operation at a specified time every day.
- 2) Sunday ~ Saturday: Perform the specified operation at the specified time on a specified day of the week.
- 3) Specific date: Perform the specified operation on the specified date and time.

**NOTE** • In standby mode, the **POWER** indicator will flash green for approx. 3 seconds when at least 1 "Power ON" schedule is saved.  
• When the schedule function is used, the power cord must be connected to the projector and the outlet. The schedule function does not work when the breaker in a room is tripped. The power indicator will lights orange or green when the projector is receiving AC power.

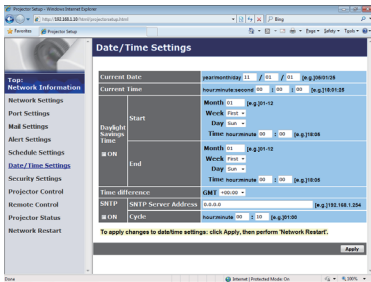
### 7.3 Event Scheduling(continued)

#### Date/Time Settings (📖30)

The Date/Time setting can be adjusted via a web browser.

**Example:** If the IP address of the projector is set to **192.168.1.10**:

- 1) Enter “**http://192.168.1.10**” into the address bar of the web browser, and select Projector Web Control from the selection window.
- 2) Enter your user name and password, and then click the **[OK]**.
- 3) Click the **[Date/Time Settings]** on the main menu and configure each item. Refer to item **3.1.8 Date/Time Settings (📖30)** for further information.
- 4) Click the **[Apply]** button to save the settings.



**NOTE** • The internal clock's time may not remain accurate. Using SNTP is recommended to maintain accurate time (📖31).

- Once you turn off the projector in the SAVING mode (📖SETUP menu in the Operating Guide) or the AC power, the current date and time setting is reset.

## 7. Other Functions

### 7.4 Command Control via the Network

You can configure and control the projector via the network using RS-232C commands.

#### Communication Port

The following two ports are assigned for the command control.

TCP #23 (**Network Control Port1 (Port: 23)**)

TCP #9715 (**Network Control Port2 (Port: 9715)**)

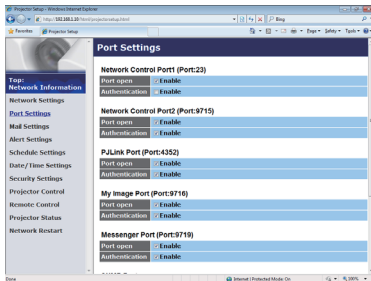
**NOTE** • Command control is available only via the specified port above.

#### Command Control Settings (📖22)

Configure the following items from a web browser when command control is used.

**Example:** If the IP address of the projector is set to **192.168.1.10**:

- 1) Enter “**http://192.168.1.10**” into the address bar of the web browser, and select Projector Web Control from the selection window.
- 2) Enter your user name and password, and then click the **[OK]**.
- 3) Click the **[Port Settings]** on the main menu.



- 4) Click the **[Enable]** check box to open **Network Control Port1 (Port: 23)** to use TCP #23. Click the **[Enable]** check box for the **[Authentication]** setting when authentication is required, otherwise clear the check box.
- 5) Click the **[Enable]** check box to open **Network Control Port2 (Port: 9715)** to use TCP #9715. Click the **[Enable]** check box for the **[Authentication]** setting when authentication is required, otherwise clear the check box.
- 6) Click the **[Apply]** button to save the settings.



### 7.4 Command Control via the Network (continued)

When the authentication setting is enabled, the following settings are required.  
 (📖32)

- 7) Click the **[Security Settings]** on the main menu.
- 8) Click the **[Network Control]** and enter the desired authentication password.  
 \* See NOTE.
- 9) Click the **[Apply]** button to save the settings.

**NOTE** • The Authentication Password will be the same for **Network Control Port1 (Port: 23)**, **Network Control Port2 (Port: 9715)**, **PJLink™ Port (Port: 4352)**, **My Image Port (Port: 9716)** and **Messenger Port (Port: 9719)**.  
 • The new configuration settings are activated after restarting the network connection. When the configuration settings are changed, you must restart the network connection. You can restart the network connection from **Network Restart** on the main menu (📖41).

## 7. Other Functions

### 7.4 Command Control via the Network (continued)

#### Command Format

Command formats differ among the different communication ports.

- TCP #23

You can use the RS-232C commands without any changes. The reply data format is the same as the RS-232C commands. ([RS-232C Communication](#) in the **Operating Guide - Technical**)

However, the following reply will be sent back in the event of authentication failure when authentication is enabled.

<Reply in the event of an authentication error>

Reply	Error code	
0x1F	0x04	0x00

- TCP #9715

#### Send Data format

The following formatting is added to the header (0 x 02), Data length (0 x 0D), Checksum (1 byte) and Connection ID (1 byte) of the RS-232C commands.

Header	Data length	RS-232Ccommand	Check Sum	Connection ID
0x02	0x0D	13 bytes	1 byte	1 byte

- Header → 0x02, Fixed
- Data length → RS-232C commands byte length (0x0D, Fixed)
- RS-232C command → RS-232C commands that start with 0xBE 0xEF (13 bytes)
- Check Sum → This is the value to make zero on the addition of the lower 8 bits from the header to the checksum.
- Connection ID → Random value from 0 to 255 (This value is attached to the reply data)

**7.4 Command Control via the Network (continued)**

**Reply Data format**

The connection ID (the data is same as the connection ID data on the sending data format) is attached to the RS-232C commands reply data.

<ACK reply>

Reply	Connection ID
0x06	1 byte

<NAK reply>

Reply	Connection ID
0x15	1 byte

<Error reply>

Reply	Error code	Connection ID
0x1C	2 bytes	1 byte

<Data reply>

Reply	Data	Connection ID
0x1D	2 bytes	1 byte

<Projector busy reply>

Reply	Status code	Connection ID
0x1F	2 bytes	1 byte

<Authentication error reply>

Reply	Authentication Error code		Connection ID
0x1F	0x04	0x00	1 byte

## 7. Other Functions

### 7.4 Command Control via the Network (continued)

#### Automatic Connection Break

The TCP connection will be automatically disconnected after there is no communication for 30 seconds after being established.

#### Authentication

The projector does not accept commands without authentication success when authentication is enabled. The projector uses a challenge response type authentication with an MD5 (Message Digest 5) algorithm.

When the projector is using a LAN, a random 8 bytes will be returned if authentication is enabled. Bind this received 8 bytes and the Authentication Password and digest this data with the MD5 algorithm and add this in front of the commands to send.

Following is a sample if the Authentication Password is set to “password” and the random 8 bytes are “a572f60c”.

- 1) Connect the projector.
- 2) Receive the random 8 bytes “a572f60c” from the projector.
- 3) Bind the random 8 bytes “a572f60c” and the Authentication Password “password” and it becomes “a572f60cpassword”.
- 4) Digest this bind “a572f60cpassword” with MD5 algorithm.  
It will be “e3d97429adffa11bce1f7275813d4bde”.
- 5) Add this “e3d97429adffa11bce1f7275813d4bde” in front of the commands and send the data.  
Send “e3d97429adffa11bce1f7275813d4bde”+command.
- 6) When the sending data is correct, the command will be performed and the reply data will be returned. Otherwise, an authentication error will be returned.

**NOTE** • As for the transmission of the second or subsequent commands, the authentication data can be omitted when the same connection.

## 7.5 Crestron RoomView®

Crestron RoomView® is a multi-user resource management program provided by Crestron Electronics, Inc. It is an application for managing and controlling the projector and other AV devices collectively.

For details of Crestron RoomView®, refer to the Crestron® website.


URL: <http://www.crestron.com> (as of Jun. 2012)

The following communication interfaces can be used to manage the entire facility.

- 1) Crestron RoomView® Express / Crestron RoomView® Server Edition  
RoomView™ Express and RoomView™ Server Edition are software provided by Crestron Electronics, Inc. They are used for managing all the AV devices, and are also able to communicate with the help desk as well as send out alert messages.

For details of the software, refer to the following website.

URL: <http://www.crestron.com/getroomview> (as of Jun. 2012)

- 2) Crestron e-Control®  
Crestron e-Control® is a system controller that can be operated via a web browser ( 42).

## 8. Troubleshooting

## 8. Troubleshooting

Problem	Likely Cause	Things to Check	Reference Page Number
Can't communicate	Weak radio signal	<ul style="list-style-type: none"> <li>• Bring the computer and projector closer together.</li> <li>• Radio waves won't go through concrete and metal (steel doors, etc.)</li> </ul>	–
	Cannot communicate due to configure wireless / encryption settings.	If there is a wireless configuration utility loaded on your computer, check its settings. Please refer the manual of your configuration utility.	–
	The computer and/or projector's network settings are not configured correctly.	Check the network configurations of the computer and projector.	–
	The same network address is set for both wireless and wired LAN.	Change the network address setting for wireless or wired LAN.	20, 21
	<Only for wireless LAN> The USB wireless adapter is not inserted into the projector.	Insert the optional USB wireless adapter.	–
	<Only for wireless LAN> There is closely another projector or other that has the same wireless setting.	Try changing of SSID and IP Address.	20
Others - Information from the projector to computer is not correct or completed - The projector does not respond	Communication between the projector and computer is not working well.  NETWORK Functions of the projector is not working well.	Try "NETWORK RESTART" in SERVICE menu under the NETWORK menu.	In the <b>Operating Guide</b>

**9. Specifications**

Item	Specifications
<b>Control software</b>	Dedicated computer application and Web browser
<b>Corresponding protocol</b>	TCP/IP, DHCP client and HTTP server
<b>Network</b>	Wireless LAN (IEEE802.11b/g/n) (Ad-Hoc and Infrastructure modes) Wired LAN(100Base-TX/10Base-T)
<b>Security</b>	WEP (64/128bit), WPA-PSK (TKIP/AES), WPA2-PSK (TKIP/AES), SSID
<b>Computer application's system requirements</b>	OS: Windows® XP Home Windows® XP Professional Windows Vista® Home Basic Windows Vista® Home Premium Windows Vista® Business Windows Vista® Ultimate Windows Vista® Enterprise Windows® 7 Starter Windows® 7 Home Basic Windows® 7 Home Premium Windows® 7 Professional Windows® 7 Ultimate Windows® 7 Enterprise CPU: Pentium 4 (2.8 GHz or higher) Graphic card: 16 bit, XGA or higher Memory: 512 MB or higher Hard disk space: 100 MB or higher Web browser: Internet Explorer® 6.0 or higher CD-ROM/DVD-ROM drive
<b>USB wireless adapter</b>	Gemtek USB-Link11n

## 10. Warranty and after-sales service

### 10. Warranty and after-sales service

If a problem occurs with the equipment, please read **8. Troubleshooting** (📖 68) section first and review all suggested check points. After that, please contact your dealer or service company, if you still have the problem. They will tell you what warranty condition is applied.





## Corporate offices

USA – Cypress  
ph: 714-236-8610

Canada – Kitchener  
ph: 519-744-8005

## Worldwide offices

United Kingdom  
ph: +44 118 977 8000

France  
ph: +33 (0) 1 41 21 00 36

Germany  
ph: +49 2161 664540

Eastern Europe  
ph: +36 (0) 1 47 48 100

Middle East  
ph: +971 (0) 4 299 7575

Spain  
ph: + 34 91 633 9990

Singapore  
ph: +65 6877-8737

Beijing  
ph: +86 10 6561 0240

Shanghai  
ph: +86 21 6278 7708

Japan  
ph: 81-3-3599-7481

South Korea  
ph: +82 2 702 1601



For the most current technical documentation,  
please visit [www.christiedigital.com](http://www.christiedigital.com)

**CHRISTIE®**