

Please read these instructions carefully before assembly



dnp Supernova™ Core II

Installation guide



dnp optical front
projection screens



Supernova™
Supernova™ is a registered trademark of dnp denmark as

> dnp denmark as
Skruegangen 2
DK-2690 Karlslunde
Denmark

> Phone +45 4616 5100
Fax +45 4616 5200
www.dnp-screens.com
dnp@dnp.dk



Warnings

- ⚠ Follow all assembly instructions. Incorrect assembly can lead to screen damage and invalidate the dnp warranty.
- ⚠ Be careful not to kink the film during handling as it could make permanent marks in the film.
- ⚠ Keep sharp objects away from the film as they can scratch the film and destroy the optical properties.
- ⚠ Please note that the backside of the film is more sensitive than the frontside and should thus be handled more carefully.
- ⚠ Do not apply pressure to the screen material once it is mounted on the frame.

Need help?



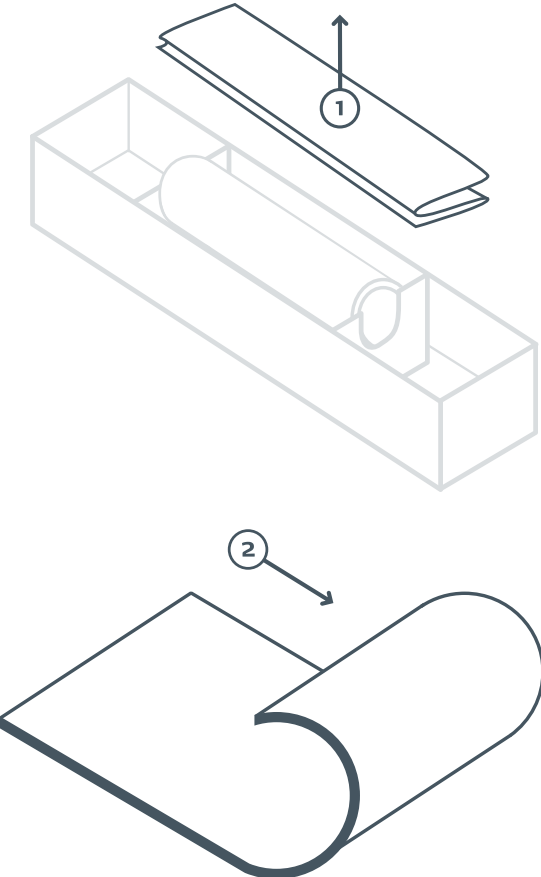
US citizens: Contact dnp US Hotline:
Call (619)-600-2892 for instant service- and installation support.

Open Monday-Friday from 6:00 AM to 6:00 PM. US requests only.

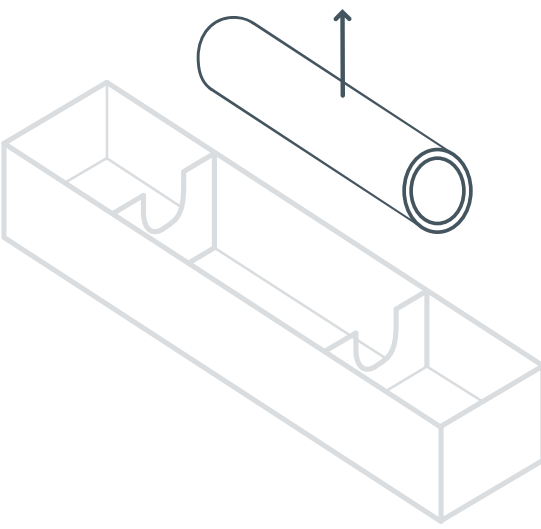
All others:
Please contact place of purchase

June 2012 - Part no. 3751 - rev. 4 - dnp

01

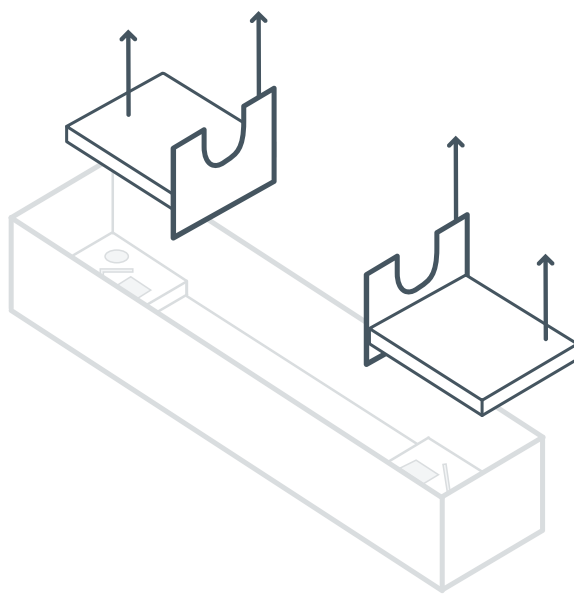


02

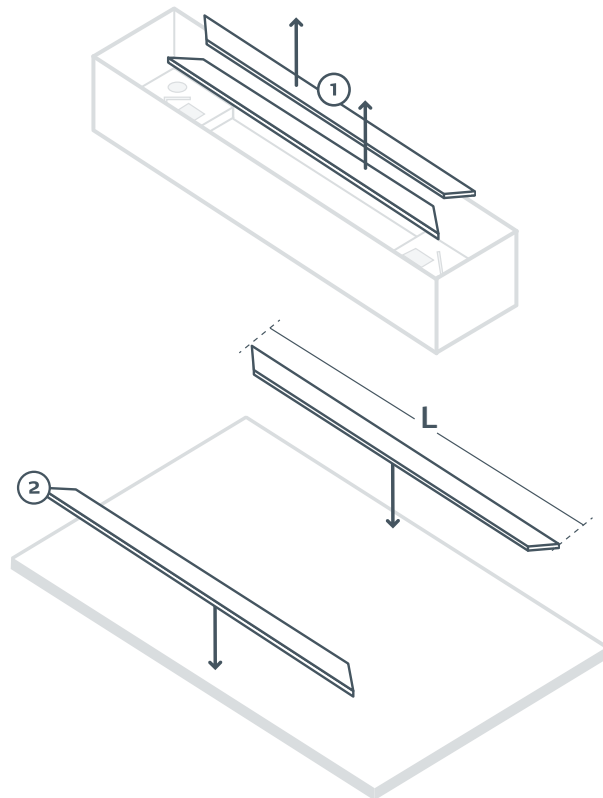


Remain packed until rolled out on frame
Step 9

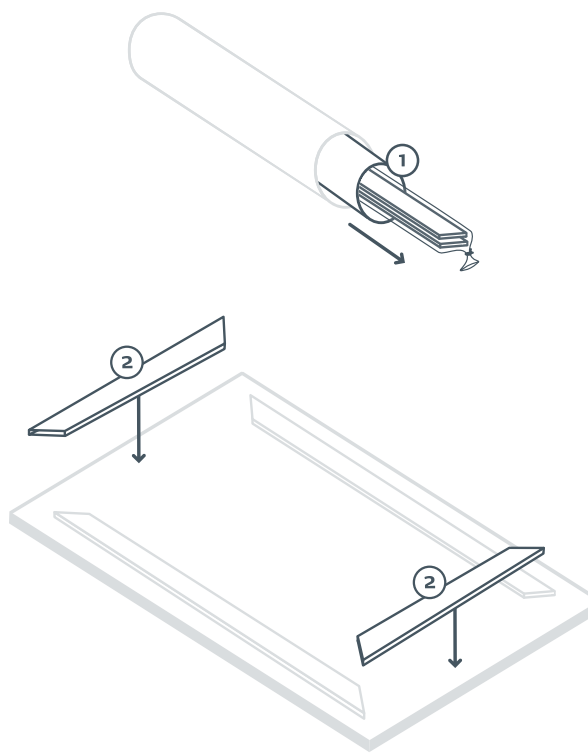
03



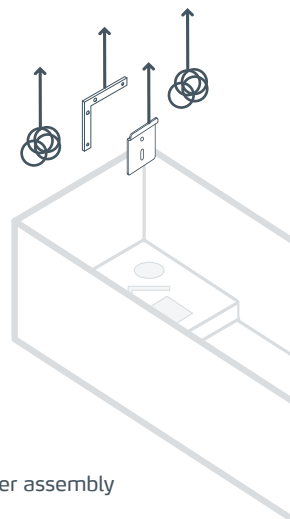
04



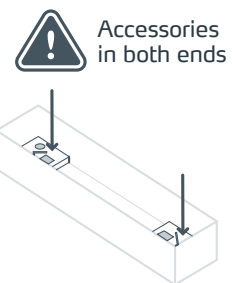
05



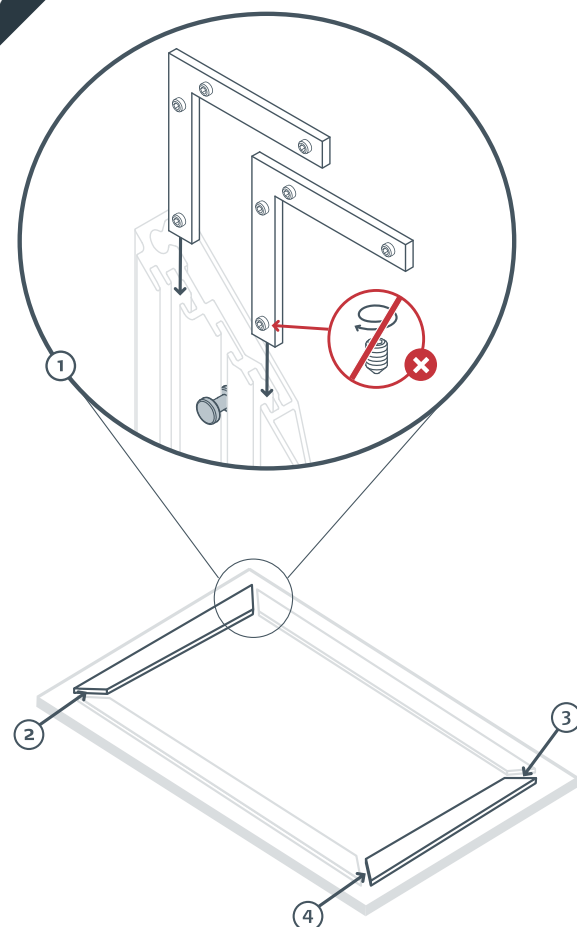
06



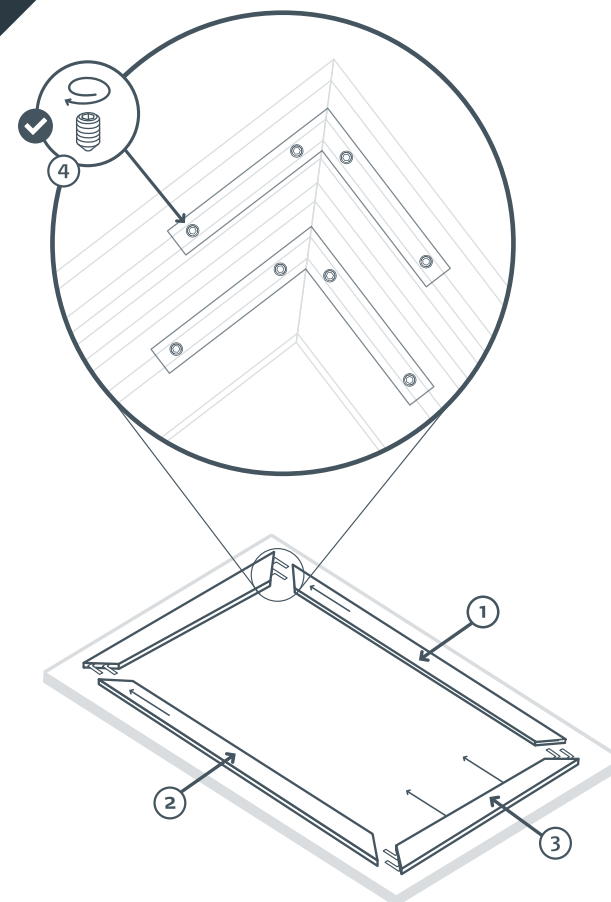
- Corner assembly (x 8)
- 3 mm Allen key
- Pinot screw (preinstalled) (x 32)
- Wall brackets (x 2)
- Wall screws + plugs (x 4)
- O-rings (x vary)



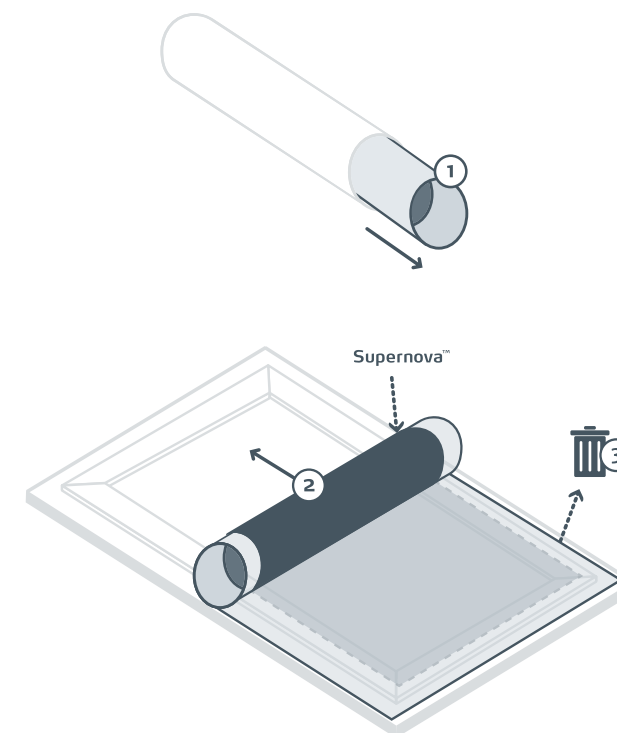
07



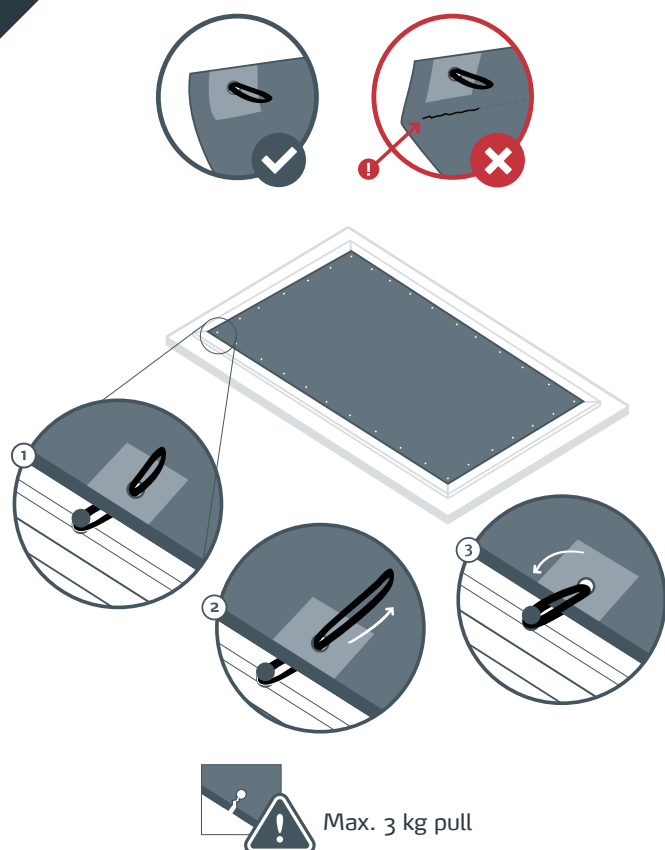
08



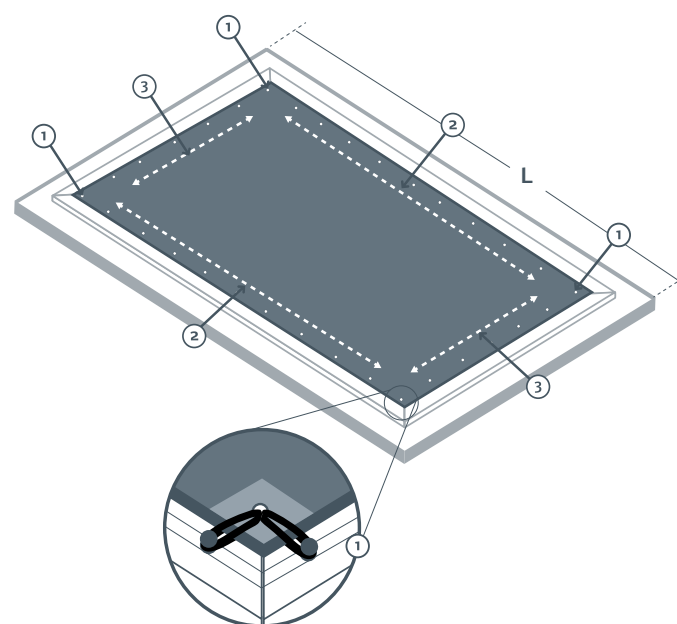
09



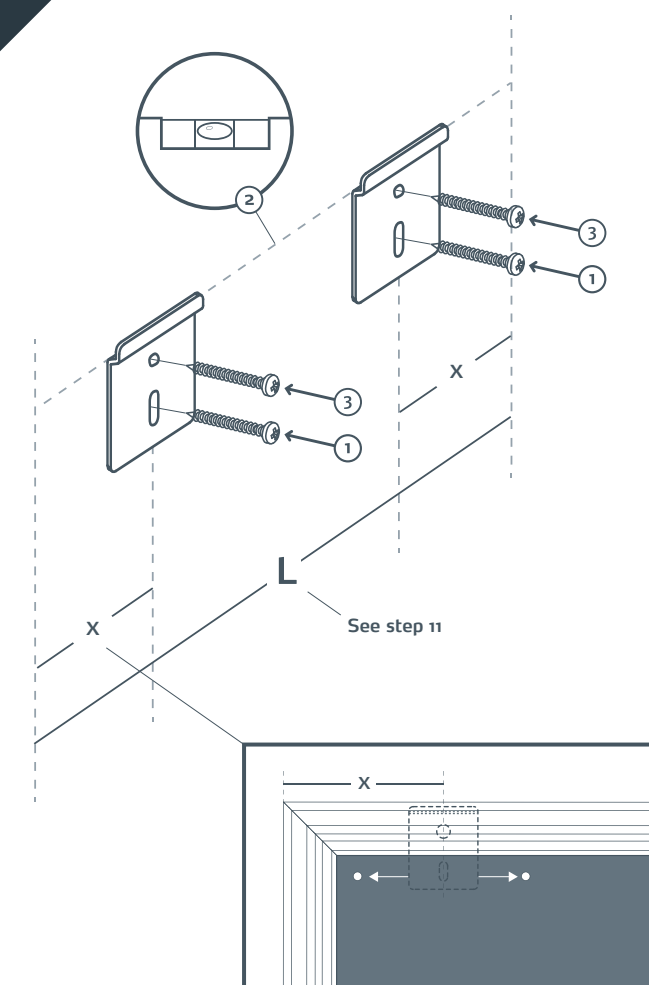
10



11



12



13

