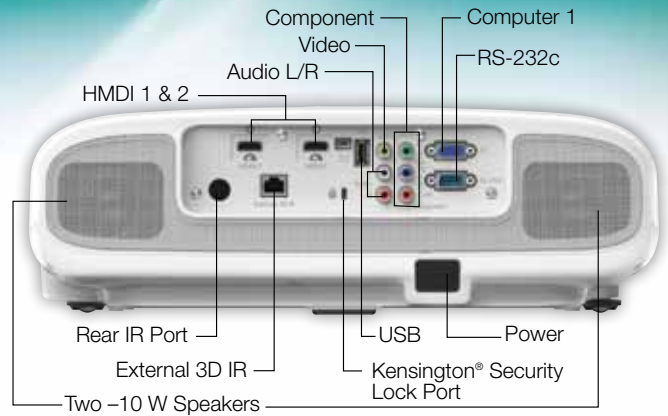


# PowerLite<sup>®</sup> Home Cinema 3010

## Home Theater Projector



Product Name	Product Code	UPC
PowerLite Home Cinema 3010	V11H421020	0 10343 88508 0
Genuine EPSON Lamp	V13H010L68	0 10343 88652 0
Replacement Air Filter	V13H134A38	0 10343 88654 4
3D Glasses	V12H483001	0 10343 88657 5

### Specifications

**Projection System**  
EPSON 3LCD, 3-chip technology

**Projection Method**  
Front / Rear / Ceiling mount

**Product Color**  
White and Gray

**Driving Method**  
EPSON Poly-silicon TFT Active Matrix, 0.61-inch wide panel with MLA

**Projected Output**  
HD, 2D, 3D, 1080p

**Pixel Number**  
2,073,600 dots (1920 x 1080) x 3

**Color Light Output<sup>1</sup>**  
2200 lumens

**White Light Output<sup>1</sup>**  
2200 lumens (ISO 21118 Standard)

**Aspect Ratio**  
Native 16:9 widescreen (4:3 resize)  
Compatible with 4:3 and 2.35:1 video formats with Normal, Full or Zoom Modes

**Native Resolution**  
1080p (1920 x 1080)

**Resize**  
16:10, 4:3

**Lamp Type**  
E-TORL 230 W UHE

**Lamp Life<sup>3</sup>**  
Up to 5000 hours (ECO mode)  
Up to 4000 hours (Normal mode)

**Throw Ratio Range**  
1.32 – 2.15

**Size (projected distance)**  
30" – 300"

**Keystone Correction**  
Vertical: ± 30 degrees (Auto)  
Horizontal: ± 30 degrees (Slide bar)

**Contrast Ratio**  
Up to 40,000:1

**Color Reproduction**  
Full-color (1.07 billion colors)

**Color Processing**  
Full 10 bit (Digital only)

### Projection Lens

**Type**  
Manual Focus / Manual Zoom

**F-number** 1.51 – 1.99

**Focal Length**  
18.2 – 29.2 mm, widescreen image size (projected distance): 100" diagonal (wide: 9.7' – tele: 15.7')

**Zoom Ratio** Manual 1.6

### Other

**Display Performance**  
1920 x 1080 native 1080p; HD, 2D, 3D

**Color Modes**  
2D: Dynamic, Living room, Natural, Cinema, Auto  
3D: 3D Dynamic, 3D Cinema

**Input Signal**  
DVD region code 1  
Composite: NTSC / NTSC4.43 / PAL / M-PAL / N-PAL / PAL60 / SECAM  
Component: 480i / 576i / 480p / 576p / 720p / 1080i / 1080p  
HDMI: TMDS  
HD-DVD and Blu-ray<sup>®</sup> (external source only)

**Terminal Inputs**  
RCA (video) x 1  
RCA (component) x 3  
RCA (audio) L/R x 1  
USB Type A x 1  
VGA D-sub 15 pin (computer input) x 1  
USB Type A  
USB Type B (service only)  
HDMI x 2  
RS-232c x 1

**Terminal Outputs**  
RJ-45 (external 3D emitter)

**Video Compatibility**  
2D: WXGA, SXGA, XGA, SVGA, VGA;  
3D: 720p, 1080i, 1080p

**Computer Compatibility**  
PC, Mac<sup>®</sup>

**Speakers**  
Two integrated 10 W stereo speakers

**Audio**  
DTS Digital Surround and Dolby<sup>®</sup> Digital

**Media Format**  
16:9

**Operating Temperature**  
5 °C to 35 °C <41 °F to 95 °F>

**Power Supply Voltage**  
100-240 V AC +/- 10% , 50/60 Hz

### Other (continued)

**Power Consumption**  
100 – 240 V AC 50/60 Hz 3.7 – 1.7 A

**Fan Noise** 24 – 32 dB

**Security** Kensington Security Lock port

### Dimensions (W x D x H)

**Including feet** 16.6" x 14.4" x 5.5"  
**Excluding feet** 16.6" x 14.4" x 5.4"  
**Weight** 13.3 lb

### Remote Control

**Features**  
Front and rear directional

**Operating Angle**  
± 30 degrees

**Operating Distance**  
32 feet (10 meters)

### Parental Controls

**Power Button Lock**  
Hinders projector from being turned on without parental supervision

### Whats in the Box

PowerLite Home Cinema 3010 projector, two pairs of EPSON active shutter 3D glasses, power cord, two HDMI cable clamps, remote control with AA batteries, CD ROM with users guide link

### Optional Accessories

Genuine EPSON lamp	V13H010L68
Replacement air filter	V13H134A38
3D glasses	V12H483001
External 3D IR emitter	V12H484001
Projector ceiling mount	CHF1000
Remote control	1557492
PixiePlus control system for EPSON projectors	ELPSP10
Belkin Pro Series VGA / SVGA cable – 6 ft	F3H982-06
Belkin Pro Series VGA / SVGA cable – 10 ft	F3H982-10
Belkin Pro Series VGA / SVGA cable – 25 ft	F3H982-25
Belkin PureAV HDMI audio video cable – 3 ft	AV22300-03
Belkin PureAV HDMI audio video cable – 6 ft	AV22300-06
Belkin PureAV HDMI audio video cable – 12 ft	AV22300-12
Kensington Security Lock	ELPSL01
Repair/Exchange 1-year extended service plan	EPPSNVHTRB1
Repair/Exchange 2-year extended service plan	EPPSNVHTRB2

### Packaging Specifications

**Projector**  
19.8" x 17.3" x 12.2" (W x D x H)  
Weight 18.75 lb

**Genuine EPSON Lamp**  
5.5" x 5.1" x 5.6" (W x D x H)  
Weight 0.70 lb

**Air Filter**  
6.0" x 3.3" x 1.7" (W x D x H)  
Weight 0.10 lb

**Ceiling Mount**  
13.0" x 13.4" x 4.3" (W x D x H)  
Weight 6.40 lb

**3D Glasses**  
3.0" x 8.8" x 3.2" (W x D x H)  
Weight 0.30 lb

**3D Emitter**  
3.0" x 5.8" x 2.5" (W x D x H)  
Weight 0.40 lb

1 Color and white light output will vary depending on mode selected. White light output measured using ISO 21118 standard.  
2 Data source: ProjectorCentral.com Jan. 2011. Average of 1038 shipping models for which manufacturers provided lumens and total power data, all resolutions and brightness levels.  
3 Lamp life will vary depending upon mode selected, environmental conditions and usage. Lamp brightness decreases over time.  
4 See our website for convenient and reasonable recycling options at [www.epson.com/recycle](http://www.epson.com/recycle)  
5 SmartWay is an innovative partnership of the U.S. Environmental Protection Agency that reduces greenhouse gases and other air pollutants and improves fuel efficiency.  
6 The Split Screen feature can only use one digital input source at a time. The other source must be an analog source (PC/Component or Composite video). However, two different analog input sources can be used at the same time.  
7 Overnight shipping not available in all areas. Epson Value Series has a two-business-day exchange program. Road Service orders must be in by 3 p.m. Eastern Time for two-business-day delivery.



## PowerLite<sup>®</sup> Home Cinema 3010

HOME THEATER PROJECTOR



**3D**

Includes  
2 pairs of  
3D glasses!

### 2D and 3D, Full HD 1080p Home Theater Projector with Integrated Speakers.

Bring the power of 3D right to your living room with the PowerLite Home Cinema 3010. Immerse yourself in eye-popping 3D adventures, with 2200 lumens color and white light output<sup>1</sup>, Full HD 1080p performance and a remarkable contrast ratio of up to 40,000:1. Enjoy amazing audio with two powerful, built-in 10 W stereo speakers. This high-value home theater projector also features great 2D performance. It's never been easier to entertain family and friends with a true-to-life 3D cinematic experience, the PowerLite Home Cinema 3010 includes two pairs of active shutter 3D glasses.

**A true cinematic experience** — 2D and 3D, Full HD 1080p technology puts you right in the middle of exciting, lifelike adventures

**Super bright and true-to-life colors** — 2200 lumens color and white light output<sup>1</sup>, and contrast ratio of up to 40,000:1

**Rich, vibrant color and reliable performance** — 3LCD, 3-chip technology



# PowerLite® Home Cinema 3010

## HOME THEATER PROJECTOR

### The best-selling projectors in the world.

Epson offers a wide range of high-quality projectors to meet almost any need. Built with image quality and reliability in mind, EPSON® high-definition projectors take home theater entertainment to a whole new level, featuring color and detail that's sure to win rave reviews from friends and family alike. With the vivid realism of EPSON 3LCD technology, these projectors will make your home the hottest ticket in town.



#### 3LCD technology — for quality and color that's beyond amazing

- 3 chips for full-time, vibrant color
- 25% less electricity required per lumen of brightness when compared to 1-chip DLP projectors<sup>2</sup>
- Over 20 years of road-tested reliability built into every projector



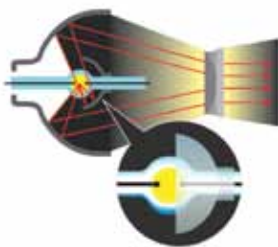
#### Amazing color and white light output

The PowerLite Home Cinema 3010 delivers 2200 lumens of color light output and 2200 lumens of white light output<sup>1</sup> for rich, colorful images. Whether you're projecting images with deep, dark colors or bright whites, you get consistent light output.



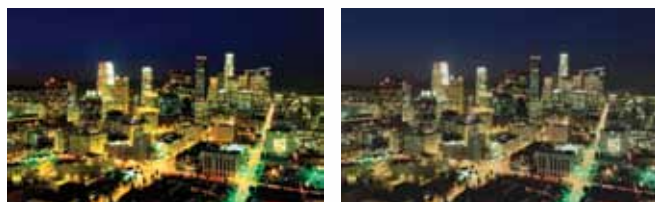
#### Energy-efficient E-TORL® lamp exclusively from Epson

- Delivers more lumens per watt and lasts up to 5000 hours<sup>3</sup>
- Minimizes both light diffraction and light leakage
- Maximizes your viewing time, while minimizing your costs



#### C²Fine™ technology delivers a higher contrast ratio

C²Fine offers smooth, uniform images with exceptional contrast for better image quality. Based on this new phase-compensation technology, light leakage is eliminated, and, when combined with the auto iris, this technology allows for contrast ratios of up to 40,000:1.



▲ With C²Fine

▲ Without C²Fine

Epson — 3LCD

Other — DLP



High color light output

Low color light output

Actual photographs of images taken from two competing projectors run in default mode. Price, resolution and brightness (white light output) are the same for both projectors.

#### Advanced auto Iris technology

Epson Auto Iris adjusts the aperture to provide optimum contrast and brightness for each scene.

#### Better Products for a Better Future™

For more information on Epson's environmental programs, go to [eco.epson.com](http://eco.epson.com)

#### Eco Features

- RoHS compliant
- Recyclable product<sup>4</sup>
- Epson America, Inc. is a SmartWay<sup>SM</sup> Transport Partner<sup>5</sup>



## Amazing 3D performance

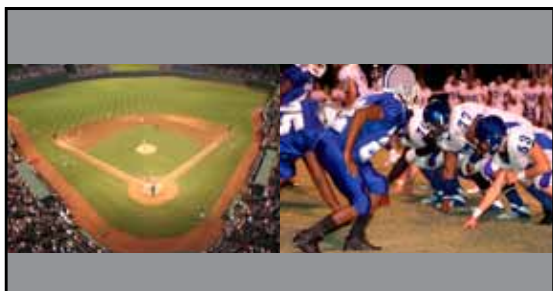
### Bright 3D drive technology

Enjoy thrilling 3D adventures right in the comfort of your living room. Featuring Bright 3D Drive technology, Epson's 480 Hz drive system minimizes the blackout time of 3D glasses and provides greater brightness of 3D images.



### Split Screen<sup>®</sup> feature

Project two images (video or still) side-by-side from two different sources simultaneously in 2D mode. Choose from three layout options. You can swap the images, choose the source for the audio and even display closed captioning if the source signal includes it.



Layout Option 1: 50-50% Split Screen



Layout Option 2: Main image on left



Layout Option 3: Main image on right

### PowerLite Home Cinema 3010 Features

- **A true cinematic experience** — 2D and 3D, Full HD 1080p technology puts you right in the middle of exciting, lifelike adventures
- **Super bright and true-to-life colors** — 2200 lumens color and white light output<sup>1</sup>, and a contrast ratio of up to 40,000:1
- **Rich, vibrant color and reliable performance** — 3LCD, 3-chip technology
- **Captivating sound** — two built-in 10 W stereo speakers for amazing audio
- **Sleek design** — fits in any setting
- **Split screen feature** — project two images side-by-side from two different sources in 2D mode
- **3D Glasses** — includes two pairs of active shutter 3D glasses
- **Outstanding support** — two-year limited warranty; two-business-day replacement with free shipping<sup>7</sup>

### New innovative horizontal keystone correction

- Create perfectly rectangular images from unique positioning of the projector
- Horizontal (+/- 30 degrees) keystone correction for the ultimate in positioning flexibility
- Project images without having to put a stand or table in the center of the room

### 3D glasses

Includes two pairs of active shutter 3D glasses.



### Captivating sound

Enjoy amazing audio with two built-in 10 W stereo speakers.