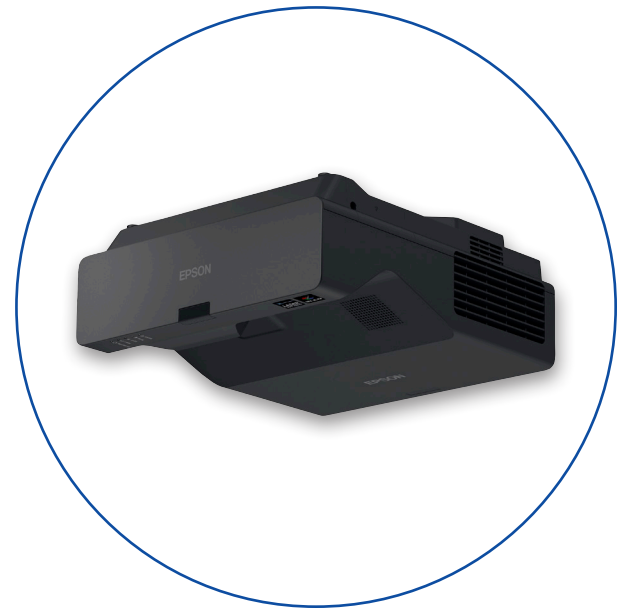


PowerLite® 775F

1080p 3LCD Ultra Short Throw
Lamp-Free Laser Display



The bold, bright, flexible display solution for impactful digital signage.



Best-in-Class Color Brightness¹ with 3-chip 3LCD technology — 4,100 lumens of color and white brightness²

Incredible image quality — Full HD 1080p resolution for amazing clarity and readability

No lamps to replace ever — solid-state, 20,000-hour, virtually maintenance-free laser light source³

Easily programmable with the built-in media player — which includes templates, effects, color filters and customizable options; playlist and playback functions allow for seamless content management for single or multiple PowerLite projectors

Built-in wireless networking with enterprise-level security — additionally, you can connect with Miracast®, which supports software-free, peer-to-peer wireless connectivity

Easily project wall-sized images — built-in edge blending and split screen⁴ features for easy, scalable projection

Convenient ultra short throw design — displays large, true-to-life images up to 150" from less than two feet away

Simple, flexible installation — 360-degree placement capabilities; mount or place the projector in any position, from landscape to portrait

Easy access and maintenance — with remote management and control tools

Flexible display — 16:9 display with additional support for ultra wide 16:6 and 21:9 format makes the display ideal for large, multi-device, split screen images⁴

Specifications

Projection System RGB liquid crystal shutter projection system

Driving Method Poly-Silicon TFT Active Matrix

Pixel Number 2,073,600 dots (1920 x 1080) x 3

Color Brightness² Color Light Output: 4,100 lumens

White Brightness² White Light Output: 4,100 lumens

Aspect Ratio 16:9 (native); 16:6, 4:3, 16:10, 21:9

Image Size (Projection Distance)

Without Mount:

49" – 123" (12.8" – 35.2") 4:3

60" – 150" (12.8" – 35.2") 16:9

55" – 139" (12.8" – 35.2") 16:10

56" – 140" (12.8" – 35.2") 16:6

57" – 142.5" (12.8" – 35.2") 21:9

With ELPMB62 Mount:

58" – 117" (15.5" – 33.6") 4:3

71" – 143" (15.5" – 33.6") 16:9

65" – 132" (15.5" – 33.6") 16:10

66" – 133" (15.5" – 33.6") 16:6

67" – 135" (15.5" – 33.6") 21:9

Display Resolution 1080p (1920 x 1080)

Light Source Laser Diode

Laser Light Source Life³

Normal Mode: Up to 20,000 hours

Extended Mode: Up to 30,000 hours

Throw Ratio Range 0.25 (Zoom: Wide), 0.35 (Zoom: Tele)

Size (Projected Distance)

60" – 150" [12.8" – 35.2"] (Zoom: Wide) 16:9

56" – 140" [12.8" – 35.2"] (Zoom: Tele) 16:6

Keystone Correction Manual Vertical: ±3 degrees;

Horizontal: ±3 degrees

Dynamic Contrast Ratio Over 2,500,000:1

Color Reproduction Up to 1.07 billion colors

Foot Adjuster

Vertical: -0.8 to +0.8 degrees

Horizontal: -0.8 to +0.8 degrees

Modes

Dynamic, Presentation, Cinema, sRGB, DICOM SIM, Multi-Projection

Projection Lens

Type Digital zoom, Focus (manual)

F-Number 1.6

Focal Length 3.7 mm

Zoom Ratio 1.00 – 1.35 (digital zoom)

Software

In addition to compatibility with Epson's standard suite of software, this product has a direct playback function via USB.

Works with:

- Epson® Projector Content Manager Software (visit our support pages for the latest version)

- Epson Creative Projection application

Interfaces

3x HDMI®

1x Analog VGA 15-pin (in)

1x RCA Composite

1x Analog VGA 15-pin (input/monitor out)

3x Stereo Mini In

1x Stereo Mini Out

1x RS-232C Control Port

1 x Type USB-A (Powered 5 V, 2 A)

1 USB-A type for wireless adapter

2 x Type USB-B (USB display with audio)

1x Wired LAN RJ-45

Wireless Support for Built-In WLAN Adapter: Wireless

802.11 b/g/n/ac

IEEE 802.11 b (2.4 GHz): 11 Mbps*

IEEE 802.11 g (2.4 GHz): 54 Mbps*

IEEE 802.11 n (2.4 GHz): 72.2 Mbps*

IEEE 802.11 a (5 GHz): 54 Mbps*

IEEE 802.11 n (5 GHz): 150 Mbps*

IEEE 802.11 ac (5 GHz): 325 Mbps*

Other

Operating Temperature 32 °F to 104 °F (0 °C to 40 °C) (20% – 80% humidity, no condensation)

Power Supply Voltage 100 V – 240 V AC ±10%, 50/60 Hz

Power Consumption

Normal Mode: 277 W

Quiet Mode: 214 W, Quiet Mode Extended 208 W

Standby Mode: 2.0 W

Energy-Saving Mode: 0.5 W

Fan Noise

Normal Mode: 37 dB

Quiet Mode: 27 dB

Security Enterprise Level Security Encryption

Country of Origin China

Dimensions (W x D x H)

Projector (Including Feet) 14.1" x 6.4" x 15.6"

Weight 12.5 lb

Remote Control

Features Source Search, HDMI, Computer, USB, LAN, ID, Default, User, E-Zoom, Color Mode, Aspect, A/V Mute, Split, Freeze, Home, Auto, ESC, Menu, Volume, User, Right, Left, Up, Down arrows

Operating Angle

Front: Right/Left: -30 to +30 degrees

Upper/Lower: 0 to +60 degrees

Rear: Right/Left: -55 to +55 degrees

Upper/Lower: +75 to +15 degrees

Operating Distance 20 ft (6 m)



* These modes and actual data throughputs depend on supported wireless mode of source devices and/or environmental conditions.

Eco Features

RoHS compliant

Recyclable product⁵

Epson America, Inc. is a SmartWay® Transport Partner⁶

Support

Epson ConnectionSM

Pre-sales support: U.S. and Canada 800-463-7766

Internet website: www.epson.com

Service Programs 3-year projector limited warranty or 20,000 hours, whichever comes first.

Epson Road Service program dedicated toll-free support (U.S. and Canada only)

What's Included

PowerLite 775F, Quick Setup Guide, projector remote control, 2x AA batteries, 6' power cord, projector feet

Ordering Information

PowerLite 775F	V11HA83120
Ultra Short Throw Wall Mount (white)	V12HA06A05
Wireless LAN Adapter (ELPAP11)	V12H005A02

¹ Color brightness measured per IDMS 15.4. Additional colors and picture modes tested. Top-selling Epson 3LCD projectors vs. comparable top-selling 1-chip DLP projectors based on NPD sales data for October 2019 – September 2020. COLOR BRIGHTNESS WILL VARY BASED ON USAGE CONDITIONS. | ² Color brightness (color light output) and white brightness (white light output) will vary depending on usage conditions. Color light output measured in accordance with IDMS 15.4; white light output measured in accordance with ISO 21118. | ³ No required maintenance for the light source for up to 20,000 hours. Approximate time until brightness decreases 50% from first usage. Measured by acceleration test assuming use of 0.04 – 0.20 mg/m³ of particulate matter. Time varies depending on usage conditions and environment. Replacement of parts other than the light source may be required in a shorter period. | ⁴ Consult your user manual for split screen input combinations. | ⁵ For convenient and reasonable recycling options, visit www.epson.com/recycle | ⁶ SmartWay is an innovative partnership of the U.S. Environmental Protection Agency that reduces greenhouse gases and other air pollutants and improves fuel efficiency.

Learn more about how our products can empower your institution. Visit us at www.epson.com/foreducation



Epson America, Inc.
3131 Katella Ave., Los Alamitos, CA 90720

Epson Canada Limited
185 Renfrew Drive, Markham, Ontario L3R 6G3

www.epson.com
www.epson.ca

Specifications and terms are subject to change without notice. EPSON and PowerLite are registered trademarks. The EPSON logo is a registered logomark of Seiko Epson Corporation. Epson Connection is a service mark of Epson America, Inc. SmartWay is a registered trademark of the U.S. Environmental Protection Agency. Miracast® is a registered trademark of Wi-Fi Alliance®. All other product and brand names are trademarks and/or registered trademarks of their respective companies. Epson disclaims any and all rights in these marks. Copyright 2023 Epson America, Inc. Com-SS-Oct-13 CPD-62992R1 3/23

Contact:

