

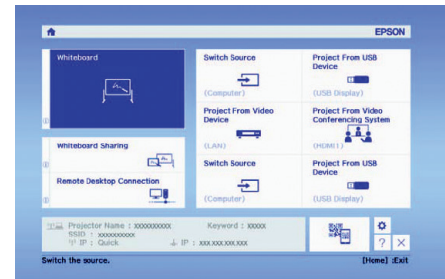
BrightLink® Pro 1450Ui/1460Ui

Get Started with BrightLink Pro

BrightLink Pro is a meeting room and classroom productivity tool that allows you to create a digital whiteboard wherever you need it. Add new blank pages and keep writing instead of erasing your ideas. Insert images, project your content from smartphones, tablets, or laptops, and add annotations. Save your notes and ideas, and share them via email without a computer.

Using the Home screen

Use the Home screen to quickly access Whiteboard mode, switch the active source, and select other options. You can access the Home screen at any time by using the **Home** button on the remote. See the online BrightLink Pro *User's Guide* for more information.



What would you like to do?

Start writing

Draw on the projected screen with the interactive pen or your finger.



Project from any source

Import content from a connected device directly to your whiteboard.



Use your mobile device

Connect your mobile device and display your content on the screen.



Interact with your computer

View your desktop and use the interactive pen as a mouse.



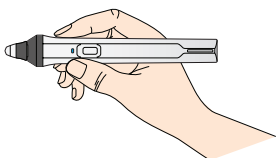
Note: Some features of BrightLink Pro require additional software or prior configuration by the installer or network administrator. For more information, see the online BrightLink Pro *User's Guide*.

Start writing

- 1** Press the Whiteboard button to turn on the projector.



- 2** Pick up the interactive pen, or touch the board with your finger.

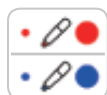


- 3** Start writing!



Running out of room? Add a page!

You can add up to 50 new pages to your whiteboard. Tap the thumbnails at the bottom of the screen to switch between pages.



Add interest by changing colors

Tap a pen color to select the active color. Tap the down arrow next to a pen to choose a custom color. Tap the smaller or larger circle to choose a thin or thick line.



Wipe away mistakes with the eraser

Tap the Eraser icon or press the button on the pen to enter eraser mode.



Duplicate the page

Tap the Duplicate Page icon to create a duplicate of the current page as a new page.

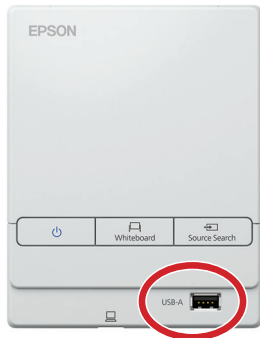


Not sure what that icon does?

Tap the Help icon to display an on-screen guide to the whiteboard icons.

Open content from a USB or network drive

- 1 Insert a USB flash drive in the control pad (or use a networked drive).



- 2 Tap the Open icon to select and display a JPG, PNG, PDF, or EWF file.



- 3 Use the interactive pen or your finger to add notes.

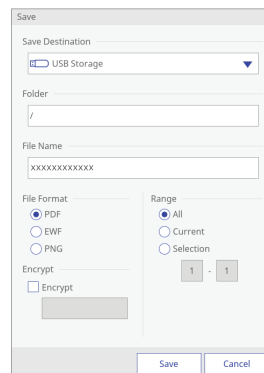


Save your whiteboard notes or share them via email

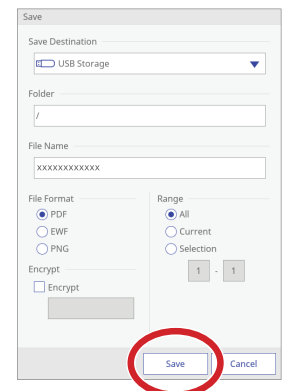
- 1 Tap the Mail or Save icon on the bottom toolbar.



- 2 Select your settings.



- 3 Tap **Save** to save your notes or **Send** to send via email.

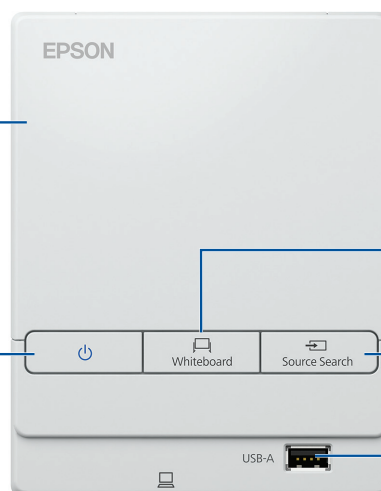


Control Pad functions

Remove the top cover for additional connections. See the online BrightLink Pro *User's Guide* for more information.

Turn projector on/off

Connect USB cable to computer (on bottom of Control Pad)



Select whiteboard mode (and turn on the projector if it is off)

Select from various input sources connected to the projector

Connect USB flash drive

Use your mobile device

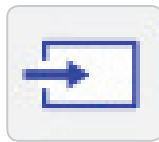
- 1 Connect your Android™ or iOS device to the projector's wireless network.



- 2 Download and launch the Epson iProjection™ app on your device (see below), select the projector, and display your content.



- 3 Tap the Source Select icon to switch to the LAN source.



- 4 Start projecting and annotating your content!



Download the Epson iProjection App

Search for "Epson iProjection" on Google Play or the App Store to download the Epson iProjection app. Visit www.epson.com/iprojection for more information.

With Epson iProjection, you can:

- Display documents, images and even browse web pages
- Annotate directly from your device or BrightLink Pro
- Capture your notes and then save, print or share via email

Project from any source

- 1 Project an image from your connected device. (To connect your mobile device, see “Use your mobile device.”)
- 2 Tap the Source Select icon on the bottom toolbar to select the input source.
- 3 Use the interactive pen or your finger to add notes.



Take a snapshot

Tap the camera icon to save your image and notes as a new screen on the digital whiteboard.



Print your notes

Tap the Print icon to print the displayed screen on a connected printer (if available).



Save your notes

Tap the Save icon to save the image and notes as a single file.



Split the screen

Tap the Split Screen icon to project two different sources side-by-side — even a video conference.



Share the whiteboard

Tap the Share icon to allow multiple devices to draw on the whiteboard

Visit www.epson.com/brightlinkdownloads (U.S.), www.epson.ca/brightlinkdownloads (Canada), or www.epson.com.jm/support (Latin America) for manuals, FAQs, support information, and more!

Interact with your computer

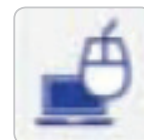
- 1** Connect your computer to the control pad using the provided USB cable.



- 2** Tap the Source Select icon to select the computer's source.



- 3** Select the PC Interactive icon to use the interactive pen or your finger as a mouse.



Install Easy Interactive Driver (Mac)

To use the pen or finger as a mouse, Mac users must install the Easy Interactive Driver. To install the software, use the provided “EPSON Projector Software for Easy Interactive Function” CD or download the most up-to-date version from the Epson support site.

Launch programs

You can use the pen to launch any program on your computer and navigate your file system, right on the screen.

Browse the web

Browse the web in any browser; view web pages, download files, and view videos.

Play videos

Play videos on your computer and display them on the screen.

Use the pen/finger as a mouse

Mouse command	Pen action
Click	Tap
Double-click	Double tap
Click and drag	Tap and drag
Move cursor	Hover over board
Right-click	Click pen button Tap and hold finger for 3 seconds

Need help?

The Epson® PrivateLine® service is for you!

All you have to do is call (800) 637-7661. This service is available for the duration of your warranty period.

You may also speak with a projector support specialist by dialing (562) 276-4394 (U.S) or (905) 709-3839 (Canada).

Support hours are 6 AM to 8 PM, Pacific Time, Monday through Friday and 7 AM to 4 PM, Pacific Time, Saturday. Days and hours of support are subject to change without notice. Toll or long distance charges may apply.

EPSON®
EXCEED YOUR VISION

EPSON is a registered trademark, Epson iProjection is a trademark, and EPSON Exceed Your Vision is a registered logomark of Seiko Epson Corporation. BrightLink and PrivateLine are registered trademarks of Epson America, Inc.

Mac is a trademark of Apple Inc., registered in the U.S. and other countries. App Store is a service mark of Apple Inc.

Android and Google Play are trademarks of Google inc.

General Notice: Other product names used herein are for identification purposes only and may be trademarks of their respective owners. Epson disclaims any and all rights in those marks.

This information is subject to change without notice.

© 2016 Epson America, Inc., 9/16

CPD-52485



413315500