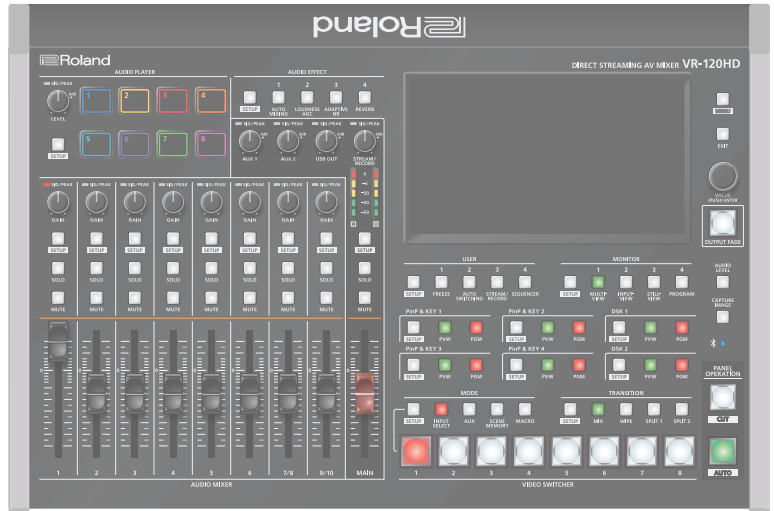


DIRECT STREAMING AV MIXER VR-120HD

Remote Control Guide



Contents

| | |
|--|-----------|
| MIDI Implementation | 2 |
| 1. MIDI Messages Received at MIDI IN | 2 |
| 2. Parameter Address Map | 3 |
| 3. Supplementary Material | 39 |
| MIDI Implementation Chart | 40 |
| LAN/RS-232 Command Reference | 41 |
| LAN Interface | 41 |
| RS-232 Interface | 41 |
| Command Format | 42 |
| List of Commands | 43 |

MIDI Implementation

Model: VR-120HD
 Date: September 26, 2023
 Version: 1.10

| Symbol | Item | Setting Range |
|--------|--------------|---------------|
| n | MIDI Channel | Fixed at 00H |

1. MIDI Messages Received at MIDI IN

System Exclusive Messages

| Status | Data Byte | Status |
|--------|-----------------|--------|
| F0H | iiH,ddH,...,eeH | F7H |

F0H: Status of system exclusive message
 ii= ID number: This is the ID to recognize manufacturer of the exclusive message (manufacturer ID). The manufacturer ID of Roland is 41H. The ID numbers of 7EH and 7FH are expansion of MIDI standards and used as universal non-realtime message (7EH) of universal realtime message (7FH).
 dd,...,ee= data: 00H–7FH (0–127)
 F7H: EOX (end of exclusive)

Data Request 1 (RQ1)

This is the message to request of "send data" to the connected device. Specify data type and amount using address and size. When this is received, the unit sends the requested data as "Data Set 1 (DT1)" message in case the unit is in status where the sending of data is possible and requested address and size are appropriate. If not, the unit sends nothing.

| Status | Data Byte | Status |
|--------|---|--------|
| F0H | 41H, 10H, 00H, 00H, 00H, 00H, 25H, 11H, aaH, bbH, ccH, ssH, ttH, uuH, sum | F7H |

| Byte | Explanation |
|------|---------------------------------|
| F0H | Exclusive Status |
| 41H | Manufacturer ID (Roland) |
| 10H | Device ID |
| 00H | 1st byte of model ID (VR-120HD) |
| 00H | 2nd byte of model ID (VR-120HD) |
| 00H | 3rd byte of model ID (VR-120HD) |
| 00H | 4th byte of model ID (VR-120HD) |
| 25H | 5th byte of model ID (VR-120HD) |
| 11H | Command ID (RQ1) |
| aaH | Address upper byte |
| bbH | Address middle byte |
| ccH | Address lower byte |
| ssH | Size upper byte |
| ttH | Size middle byte |
| uuH | Size lower byte |
| sum | Checksum |
| F7H | EOX (end of exclusive) |

* Depending on the data type, the amount of single-time transmission is specified. It is necessary to execute data request according to the specified first address and size. Refer to the "2. Parameter Address Map" (p. 3) for address and size.
 * See "Example of an Exclusive Message and Calculating a Checksum" (p. 39) for checksum.

Data Set 1 (DT1)

This is the message of actual data transmission. Use this when you want to set data to the unit.

| Status | Data Byte | Status |
|--------|---|--------|
| F0H | 41H, 10H, 00H, 00H, 00H, 00H, 25H, 12H, aaH, bbH, ccH, ddH, ..., eeH, sum | F7H |

| Byte | Explanation |
|------|---|
| F0H | Exclusive Status |
| 41H | Manufacturer ID (Roland) |
| 10H | Device ID |
| 00H | 1st byte of model ID (VR-120HD) |
| 00H | 2nd byte of model ID (VR-120HD) |
| 00H | 3rd byte of model ID (VR-120HD) |
| 00H | 4th byte of model ID (VR-120HD) |
| 25H | 5th byte of model ID (VR-120HD) |
| 12H | Command ID (DT1) |
| aaH | Address upper byte |
| bbH | Address middle byte |
| ccH | Address lower byte |
| ddH | Data: actual data to transmit. Multiple byte data is sent in address order. |
| : | : |
| eeH | Data |
| sum | Checksum |
| F7H | EOX (end of exclusive) |

* Depending on the data type, the amount of single-time transmission is specified. It is necessary to execute data request according to the specified first address and size. Refer to the "2. Parameter Address Map" (p. 3) for address and size.
 * See "Example of an Exclusive Message and Calculating a Checksum" (p. 39) for checksum.
 * Data exceeding 256 bytes should be divided into packets of 256 bytes or smaller. If you send data set 1 successively, set interval of 20 msec or longer between packets.

2. Parameter Address Map

| Start Address | Description |
|---------------|----------------------------------|
| 00H 00H 00H | Video Parameter Area |
| 01H 00H 00H | Audio Parameter Area |
| 02H 00H 00H | System Parameter Area |
| 0AH 00H 00H | Other Parameter Area |
| 0CH 00H 00H | Tally Parameter Area |
| 10H 00H 00H | Video Parameter (Scene Memory 1) |
| 11H 00H 00H | Audio Parameter (Scene Memory 1) |
| 12H 00H 00H | Video Parameter (Scene Memory 2) |
| 13H 00H 00H | Audio Parameter (Scene Memory 2) |
| 14H 00H 00H | Video Parameter (Scene Memory 3) |
| 15H 00H 00H | Audio Parameter (Scene Memory 3) |
| 16H 00H 00H | Video Parameter (Scene Memory 4) |
| 17H 00H 00H | Audio Parameter (Scene Memory 4) |

| Start Address | Description |
|---------------|-----------------------------------|
| 18H 00H 00H | Video Parameter (Scene Memory 5) |
| 19H 00H 00H | Audio Parameter (Scene Memory 5) |
| 1AH 00H 00H | Video Parameter (Scene Memory 6) |
| 1BH 00H 00H | Audio Parameter (Scene Memory 6) |
| 1CH 00H 00H | Video Parameter (Scene Memory 7) |
| 1DH 00H 00H | Audio Parameter (Scene Memory 7) |
| 1EH 00H 00H | Video Parameter (Scene Memory 8) |
| 1FH 00H 00H | Audio Parameter (Scene Memory 8) |
| : | : |
| 4EH 00H 00H | Video Parameter (Scene Memory 32) |
| 4FH 00H 00H | Audio Parameter (Scene Memory 32) |
| 60H 00H 00H | Memory Name |

● Video Parameter Area

○ VIDEO ASSIGN

| Address | Parameter Name | Sys.Ex.Value | Meaning of Value |
|-------------|------------------------------|--------------|--|
| 00H 00H 00H | Input 1 Assign | 00H-20H | HDMI In 1-6, SDI In 1-6, Still 1-16, Video Player, Stream/Record Status 1, Stream/Record Status 2, Date&time |
| 00H 00H 01H | Input 2 Assign | 00H-20H | HDMI In 1-6, SDI In 1-6, Still 1-16, Video Player, Stream/Record Status 1, Stream/Record Status 2, Date&time |
| 00H 00H 02H | Input 3 Assign | 00H-20H | HDMI In 1-6, SDI In 1-6, Still 1-16, Video Player, Stream/Record Status 1, Stream/Record Status 2, Date&time |
| 00H 00H 03H | Input 4 Assign | 00H-20H | HDMI In 1-6, SDI In 1-6, Still 1-16, Video Player, Stream/Record Status 1, Stream/Record Status 2, Date&time |
| 00H 00H 04H | Input 5 Assign | 00H-20H | HDMI In 1-6, SDI In 1-6, Still 1-16, Video Player, Stream/Record Status 1, Stream/Record Status 2, Date&time |
| 00H 00H 05H | Input 6 Assign | 00H-20H | HDMI In 1-6, SDI In 1-6, Still 1-16, Video Player, Stream/Record Status 1, Stream/Record Status 2, Date&time |
| 00H 00H 06H | Input 7 Assign | 00H-20H | HDMI In 1-6, SDI In 1-6, Still 1-16, Video Player, Stream/Record Status 1, Stream/Record Status 2, Date&time |
| 00H 00H 07H | Input 8 Assign | 00H-20H | HDMI In 1-6, SDI In 1-6, Still 1-16, Video Player, Stream/Record Status 1, Stream/Record Status 2, Date&time |
| 00H 00H 08H | HDMI Out 1 Assign | 00H-06H | Program, Sub Program, Preview, Aux, Multi-View, Input-View, Still-View |
| 00H 00H 09H | HDMI Out 2 Assign | 00H-06H | Program, Sub Program, Preview, Aux, Multi-View, Input-View, Still-View |
| 00H 00H 0AH | HDMI Out 3 Assign | 00H-06H | Program, Sub Program, Preview, Aux, Multi-View, Input-View, Still-View |
| 00H 00H 0BH | SDI Out 1 Assign | 00H-06H | Program, Sub Program, Preview, Aux, Multi-View, Input-View, Still-View |
| 00H 00H 0CH | SDI Out 2 Assign | 00H-06H | Program, Sub Program, Preview, Aux, Multi-View, Input-View, Still-View |
| 00H 00H 0DH | SDI Out 3 Assign | 00H-06H | Program, Sub Program, Preview, Aux, Multi-View, Input-View, Still-View |
| 00H 00H 0EH | USB Out Assign | 00H-06H | Program, Sub Program, Preview, Aux, Multi-View, Input-View, Still-View |
| 00H 00H 0FH | Stream/Record Assign | 00H-06H | Program, Sub Program, Preview, Aux, Multi-View, Input-View, Still-View |
| 00H 00H 10H | LCD Monitor Assign | 00H-06H | Program, Sub Program, Preview, Aux, Multi-View, Input-View, Still-View |
| 00H 00H 11H | Aux Source | 00H-24H | HDMI In 1-6, SDI In 1-6, Still 1-16, Video Player, Input 1-8 |
| 00H 00H 12H | Program Layer PinP&Key 1 | 00H-01H | Disable, Enable |
| 00H 00H 13H | Program Layer PinP&Key 2 | 00H-01H | Disable, Enable |
| 00H 00H 14H | Program Layer PinP&Key 3 | 00H-01H | Disable, Enable |
| 00H 00H 15H | Program Layer PinP&Key 4 | 00H-01H | Disable, Enable |
| 00H 00H 16H | Program Layer DSK 1 | 00H-01H | Disable, Enable |
| 00H 00H 17H | Program Layer DSK 2 | 00H-01H | Disable, Enable |
| 00H 00H 18H | Sub Program Layer PinP&Key 1 | 00H-01H | Disable, Enable |
| 00H 00H 19H | Sub Program Layer PinP&Key 2 | 00H-01H | Disable, Enable |
| 00H 00H 1AH | Sub Program Layer PinP&Key 3 | 00H-01H | Disable, Enable |
| 00H 00H 1BH | Sub Program Layer PinP&Key 4 | 00H-01H | Disable, Enable |
| 00H 00H 1CH | Sub Program Layer DSK 1 | 00H-01H | Disable, Enable |
| 00H 00H 1DH | Sub Program Layer DSK 2 | 00H-01H | Disable, Enable |
| 00H 00H 1EH | Aux Layer PinP&Key 1 | 00H-02H | Off, PGM Sync, On |
| 00H 00H 1FH | Aux Layer PinP&Key 2 | 00H-02H | Off, PGM Sync, On |
| 00H 00H 20H | Aux Layer PinP&Key 3 | 00H-02H | Off, PGM Sync, On |
| 00H 00H 21H | Aux Layer PinP&Key 4 | 00H-02H | Off, PGM Sync, On |

| Address | Parameter Name | Sys.Ex.Value | Meaning of Value |
|-------------|-----------------|--------------|-------------------|
| 00H 00H 22H | Aux Layer DSK 1 | 00H-02H | Off, PGM Sync, On |
| 00H 00H 23H | Aux Layer DSK 2 | 00H-02H | Off, PGM Sync, On |

○ Video Input (HDMI)

* xxH: 01H-06H (HDMI In 1-6)

| Address | Parameter Name | Sys.Ex.Value | Meaning of Value |
|--------------------|----------------|-------------------------|---|
| 00H xxH 00H | Flicker Filter | 00H-01H | Off, On |
| 00H xxH 01H | Flip H | 00H-01H | Off, On |
| 00H xxH 02H | Flip V | 00H-01H | Off, On |
| 00H xxH 03H | EDID | 00H-0BH | Internal, SVGA (800x600), XGA (1024x768), WXGA (1280x800), FWXGA (1366x768), SXGA (1280x1024), SXGA+ (1400x1050), UXGA (1600x1200), WUXGA (1920x1200), 720p, 1080i, 1080p |
| 00H xxH 04H 05H | Zoom | 00H 64H-4EH 10H | 10.0-1000.0% |
| 00H xxH 06H | Scaling Type | 00H-04H | Full, Letter Box, Crop, Dot By Dot, Manual |
| 00H xxH 07H 08H | Manual Size H | 70H 30H-00H 00H-0FH 50H | -2000-0-2000 |
| 00H xxH 09H 0AH | Manual Size V | 70H 30H-00H 00H-0FH 50H | -2000-0-2000 |
| 00H xxH 0BH 0CH | Position H | 71H 00H-00H 00H-0FH 00H | -1920-0-1920 |
| 00H xxH 0DH 0EH | Position V | 76H 50H-00H 00H-09H 30H | -1200-0-1200 |
| 00H xxH 0FH | Brightness | 60H-00H-1FH | -32-0-31 |
| 00H xxH 10H | Contrast | 60H-00H-1FH | -32-0-31 |
| 00H xxH 11H | Saturation | 60H-00H-1FH | -32-0-31 |
| 00H xxH 12H | Red | 40H-00H-3FH | -64-0-63 |
| 00H xxH 13H | Green | 40H-00H-3FH | -64-0-63 |
| 00H xxH 14H | Blue | 40H-00H-3FH | -64-0-63 |
| 00H xxH 15H | Color Space | 00H-04H | Auto, RGB(0-255), RGB(16-235), YPbPr(SD), YPbPr(HD) |
| 00H xxH 16H | Test Pattern | 00H-0CH | Off, Color Bars 75%, Color Bars 100%, Ramp, Step, Hatch, Diamond, Circle, Color Bars 75%-SP, Color Bars 100%-SP, Ramp-SP, Step-SP, Hatch-SP |

○ Video Input (SDI)

* xxH: 07H-0CH (SDI In 1-6)

| Address | Parameter Name | Sys.Ex.Value | Meaning of Value |
|-------------|----------------|--------------|------------------|
| 00H xxH 00H | Flip H | 00H-01H | Off, On |
| 00H xxH 01H | Flip V | 00H-01H | Off, On |
| 00H xxH 02H | Brightness | 60H-00H-1FH | -32-0-31 |
| 00H xxH 03H | Contrast | 60H-00H-1FH | -32-0-31 |
| 00H xxH 04H | Saturation | 60H-00H-1FH | -32-0-31 |

○ Video Input (Video Player)

0DH

| Address | Parameter Name | Sys.Ex.Value | Meaning of Value |
|-------------|----------------|--------------|------------------|
| 00H 0DH 00H | Flip H | 00H-01H | Off, On |
| 00H 0DH 01H | Flip V | 00H-01H | Off, On |

○ VIDEO OUTPUT (HDMI)

* xxH: 0EH-10H (HDMI OUT 1-3)

| Address | Parameter Name | Sys.Ex.Value | Meaning of Value |
|-------------|-------------------|--------------|---|
| 00H xxH 00H | Color Space | 00H-03H | YPbPr (4: 4: 4), YPbPr (4: 2: 2), RGB (0-255), RGB (16-235) |
| 00H xxH 01H | DVI-D/HDMI Signal | 00H-01H | HDMI, DVI-D |
| 00H xxH 02H | Brightness | 40H-00H-3FH | -64-0-63 |
| 00H xxH 03H | Contrast | 40H-00H-3FH | -64-0-63 |
| 00H xxH 04H | Saturation | 40H-00H-3FH | -64-0-63 |
| 00H xxH 05H | Red | 40H-00H-3FH | -64-0-63 |
| 00H xxH 06H | Green | 40H-00H-3FH | -64-0-63 |
| 00H xxH 07H | Blue | 40H-00H-3FH | -64-0-63 |

| Address | Parameter Name | Sys.Ex.Value | Meaning of Value |
|-------------|----------------------|--------------|------------------|
| 00H xxH 08H | External Rec Control | 00H-01H | Off, On |

○ VIDEO OUTPUT (SDI)

* xxH: 11H-13H (SDI OUT 1-3)

| Address | Parameter Name | Sys.Ex.Value | Meaning of Value |
|-------------|----------------|--------------|------------------|
| 00H xxH 00H | 3G-SDI Mapping | 00H-01H | Level-A, Level-B |
| 00H xxH 01H | Brightness | 40H-00H-3FH | -64-0-63 |
| 00H xxH 02H | Contrast | 40H-00H-3FH | -64-0-63 |
| 00H xxH 03H | Saturation | 40H-00H-3FH | -64-0-63 |

○ Transition, Mix, Wipe, Split

| Address | Parameter Name | Sys.Ex.Value | Meaning of Value |
|--------------------|-------------------------|-------------------------|--|
| 00H 14H 00H | Transition | 00H-03H | Mix, Wipe, Split 1, Split 2 |
| 00H 14H 01H | Mix Type | 00H-02H | Mix, Fam, Nam |
| 00H 14H 02H | Mix Time | 00H-28H | 0.0-4.0sec |
| 00H 14H 03H | Wipe Type | 00H-07H | Horizontal, Vertical, Upper Left, Upper Right, Lower Left, Lower Right, H-Center, V-Center |
| 00H 14H 04H | Mix Time | 00H-28H | 0.0-4.0sec |
| 00H 14H 05H | Wipe Direction | 00H-02H | Normal, Reverse, Round Trip |
| 00H 14H 06H | Wipe Border Color | 00H-08H | White, Yellow, Cyan, Green, Magenta, Red, Blue, Black, Soft Edge |
| 00H 14H 07H | Wipe Border Width | 00H-0EH | 0-14 |
| 00H 14H 08H | Split 1 Sw | 00H-01H | OFF, ON |
| 00H 14H 09H | Split 1 Type | 00H-01H | SPLIT V, SPLIT H |
| 00H 14H 0AH 0BH | Split 1 PGM/A-Center | 7CH 0CH-00H 00H-03H 74H | -50.0-0.0-50.0% |
| 00H 14H 0CH 0DH | Split 1 PST/B-Center | 7CH 0CH-00H 00H-03H 74H | -50.0-0.0-50.0% |
| 00H 14H 0EH 0FH | Split 1 Center Position | 7CH 0CH-00H 00H-03H 74H | -50.0-0.0-50.0% |
| 00H 14H 10H | Split 1 Border Color | 00H-07H | White, Yellow, Cyan, Green, Magenta, Red, Blue, Black |
| 00H 14H 11H | Split 1 Border Width | 00H-0EH | 0-14 |
| 00H 14H 12H | Split 2 Sw | 00H-01H | OFF, ON |
| 00H 14H 13H | Split 2 Type | 00H-01H | SPLIT V, SPLIT H |
| 00H 14H 14H 15H | Split 2 PGM/A-Center | 7CH 0CH-00H 00H-03H 74H | -50.0-0.0-50.0% |
| 00H 14H 16H 17H | Split 2 PST/B-Center | 7CH 0CH-00H 00H-03H 74H | -50.0-0.0-50.0% |
| 00H 14H 18H 19H | Split 2 Center Position | 7CH 0CH-00H 00H-03H 74H | -50.0-0.0-50.0% |
| 00H 14H 1AH | Split 2 Border Color | 00H-07H | White, Yellow, Cyan, Green, Magenta, Red, Blue, Black |
| 00H 14H 1BH | Split 2 Border Width | 00H-0EH | 0-14 |

○ PinP&Key

* xxH: 15H-18H (PinP&Key 1-4)

| Address | Parameter Name | Sys.Ex.Value | Meaning of Value |
|--------------------|----------------|-------------------------|--|
| 00H xxH 00H | Time | 00H-28H | 0.0-4.0sec |
| 00H xxH 01H | Pgm Sw | 00H-01H | Off, On |
| 00H xxH 02H | Pvw Sw | 00H-01H | Off, On |
| 00H xxH 03H | Source | 00H-24H | Hdmi In 1-6, Sdi In 1-6, Still 1-16, Video Player, Input 1-8 |
| 00H xxH 04H | Type | 00H-03H | PinP, Luminance-White Key, Luminance-Black Key, Chroma Key |
| 00H xxH 05H 06H | Position H | 78H 18H-00H 00H-07H 68H | -100.0-0.0-100.0% |
| 00H xxH 07H 08H | Position V | 78H 18H-00H 00H-07H 68H | -100.0-0.0-100.0% |
| 00H xxH 09H 0AH | Size | 00H 00H-07H 68H | 0.0-100.0% |
| 00H xxH 0BH 0CH | Cropping H | 00H 00H-07H 68H | 0.0-100.0% |
| 00H xxH 0DH 0EH | Cropping V | 00H 00H-07H 68H | 0.0-100.0% |

| Address | Parameter Name | Sys.Ex.Value | Meaning of Value |
|--------------------|------------------|-------------------------|--|
| 00H xxH 0FH | Shape | 00H-02H | Rectangle, Circle, Diamond |
| 00H xxH 10H | Border Color | 00H-08H | White, Yellow, Cyan, Green, Magenta, Red, Blue, Black, Soft Edge |
| 00H xxH 11H | Border Width | 00H-0EH | 0-14 |
| 00H xxH 12H 13H | View Position H | 7CH 0CH-00H 00H-03H 74H | -50.0-0.0-50.0% |
| 00H xxH 14H 15H | View Position V | 7CH 0CH-00H 00H-03H 74H | -50.0-0.0-50.0% |
| 00H xxH 16H 17H | View Zoom | 00H 64H-03H 10H | 100-400% |
| 00H xxH 18H 19H | Key Level | 00H 00H-01H 7FH | 0-255 |
| 00H xxH 1AH 1BH | Key Gain | 00H 00H-01H 7FH | 0-255 |
| 00H xxH 1CH 1DH | Mix Level | 00H 00H-01H 7FH | 0-255 |
| 00H xxH 1EH | Chroma Color | 00H-01H | Green, Blue |
| 00H xxH 1FH | Hue Width | 62H-00H-1EH | -30-0-30 |
| 00H xxH 20H 21H | Hue Fine | 00H 00H-02H 68H | 0-360 |
| 00H xxH 22H 23H | Saturation Width | 7FH 00H-00H 00H-00H 7FH | -128-0-127 |
| 00H xxH 24H 25H | Saturation Fine | 00H 00H-01H 7FH | 0-255 |

○ DSK

* xxH: 19H-1AH (DSK 1, 2)

| Address | Parameter Name | Sys.Ex.Value | Meaning of Value |
|--------------------|------------------|-------------------------|--|
| 00H xxH 00H | Time | 00H-28H | 0.0-4.0sec |
| 00H xxH 01H | Pgm Sw | 00H-01H | Off, On |
| 00H xxH 02H | Pvw Sw | 00H-01H | Off, On |
| 00H xxH 03H | Mode | 00H-02H | Self Key, Alpha Key, External Key |
| 00H xxH 04H | Key Source | 00H-24H | Hdmi In 1-6, Sdi In 1-6, Still 1-16, Video Player, Input 1-8 |
| 00H xxH 05H | Fill Source | 00H-24H | Hdmi In 1-6, Sdi In 1-6, Still 1-16, Video Player, Input 1-8 |
| 00H xxH 06H | Type | 00H-02H | Luminance-White Key, Luminance-Black Key, Chroma Key |
| 00H xxH 07H 08H | Level | 00H 00H-01H 7FH | 0-255 |
| 00H xxH 09H 0AH | Gain | 00H 00H-01H 7FH | 0-255 |
| 00H xxH 0BH 0CH | Mix Level | 00H 00H-01H 7FH | 0-255 |
| 00H xxH 0DH | Chroma Color | 00H-01H | Green, Blue |
| 00H xxH 0EH | Hue Width | 62H-00H-1EH | -30-0-30 |
| 00H xxH 0FH 10H | Hue Fine | 00H 00H-02H 68H | 0-360 |
| 00H xxH 11H 12H | Saturation Width | 7FH 00H-00H 00H-00H 7FH | -128-0-127 |
| 00H xxH 13H 14H | Saturation Fine | 00H 00H-01H 7FH | 0-255 |
| 00H xxH 15H | Fill Type | 00H-01H | Bus, Matte |
| 00H xxH 16H | Matte Color | 00H-07H | White, Yellow, Cyan, Green, Magenta, Red, Blue, Black |
| 00H xxH 17H | Edge Type | 00H-04H | Off, Border, Drop, Shadow, Outline |
| 00H xxH 18H | Edge Color | 00H-07H | White, Yellow, Cyan, Green, Magenta, Red, Blue, Black |
| 00H xxH 19H | Edge Width | 00H-07H | 0-7 |

○ Panel

| Address | Parameter Name | Sys.Ex.Value | Meaning of Value |
|--------------------|---------------------|-----------------|--|
| 00H 1BH 00H | PGM Select | 00H-24H | Hdmi In 1-6, Sdi In 1-6, Still 1-16, Video Player, Input 1-8 |
| 00H 1BH 01H | PST Select | 00H-24H | Hdmi In 1-6, Sdi In 1-6, Still 1-16, Video Player, Input 1-8 |
| 00H 1BH 02H 03H | PGM/PST Fader Level | 00H 00H-0FH 7FH | 0-2047 |
| 00H 1BH 04H | Dissolve Take Type | 00H-01H | Cut, Auto |
| 00H 1BH 05H | Fader Base | 00H-01H | Upper, Lower |

● Audio Parameter Area

○ Audio Fader Assign

00H

| Address | Parameter Name | Sys.Ex.Value | Meaning of Value |
|-------------|----------------|--------------|---|
| 01H 00H 00H | Input Fader 1 | 00H–17H | Audio In 1–6, Audio In 7/8, Audio In 9/10, Usb In, Bluetooth In, Audio Player, HDMI In 1–6, SDI In 1–6, Video Player |
| 01H 00H 01H | Input Fader 2 | 00H–17H | Audio In 1–6, Audio In 7/8, Audio In 9/10, Usb In, Bluetooth In, Audio Player, HDMI In 1–6, SDI In 1–7, Video Player |
| 01H 00H 02H | Input Fader 3 | 00H–17H | Audio In 1–6, Audio In 7/8, Audio In 9/10, Usb In, Bluetooth In, Audio Player, HDMI In 1–6, SDI In 1–8, Video Player |
| 01H 00H 03H | Input Fader 4 | 00H–17H | Audio In 1–6, Audio In 7/8, Audio In 9/10, Usb In, Bluetooth In, Audio Player, HDMI In 1–6, SDI In 1–9, Video Player |
| 01H 00H 04H | Input Fader 5 | 00H–17H | Audio In 1–6, Audio In 7/8, Audio In 9/10, Usb In, Bluetooth In, Audio Player, HDMI In 1–6, SDI In 1–10, Video Player |
| 01H 00H 05H | Input Fader 6 | 00H–17H | Audio In 1–6, Audio In 7/8, Audio In 9/10, Usb In, Bluetooth In, Audio Player, HDMI In 1–6, SDI In 1–11, Video Player |
| 01H 00H 06H | Input Fader 7 | 00H–17H | Audio In 1–6, Audio In 7/8, Audio In 9/10, Usb In, Bluetooth In, Audio Player, HDMI In 1–6, SDI In 1–12, Video Player |
| 01H 00H 07H | Input Fader 8 | 00H–17H | Audio In 1–6, Audio In 7/8, Audio In 9/10, Usb In, Bluetooth In, Audio Player, HDMI In 1–6, SDI In 1–13, Video Player |

○ Audio Input

* xxH: 01H–18H (Audio In 1–6, Audio In 7/8, Audio In 9/10, Usb In, Bluetooth In, Audio Player, HDMI In 1–6, SDI In 1–6, Video Player)

| Address | Parameter Name | Sys.Ex.Value | Meaning of Value |
|---------------------------|----------------------------|--|---|
| 01H xxH 00H | Analog Gain | 00H–44H | 0–68 dB |
| 01H xxH 01H 02H | Digital Gain | 7CH 5CH–00H 00H–03H 24H | -42.0–0.0–42.0dB |
| 01H xxH 03H 04H 05H | Input Level | 7EH 00H 00H, 7FH 79H 60H–00H 00H 00H–00H 00H 64H | -INfdB, -80.0–0.0–10.0dB |
| 01H xxH 06H | Input Mute | 00H–01H | Off, On |
| 01H xxH 07H | Phantom +48V | 00H–01H | Off, On |
| 01H xxH 08H | Pan | 00H–32H–64H | Left–Center–Right |
| 01H xxH 09H | Stereo Link | 00H–01H | Off, On |
| 01H xxH 0AH | Mono | 00H–03H | Off, L Only, R Only, LR Mix |
| 01H xxH 0BH | Solo | 00H–01H | Off, On |
| 01H xxH 0CH | Main Send | 00H–01H | Off, On |
| 01H xxH 0DH | Effect Preset | 00H–04H | Default, Meeting, Interview, Ambient Mic, Windy Field |
| 01H xxH 0EH 0FH | Delay | 00H 00H–27H 08H | 0.0–500.0msec |
| 01H xxH 10H | Reverb Send | 00H–7FH | 0–127 |
| 01H xxH 11H | High Pass Filter 80Hz | 00H–01H | Off, On |
| 01H xxH 12H | Echo Canceller Sw | 00H–01H | Off, On |
| 01H xxH 13H | Echo Canceller Depth | 01H–0AH | 1–10 |
| 01H xxH 14H | Howling Canceller | 00H–01H | Off, On |
| 01H xxH 15H | De-Esser Sw | 00H–01H | Off, On |
| 01H xxH 16H | De-Esser Sens | 00H–64H | 0–100 |
| 01H xxH 17H | De-Esser Depth | 00H–64H | 0–100 |
| 01H xxH 18H | Noise Gate Sw | 00H–01H | Off, On |
| 01H xxH 19H | Noise Gate Threshold | 30H–00H | -80–0dB |
| 01H xxH 1AH | Noise Gate Release | 00H–7FH | 30–5000msec |
| 01H xxH 1BH | Compressor Sw | 00H–01H | Off, On |
| 01H xxH 1CH | Compressor Threshold | 4EH–00H | -50–0dB |
| 01H xxH 1DH | Compressor Ratio | 00H–0DH | 1.00: 1, 1.12: 1, 1.25: 1, 1.40: 1, 1.60: 1, 1.80: 1, 2.00: 1, 2.50: 1, 3.20: 1, 4.00: 1, 5.60: 1, 8.00: 1, 16.0: 1, INF: 1 |
| 01H xxH 1EH | Compressor Attack | 00H–73H | 0.0–100msec |
| 01H xxH 1FH | Compressor Release | 00H–7FH | 30–5000msec |
| 01H xxH 20H | Compressor Makeup Gain | 58H–00H–28H | -40–0–40dB |
| 01H xxH 21H | Equalizer Sw | 00H–01H | Off, On |
| 01H xxH 22H | Equalizer Hi Gain | 04H–7CH | -12.0–12.0dB |
| 01H xxH 23H | Equalizer Hi Frequency | 24H–3EH | 1.00–20.0kHz |
| 01H xxH 24H | Equalizer Lo-Mid Gain | 04H–7CH | -12.0–12.0dB |
| 01H xxH 25H | Equalizer Lo-Mid Frequency | 02H–3EH | 20Hz–20.0kHz |

| Address | Parameter Name | Sys.Ex.Value | Meaning of Value |
|-------------|----------------------------|--------------|-------------------------------|
| 01H xxH 26H | Equalizer Lo-Mid Q | 00H-05H | 0.5, 1.0, 2.0, 4.0, 8.0, 16.0 |
| 01H xxH 27H | Equalizer Hi-Mid Gain | 04H-7CH | -12.0-12.0dB |
| 01H xxH 28H | Equalizer Hi-Mid Frequency | 02H-3EH | 20Hz-20.0kHz |
| 01H xxH 29H | Equalizer Hi-Mid Q | 00H-05H | 0.5, 1.0, 2.0, 4.0, 8.0, 16.0 |
| 01H xxH 2AH | Equalizer Lo Gain | 04H-7CH | -12.0-12.0dB |
| 01H xxH 2BH | Equalizer Lo Frequency | 02H-2AH | 20Hz-2.00kHz |
| 01H xxH 2CH | Voice Changer Sw | 00H-01H | Off, On |
| 01H xxH 2DH | Voice Changer Pitch | 74H-00H-0CH | -12-0-+12 |
| 01H xxH 2EH | Voice Changer Formant | 76H-00H-0AH | -10-0-+10 |
| 01H xxH 2FH | Voice Changer Robot | 00H-01H | Off, On |
| 01H xxH 30H | Voice Changer Mix | 00H-64H | 0-100 |
| 01H xxH 31H | Embedded Audio Channel | 00H-03H | 1/2, 3/4, 5/6, 7/8 |

○ Audio Output Assign

| Address | Parameter Name | Sys.Ex.Value | Meaning of Value |
|-------------|----------------------|--------------|---|
| 01H 20H 00H | Audio Out 1 (XLR) | 00H-03H | Main Bus, Aux 1 Bus, Aux 2 Bus, Monitor |
| 01H 21H 01H | Audio Out 2 (XLR) | 00H-03H | Main Bus, Aux 1 Bus, Aux 2 Bus, Monitor |
| 01H 22H 02H | Audio Out 3 (RCA) | 00H-03H | Main Bus, Aux 1 Bus, Aux 2 Bus, Monitor |
| 01H 20H 03H | Phones Out / Monitor | 00H-02H | Main Bus, Aux 1 Bus, Aux 2 Bus |
| 01H 20H 04H | USB Out | 00H-02H | Main Bus, Aux 1 Bus, Aux 2 Bus |
| 01H 20H 05H | Stream/Record | 00H-02H | Main Bus, Aux 1 Bus, Aux 2 Bus |
| 01H 20H 06H | Audio Record | 00H-02H | Main Bus, Aux 1 Bus, Aux 2 Bus |
| 01H 20H 07H | HDMI Out 1 | 00H-03H | Main Bus, Aux 1 Bus, Aux 2 Bus, Monitor |
| 01H 20H 08H | HDMI Out 2 | 00H-03H | Main Bus, Aux 1 Bus, Aux 2 Bus, Monitor |
| 01H 20H 09H | HDMI Out 3 | 00H-03H | Main Bus, Aux 1 Bus, Aux 2 Bus, Monitor |
| 01H 20H 0AH | SDI Out 1 | 00H-03H | Main Bus, Aux 1 Bus, Aux 2 Bus, Monitor |
| 01H 20H 0BH | SDI Out 2 | 00H-03H | Main Bus, Aux 1 Bus, Aux 2 Bus, Monitor |
| 01H 20H 0CH | SDI Out 3 | 00H-03H | Main Bus, Aux 1 Bus, Aux 2 Bus, Monitor |

○ Audio Main Bus

| Address | Parameter Name | Sys.Ex.Value | Meaning of Value |
|---------------------------|----------------------------|--|--|
| 01H 21H 00H 01H 02H | Level | 7EH 00H 00H, 7FH 79H 60H-00H 00H 00H-00H 00H 64H | -INFdB, -80.0-0.0-10.0dB |
| 01H 21H 03H | Mute | 00H-01H | Off, On |
| 01H 21H 04H | Solo | 00H-01H | Off, On |
| 01H 21H 05H 06H | Delay | 00H 00H-27H 08H | 0.0-500.0msec |
| 01H 21H 07H | Compressor/Limiter Type | 00H-01H | Compressor, Limiter |
| 01H 21H 08H | Compressor/Limiter Sw | 00H-01H | Off, On |
| 01H 21H 09H | Limiter Threshold | 58H-00H | -40-0dB |
| 01H 21H 0AH | Compressor Threshold | 4EH-00H | -50-0dB |
| 01H 21H 0BH | Compressor Ratio | 00H-0DH | 1.00: 1, 1.12: 1, 1.25: 1, 1.40: 1, 1.60: 1, 1.80: 1, 2.00: 1, 2.50: 1, 3.20: 1, 4.00: 1, 5.60: 1, 8.00: 1, 16.0: 1, INF: 1 |
| 01H 21H 0CH | Compressor Attack | 00H-73H | 0.0-100msec |
| 01H 21H 0DH | Compressor Release | 00H-7FH | 30-5000msec |
| 01H 21H 0EH | Compressor Makeup Gain | 58H-00H-28H | -40-0-40dB |
| 01H 21H 0FH | Reverb Level | 00H-7FH | 0-127 |
| 01H 21H 10H | Reverb Sw | 00H-01H | Off, On |
| 01H 21H 11H | Reverb Type | 00H-01H | Room, Hall |
| 01H 21H 12H | Reverb Size | 01H-14H | 1-20 |
| 01H 21H 13H 14H 15H | Reverb Return Level | 7EH 00H 00H, 7FH 79H 60H-00H 00H 00H-00H 00H 64H | -INFdB, -80.0-0.0-10.0dB |
| 01H 21H 16H | Equalizer Sw | 00H-01H | Off, On |
| 01H 21H 17H | Equalizer Hi Gain | 04H-7CH | -12.0-12.0dB |
| 01H 21H 18H | Equalizer Hi Frequency | 24H-3EH | 1.00-20.0kHz |
| 01H 21H 19H | Equalizer Lo-Mid Gain | 04H-7CH | -12.0-12.0dB |
| 01H 21H 1AH | Equalizer Lo-Mid Frequency | 02H-3EH | 20Hz-20.0kHz |
| 01H 21H 1BH | Equalizer Lo-Mid Q | 00H-05H | 0.5, 1.0, 2.0, 4.0, 8.0, 16.0 |
| 01H 21H 1CH | Equalizer Hi-Mid Gain | 04H-7CH | -12.0-12.0dB |

| Address | Parameter Name | Sys.Ex.Value | Meaning of Value |
|--------------------|---|-------------------------|-------------------------------|
| 01H 21H 1DH | Equalizer Hi-Mid Frequency | 02H-3EH | 20Hz-20.0kHz |
| 01H 21H 1EH | Equalizer Hi-Mid Q | 00H-05H | 0.5, 1.0, 2.0, 4.0, 8.0, 16.0 |
| 01H 21H 1FH | Equalizer Lo Gain | 04H-7CH | -12.0-12.0dB |
| 01H 21H 20H | Equalizer Lo Frequency | 02H-2AH | 20Hz-2.00kHz |
| 01H 21H 21H | GEQ Sw | 00H-01H | Off, On |
| 01H 21H 22H 23H | GEQ Gain 25Hz | 7EH 6AH-00H 00H-01H 16H | -15.0-+15.0dB |
| 01H 21H 24H 25H | GEQ Gain 40Hz | 7EH 6AH-00H 00H-01H 16H | -15.0-+15.0dB |
| 01H 21H 26H 27H | GEQ Gain 60Hz | 7EH 6AH-00H 00H-01H 16H | -15.0-+15.0dB |
| 01H 21H 28H 29H | GEQ Gain 100Hz | 7EH 6AH-00H 00H-01H 16H | -15.0-+15.0dB |
| 01H 21H 2AH 2BH | GEQ Gain 160Hz | 7EH 6AH-00H 00H-01H 16H | -15.0-+15.0dB |
| 01H 21H 2CH 2DH | GEQ Gain 250Hz | 7EH 6AH-00H 00H-01H 16H | -15.0-+15.0dB |
| 01H 21H 2EH 2FH | GEQ Gain 400Hz | 7EH 6AH-00H 00H-01H 16H | -15.0-+15.0dB |
| 01H 21H 30H 31H | GEQ Gain 630Hz | 7EH 6AH-00H 00H-01H 16H | -15.0-+15.0dB |
| 01H 21H 32H 33H | GEQ Gain 1kHz | 7EH 6AH-00H 00H-01H 16H | -15.0-+15.0dB |
| 01H 21H 34H 35H | GEQ Gain 1.6kHz | 7EH 6AH-00H 00H-01H 16H | -15.0-+15.0dB |
| 01H 21H 36H 37H | GEQ Gain 2.5kHz | 7EH 6AH-00H 00H-01H 16H | -15.0-+15.0dB |
| 01H 21H 38H 39H | GEQ Gain 4kHz | 7EH 6AH-00H 00H-01H 16H | -15.0-+15.0dB |
| 01H 21H 3AH 3BH | GEQ Gain 6.3Hz | 7EH 6AH-00H 00H-01H 16H | -15.0-+15.0dB |
| 01H 21H 3CH 3DH | GEQ Gain 10kHz | 7EH 6AH-00H 00H-01H 16H | -15.0-+15.0dB |
| 01H 21H 3EH 3FH | GEQ Gain 16kHz | 7EH 6AH-00H 00H-01H 16H | -15.0-+15.0dB |
| 01H 21H 40H | Loudness Auto Gain Control Sw | 00H-01H | Off, On |
| 01H 21H 41H | Integrated Gain Control | 00H-01H | Disable, Enable |
| 01H 21H 42H | Integrated Gain Control Sens | 00H-7FH | 0-127 |
| 01H 21H 43H | Momentary Gain Control | 00H-01H | Disable, Enable |
| 01H 21H 44H | Momentary Gain Control Sens | 00H-7FH | 0-127 |
| 01H 21H 45H | Target LKFS | 5EH-76H | -34--10dB |
| 01H 21H 46H | Adaptive Noise Reduction Sw | 00H-01H | Off, On |
| 01H 21H 47H | Adaptive Noise Reduction Depth | 00H-7FH | 0-127 |
| 01H 21H 48H | Adaptive Noise Reduction Talking Detector | 00H-7FH | 0-127 |
| 01H 21H 49H | Adaptive Noise Reduction Auto Learn | 00H-01H | Disable, Enable |
| 01H 21H 4AH | Lo Frequency Cut Sw | 00H-01H | Off, On |

○ Audio AUX 1 Bus

| Address | Parameter Name | Sys.Ex.Value | Meaning of Value |
|---------------------------|-------------------------|--|--------------------------|
| 01H 22H 00H 01H 02H | Level | 7EH 00H 00H, 7FH 79H 60H-00H 00H 00H-00H 00H 64H | -INFdB, -80.0-0.0-10.0dB |
| 01H 22H 03H | Mute | 00H-01H | Off, On |
| 01H 22H 04H | Solo | 00H-01H | Off, On |
| 01H 22H 05H 06H | Delay | 00H 00H-27H 08H | 0.0-500.0msec |
| 01H 22H 07H | Compressor/Limiter Type | 00H-01H | Compressor, Limiter |
| 01H 22H 08H | Compressor/Limiter Sw | 00H-01H | Off, On |
| 01H 22H 09H | Limiter Threshold | 58H-00H | -40-0dB |
| 01H 22H 0AH | Compressor Threshold | 4EH-00H | -50-0dB |

| Address | Parameter Name | Sys.Ex.Value | Meaning of Value |
|---------------------------|----------------------------|--|---|
| 01H 22H 0BH | Compressor Ratio | 00H–0DH | 1.00: 1, 1.12: 1, 1.25: 1, 1.40: 1, 1.60: 1, 1.80: 1, 2.00: 1, 2.50: 1, 3.20: 1, 4.00: 1, 5.60: 1, 8.00: 1, 16.0: 1, INF: 1 |
| 01H 22H 0CH | Compressor Attack | 00H–73H | 0.0–100msec |
| 01H 22H 0DH | Compressor Release | 00H–7FH | 30–5000msec |
| 01H 22H 0EH | Compressor Makeup Gain | 58H–00H–28H | -40–0–40dB |
| 01H 22H 0FH 10H 11H | Reverb Return Level | 7EH 00H 00H, 7FH 79H 60H–00H 00H 00H–00H 00H 64H | -INFdB, -80.0–0.0–10.0dB |
| 01H 22H 12H | Equalizer Sw | 00H–01H | Off, On |
| 01H 22H 13H | Equalizer Hi Gain | 04H–7CH | -12.0–12.0dB |
| 01H 22H 14H | Equalizer Hi Frequency | 24H–3EH | 1.00–20.0kHz |
| 01H 22H 15H | Equalizer Lo-Mid Gain | 04H–7CH | -12.0–12.0dB |
| 01H 22H 16H | Equalizer Lo-Mid Frequency | 02H–3EH | 20Hz–20.0kHz |
| 01H 22H 17H | Equalizer Lo-Mid Q | 00H–05H | 0.5, 1.0, 2.0, 4.0, 8.0, 16.0 |
| 01H 22H 18H | Equalizer Hi-Mid Gain | 04H–7CH | -12.0–12.0dB |
| 01H 22H 19H | Equalizer Hi-Mid Frequency | 02H–3EH | 20Hz–20.0kHz |
| 01H 22H 1AH | Equalizer Hi-Mid Q | 00H–05H | 0.5, 1.0, 2.0, 4.0, 8.0, 16.0 |
| 01H 22H 1BH | Equalizer Lo Gain | 04H–7CH | -12.0–12.0dB |
| 01H 22H 1CH | Equalizer Lo Frequency | 02H–2AH | 20Hz–2.00kHz |
| 01H 22H 1DH | GEQ Sw | 00H–01H | Off, On |
| 01H 22H 1EH 1FH | GEQ Gain 25Hz | 7EH 6AH–00H 00H–01H 16H | -15.0–+15.0dB |
| 01H 22H 20H 21H | GEQ Gain 40Hz | 7EH 6AH–00H 00H–01H 16H | -15.0–+15.0dB |
| 01H 22H 22H 23H | GEQ Gain 60Hz | 7EH 6AH–00H 00H–01H 16H | -15.0–+15.0dB |
| 01H 22H 24H 25H | GEQ Gain 100Hz | 7EH 6AH–00H 00H–01H 16H | -15.0–+15.0dB |
| 01H 22H 26H 27H | GEQ Gain 160Hz | 7EH 6AH–00H 00H–01H 16H | -15.0–+15.0dB |
| 01H 22H 28H 29H | GEQ Gain 250Hz | 7EH 6AH–00H 00H–01H 16H | -15.0–+15.0dB |
| 01H 22H 2AH 2BH | GEQ Gain 400Hz | 7EH 6AH–00H 00H–01H 16H | -15.0–+15.0dB |
| 01H 22H 2CH 2DH | GEQ Gain 630Hz | 7EH 6AH–00H 00H–01H 16H | -15.0–+15.0dB |
| 01H 22H 2EH 2FH | GEQ Gain 1kHz | 7EH 6AH–00H 00H–01H 16H | -15.0–+15.0dB |
| 01H 22H 30H 31H | GEQ Gain 1.6kHz | 7EH 6AH–00H 00H–01H 16H | -15.0–+15.0dB |
| 01H 22H 32H 33H | GEQ Gain 2.5kHz | 7EH 6AH–00H 00H–01H 16H | -15.0–+15.0dB |
| 01H 22H 34H 35H | GEQ Gain 4kHz | 7EH 6AH–00H 00H–01H 16H | -15.0–+15.0dB |
| 01H 22H 36H 37H | GEQ Gain 6.3Hz | 7EH 6AH–00H 00H–01H 16H | -15.0–+15.0dB |
| 01H 22H 38H 39H | GEQ Gain 10kHz | 7EH 6AH–00H 00H–01H 16H | -15.0–+15.0dB |
| 01H 22H 3AH 3BH | GEQ Gain 16kHz | 7EH 6AH–00H 00H–01H 16H | -15.0–+15.0dB |

○ Audio AUX 1 Send

| Address | Parameter Name | Sys.Ex.Value | Meaning of Value |
|---------------------------|-----------------|--|--------------------------|
| 01H 23H 00H 01H 02H | Audio In 1 Send | 7EH 00H 00H, 7FH 79H 60H–00H 00H 00H–00H 00H 64H | -INFdB, -80.0–0.0–10.0dB |
| 01H 23H 03H 04H 05H | Audio In 2 Send | 7EH 00H 00H, 7FH 79H 60H–00H 00H 00H–00H 00H 64H | -INFdB, -80.0–0.0–10.0dB |
| 01H 23H 06H 07H 08H | Audio In 3 Send | 7EH 00H 00H, 7FH 79H 60H–00H 00H 00H–00H 00H 64H | -INFdB, -80.0–0.0–10.0dB |

| Address | Parameter Name | Sys.Ex.Value | Meaning of Value |
|---------------------------|-----------------------|--|----------------------------|
| 01H 23H 09H 0AH 0BH | Audio In 4 Send | 7EH 00H 00H, 7FH 79H 60H-00H 00H 00H-00H 00H 64H | -INFdB, -80.0-0.0-10.0dB |
| 01H 23H 0CH 0DH 0EH | Audio In 5 Send | 7EH 00H 00H, 7FH 79H 60H-00H 00H 00H-00H 00H 64H | -INFdB, -80.0-0.0-10.0dB |
| 01H 23H 0FH 10H 11H | Audio In 6 Send | 7EH 00H 00H, 7FH 79H 60H-00H 00H 00H-00H 00H 64H | -INFdB, -80.0-0.0-10.0dB |
| 01H 23H 12H 13H 14H | Audio In 7/8 Send | 7EH 00H 00H, 7FH 79H 60H-00H 00H 00H-00H 00H 64H | -INFdB, -80.0-0.0-10.0dB |
| 01H 23H 15H 16H 17H | Audio In 9/10 Send | 7EH 00H 00H, 7FH 79H 60H-00H 00H 00H-00H 00H 64H | -INFdB, -80.0-0.0-10.0dB |
| 01H 23H 18H 19H 1AH | USB In Send | 7EH 00H 00H, 7FH 79H 60H-00H 00H 00H-00H 00H 64H | -INFdB, -80.0-0.0-10.0dB |
| 01H 23H 1BH 1CH 1DH | Bluetooth In Send | 7EH 00H 00H, 7FH 79H 60H-00H 00H 00H-00H 00H 64H | -INFdB, -80.0-0.0-10.0dB |
| 01H 23H 1EH 1FH 20H | Audio Player Send | 7EH 00H 00H, 7FH 79H 60H-00H 00H 00H-00H 00H 64H | -INFdB, -80.0-0.0-10.0dB |
| 01H 23H 21H 22H 23H | HDMI In 1 Send | 7EH 00H 00H, 7FH 79H 60H-00H 00H 00H-00H 00H 64H | -INFdB, -80.0-0.0-10.0dB |
| 01H 23H 24H 25H 26H | HDMI In 2 Send | 7EH 00H 00H, 7FH 79H 60H-00H 00H 00H-00H 00H 64H | -INFdB, -80.0-0.0-10.0dB |
| 01H 23H 27H 28H 29H | HDMI In 3 Send | 7EH 00H 00H, 7FH 79H 60H-00H 00H 00H-00H 00H 64H | -INFdB, -80.0-0.0-10.0dB |
| 01H 23H 2AH 2BH 2CH | HDMI In 4 Send | 7EH 00H 00H, 7FH 79H 60H-00H 00H 00H-00H 00H 64H | -INFdB, -80.0-0.0-10.0dB |
| 01H 23H 2DH 2EH 2FH | HDMI In 5 Send | 7EH 00H 00H, 7FH 79H 60H-00H 00H 00H-00H 00H 64H | -INFdB, -80.0-0.0-10.0dB |
| 01H 23H 30H 31H 32H | HDMI In 6 Send | 7EH 00H 00H, 7FH 79H 60H-00H 00H 00H-00H 00H 64H | -INFdB, -80.0-0.0-10.0dB |
| 01H 23H 33H 34H 35H | SDI In 1 Send | 7EH 00H 00H, 7FH 79H 60H-00H 00H 00H-00H 00H 64H | -INFdB, -80.0-0.0-10.0dB |
| 01H 23H 36H 37H 38H | SDI In 2 Send | 7EH 00H 00H, 7FH 79H 60H-00H 00H 00H-00H 00H 64H | -INFdB, -80.0-0.0-10.0dB |
| 01H 23H 39H 3AH 3BH | SDI In 3 Send | 7EH 00H 00H, 7FH 79H 60H-00H 00H 00H-00H 00H 64H | -INFdB, -80.0-0.0-10.0dB |
| 01H 23H 3CH 3DH 3EH | SDI In 4 Send | 7EH 00H 00H, 7FH 79H 60H-00H 00H 00H-00H 00H 64H | -INFdB, -80.0-0.0-10.0dB |
| 01H 23H 3FH 40H 41H | SDI In 5 Send | 7EH 00H 00H, 7FH 79H 60H-00H 00H 00H-00H 00H 64H | -INFdB, -80.0-0.0-10.0dB |
| 01H 23H 42H 43H 44H | SDI In 6 Send | 7EH 00H 00H, 7FH 79H 60H-00H 00H 00H-00H 00H 64H | -INFdB, -80.0-0.0-10.0dB |
| 01H 23H 45H 46H 47H | Video Player Send | 7EH 00H 00H, 7FH 79H 60H-00H 00H 00H-00H 00H 64H | -INFdB, -80.0-0.0-10.0dB |
| 01H 23H 48H | Audio In 1 Send Point | 00H-02H | Dry, Pre Fader, Post Fader |
| 01H 23H 49H | Audio In 2 Send Point | 00H-02H | Dry, Pre Fader, Post Fader |
| 01H 23H 4AH | Audio In 3 Send Point | 00H-02H | Dry, Pre Fader, Post Fader |
| 01H 23H 4BH | Audio In 4 Send Point | 00H-02H | Dry, Pre Fader, Post Fader |
| 01H 23H 4CH | Audio In 5 Send Point | 00H-02H | Dry, Pre Fader, Post Fader |

| Address | Parameter Name | Sys.Ex.Value | Meaning of Value |
|-------------|--------------------------|--------------|----------------------------|
| 01H 23H 4DH | Audio In 6 Send Point | 00H–02H | Dry, Pre Fader, Post Fader |
| 01H 23H 4EH | Audio In 7/8 Send Point | 00H–02H | Dry, Pre Fader, Post Fader |
| 01H 23H 4FH | Audio In 9/10 Send Point | 00H–02H | Dry, Pre Fader, Post Fader |
| 01H 23H 50H | USB In Send Point | 00H–02H | Dry, Pre Fader, Post Fader |
| 01H 23H 51H | Bluetooth In Send Point | 00H–02H | Dry, Pre Fader, Post Fader |
| 01H 23H 52H | Audio Player Send Point | 00H–02H | Dry, Pre Fader, Post Fader |
| 01H 23H 53H | HDMI In 1 Send Point | 00H–02H | Dry, Pre Fader, Post Fader |
| 01H 23H 54H | HDMI In 2 Send Point | 00H–02H | Dry, Pre Fader, Post Fader |
| 01H 23H 55H | HDMI In 3 Send Point | 00H–02H | Dry, Pre Fader, Post Fader |
| 01H 23H 56H | HDMI In 4 Send Point | 00H–02H | Dry, Pre Fader, Post Fader |
| 01H 23H 57H | HDMI In 5 Send Point | 00H–02H | Dry, Pre Fader, Post Fader |
| 01H 23H 58H | HDMI In 6 Send Point | 00H–02H | Dry, Pre Fader, Post Fader |
| 01H 23H 59H | SDI In 1 Send Point | 00H–02H | Dry, Pre Fader, Post Fader |
| 01H 23H 5AH | SDI In 2 Send Point | 00H–02H | Dry, Pre Fader, Post Fader |
| 01H 23H 5BH | SDI In 3 Send Point | 00H–02H | Dry, Pre Fader, Post Fader |
| 01H 23H 5CH | SDI In 4 Send Point | 00H–02H | Dry, Pre Fader, Post Fader |
| 01H 23H 5DH | SDI In 5 Send Point | 00H–02H | Dry, Pre Fader, Post Fader |
| 01H 23H 5EH | SDI In 6 Send Point | 00H–02H | Dry, Pre Fader, Post Fader |
| 01H 23H 5FH | Video Player Send Point | 00H–02H | Dry, Pre Fader, Post Fader |

○ Audio AUX 2 Bus

| Address | Parameter Name | Sys.Ex.Value | Meaning of Value |
|---------------------------|----------------------------|--|--|
| 01H 24H 00H 01H 02H | Level | 7EH 00H 00H, 7FH 79H 60H–00H 00H 00H–00H 00H 64H | -INFdB, -80.0–0.0–10.0dB |
| 01H 24H 03H | Mute | 00H–01H | Off, On |
| 01H 24H 04H | Solo | 00H–01H | Off, On |
| 01H 24H 05H 06H | Delay | 00H 00H–27H 08H | 0.0–500.0msec |
| 01H 24H 07H | Compressor/Limiter Type | 00H–01H | Compressor, Limiter |
| 01H 24H 08H | Compressor/Limiter Sw | 00H–01H | Off, On |
| 01H 24H 09H | Limiter Threshold | 58H–00H | -40–0dB |
| 01H 24H 0AH | Compressor Threshold | 4EH–00H | -50–0dB |
| 01H 24H 0BH | Compressor Ratio | 00H–0DH | 1.00: 1, 1.12: 1, 1.25: 1, 1.40: 1, 1.60: 1, 1.80: 1, 2.00: 1, 2.50: 1, 3.20: 1, 4.00: 1, 5.60: 1, 8.00: 1, 16.0: 1, INF: 1 |
| 01H 24H 0CH | Compressor Attack | 00H–73H | 0.0–100msec |
| 01H 24H 0DH | Compressor Release | 00H–7FH | 30–5000msec |
| 01H 24H 0EH | Compressor Makeup Gain | 58H–00H–28H | -40–0–40dB |
| 01H 24H 0FH 10H 11H | Reverb Return Level | 7EH 00H 00H, 7FH 79H 60H–00H 00H 00H–00H 00H 64H | -INFdB, -80.0–0.0–10.0dB |
| 01H 24H 12H | Equalizer Sw | 00H–01H | Off, On |
| 01H 24H 13H | Equalizer Hi Gain | 04H–7CH | -12.0–12.0dB |
| 01H 24H 14H | Equalizer Hi Frequency | 24H–3EH | 1.00–20.0kHz |
| 01H 24H 15H | Equalizer Lo-Mid Gain | 04H–7CH | -12.0–12.0dB |
| 01H 24H 16H | Equalizer Lo-Mid Frequency | 02H–3EH | 20Hz–20.0kHz |
| 01H 24H 17H | Equalizer Lo-Mid Q | 00H–05H | 0.5, 1.0, 2.0, 4.0, 8.0, 16.0 |
| 01H 24H 18H | Equalizer Hi-Mid Gain | 04H–7CH | -12.0–12.0dB |
| 01H 24H 19H | Equalizer Hi-Mid Frequency | 02H–3EH | 20Hz–20.0kHz |
| 01H 24H 1AH | Equalizer Hi-Mid Q | 00H–05H | 0.5, 1.0, 2.0, 4.0, 8.0, 16.0 |
| 01H 24H 1BH | Equalizer Lo Gain | 04H–7CH | -12.0–12.0dB |
| 01H 24H 1CH | Equalizer Lo Frequency | 02H–2AH | 20Hz–2.00kHz |
| 01H 24H 1DH | GEQ Sw | 00H–01H | Off, On |
| 01H 24H 1EH 1FH | GEQ Gain 25Hz | 7EH 6AH–00H 00H–01H 16H | -15.0–+15.0dB |
| 01H 24H 20H 21H | GEQ Gain 40Hz | 7EH 6AH–00H 00H–01H 16H | -15.0–+15.0dB |
| 01H 24H 22H 23H | GEQ Gain 60Hz | 7EH 6AH–00H 00H–01H 16H | -15.0–+15.0dB |
| 01H 24H 24H 25H | GEQ Gain 100Hz | 7EH 6AH–00H 00H–01H 16H | -15.0–+15.0dB |

| Address | Parameter Name | Sys.Ex.Value | Meaning of Value |
|--------------------|-----------------|-------------------------|------------------|
| 01H 24H 26H 27H | GEQ Gain 160Hz | 7EH 6AH-00H 00H-01H 16H | -15.0--+15.0dB |
| 01H 24H 28H 29H | GEQ Gain 250Hz | 7EH 6AH-00H 00H-01H 16H | -15.0--+15.0dB |
| 01H 24H 2AH 2BH | GEQ Gain 400Hz | 7EH 6AH-00H 00H-01H 16H | -15.0--+15.0dB |
| 01H 24H 2CH 2DH | GEQ Gain 630Hz | 7EH 6AH-00H 00H-01H 16H | -15.0--+15.0dB |
| 01H 24H 2EH 2FH | GEQ Gain 1kHz | 7EH 6AH-00H 00H-01H 16H | -15.0--+15.0dB |
| 01H 24H 30H 31H | GEQ Gain 1.6kHz | 7EH 6AH-00H 00H-01H 16H | -15.0--+15.0dB |
| 01H 24H 32H 33H | GEQ Gain 2.5kHz | 7EH 6AH-00H 00H-01H 16H | -15.0--+15.0dB |
| 01H 24H 34H 35H | GEQ Gain 4kHz | 7EH 6AH-00H 00H-01H 16H | -15.0--+15.0dB |
| 01H 24H 36H 37H | GEQ Gain 6.3Hz | 7EH 6AH-00H 00H-01H 16H | -15.0--+15.0dB |
| 01H 24H 38H 39H | GEQ Gain 10kHz | 7EH 6AH-00H 00H-01H 16H | -15.0--+15.0dB |
| 01H 24H 3AH 3BH | GEQ Gain 16kHz | 7EH 6AH-00H 00H-01H 16H | -15.0--+15.0dB |

○ Audio AUX 2 Send

| Address | Parameter Name | Sys.Ex.Value | Meaning of Value |
|---------------------------|--------------------|--|--------------------------|
| 01H 25H 00H 01H 02H | Audio In 1 Send | 7EH 00H 00H, 7FH 79H 60H-00H 00H 00H-00H 00H 64H | -INFdB, -80.0-0.0-10.0dB |
| 01H 25H 03H 04H 05H | Audio In 2 Send | 7EH 00H 00H, 7FH 79H 60H-00H 00H 00H-00H 00H 64H | -INFdB, -80.0-0.0-10.0dB |
| 01H 25H 06H 07H 08H | Audio In 3 Send | 7EH 00H 00H, 7FH 79H 60H-00H 00H 00H-00H 00H 64H | -INFdB, -80.0-0.0-10.0dB |
| 01H 25H 09H 0AH 0BH | Audio In 4 Send | 7EH 00H 00H, 7FH 79H 60H-00H 00H 00H-00H 00H 64H | -INFdB, -80.0-0.0-10.0dB |
| 01H 25H 0CH 0DH 0EH | Audio In 5 Send | 7EH 00H 00H, 7FH 79H 60H-00H 00H 00H-00H 00H 64H | -INFdB, -80.0-0.0-10.0dB |
| 01H 25H 0FH 10H 11H | Audio In 6 Send | 7EH 00H 00H, 7FH 79H 60H-00H 00H 00H-00H 00H 64H | -INFdB, -80.0-0.0-10.0dB |
| 01H 25H 12H 13H 14H | Audio In 7/8 Send | 7EH 00H 00H, 7FH 79H 60H-00H 00H 00H-00H 00H 64H | -INFdB, -80.0-0.0-10.0dB |
| 01H 25H 15H 16H 17H | Audio In 9/10 Send | 7EH 00H 00H, 7FH 79H 60H-00H 00H 00H-00H 00H 64H | -INFdB, -80.0-0.0-10.0dB |
| 01H 25H 18H 19H 1AH | USB In Send | 7EH 00H 00H, 7FH 79H 60H-00H 00H 00H-00H 00H 64H | -INFdB, -80.0-0.0-10.0dB |
| 01H 25H 1BH 1CH 1DH | Bluetooth In Send | 7EH 00H 00H, 7FH 79H 60H-00H 00H 00H-00H 00H 64H | -INFdB, -80.0-0.0-10.0dB |
| 01H 25H 1EH 1FH 20H | Audio Player Send | 7EH 00H 00H, 7FH 79H 60H-00H 00H 00H-00H 00H 64H | -INFdB, -80.0-0.0-10.0dB |
| 01H 25H 21H 22H 23H | HDMI In 1 Send | 7EH 00H 00H, 7FH 79H 60H-00H 00H 00H-00H 00H 64H | -INFdB, -80.0-0.0-10.0dB |
| 01H 25H 24H 25H 26H | HDMI In 2 Send | 7EH 00H 00H, 7FH 79H 60H-00H 00H 00H-00H 00H 64H | -INFdB, -80.0-0.0-10.0dB |

| Address | Parameter Name | Sys.Ex.Value | Meaning of Value |
|----------------------------------|--------------------------|--|----------------------------|
| 01H 25H 27H 28H 29H | HDMI In 3 Send | 7EH 00H 00H, 7FH 79H 60H-00H 00H 00H-00H 00H 64H | -INFdB, -80.0-0.0-10.0dB |
| 01H 25H 2AH 2BH 2CH | HDMI In 4 Send | 7EH 00H 00H, 7FH 79H 60H-00H 00H 00H-00H 00H 64H | -INFdB, -80.0-0.0-10.0dB |
| 01H 25H 2DH 2EH 2FH | HDMI In 5 Send | 7EH 00H 00H, 7FH 79H 60H-00H 00H 00H-00H 00H 64H | -INFdB, -80.0-0.0-10.0dB |
| 01H 25H 30H 31H 32H | HDMI In 6 Send | 7EH 00H 00H, 7FH 79H 60H-00H 00H 00H-00H 00H 64H | -INFdB, -80.0-0.0-10.0dB |
| 01H 25H 33H 34H 35H | SDI In 1 Send | 7EH 00H 00H, 7FH 79H 60H-00H 00H 00H-00H 00H 64H | -INFdB, -80.0-0.0-10.0dB |
| 01H 25H 36H 37H 38H | SDI In 2 Send | 7EH 00H 00H, 7FH 79H 60H-00H 00H 00H-00H 00H 64H | -INFdB, -80.0-0.0-10.0dB |
| 01H 25H 39H 3AH 3BH 3CH | SDI In 3 Send | 7EH 00H 00H, 7FH 79H 60H-00H 00H 00H-00H 00H 64H | -INFdB, -80.0-0.0-10.0dB |
| 01H 25H 3DH 3EH | SDI In 4 Send | 7EH 00H 00H, 7FH 79H 60H-00H 00H 00H-00H 00H 64H | -INFdB, -80.0-0.0-10.0dB |
| 01H 25H 3FH 40H 41H | SDI In 5 Send | 7EH 00H 00H, 7FH 79H 60H-00H 00H 00H-00H 00H 64H | -INFdB, -80.0-0.0-10.0dB |
| 01H 25H 42H 43H 44H | SDI In 6 Send | 7EH 00H 00H, 7FH 79H 60H-00H 00H 00H-00H 00H 64H | -INFdB, -80.0-0.0-10.0dB |
| 01H 25H 45H 46H 47H | Video Player Send | 7EH 00H 00H, 7FH 79H 60H-00H 00H 00H-00H 00H 64H | -INFdB, -80.0-0.0-10.0dB |
| 01H 25H 48H | Audio In 1 Send Point | 00H-02H | Dry, Pre Fader, Post Fader |
| 01H 25H 49H | Audio In 2 Send Point | 00H-02H | Dry, Pre Fader, Post Fader |
| 01H 25H 4AH | Audio In 3 Send Point | 00H-02H | Dry, Pre Fader, Post Fader |
| 01H 25H 4BH | Audio In 4 Send Point | 00H-02H | Dry, Pre Fader, Post Fader |
| 01H 25H 4CH | Audio In 5 Send Point | 00H-02H | Dry, Pre Fader, Post Fader |
| 01H 25H 4DH | Audio In 6 Send Point | 00H-02H | Dry, Pre Fader, Post Fader |
| 01H 25H 4EH | Audio In 7/8 Send Point | 00H-02H | Dry, Pre Fader, Post Fader |
| 01H 25H 4FH | Audio In 9/10 Send Point | 00H-02H | Dry, Pre Fader, Post Fader |
| 01H 25H 50H | USB In Send Point | 00H-02H | Dry, Pre Fader, Post Fader |
| 01H 25H 51H | Bluetooth In Send Point | 00H-02H | Dry, Pre Fader, Post Fader |
| 01H 25H 52H | Audio Player Send Point | 00H-02H | Dry, Pre Fader, Post Fader |
| 01H 25H 53H | HDMI In 1 Send Point | 00H-02H | Dry, Pre Fader, Post Fader |
| 01H 25H 54H | HDMI In 2 Send Point | 00H-02H | Dry, Pre Fader, Post Fader |
| 01H 25H 55H | HDMI In 3 Send Point | 00H-02H | Dry, Pre Fader, Post Fader |
| 01H 25H 56H | HDMI In 4 Send Point | 00H-02H | Dry, Pre Fader, Post Fader |
| 01H 25H 57H | HDMI In 5 Send Point | 00H-02H | Dry, Pre Fader, Post Fader |
| 01H 25H 58H | HDMI In 6 Send Point | 00H-02H | Dry, Pre Fader, Post Fader |
| 01H 25H 59H | SDI In 1 Send Point | 00H-02H | Dry, Pre Fader, Post Fader |
| 01H 25H 5AH | SDI In 2 Send Point | 00H-02H | Dry, Pre Fader, Post Fader |
| 01H 25H 5BH | SDI In 3 Send Point | 00H-02H | Dry, Pre Fader, Post Fader |
| 01H 25H 5CH | SDI In 4 Send Point | 00H-02H | Dry, Pre Fader, Post Fader |
| 01H 25H 5DH | SDI In 5 Send Point | 00H-02H | Dry, Pre Fader, Post Fader |
| 01H 25H 5EH | SDI In 6 Send Point | 00H-02H | Dry, Pre Fader, Post Fader |
| 01H 25H 5FH | Video Player Send Point | 00H-02H | Dry, Pre Fader, Post Fader |

○ Audio USB Output

| Address | Parameter Name | Sys.Ex.Value | Meaning of Value |
|---------------------------|----------------|--|--------------------------|
| 01H 26H 00H 01H 02H | Level | 7EH 00H 00H, 7FH 79H 60H-00H 00H 00H-00H 00H 64H | -INFdB, -80.0-0.0-10.0dB |
| 01H 26H 03H | Mute | 00H-01H | Off, On |

| Address | Parameter Name | Sys.Ex.Value | Meaning of Value |
|--------------------|----------------------------|-----------------|-------------------------------|
| 01H 26H 04H 05H | Delay | 00H 00H–27H 08H | 0.0–500.0msec |
| 01H 26H 06H | Equalizer Sw | 00H–01H | Off, On |
| 01H 26H 07H | Equalizer Hi Gain | 04H–7CH | -12.0–12.0dB |
| 01H 26H 08H | Equalizer Hi Frequency | 24H–3EH | 1.00–20.0kHz |
| 01H 26H 09H | Equalizer Lo-Mid Gain | 04H–7CH | -12.0–12.0dB |
| 01H 26H 0AH | Equalizer Lo-Mid Frequency | 02H–3EH | 20Hz–20.0kHz |
| 01H 26H 0BH | Equalizer Lo-Mid Q | 00H–05H | 0.5, 1.0, 2.0, 4.0, 8.0, 16.0 |
| 01H 26H 0CH | Equalizer Hi-Mid Gain | 04H–7CH | -12.0–12.0dB |
| 01H 26H 0DH | Equalizer Hi-Mid Frequency | 02H–3EH | 20Hz–20.0kHz |
| 01H 26H 0EH | Equalizer Hi-Mid Q | 00H–05H | 0.5, 1.0, 2.0, 4.0, 8.0, 16.0 |
| 01H 26H 0FH | Equalizer Lo Gain | 04H–7CH | -12.0–12.0dB |
| 01H 26H 10H | Equalizer Lo Frequency | 02H–2AH | 20Hz–2.00kHz |

○ Audio Stream/Record

| Address | Parameter Name | Sys.Ex.Value | Meaning of Value |
|---------------------------|----------------------------|--|-------------------------------|
| 01H 27H 00H 01H 02H | Level | 7EH 00H 00H, 7FH 79H 60H–00H 00H 00H–00H 00H 64H | -INFdB, -80.0–0.0–10.0dB |
| 01H 27H 03H | Mute | 00H–01H | Off, On |
| 01H 27H 04H 05H | Delay | 00H 00H–27H 08H | 0.0–500.0msec |
| 01H 27H 06H | Equalizer Sw | 00H–01H | Off, On |
| 01H 27H 07H | Equalizer Hi Gain | 04H–7CH | -12.0–12.0dB |
| 01H 27H 08H | Equalizer Hi Frequency | 24H–3EH | 1.00–20.0kHz |
| 01H 27H 09H | Equalizer Lo-Mid Gain | 04H–7CH | -12.0–12.0dB |
| 01H 27H 0AH | Equalizer Lo-Mid Frequency | 02H–3EH | 20Hz–20.0kHz |
| 01H 27H 0BH | Equalizer Lo-Mid Q | 00H–05H | 0.5, 1.0, 2.0, 4.0, 8.0, 16.0 |
| 01H 27H 0CH | Equalizer Hi-Mid Gain | 04H–7CH | -12.0–12.0dB |
| 01H 27H 0DH | Equalizer Hi-Mid Frequency | 02H–3EH | 20Hz–20.0kHz |
| 01H 27H 0EH | Equalizer Hi-Mid Q | 00H–05H | 0.5, 1.0, 2.0, 4.0, 8.0, 16.0 |
| 01H 27H 0FH | Equalizer Lo Gain | 04H–7CH | -12.0–12.0dB |
| 01H 27H 10H | Equalizer Lo Frequency | 02H–2AH | 20Hz–2.00kHz |

○ Monitor

| Address | Parameter Name | Sys.Ex.Value | Meaning of Value |
|---------------------------|----------------|--|--------------------------|
| 01H 28H 00H 01H 02H | Level | 7EH 00H 00H, 7FH 79H 60H–00H 00H 00H–00H 00H 64H | -INFdB, -80.0–0.0–10.0dB |

○ Audio Embedded

| Address | Parameter Name | Sys.Ex.Value | Meaning of Value |
|-------------|---------------------------------|--------------|---|
| 01H 29H 00H | HDMI Out 1-3 Send (Channel 3/4) | 00H–15H | N/A, Audio In 1/2, Audio In 3/4, Audio In 5/6, Audio In 7/8, Audio In 9/10, Usb In, Bluetooth In, Audio Player, HDMI In 1–6, SDI In 1–6, Video Player |
| 01H 29H 01H | HDMI Out 1-3 Send (Channel 5/6) | 00H–15H | N/A, Audio In 1/2, Audio In 3/4, Audio In 5/6, Audio In 7/8, Audio In 9/10, Usb In, Bluetooth In, Audio Player, HDMI In 1–6, SDI In 1–6, Video Player |
| 01H 29H 02H | HDMI Out 1-3 Send (Channel 7/8) | 00H–15H | N/A, Audio In 1/2, Audio In 3/4, Audio In 5/6, Audio In 7/8, Audio In 9/10, Usb In, Bluetooth In, Audio Player, HDMI In 1–6, SDI In 1–6, Video Player |
| 01H 29H 03H | SDI Out 1-3 Send (Channel 3/4) | 00H–15H | N/A, Audio In 1/2, Audio In 3/4, Audio In 5/6, Audio In 7/8, Audio In 9/10, Usb In, Bluetooth In, Audio Player, HDMI In 1–6, SDI In 1–6, Video Player |
| 01H 29H 04H | SDI Out 1-3 Send (Channel 5/6) | 00H–15H | N/A, Audio In 1/2, Audio In 3/4, Audio In 5/6, Audio In 7/8, Audio In 9/10, Usb In, Bluetooth In, Audio Player, HDMI In 1–6, SDI In 1–6, Video Player |
| 01H 29H 05H | SDI Out 1-3 Send (Channel 7/8) | 00H–15H | N/A, Audio In 1/2, Audio In 3/4, Audio In 5/6, Audio In 7/8, Audio In 9/10, Usb In, Bluetooth In, Audio Player, HDMI In 1–6, SDI In 1–6, Video Player |
| 01H 29H 06H | Audio In 1 Embedded Position | 00H–03H | Off, Dry, Pre Fader, Post Fader |
| 01H 29H 07H | Audio In 2 Embedded Position | 00H–03H | Off, Dry, Pre Fader, Post Fader |
| 01H 29H 08H | Audio In 3 Embedded Position | 00H–03H | Off, Dry, Pre Fader, Post Fader |
| 01H 29H 09H | Audio In 4 Embedded Position | 00H–03H | Off, Dry, Pre Fader, Post Fader |
| 01H 29H 0AH | Audio In 5 Embedded Position | 00H–03H | Off, Dry, Pre Fader, Post Fader |
| 01H 29H 0BH | Audio In 6 Embedded Position | 00H–03H | Off, Dry, Pre Fader, Post Fader |

| Address | Parameter Name | Sys.Ex.Value | Meaning of Value |
|-------------|---------------------------------|--------------|---------------------------------|
| 01H 29H 0CH | Audio In 7/8 Embedded Position | 00H-03H | Off, Dry, Pre Fader, Post Fader |
| 01H 29H 0DH | Audio In 9/10 Embedded Position | 00H-03H | Off, Dry, Pre Fader, Post Fader |
| 01H 29H 0EH | USB In Embedded Position | 00H-03H | Off, Dry, Pre Fader, Post Fader |
| 01H 29H 0FH | Bluetooth In Embedded Position | 00H-03H | Off, Dry, Pre Fader, Post Fader |
| 01H 29H 10H | Audio Player Embedded Position | 00H-03H | Off, Dry, Pre Fader, Post Fader |
| 01H 29H 11H | HDMI In 1 Embedded Position | 00H-03H | Off, Dry, Pre Fader, Post Fader |
| 01H 29H 12H | HDMI In 2 Embedded Position | 00H-03H | Off, Dry, Pre Fader, Post Fader |
| 01H 29H 13H | HDMI In 3 Embedded Position | 00H-03H | Off, Dry, Pre Fader, Post Fader |
| 01H 29H 14H | HDMI In 4 Embedded Position | 00H-03H | Off, Dry, Pre Fader, Post Fader |
| 01H 29H 15H | HDMI In 5 Embedded Position | 00H-03H | Off, Dry, Pre Fader, Post Fader |
| 01H 29H 16H | HDMI In 6 Embedded Position | 00H-03H | Off, Dry, Pre Fader, Post Fader |
| 01H 29H 17H | SDI In 1 Embedded Position | 00H-03H | Off, Dry, Pre Fader, Post Fader |
| 01H 29H 18H | SDI In 2 Embedded Position | 00H-03H | Off, Dry, Pre Fader, Post Fader |
| 01H 29H 19H | SDI In 3 Embedded Position | 00H-03H | Off, Dry, Pre Fader, Post Fader |
| 01H 29H 1AH | SDI In 4 Embedded Position | 00H-03H | Off, Dry, Pre Fader, Post Fader |
| 01H 29H 1BH | SDI In 5 Embedded Position | 00H-03H | Off, Dry, Pre Fader, Post Fader |
| 01H 29H 1CH | SDI In 6 Embedded Position | 00H-03H | Off, Dry, Pre Fader, Post Fader |
| 01H 29H 1DH | Video Player Embedded Position | 00H-03H | Off, Dry, Pre Fader, Post Fader |

○ Audio Follow

| Address | Parameter Name | Sys.Ex.Value | Meaning of Value |
|-------------|-------------------|--------------|---|
| 01H 30H 00H | HDMI In 1 | 00H-01H | Off, On |
| 01H 30H 01H | HDMI In 2 | 00H-01H | Off, On |
| 01H 30H 02H | HDMI In 3 | 00H-01H | Off, On |
| 01H 30H 03H | HDMI In 4 | 00H-01H | Off, On |
| 01H 30H 04H | HDMI In 5 | 00H-01H | Off, On |
| 01H 30H 05H | HDMI In 6 | 00H-01H | Off, On |
| 01H 30H 06H | SDI In 1 | 00H-01H | Off, On |
| 01H 30H 07H | SDI In 2 | 00H-01H | Off, On |
| 01H 30H 08H | SDI In 3 | 00H-01H | Off, On |
| 01H 30H 09H | SDI In 4 | 00H-01H | Off, On |
| 01H 30H 0AH | SDI In 5 | 00H-01H | Off, On |
| 01H 30H 0BH | SDI In 6 | 00H-01H | Off, On |
| 01H 30H 0CH | Video Player | 00H-01H | Off, On |
| 01H 30H 0DH | Audio In 1 | 00H-25H | Off, HDMI In 1-6, SDI In 1-6, Still 1-16, Video Player, Input 1-8 |
| 01H 30H 0EH | Audio In 2 | 00H-25H | Off, HDMI In 1-6, SDI In 1-6, Still 1-16, Video Player, Input 1-8 |
| 01H 30H 0FH | Audio In 3 | 00H-25H | Off, HDMI In 1-6, SDI In 1-6, Still 1-16, Video Player, Input 1-8 |
| 01H 30H 10H | Audio In 4 | 00H-25H | Off, HDMI In 1-6, SDI In 1-6, Still 1-16, Video Player, Input 1-8 |
| 01H 30H 11H | Audio In 5 | 00H-25H | Off, HDMI In 1-6, SDI In 1-6, Still 1-16, Video Player, Input 1-8 |
| 01H 30H 12H | Audio In 6 | 00H-25H | Off, HDMI In 1-6, SDI In 1-6, Still 1-16, Video Player, Input 1-8 |
| 01H 30H 13H | Audio In 7/8 | 00H-25H | Off, HDMI In 1-6, SDI In 1-6, Still 1-16, Video Player, Input 1-8 |
| 01H 30H 14H | Audio In 9/10 | 00H-25H | Off, HDMI In 1-6, SDI In 1-6, Still 1-16, Video Player, Input 1-8 |
| 01H 30H 15H | USB In | 00H-25H | Off, HDMI In 1-6, SDI In 1-6, Still 1-16, Video Player, Input 1-8 |
| 01H 30H 16H | Bluetooth In | 00H-25H | Off, HDMI In 1-6, SDI In 1-6, Still 1-16, Video Player, Input 1-8 |
| 01H 30H 17H | Audio Player | 00H-25H | Off, HDMI In 1-6, SDI In 1-6, Still 1-16, Video Player, Input 1-8 |
| 01H 30H 18H | PinP&Key 1 Follow | 00H-01H | Off, On |
| 01H 30H 19H | PinP&Key 2 Follow | 00H-01H | Off, On |
| 01H 30H 1AH | PinP&Key 3 Follow | 00H-01H | Off, On |
| 01H 30H 1BH | PinP&Key 4 Follow | 00H-01H | Off, On |
| 01H 30H 1CH | DSK 1 Follow | 00H-01H | Off, On |
| 01H 30H 1DH | DSK 2 Follow | 00H-01H | Off, On |

○ Audio Auto Mixing

| Address | Parameter Name | Sys.Ex.Value | Meaning of Value |
|-------------|----------------|--------------|------------------|
| 01H 31H 00H | Auto Mixing Sw | 00H-01H | Off, On |
| 01H 31H 01H | Audio In 1 | 00H-01H | Disable, Enable |

| Address | Parameter Name | Sys.Ex.Value | Meaning of Value |
|-------------|----------------------|--------------|------------------|
| 01H 31H 02H | Audio In 2 | 00H-01H | Disable, Enable |
| 01H 31H 03H | Audio In 3 | 00H-01H | Disable, Enable |
| 01H 31H 04H | Audio In 4 | 00H-01H | Disable, Enable |
| 01H 31H 05H | Audio In 5 | 00H-01H | Disable, Enable |
| 01H 31H 06H | Audio In 6 | 00H-01H | Disable, Enable |
| 01H 31H 07H | Audio In 7/8 | 00H-01H | Disable, Enable |
| 01H 31H 08H | Audio In 9/10 | 00H-01H | Disable, Enable |
| 01H 31H 09H | USB In | 00H-01H | Disable, Enable |
| 01H 31H 0AH | Bluetooth In | 00H-01H | Disable, Enable |
| 01H 31H 0BH | Audio Player | 00H-01H | Disable, Enable |
| 01H 31H 0CH | HDMI In 1 | 00H-01H | Disable, Enable |
| 01H 31H 0DH | HDMI In 2 | 00H-01H | Disable, Enable |
| 01H 31H 0EH | HDMI In 3 | 00H-01H | Disable, Enable |
| 01H 31H 0FH | HDMI In 4 | 00H-01H | Disable, Enable |
| 01H 31H 10H | HDMI In 5 | 00H-01H | Disable, Enable |
| 01H 31H 11H | HDMI In 6 | 00H-01H | Disable, Enable |
| 01H 31H 12H | SDI In 1 | 00H-01H | Disable, Enable |
| 01H 31H 13H | SDI In 2 | 00H-01H | Disable, Enable |
| 01H 31H 14H | SDI In 3 | 00H-01H | Disable, Enable |
| 01H 31H 15H | SDI In 4 | 00H-01H | Disable, Enable |
| 01H 31H 16H | SDI In 5 | 00H-01H | Disable, Enable |
| 01H 31H 17H | SDI In 6 | 00H-01H | Disable, Enable |
| 01H 31H 18H | Video Player | 00H-01H | Disable, Enable |
| 01H 31H 19H | Audio In 1 Weight | 00H-64H | 0-100% |
| 01H 31H 1AH | Audio In 2 Weight | 00H-64H | 0-100% |
| 01H 31H 1BH | Audio In 3 Weight | 00H-64H | 0-100% |
| 01H 31H 1CH | Audio In 4 Weight | 00H-64H | 0-100% |
| 01H 31H 1DH | Audio In 5 Weight | 00H-64H | 0-100% |
| 01H 31H 1EH | Audio In 6 Weight | 00H-64H | 0-100% |
| 01H 31H 1FH | Audio In 7/8 Weight | 00H-64H | 0-100% |
| 01H 31H 20H | Audio In 9/10 Weight | 00H-64H | 0-100% |
| 01H 31H 21H | USB In Weight | 00H-64H | 0-100% |
| 01H 31H 22H | Bluetooth In Weight | 00H-64H | 0-100% |
| 01H 31H 23H | Audio Player Weight | 00H-64H | 0-100% |
| 01H 31H 24H | HDMI In 1 Weight | 00H-64H | 0-100% |
| 01H 31H 25H | HDMI In 2 Weight | 00H-64H | 0-100% |
| 01H 31H 26H | HDMI In 3 Weight | 00H-64H | 0-100% |
| 01H 31H 27H | HDMI In 4 Weight | 00H-64H | 0-100% |
| 01H 31H 28H | HDMI In 5 Weight | 00H-64H | 0-100% |
| 01H 31H 29H | HDMI In 6 Weight | 00H-64H | 0-100% |
| 01H 31H 2AH | SDI In 1 Weight | 00H-64H | 0-100% |
| 01H 31H 2BH | SDI In 2 Weight | 00H-64H | 0-100% |
| 01H 31H 2CH | SDI In 3 Weight | 00H-64H | 0-100% |
| 01H 31H 2DH | SDI In 4 Weight | 00H-64H | 0-100% |
| 01H 31H 2EH | SDI In 5 Weight | 00H-64H | 0-100% |
| 01H 31H 2FH | SDI In 6 Weight | 00H-64H | 0-100% |
| 01H 31H 30H | Video Player Weight | 00H-64H | 0-100% |

● System Parameter Area

○ Version

| Address | Parameter Name | Sys.Ex.Value | Meaning of Value |
|-------------|--------------------------|--------------|------------------|
| 02H 00H 00H | System Version Major | 00H-09H | 0-9 |
| 02H 00H 01H | System Version Minor (1) | 00H-09H | 0-9 |
| 02H 00H 02H | System Version Minor (2) | 00H-09H | 0-9 |
| 02H 00H 03H | System Version Build (1) | 00H-09H | 0-9 |
| 02H 00H 04H | System Version Build (2) | 00H-09H | 0-9 |
| 02H 00H 05H | System Version Build (3) | 00H-09H | 0-9 |

○ System

| Address | Parameter Name | Sys.Ex.Value | Meaning of Value |
|--------------------|-------------------------------------|-------------------------|---|
| 02H 01H 00H | HDCP | 00H-01H | Off, On |
| 02H 01H 01H | Frame Rate | 00H-07H | 60Hz, 59.94Hz, 50Hz, 30Hz, 29.97Hz, 25Hz, 24Hz, 23.98Hz |
| 02H 01H 02H | Frame Rate - USB Out | 00H-01H | Half Rate, Normal |
| 02H 01H 03H | Frame Rate - Stream/Record | 00H-01H | Half Rate, Normal |
| 02H 01H 04H | Output Format - System Format | 00H-01H | 1080p, 720p |
| 02H 01H 05H | Output Format - HDMI Out 1 | 00H-01H | 1080p, 1080i |
| 02H 01H 06H | Output Format - HDMI Out 2 | 00H-01H | 1080p, 1080i |
| 02H 01H 07H | Output Format - HDMI Out 3 | 00H-01H | 1080p, 1080i |
| 02H 01H 08H | Output Format - SDI Out 1 | 00H-01H | 1080p, 1080i |
| 02H 01H 09H | Output Format - SDI Out 2 | 00H-01H | 1080p, 1080i |
| 02H 01H 0AH | Output Format - SDI Out 3 | 00H-01H | 1080p, 1080i |
| 02H 01H 0BH | Output Format - USB Out | 00H-01H | 1080p, 720p |
| 02H 01H 0CH | Output Format - Stream/Record | 00H-01H | 1080p, 720p |
| 02H 01H 0DH | Reference Source | 00H-07H | Internal, External, SDI 1-6 |
| 02H 01H 0EH 0FH | Reference Clock Adjust | 71H 00H-00H 00H-0FH 00H | -1920-0-1920 |
| 02H 01H 10H 11H | Reference Line Adjust | 76H 50H-00H 00H-09H 30H | -1200-0-1200 |
| 02H 01H 12H | Bluetooth Sw | 00H-01H | Off, On |
| 02H 01H 13H | Panel Operation | 00H-01H | Dissolve, PGM/PST |
| 02H 01H 14H | Effects Transition Sync | 00H-01H | Off, On |
| 02H 01H 15H | Effects Spot | 00H-01H | Off, On |
| 02H 01H 16H | Audio Fader/Knob Mode | 00H-01H | Catch, Direct |
| 02H 01H 17H | Aux Linked PGM | 00H-02H | Off, Auto Link, Manual Link |
| 02H 01H 18H | Output Fade Assign Video Fade | 00H-03H | N/A, Black, White, AUX |
| 02H 01H 19H | Output Fade Assign Audio Fade | 00H-01H | Off, On |
| 02H 01H 1AH | Output Fade Time | 00H-28H | 0.0-4.0sec |
| 02H 01H 1BH 1CH | User 1 Assign | 00H 00H-01H 5AH | |
| 02H 01H 1DH 1EH | User 2 Assign | 00H 00H-01H 5AH | |
| 02H 01H 1FH 20H | User 3 Assign | 00H 00H-01H 5AH | |
| 02H 01H 21H 22H | User 4 Assign | 00H 00H-01H 5AH | |
| 02H 01H 23H 24H | Audio Effect 1 Assign | 00H 00H-01H 34H | |
| 02H 01H 25H 26H | Audio Effect 2 Assign | 00H 00H-01H 34H | |
| 02H 01H 27H 28H | Audio Effect 3 Assign | 00H 00H-01H 34H | |
| 02H 01H 29H 2AH | Audio Effect 4 Assign | 00H 00H-01H 34H | |
| 02H 01H 2BH | Monitor 1 Assign | 00H-07H | N/A, Multi-View, Input-View, Still-View, Program, Sub Program, Preview, Aux |
| 02H 01H 2CH | Monitor 2 Assign | 00H-07H | N/A, Multi-View, Input-View, Still-View, Program, Sub Program, Preview, Aux |
| 02H 01H 2DH | Monitor 3 Assign | 00H-07H | N/A, Multi-View, Input-View, Still-View, Program, Sub Program, Preview, Aux |
| 02H 01H 2EH | Monitor 4 Assign | 00H-07H | N/A, Multi-View, Input-View, Still-View, Program, Sub Program, Preview, Aux |
| 02H 01H 2FH | LED Dimmer | 01H-08H | 1-8 |
| 02H 01H 30H | LCD Dimmer | 01H-08H | 1-8 |
| 02H 01H 31H | LCD Menu | 00H-01H | Left, Right |
| 02H 01H 32H | Tally Frame - Multi-View | 00H-01H | Off, On |
| 02H 01H 33H | Tally Frame - Input-View | 00H-01H | Off, On |
| 02H 01H 34H | Tally Frame - Still-View | 00H-01H | Off, On |
| 02H 01H 35H | AUX/Source Indicator - Multi-View | 00H-01H | Off, On |
| 02H 01H 36H | AUX/Source Indicator - Input-View | 00H-01H | Off, On |
| 02H 01H 37H | AUX/Source Indicator - Still-View | 00H-01H | Off, On |
| 02H 01H 38H | External Rec Indicator - Multi-View | 00H-01H | Off, On |
| 02H 01H 39H | External Rec Indicator - Input-View | 00H-01H | Off, On |

| Address | Parameter Name | Sys.Ex.Value | Meaning of Value |
|-------------|--------------------------------|--------------|---|
| 02H 01H 3AH | Audio Level Meter - Multi-View | 00H-01H | Off, On |
| 02H 01H 3BH | Audio Level Meter - Input-View | 00H-01H | Off, On |
| 02H 01H 3CH | Preview Label - Multi-View | 00H-01H | Off, On |
| 02H 01H 3DH | Preview Label - Input-View | 00H-01H | Off, On |
| 02H 01H 3EH | Preview Label - Still-View | 00H-01H | Off, On |
| 02H 01H 3FH | Preview Label Size | 00H-01H | Small, Normal |
| 02H 01H 40H | Multi-View Layout - Left | 00H-04H | Program, Sub Program, Preview, AUX, Black |
| 02H 01H 41H | Multi-View Layout - Right | 00H-04H | Program, Sub Program, Preview, AUX, Black |
| 02H 01H 42H | Input-View Layout - Input 1 | 00H-28H | HDMI In 1-6, SDI In 1-6, Still 1-16, Video Player, Input 1-8, Stream/Record Status 1-2, Date&Time. N/A |
| 02H 01H 43H | Input-View Layout - Input 2 | 00H-28H | HDMI In 1-6, SDI In 1-6, Still 1-16, Video Player, Input 1-8, Stream/Record Status 1-2, Date&Time. N/A |
| 02H 01H 44H | Input-View Layout - Input 3 | 00H-28H | HDMI In 1-6, SDI In 1-6, Still 1-16, Video Player, Input 1-8, Stream/Record Status 1-2, Date&Time. N/A |
| 02H 01H 45H | Input-View Layout - Input 4 | 00H-28H | HDMI In 1-6, SDI In 1-6, Still 1-16, Video Player, Input 1-8, Stream/Record Status 1-2, Date&Time. N/A |
| 02H 01H 46H | Input-View Layout - Input 5 | 00H-28H | HDMI In 1-6, SDI In 1-6, Still 1-16, Video Player, Input 1-8, Stream/Record Status 1-2, Date&Time. N/A |
| 02H 01H 47H | Input-View Layout - Input 6 | 00H-28H | HDMI In 1-6, SDI In 1-6, Still 1-16, Video Player, Input 1-8, Stream/Record Status 1-2, Date&Time. N/A |
| 02H 01H 48H | Input-View Layout - Input 7 | 00H-28H | HDMI In 1-6, SDI In 1-6, Still 1-16, Video Player, Input 1-8, Stream/Record Status 1-2, Date&Time. N/A |
| 02H 01H 49H | Input-View Layout - Input 8 | 00H-28H | HDMI In 1-6, SDI In 1-6, Still 1-16, Video Player, Input 1-8, Stream/Record Status 1-2, Date&Time. N/A |
| 02H 01H 4AH | Input-View Layout - Input 9 | 00H-28H | HDMI In 1-6, SDI In 1-6, Still 1-16, Video Player, Input 1-8, Stream/Record Status 1-2, Date&Time. N/A |
| 02H 01H 4BH | Input-View Layout - Input 10 | 00H-28H | HDMI In 1-6, SDI In 1-6, Still 1-16, Video Player, Input 1-8, Stream/Record Status 1-2, Date&Time. N/A |
| 02H 01H 4CH | Input-View Layout - Input 11 | 00H-28H | HDMI In 1-6, SDI In 1-6, Still 1-16, Video Player, Input 1-8, Stream/Record Status 1-2, Date&Time. N/A |
| 02H 01H 4DH | Input-View Layout - Input 12 | 00H-28H | HDMI In 1-6, SDI In 1-6, Still 1-16, Video Player, Input 1-8, Stream/Record Status 1-2, Date&Time. N/A |
| 02H 01H 4EH | Input-View Layout - Input 13 | 00H-28H | HDMI In 1-6, SDI In 1-6, Still 1-16, Video Player, Input 1-8, Stream/Record Status 1-2, Date&Time. N/A |
| 02H 01H 4FH | Input-View Layout - Input 14 | 00H-28H | HDMI In 1-6, SDI In 1-6, Still 1-16, Video Player, Input 1-8, Stream/Record Status 1-2, Date&Time. N/A |
| 02H 01H 50H | Input-View Layout - Input 15 | 00H-28H | HDMI In 1-6, SDI In 1-6, Still 1-16, Video Player, Input 1-8, Stream/Record Status 1-2, Date&Time. N/A |
| 02H 01H 51H | Input-View Layout - Input 16 | 00H-28H | HDMI In 1-6, SDI In 1-6, Still 1-16, Video Player, Input 1-8, Stream/Record Status 1-2, Date&Time. N/A |
| 02H 01H 52H | Auto Input Detect | 00H-01H | Off, On |
| 02H 01H 53H | Auto Fan Control | 00H-01H | Off, On |
| 02H 01H 54H | Test Pattern | 00H-0CH | Off, Color Bars 75%, Color Bars 100%, Ramp, Step, Hatch, Diamond, Circle, Color Bars 75%-SP, Color Bars 100%-SP, Ramp-SP, Step-SP, Hatch-SP |
| 02H 01H 55H | Test Pattern Motion | 00H-02H | Disable, Slow, Fast |
| 02H 01H 56H | Test Tone Level | 00H-03H | Off, -20dB, -10dB, 0dB |
| 02H 01H 57H | Test Tone Frequency L | 00H-02H | 500Hz, 1kHz, 2kHz |
| 02H 01H 58H | Test Tone Frequency R | 00H-02H | 500Hz, 1kHz, 2kHz |
| 02H 01H 59H | VIDEO SWITCHER Button Mode | 00H-03H | Input Select, Aux, Scene Memory, Macro |
| 02H 01H 5AH | USB Output Format | 00H-01H | YUY2 & MJPEG, YUY2 |
| 02H 01H 5BH | Language | 00H-02H | English, 日本語, 简体中文 |

○ Audio Level Meter

| Address | Parameter Name | Sys.Ex.Value | Meaning of Value |
|-------------|-------------------------------------|--------------|-----------------------------------|
| 02H 02H 00H | Level Meter Position - Audio In 1 | 00H-01H | Pre Fader (PFL), Post Fader (AFL) |
| 02H 02H 01H | Level Meter Position - Audio In 2 | 00H-01H | Pre Fader (PFL), Post Fader (AFL) |
| 02H 02H 02H | Level Meter Position - Audio In 3 | 00H-01H | Pre Fader (PFL), Post Fader (AFL) |
| 02H 02H 03H | Level Meter Position - Audio In 4 | 00H-01H | Pre Fader (PFL), Post Fader (AFL) |
| 02H 02H 04H | Level Meter Position - Audio In 5 | 00H-01H | Pre Fader (PFL), Post Fader (AFL) |
| 02H 02H 05H | Level Meter Position - Audio In 6 | 00H-01H | Pre Fader (PFL), Post Fader (AFL) |
| 02H 02H 06H | Level Meter Position - Audio In 7/8 | 00H-01H | Pre Fader (PFL), Post Fader (AFL) |

| Address | Parameter Name | Sys.Ex.Value | Meaning of Value |
|-------------|--------------------------------------|--------------|--|
| 02H 02H 07H | Level Meter Position - Audio In 9/10 | 00H-01H | Pre Fader (PFL), Post Fader (AFL) |
| 02H 02H 08H | Level Meter Position - USB In | 00H-01H | Pre Fader (PFL), Post Fader (AFL) |
| 02H 02H 09H | Level Meter Position - Bluetooth In | 00H-01H | Pre Fader (PFL), Post Fader (AFL) |
| 02H 02H 0AH | Level Meter Position - Audio Player | 00H-01H | Pre Fader (PFL), Post Fader (AFL) |
| 02H 02H 0BH | Level Meter Position - HDMI In 1 | 00H-01H | Pre Fader (PFL), Post Fader (AFL) |
| 02H 02H 0CH | Level Meter Position - HDMI In 2 | 00H-01H | Pre Fader (PFL), Post Fader (AFL) |
| 02H 02H 0DH | Level Meter Position - HDMI In 3 | 00H-01H | Pre Fader (PFL), Post Fader (AFL) |
| 02H 02H 0EH | Level Meter Position - HDMI In 4 | 00H-01H | Pre Fader (PFL), Post Fader (AFL) |
| 02H 02H 0FH | Level Meter Position - HDMI In 5 | 00H-01H | Pre Fader (PFL), Post Fader (AFL) |
| 02H 02H 10H | Level Meter Position - HDMI In 6 | 00H-01H | Pre Fader (PFL), Post Fader (AFL) |
| 02H 02H 11H | Level Meter Position - SDI In 1 | 00H-01H | Pre Fader (PFL), Post Fader (AFL) |
| 02H 02H 12H | Level Meter Position - SDI In 2 | 00H-01H | Pre Fader (PFL), Post Fader (AFL) |
| 02H 02H 13H | Level Meter Position - SDI In 3 | 00H-01H | Pre Fader (PFL), Post Fader (AFL) |
| 02H 02H 14H | Level Meter Position - SDI In 4 | 00H-01H | Pre Fader (PFL), Post Fader (AFL) |
| 02H 02H 15H | Level Meter Position - SDI In 5 | 00H-01H | Pre Fader (PFL), Post Fader (AFL) |
| 02H 02H 16H | Level Meter Position - SDI In 6 | 00H-01H | Pre Fader (PFL), Post Fader (AFL) |
| 02H 02H 17H | Level Meter Position - Video Player | 00H-01H | Pre Fader (PFL), Post Fader (AFL) |
| 02H 02H 18H | Level Meter Position - Main Bus | 00H-01H | Pre Fader (PFL), Post Fader (AFL) |
| 02H 02H 19H | Level Meter Position - AUX 1 Bus | 00H-01H | Pre Fader (PFL), Post Fader (AFL) |
| 02H 02H 1AH | Level Meter Position - AUX 2 Bus | 00H-01H | Pre Fader (PFL), Post Fader (AFL) |
| 02H 02H 1BH | Level Meter Position - USB Out | 00H-01H | Pre Fader (PFL), Post Fader (AFL) |
| 02H 02H 1CH | Level Meter Position - Stream/Record | 00H-01H | Pre Fader (PFL), Post Fader (AFL) |
| 02H 02H 1DH | Audio Level Custom 1 Assign | 00H-1CH | Audio In 1-6, Audio In 7/8, Audio In 9/10, USB In, Bluetooth In, Audio Player, HDMI In 1-6, SDI In 1-6, Video Player, Main Bus, AUX 1 Bus, AUX 2 Bus, USB Out, Stream/Record |
| 02H 02H 1EH | Audio Level Custom 2 Assign | 00H-1CH | Audio In 1-6, Audio In 7/8, Audio In 9/10, USB In, Bluetooth In, Audio Player, HDMI In 1-6, SDI In 1-6, Video Player, Main Bus, AUX 1 Bus, AUX 2 Bus, USB Out, Stream/Record |
| 02H 02H 1FH | Audio Level Custom 3 Assign | 00H-1CH | Audio In 1-6, Audio In 7/8, Audio In 9/10, USB In, Bluetooth In, Audio Player, HDMI In 1-6, SDI In 1-6, Video Player, Main Bus, AUX 1 Bus, AUX 2 Bus, USB Out, Stream/Record |
| 02H 02H 20H | Audio Level Custom 4 Assign | 00H-1CH | Audio In 1-6, Audio In 7/8, Audio In 9/10, USB In, Bluetooth In, Audio Player, HDMI In 1-6, SDI In 1-6, Video Player, Main Bus, AUX 1 Bus, AUX 2 Bus, USB Out, Stream/Record |
| 02H 02H 21H | Audio Level Custom 5 Assign | 00H-1CH | Audio In 1-6, Audio In 7/8, Audio In 9/10, USB In, Bluetooth In, Audio Player, HDMI In 1-6, SDI In 1-6, Video Player, Main Bus, AUX 1 Bus, AUX 2 Bus, USB Out, Stream/Record |
| 02H 02H 22H | Audio Level Custom 6 Assign | 00H-1CH | Audio In 1-6, Audio In 7/8, Audio In 9/10, USB In, Bluetooth In, Audio Player, HDMI In 1-6, SDI In 1-6, Video Player, Main Bus, AUX 1 Bus, AUX 2 Bus, USB Out, Stream/Record |
| 02H 02H 23H | Audio Level Custom 7 Assign | 00H-1CH | Audio In 1-6, Audio In 7/8, Audio In 9/10, USB In, Bluetooth In, Audio Player, HDMI In 1-6, SDI In 1-6, Video Player, Main Bus, AUX 1 Bus, AUX 2 Bus, USB Out, Stream/Record |
| 02H 02H 24H | Audio Level Custom 8 Assign | 00H-1CH | Audio In 1-6, Audio In 7/8, Audio In 9/10, USB In, Bluetooth In, Audio Player, HDMI In 1-6, SDI In 1-6, Video Player, Main Bus, AUX 1 Bus, AUX 2 Bus, USB Out, Stream/Record |

○ Panel Lock

| Address | Parameter Name | Sys.Ex.Value | Meaning of Value |
|-------------|-------------------------|--------------|------------------|
| 02H 03H 00H | Touch Panel | 00H-01H | Off, On |
| 02H 03H 01H | VIDEO SWITCHER Button 1 | 00H-01H | Off, On |
| 02H 03H 02H | VIDEO SWITCHER Button 2 | 00H-01H | Off, On |
| 02H 03H 03H | VIDEO SWITCHER Button 3 | 00H-01H | Off, On |
| 02H 03H 04H | VIDEO SWITCHER Button 4 | 00H-01H | Off, On |
| 02H 03H 05H | VIDEO SWITCHER Button 5 | 00H-01H | Off, On |
| 02H 03H 06H | VIDEO SWITCHER Button 6 | 00H-01H | Off, On |
| 02H 03H 07H | VIDEO SWITCHER Button 7 | 00H-01H | Off, On |
| 02H 03H 08H | VIDEO SWITCHER Button 8 | 00H-01H | Off, On |
| 02H 03H 09H | CUT Button | 00H-01H | Off, On |

| Address | Parameter Name | Sys.Ex.Value | Meaning of Value |
|-------------|------------------------------|--------------|------------------|
| 02H 03H 0AH | AUTO Button | 00H-01H | Off, On |
| 02H 03H 0BH | MODE - SETUP Button | 00H-01H | Off, On |
| 02H 03H 0CH | MODE - INPUT SELECT Button | 00H-01H | Off, On |
| 02H 03H 0DH | MODE - AUX Button | 00H-01H | Off, On |
| 02H 03H 0EH | MODE - SCENE MEMORY Button | 00H-01H | Off, On |
| 02H 03H 0FH | MODE - MACRO Button | 00H-01H | Off, On |
| 02H 03H 10H | TRANSITION - SETUP Button | 00H-01H | Off, On |
| 02H 03H 11H | TRANSITION - MIX Button | 00H-01H | Off, On |
| 02H 03H 12H | TRANSITION - WIPE Button | 00H-01H | Off, On |
| 02H 03H 13H | TRANSITION - SPLIT 1 Button | 00H-01H | Off, On |
| 02H 03H 14H | TRANSITION - SPLIT 2 Button | 00H-01H | Off, On |
| 02H 03H 15H | PinP&KEY 1 - SETUP Button | 00H-01H | Off, On |
| 02H 03H 16H | PinP&KEY 1 - PVW Button | 00H-01H | Off, On |
| 02H 03H 17H | PinP&KEY 1 - PGM Button | 00H-01H | Off, On |
| 02H 03H 18H | PinP&KEY 2 - SETUP Button | 00H-01H | Off, On |
| 02H 03H 19H | PinP&KEY 2 - PVW Button | 00H-01H | Off, On |
| 02H 03H 1AH | PinP&KEY 2 - PGM Button | 00H-01H | Off, On |
| 02H 03H 1BH | PinP&KEY 3 - SETUP Button | 00H-01H | Off, On |
| 02H 03H 1CH | PinP&KEY 3 - PVW Button | 00H-01H | Off, On |
| 02H 03H 1DH | PinP&KEY 3 - PGM Button | 00H-01H | Off, On |
| 02H 03H 1EH | PinP&KEY 4 - SETUP Button | 00H-01H | Off, On |
| 02H 03H 1FH | PinP&KEY 4 - PVW Button | 00H-01H | Off, On |
| 02H 03H 20H | PinP&KEY 4 - PGM Button | 00H-01H | Off, On |
| 02H 03H 21H | DSK 1 - SETUP Button | 00H-01H | Off, On |
| 02H 03H 22H | DSK 1 - PVW Button | 00H-01H | Off, On |
| 02H 03H 23H | DSK 1 - PGM Button | 00H-01H | Off, On |
| 02H 03H 24H | DSK 2 - SETUP Button | 00H-01H | Off, On |
| 02H 03H 25H | DSK 2 - PVW Button | 00H-01H | Off, On |
| 02H 03H 26H | DSK 2 - PGM Button | 00H-01H | Off, On |
| 02H 03H 27H | USER - SETUP Button | 00H-01H | Off, On |
| 02H 03H 28H | USER - USER 1 Button | 00H-01H | Off, On |
| 02H 03H 29H | USER - USER 2 Button | 00H-01H | Off, On |
| 02H 03H 2AH | USER - USER 3 Button | 00H-01H | Off, On |
| 02H 03H 2BH | USER - USER 4 Button | 00H-01H | Off, On |
| 02H 03H 2CH | MONITOR - SETUP Button | 00H-01H | Off, On |
| 02H 03H 2DH | MONITOR - MONITOR 1 Button | 00H-01H | Off, On |
| 02H 03H 2EH | MONITOR - MONITOR 2 Button | 00H-01H | Off, On |
| 02H 03H 2FH | MONITOR - MONITOR 3 Button | 00H-01H | Off, On |
| 02H 03H 30H | MONITOR - MONITOR 4 Button | 00H-01H | Off, On |
| 02H 03H 31H | CAPTURE IMAGE Button | 00H-01H | Off, On |
| 02H 03H 32H | AUDIO LEVEL Button | 00H-01H | Off, On |
| 02H 03H 33H | OUTPUT FADE Button | 00H-01H | Off, On |
| 02H 03H 34H | AUDIO MIXER 1 - GAIN knob | 00H-01H | Off, On |
| 02H 03H 35H | AUDIO MIXER 1 - SETUP Button | 00H-01H | Off, On |
| 02H 03H 36H | AUDIO MIXER 1 - SOLO Button | 00H-01H | Off, On |
| 02H 03H 37H | AUDIO MIXER 1 - MUTE Button | 00H-01H | Off, On |
| 02H 03H 38H | AUDIO MIXER 1 - Level Fader | 00H-01H | Off, On |
| 02H 03H 39H | AUDIO MIXER 2 - GAIN knob | 00H-01H | Off, On |
| 02H 03H 3AH | AUDIO MIXER 2 - SETUP Button | 00H-01H | Off, On |
| 02H 03H 3BH | AUDIO MIXER 2 - SOLO Button | 00H-01H | Off, On |
| 02H 03H 3CH | AUDIO MIXER 2 - MUTE Button | 00H-01H | Off, On |
| 02H 03H 3DH | AUDIO MIXER 2 - Level Fader | 00H-01H | Off, On |
| 02H 03H 3EH | AUDIO MIXER 3 - GAIN knob | 00H-01H | Off, On |
| 02H 03H 3FH | AUDIO MIXER 3 - SETUP Button | 00H-01H | Off, On |
| 02H 03H 40H | AUDIO MIXER 3 - SOLO Button | 00H-01H | Off, On |
| 02H 03H 41H | AUDIO MIXER 3 - MUTE Button | 00H-01H | Off, On |
| 02H 03H 42H | AUDIO MIXER 3 - Level Fader | 00H-01H | Off, On |
| 02H 03H 43H | AUDIO MIXER 4 - GAIN knob | 00H-01H | Off, On |
| 02H 03H 44H | AUDIO MIXER 4 - SETUP Button | 00H-01H | Off, On |
| 02H 03H 45H | AUDIO MIXER 4 - SOLO Button | 00H-01H | Off, On |
| 02H 03H 46H | AUDIO MIXER 4 - MUTE Button | 00H-01H | Off, On |
| 02H 03H 47H | AUDIO MIXER 4 - Level Fader | 00H-01H | Off, On |

| Address | Parameter Name | Sys.Ex.Value | Meaning of Value |
|-------------|--------------------------------------|--------------|------------------|
| 02H 03H 48H | AUDIO MIXER 5 - GAIN knob | 00H-01H | Off, On |
| 02H 03H 49H | AUDIO MIXER 5 - SETUP Button | 00H-01H | Off, On |
| 02H 03H 4AH | AUDIO MIXER 5 - SOLO Button | 00H-01H | Off, On |
| 02H 03H 4BH | AUDIO MIXER 5 - MUTE Button | 00H-01H | Off, On |
| 02H 03H 4CH | AUDIO MIXER 5 - Level Fader | 00H-01H | Off, On |
| 02H 03H 4DH | AUDIO MIXER 6 - GAIN knob | 00H-01H | Off, On |
| 02H 03H 4EH | AUDIO MIXER 6 - SETUP Button | 00H-01H | Off, On |
| 02H 03H 4FH | AUDIO MIXER 6 - SOLO Button | 00H-01H | Off, On |
| 02H 03H 50H | AUDIO MIXER 6 - MUTE Button | 00H-01H | Off, On |
| 02H 03H 51H | AUDIO MIXER 6 - Level Fader | 00H-01H | Off, On |
| 02H 03H 52H | AUDIO MIXER 7 - GAIN knob | 00H-01H | Off, On |
| 02H 03H 53H | AUDIO MIXER 7 - SETUP Button | 00H-01H | Off, On |
| 02H 03H 54H | AUDIO MIXER 7 - SOLO Button | 00H-01H | Off, On |
| 02H 03H 55H | AUDIO MIXER 7 - MUTE Button | 00H-01H | Off, On |
| 02H 03H 56H | AUDIO MIXER 7 - Level Fader | 00H-01H | Off, On |
| 02H 03H 57H | AUDIO MIXER 8 - GAIN knob | 00H-01H | Off, On |
| 02H 03H 58H | AUDIO MIXER 8 - SETUP Button | 00H-01H | Off, On |
| 02H 03H 59H | AUDIO MIXER 8 - SOLO Button | 00H-01H | Off, On |
| 02H 03H 5AH | AUDIO MIXER 8 - MUTE Button | 00H-01H | Off, On |
| 02H 03H 5BH | AUDIO MIXER 8 - Level Fader | 00H-01H | Off, On |
| 02H 03H 5CH | MAIN - SETUP Button | 00H-01H | Off, On |
| 02H 03H 5DH | MAIN - SOLO Button | 00H-01H | Off, On |
| 02H 03H 5EH | MAIN - MUTE Button | 00H-01H | Off, On |
| 02H 03H 5FH | MAIN - Level Fader | 00H-01H | Off, On |
| 02H 03H 60H | AUX 1 Knob | 00H-01H | Off, On |
| 02H 03H 61H | AUX 2 Knob | 00H-01H | Off, On |
| 02H 03H 62H | USB OUT Knob | 00H-01H | Off, On |
| 02H 03H 63H | STREAM/RECORD Knob | 00H-01H | Off, On |
| 02H 03H 64H | AUDIO EFFECT - SETUP Button | 00H-01H | Off, On |
| 02H 03H 65H | AUDIO EFFECT - AUDIO EFFECT 1 Button | 00H-01H | Off, On |
| 02H 03H 66H | AUDIO EFFECT - AUDIO EFFECT 2 Button | 00H-01H | Off, On |
| 02H 03H 67H | AUDIO EFFECT - AUDIO EFFECT 3 Button | 00H-01H | Off, On |
| 02H 03H 68H | AUDIO EFFECT - AUDIO EFFECT 4 Button | 00H-01H | Off, On |
| 02H 03H 69H | AUDIO PLAYER - SETUP Button | 00H-01H | Off, On |
| 02H 03H 6AH | AUDIO PLAYER - AUDIO PLAYER 1 Pad | 00H-01H | Off, On |
| 02H 03H 6BH | AUDIO PLAYER - AUDIO PLAYER 2 Pad | 00H-01H | Off, On |
| 02H 03H 6CH | AUDIO PLAYER - AUDIO PLAYER 3 Pad | 00H-01H | Off, On |
| 02H 03H 6DH | AUDIO PLAYER - AUDIO PLAYER 4 Pad | 00H-01H | Off, On |
| 02H 03H 6EH | AUDIO PLAYER - AUDIO PLAYER 5 Pad | 00H-01H | Off, On |
| 02H 03H 6FH | AUDIO PLAYER - AUDIO PLAYER 6 Pad | 00H-01H | Off, On |
| 02H 03H 70H | AUDIO PLAYER - AUDIO PLAYER 7 Pad | 00H-01H | Off, On |
| 02H 03H 71H | AUDIO PLAYER - AUDIO PLAYER 8 Pad | 00H-01H | Off, On |
| 02H 03H 72H | AUDIO PLAYER - Level Knob | 00H-01H | Off, On |

○ Scene Memory

| Address | Parameter Name | Sys.Ex.Value | Meaning of Value |
|-------------|---------------------|--------------|--------------------------|
| 02H 04H 00H | Start Up | 7FH-00H-1FH | Last Memory, Memory 1-32 |
| 02H 04H 01H | Start Up - Priority | 00H-01H | Memory, Panel |
| 02H 04H 02H | Memory Protect | 00H-01H | Off, On |
| 02H 04H 03H | Fade Time | 00H-28H | 0.0-4.0sec |
| 02H 04H 04H | Fade - Mix/Wipe | 00H-01H | Off, On |

| Address | Parameter Name | Sys.Ex.Value | Meaning of Value |
|-------------|---|--------------|------------------|
| 02H 04H 05H | Fade - PinP&Key 1 | 00H-01H | Off, On |
| 02H 04H 06H | Fade - PinP&Key 2 | 00H-01H | Off, On |
| 02H 04H 07H | Fade - PinP&Key 3 | 00H-01H | Off, On |
| 02H 04H 08H | Fade - PinP&Key 4 | 00H-01H | Off, On |
| 02H 04H 09H | Fade - DSK 1 | 00H-01H | Off, On |
| 02H 04H 0AH | Fade - DSK 2 | 00H-01H | Off, On |
| 02H 04H 0BH | Load Parameters - Video Assign | 00H-01H | Off, On |
| 02H 04H 0CH | Load Parameters - Video Input | 00H-01H | Off, On |
| 02H 04H 0DH | Load Parameters - Video Output | 00H-01H | Off, On |
| 02H 04H 0EH | Load Parameters -Transition - Transition Type | 00H-01H | Off, On |
| 02H 04H 0FH | Load Parameters -Transition - Mix | 00H-01H | Off, On |
| 02H 04H 10H | Load Parameters -Transition - Wipe | 00H-01H | Off, On |
| 02H 04H 11H | Load Parameters -Transition - Split 1 | 00H-01H | Off, On |
| 02H 04H 12H | Load Parameters -Transition - Split 2 | 00H-01H | Off, On |
| 02H 04H 13H | Load Parameters - PinP&Key - PinP&Key 1 | 00H-01H | Off, On |
| 02H 04H 14H | Load Parameters - PinP&Key - PinP&Key 2 | 00H-01H | Off, On |
| 02H 04H 15H | Load Parameters - PinP&Key - PinP&Key 3 | 00H-01H | Off, On |
| 02H 04H 16H | Load Parameters - PinP&Key - PinP&Key 4 | 00H-01H | Off, On |
| 02H 04H 17H | Load Parameters - DSK - DSK 1 | 00H-01H | Off, On |
| 02H 04H 18H | Load Parameters - DSK - DSK 2 | 00H-01H | Off, On |
| 02H 04H 19H | Load Parameters - Video Switcher Button | 00H-01H | Off, On |
| 02H 04H 1AH | Load Parameters - Audio Fader Assign | 00H-01H | Off, On |
| 02H 04H 1BH | Load Parameters - Audio Input | 00H-01H | Off, On |
| 02H 04H 1CH | Load Parameters - Audio Output | 00H-01H | Off, On |
| 02H 04H 1DH | Load Parameters - Audio Follow | 00H-01H | Off, On |
| 02H 04H 1EH | Load Parameters - Audio Auto Mixing | 00H-01H | Off, On |
| 02H 04H 1FH | Button Assign - VIDEO SWITCHER Button 1 | 00H-1FH | Memory 1-32 |
| 02H 04H 20H | Button Assign - VIDEO SWITCHER Button 2 | 00H-1FH | Memory 1-32 |
| 02H 04H 21H | Button Assign - VIDEO SWITCHER Button 3 | 00H-1FH | Memory 1-32 |
| 02H 04H 22H | Button Assign - VIDEO SWITCHER Button 4 | 00H-1FH | Memory 1-32 |
| 02H 04H 23H | Button Assign - VIDEO SWITCHER Button 5 | 00H-1FH | Memory 1-32 |
| 02H 04H 24H | Button Assign - VIDEO SWITCHER Button 6 | 00H-1FH | Memory 1-32 |
| 02H 04H 25H | Button Assign - VIDEO SWITCHER Button 7 | 00H-1FH | Memory 1-32 |
| 02H 04H 26H | Button Assign - VIDEO SWITCHER Button 8 | 00H-1FH | Memory 1-32 |

○ Scene Memory Exist

| Address | Parameter Name | Sys.Ex.Value | Meaning of Value |
|-------------|----------------|--------------|------------------------------|
| 02H 05H 00H | Memory 1 Exist | 00H-01H | Not Exist, Exist (Read Only) |
| 02H 05H 01H | Memory 2 Exist | 00H-01H | Not Exist, Exist (Read Only) |
| 02H 05H 02H | Memory 3 Exist | 00H-01H | Not Exist, Exist (Read Only) |
| 02H 05H 03H | Memory 4 Exist | 00H-01H | Not Exist, Exist (Read Only) |
| 02H 05H 04H | Memory 5 Exist | 00H-01H | Not Exist, Exist (Read Only) |
| 02H 05H 05H | Memory 6 Exist | 00H-01H | Not Exist, Exist (Read Only) |

| Address | Parameter Name | Sys.Ex.Value | Meaning of Value |
|-------------|-----------------|--------------|------------------------------|
| 02H 05H 06H | Memory 7 Exist | 00H-01H | Not Exist, Exist (Read Only) |
| 02H 05H 07H | Memory 8 Exist | 00H-01H | Not Exist, Exist (Read Only) |
| 02H 05H 08H | Memory 9 Exist | 00H-01H | Not Exist, Exist (Read Only) |
| 02H 05H 09H | Memory 10 Exist | 00H-01H | Not Exist, Exist (Read Only) |
| 02H 05H 0AH | Memory 11 Exist | 00H-01H | Not Exist, Exist (Read Only) |
| 02H 05H 0BH | Memory 12 Exist | 00H-01H | Not Exist, Exist (Read Only) |
| 02H 05H 0CH | Memory 13 Exist | 00H-01H | Not Exist, Exist (Read Only) |
| 02H 05H 0DH | Memory 14 Exist | 00H-01H | Not Exist, Exist (Read Only) |
| 02H 05H 0EH | Memory 15 Exist | 00H-01H | Not Exist, Exist (Read Only) |
| 02H 05H 0FH | Memory 16 Exist | 00H-01H | Not Exist, Exist (Read Only) |
| 02H 05H 10H | Memory 17 Exist | 00H-01H | Not Exist, Exist (Read Only) |
| 02H 05H 11H | Memory 18 Exist | 00H-01H | Not Exist, Exist (Read Only) |
| 02H 05H 12H | Memory 19 Exist | 00H-01H | Not Exist, Exist (Read Only) |
| 02H 05H 13H | Memory 20 Exist | 00H-01H | Not Exist, Exist (Read Only) |
| 02H 05H 14H | Memory 21 Exist | 00H-01H | Not Exist, Exist (Read Only) |
| 02H 05H 15H | Memory 22 Exist | 00H-01H | Not Exist, Exist (Read Only) |
| 02H 05H 16H | Memory 23 Exist | 00H-01H | Not Exist, Exist (Read Only) |
| 02H 05H 17H | Memory 24 Exist | 00H-01H | Not Exist, Exist (Read Only) |
| 02H 05H 18H | Memory 25 Exist | 00H-01H | Not Exist, Exist (Read Only) |
| 02H 05H 19H | Memory 26 Exist | 00H-01H | Not Exist, Exist (Read Only) |
| 02H 05H 1AH | Memory 27 Exist | 00H-01H | Not Exist, Exist (Read Only) |
| 02H 05H 1BH | Memory 28 Exist | 00H-01H | Not Exist, Exist (Read Only) |
| 02H 05H 1CH | Memory 29 Exist | 00H-01H | Not Exist, Exist (Read Only) |
| 02H 05H 1DH | Memory 30 Exist | 00H-01H | Not Exist, Exist (Read Only) |
| 02H 05H 1EH | Memory 31 Exist | 00H-01H | Not Exist, Exist (Read Only) |
| 02H 05H 1FH | Memory 32 Exist | 00H-01H | Not Exist, Exist (Read Only) |

○ Scene Memory Thumbnail Position

| Address | Parameter Name | Sys.Ex.Value | Meaning of Value |
|-------------|--|--------------|---|
| 02H 06H 00H | Memory 1 Thumbnail Position - Program Out | 00H-08H | Upper Left, Upper, Upper Right, Left, Center, Right, Lower Left, Lower, Lower Right |
| 02H 06H 01H | Memory 2 Thumbnail Position - Program Out | 00H-08H | Upper Left, Upper, Upper Right, Left, Center, Right, Lower Left, Lower, Lower Right |
| 02H 06H 02H | Memory 3 Thumbnail Position - Program Out | 00H-08H | Upper Left, Upper, Upper Right, Left, Center, Right, Lower Left, Lower, Lower Right |
| 02H 06H 03H | Memory 4 Thumbnail Position - Program Out | 00H-08H | Upper Left, Upper, Upper Right, Left, Center, Right, Lower Left, Lower, Lower Right |
| 02H 06H 04H | Memory 5 Thumbnail Position - Program Out | 00H-08H | Upper Left, Upper, Upper Right, Left, Center, Right, Lower Left, Lower, Lower Right |
| 02H 06H 05H | Memory 6 Thumbnail Position - Program Out | 00H-08H | Upper Left, Upper, Upper Right, Left, Center, Right, Lower Left, Lower, Lower Right |
| 02H 06H 06H | Memory 7 Thumbnail Position - Program Out | 00H-08H | Upper Left, Upper, Upper Right, Left, Center, Right, Lower Left, Lower, Lower Right |
| 02H 06H 07H | Memory 8 Thumbnail Position - Program Out | 00H-08H | Upper Left, Upper, Upper Right, Left, Center, Right, Lower Left, Lower, Lower Right |
| 02H 06H 08H | Memory 9 Thumbnail Position - Program Out | 00H-08H | Upper Left, Upper, Upper Right, Left, Center, Right, Lower Left, Lower, Lower Right |
| 02H 06H 09H | Memory 10 Thumbnail Position - Program Out | 00H-08H | Upper Left, Upper, Upper Right, Left, Center, Right, Lower Left, Lower, Lower Right |
| 02H 06H 0AH | Memory 11 Thumbnail Position - Program Out | 00H-08H | Upper Left, Upper, Upper Right, Left, Center, Right, Lower Left, Lower, Lower Right |
| 02H 06H 0BH | Memory 12 Thumbnail Position - Program Out | 00H-08H | Upper Left, Upper, Upper Right, Left, Center, Right, Lower Left, Lower, Lower Right |
| 02H 06H 0CH | Memory 13 Thumbnail Position - Program Out | 00H-08H | Upper Left, Upper, Upper Right, Left, Center, Right, Lower Left, Lower, Lower Right |
| 02H 06H 0DH | Memory 14 Thumbnail Position - Program Out | 00H-08H | Upper Left, Upper, Upper Right, Left, Center, Right, Lower Left, Lower, Lower Right |
| 02H 06H 0EH | Memory 15 Thumbnail Position - Program Out | 00H-08H | Upper Left, Upper, Upper Right, Left, Center, Right, Lower Left, Lower, Lower Right |
| 02H 06H 0FH | Memory 16 Thumbnail Position - Program Out | 00H-08H | Upper Left, Upper, Upper Right, Left, Center, Right, Lower Left, Lower, Lower Right |
| 02H 06H 10H | Memory 17 Thumbnail Position - Program Out | 00H-08H | Upper Left, Upper, Upper Right, Left, Center, Right, Lower Left, Lower, Lower Right |

| Address | Parameter Name | Sys.Ex.Value | Meaning of Value |
|-------------|--------------------------------------|--------------|---|
| 02H 06H 53H | Memory 20 Thumbnail Position - DSK 2 | 00H-08H | Upper Left, Upper, Upper Right, Left, Center, Right, Lower Left, Lower, Lower Right |
| 02H 06H 54H | Memory 21 Thumbnail Position - DSK 2 | 00H-08H | Upper Left, Upper, Upper Right, Left, Center, Right, Lower Left, Lower, Lower Right |
| 02H 06H 55H | Memory 22 Thumbnail Position - DSK 2 | 00H-08H | Upper Left, Upper, Upper Right, Left, Center, Right, Lower Left, Lower, Lower Right |
| 02H 06H 56H | Memory 23 Thumbnail Position - DSK 2 | 00H-08H | Upper Left, Upper, Upper Right, Left, Center, Right, Lower Left, Lower, Lower Right |
| 02H 06H 57H | Memory 24 Thumbnail Position - DSK 2 | 00H-08H | Upper Left, Upper, Upper Right, Left, Center, Right, Lower Left, Lower, Lower Right |
| 02H 06H 58H | Memory 25 Thumbnail Position - DSK 2 | 00H-08H | Upper Left, Upper, Upper Right, Left, Center, Right, Lower Left, Lower, Lower Right |
| 02H 06H 59H | Memory 26 Thumbnail Position - DSK 2 | 00H-08H | Upper Left, Upper, Upper Right, Left, Center, Right, Lower Left, Lower, Lower Right |
| 02H 06H 5AH | Memory 27 Thumbnail Position - DSK 2 | 00H-08H | Upper Left, Upper, Upper Right, Left, Center, Right, Lower Left, Lower, Lower Right |
| 02H 06H 5BH | Memory 28 Thumbnail Position - DSK 2 | 00H-08H | Upper Left, Upper, Upper Right, Left, Center, Right, Lower Left, Lower, Lower Right |
| 02H 06H 5CH | Memory 29 Thumbnail Position - DSK 2 | 00H-08H | Upper Left, Upper, Upper Right, Left, Center, Right, Lower Left, Lower, Lower Right |
| 02H 06H 5DH | Memory 30 Thumbnail Position - DSK 2 | 00H-08H | Upper Left, Upper, Upper Right, Left, Center, Right, Lower Left, Lower, Lower Right |
| 02H 06H 5EH | Memory 31 Thumbnail Position - DSK 2 | 00H-08H | Upper Left, Upper, Upper Right, Left, Center, Right, Lower Left, Lower, Lower Right |
| 02H 06H 5FH | Memory 32 Thumbnail Position - DSK 2 | 00H-08H | Upper Left, Upper, Upper Right, Left, Center, Right, Lower Left, Lower, Lower Right |

○ STILL IMAGE

| Address | Parameter Name | Sys.Ex.Value | Meaning of Value |
|-------------|--------------------------|--------------|------------------|
| 02H 07H 00H | Save To Internal Storage | 00H-01H | Disable, Enable |

○ Freeze

| Address | Parameter Name | Sys.Ex.Value | Meaning of Value |
|-------------|---------------------------|--------------|------------------|
| 02H 08H 00H | Freeze | 00H-01H | Off, On |
| 02H 08H 01H | Type | 00H-01H | All, Select |
| 02H 08H 02H | Freeze Select - HDMI In 1 | 00H-01H | Disable, Enable |
| 02H 08H 03H | Freeze Select - HDMI In 2 | 00H-01H | Disable, Enable |
| 02H 08H 04H | Freeze Select - HDMI In 3 | 00H-01H | Disable, Enable |
| 02H 08H 05H | Freeze Select - HDMI In 4 | 00H-01H | Disable, Enable |
| 02H 08H 06H | Freeze Select - HDMI In 5 | 00H-01H | Disable, Enable |
| 02H 08H 07H | Freeze Select - HDMI In 6 | 00H-01H | Disable, Enable |
| 02H 08H 08H | Freeze Select - SDI In 1 | 00H-01H | Disable, Enable |
| 02H 08H 09H | Freeze Select - SDI In 2 | 00H-01H | Disable, Enable |
| 02H 08H 0AH | Freeze Select - SDI In 3 | 00H-01H | Disable, Enable |
| 02H 08H 0BH | Freeze Select - SDI In 4 | 00H-01H | Disable, Enable |
| 02H 08H 0CH | Freeze Select - SDI In 5 | 00H-01H | Disable, Enable |
| 02H 08H 0DH | Freeze Select - SDI In 6 | 00H-01H | Disable, Enable |

○ AUTO SWITCHING

| Address | Parameter Name | Sys.Ex.Value | Meaning of Value |
|-------------|-----------------------------------|--------------|--|
| 02H 09H 00H | Auto Switching | 00H-01H | Off, On |
| 02H 09H 01H | Auto Switching Type | 00H-09H | Input Scan, Scene Memory Scan, Beat Sync, Video Follows Audio, PinP&Key 1 Scan-PinP&Key 4 Scan, DSK 1 Scan, DSK 2 Scan |
| 02H 09H 02H | Input Scan - Scan Sequence | 00H-02H | Normal, Reverse, Random |
| 02H 09H 03H | Input Scan - Scan Transition Time | 00H-28H | 0.0-4.0sec |
| 02H 09H 04H | Input Scan - Scan Target | 00H-06H | PGM/A & PST/B, PinP&Key 1-4, DSK 1-2 |
| 02H 09H 05H | Input Scan - Input 1 Time | 00H-78H | Off, 1-120sec |
| 02H 09H 06H | Input Scan - Input 2 Time | 00H-78H | Off, 1-120sec |
| 02H 09H 07H | Input Scan - Input 3 Time | 00H-78H | Off, 1-120sec |
| 02H 09H 08H | Input Scan - Input 4 Time | 00H-78H | Off, 1-120sec |

| Address | Parameter Name | Sys.Ex.Value | Meaning of Value |
|-------------|------------------------------------|--------------|--|
| 02H 09H 09H | Input Scan - Input 5 Time | 00H-78H | Off, 1-120sec |
| 02H 09H 0AH | Input Scan - Input 6 Time | 00H-78H | Off, 1-120sec |
| 02H 09H 0BH | Input Scan - Input 7 Time | 00H-78H | Off, 1-120sec |
| 02H 09H 0CH | Input Scan - Input 8 Time | 00H-78H | Off, 1-120sec |
| 02H 09H 0DH | Scene Memory Scan - Scan Sequence | 00H-02H | Normal, Reverse, Random |
| 02H 09H 0EH | Scene Memory Scan - Memory 1 Time | 00H-78H | Off, 1-120sec |
| : | : | : | : |
| 02H 09H 2DH | Scene Memory Scan - Memory 32 Time | 00H-78H | Off, 1-120sec |
| 02H 09H 2EH | Beat Sync - Sync Source | 00H-17H | Audio In 1-6, Audio In 7/8, Audio In 9/10, Usb In, Bluetooth In, Audio Player, HDMI In 1-6, SDI In 1-6, Video Player |
| 02H 09H 2FH | Beat Sync - Scan Sequence | 00H-02H | Normal, Reverse, Random |
| 02H 09H 30H | Beat Sync - Scan Transition Time | 00H-28H | 0.0-4.0sec |
| 02H 09H 31H | Beat Sync - Scan Cycle | 01H-0AH | 1-10 |
| 02H 09H 32H | Beat Sync - Scan Target | 00H-06H | PGM/A & PST/B, PinP&Key 1-4, DSK 1-2 |
| 02H 09H 33H | Beat Sync - Input 1 | 00H-01H | Off, On |
| 02H 09H 34H | Beat Sync - Input 2 | 00H-01H | Off, On |
| 02H 09H 35H | Beat Sync - Input 3 | 00H-01H | Off, On |
| 02H 09H 36H | Beat Sync - Input 4 | 00H-01H | Off, On |
| 02H 09H 37H | Beat Sync - Input 5 | 00H-01H | Off, On |
| 02H 09H 38H | Beat Sync - Input 6 | 00H-01H | Off, On |
| 02H 09H 39H | Beat Sync - Input 7 | 00H-01H | Off, On |
| 02H 09H 3AH | Beat Sync - Input 8 | 00H-01H | Off, On |

○ Auto Switching - PinP&Key 1 Scan

| Address | Parameter Name | Sys.Ex.Value | Meaning of Value |
|-------------|----------------------------------|--------------|-------------------------|
| 02H 0AH 00H | PinP&Key 1 Scan - Scan Sequence | 00H-02H | Normal, Reverse, Random |
| 02H 0AH 01H | PinP&Key 1 Scan - HDMI In 1 Time | 00H-78H | Off, 1-120sec |
| 02H 0AH 02H | PinP&Key 1 Scan - HDMI In 2 Time | 00H-78H | Off, 1-120sec |
| 02H 0AH 03H | PinP&Key 1 Scan - HDMI In 3 Time | 00H-78H | Off, 1-120sec |
| 02H 0AH 04H | PinP&Key 1 Scan - HDMI In 4 Time | 00H-78H | Off, 1-120sec |
| 02H 0AH 05H | PinP&Key 1 Scan - HDMI In 5 Time | 00H-78H | Off, 1-120sec |
| 02H 0AH 06H | PinP&Key 1 Scan - HDMI In 6 Time | 00H-78H | Off, 1-120sec |
| 02H 0AH 07H | PinP&Key 1 Scan - SDI In 1 Time | 00H-78H | Off, 1-120sec |
| 02H 0AH 08H | PinP&Key 1 Scan - SDI In 2 Time | 00H-78H | Off, 1-120sec |
| 02H 0AH 09H | PinP&Key 1 Scan - SDI In 3 Time | 00H-78H | Off, 1-120sec |
| 02H 0AH 0AH | PinP&Key 1 Scan - SDI In 4 Time | 00H-78H | Off, 1-120sec |
| 02H 0AH 0BH | PinP&Key 1 Scan - SDI In 5 Time | 00H-78H | Off, 1-120sec |
| 02H 0AH 0CH | PinP&Key 1 Scan - SDI In 6 Time | 00H-78H | Off, 1-120sec |
| 02H 0AH 0DH | PinP&Key 1 Scan - Still 1 Time | 00H-78H | Off, 1-120sec |
| 02H 0AH 0EH | PinP&Key 1 Scan - Still 2 Time | 00H-78H | Off, 1-120sec |
| 02H 0AH 0FH | PinP&Key 1 Scan - Still 3 Time | 00H-78H | Off, 1-120sec |
| 02H 0AH 10H | PinP&Key 1 Scan - Still 4 Time | 00H-78H | Off, 1-120sec |
| 02H 0AH 11H | PinP&Key 1 Scan - Still 5 Time | 00H-78H | Off, 1-120sec |
| 02H 0AH 12H | PinP&Key 1 Scan - Still 6 Time | 00H-78H | Off, 1-120sec |
| 02H 0AH 13H | PinP&Key 1 Scan - Still 7 Time | 00H-78H | Off, 1-120sec |
| 02H 0AH 14H | PinP&Key 1 Scan - Still 8 Time | 00H-78H | Off, 1-120sec |
| 02H 0AH 15H | PinP&Key 1 Scan - Still 9 Time | 00H-78H | Off, 1-120sec |
| 02H 0AH 16H | PinP&Key 1 Scan - Still 10 Time | 00H-78H | Off, 1-120sec |
| 02H 0AH 17H | PinP&Key 1 Scan - Still 11 Time | 00H-78H | Off, 1-120sec |
| 02H 0AH 18H | PinP&Key 1 Scan - Still 12 Time | 00H-78H | Off, 1-120sec |
| 02H 0AH 19H | PinP&Key 1 Scan - Still 13 Time | 00H-78H | Off, 1-120sec |
| 02H 0AH 1AH | PinP&Key 1 Scan - Still 14 Time | 00H-78H | Off, 1-120sec |

| Address | Parameter Name | Sys.Ex.Value | Meaning of Value |
|-------------|-------------------------------------|--------------|------------------|
| 02H 0AH 1BH | PinP&Key 1 Scan - Still 15 Time | 00H-78H | Off, 1-120sec |
| 02H 0AH 1CH | PinP&Key 1 Scan - Still 16 Time | 00H-78H | Off, 1-120sec |
| 02H 0AH 1DH | PinP&Key 1 Scan - Video Player Time | 00H-78H | Off, 1-120sec |

○ Auto Switching - PinP&Key 2 Scan

| Address | Parameter Name | Sys.Ex.Value | Meaning of Value |
|-------------|-------------------------------------|--------------|-------------------------|
| 02H 0BH 00H | PinP&Key 2 Scan - Scan Sequence | 00H-02H | Normal, Reverse, Random |
| 02H 0BH 01H | PinP&Key 2 Scan - HDMI In 1 Time | 00H-78H | Off, 1-120sec |
| 02H 0BH 02H | PinP&Key 2 Scan - HDMI In 2 Time | 00H-78H | Off, 1-120sec |
| 02H 0BH 03H | PinP&Key 2 Scan - HDMI In 3 Time | 00H-78H | Off, 1-120sec |
| 02H 0BH 04H | PinP&Key 2 Scan - HDMI In 4 Time | 00H-78H | Off, 1-120sec |
| 02H 0BH 05H | PinP&Key 2 Scan - HDMI In 5 Time | 00H-78H | Off, 1-120sec |
| 02H 0BH 06H | PinP&Key 2 Scan - HDMI In 6 Time | 00H-78H | Off, 1-120sec |
| 02H 0BH 07H | PinP&Key 2 Scan - SDI In 1 Time | 00H-78H | Off, 1-120sec |
| 02H 0BH 08H | PinP&Key 2 Scan - SDI In 2 Time | 00H-78H | Off, 1-120sec |
| 02H 0BH 09H | PinP&Key 2 Scan - SDI In 3 Time | 00H-78H | Off, 1-120sec |
| 02H 0BH 0AH | PinP&Key 2 Scan - SDI In 4 Time | 00H-78H | Off, 1-120sec |
| 02H 0BH 0BH | PinP&Key 2 Scan - SDI In 5 Time | 00H-78H | Off, 1-120sec |
| 02H 0BH 0CH | PinP&Key 2 Scan - SDI In 6 Time | 00H-78H | Off, 1-120sec |
| 02H 0BH 0DH | PinP&Key 2 Scan - Still 1 Time | 00H-78H | Off, 1-120sec |
| 02H 0BH 0EH | PinP&Key 2 Scan - Still 2 Time | 00H-78H | Off, 1-120sec |
| 02H 0BH 0FH | PinP&Key 2 Scan - Still 3 Time | 00H-78H | Off, 1-120sec |
| 02H 0BH 10H | PinP&Key 2 Scan - Still 4 Time | 00H-78H | Off, 1-120sec |
| 02H 0BH 11H | PinP&Key 2 Scan - Still 5 Time | 00H-78H | Off, 1-120sec |
| 02H 0BH 12H | PinP&Key 2 Scan - Still 6 Time | 00H-78H | Off, 1-120sec |
| 02H 0BH 13H | PinP&Key 2 Scan - Still 7 Time | 00H-78H | Off, 1-120sec |
| 02H 0BH 14H | PinP&Key 2 Scan - Still 8 Time | 00H-78H | Off, 1-120sec |
| 02H 0BH 15H | PinP&Key 2 Scan - Still 9 Time | 00H-78H | Off, 1-120sec |
| 02H 0BH 16H | PinP&Key 2 Scan - Still 10 Time | 00H-78H | Off, 1-120sec |
| 02H 0BH 17H | PinP&Key 2 Scan - Still 11 Time | 00H-78H | Off, 1-120sec |
| 02H 0BH 18H | PinP&Key 2 Scan - Still 12 Time | 00H-78H | Off, 1-120sec |
| 02H 0BH 19H | PinP&Key 2 Scan - Still 13 Time | 00H-78H | Off, 1-120sec |
| 02H 0BH 1AH | PinP&Key 2 Scan - Still 14 Time | 00H-78H | Off, 1-120sec |
| 02H 0BH 1BH | PinP&Key 2 Scan - Still 15 Time | 00H-78H | Off, 1-120sec |
| 02H 0BH 1CH | PinP&Key 2 Scan - Still 16 Time | 00H-78H | Off, 1-120sec |
| 02H 0BH 1DH | PinP&Key 2 Scan - Video Player Time | 00H-78H | Off, 1-120sec |

○ Auto Switching - PinP&Key 3 Scan

| Address | Parameter Name | Sys.Ex.Value | Meaning of Value |
|-------------|----------------------------------|--------------|-------------------------|
| 02H 0CH 00H | PinP&Key 3 Scan - Scan Sequence | 00H-02H | Normal, Reverse, Random |
| 02H 0CH 01H | PinP&Key 3 Scan - HDMI In 1 Time | 00H-78H | Off, 1-120sec |
| 02H 0CH 02H | PinP&Key 3 Scan - HDMI In 2 Time | 00H-78H | Off, 1-120sec |
| 02H 0CH 03H | PinP&Key 3 Scan - HDMI In 3 Time | 00H-78H | Off, 1-120sec |
| 02H 0CH 04H | PinP&Key 3 Scan - HDMI In 4 Time | 00H-78H | Off, 1-120sec |
| 02H 0CH 05H | PinP&Key 3 Scan - HDMI In 5 Time | 00H-78H | Off, 1-120sec |
| 02H 0CH 06H | PinP&Key 3 Scan - HDMI In 6 Time | 00H-78H | Off, 1-120sec |

| Address | Parameter Name | Sys.Ex.Value | Meaning of Value |
|-------------|-------------------------------------|--------------|------------------|
| 02H 0CH 07H | PinP&Key 3 Scan - SDI In 1 Time | 00H-78H | Off, 1-120sec |
| 02H 0CH 08H | PinP&Key 3 Scan - SDI In 2 Time | 00H-78H | Off, 1-120sec |
| 02H 0CH 09H | PinP&Key 3 Scan - SDI In 3 Time | 00H-78H | Off, 1-120sec |
| 02H 0CH 0AH | PinP&Key 3 Scan - SDI In 4 Time | 00H-78H | Off, 1-120sec |
| 02H 0CH 0BH | PinP&Key 3 Scan - SDI In 5 Time | 00H-78H | Off, 1-120sec |
| 02H 0CH 0CH | PinP&Key 3 Scan - SDI In 6 Time | 00H-78H | Off, 1-120sec |
| 02H 0CH 0DH | PinP&Key 3 Scan - Still 1 Time | 00H-78H | Off, 1-120sec |
| 02H 0CH 0EH | PinP&Key 3 Scan - Still 2 Time | 00H-78H | Off, 1-120sec |
| 02H 0CH 0FH | PinP&Key 3 Scan - Still 3 Time | 00H-78H | Off, 1-120sec |
| 02H 0CH 10H | PinP&Key 3 Scan - Still 4 Time | 00H-78H | Off, 1-120sec |
| 02H 0CH 11H | PinP&Key 3 Scan - Still 5 Time | 00H-78H | Off, 1-120sec |
| 02H 0CH 12H | PinP&Key 3 Scan - Still 6 Time | 00H-78H | Off, 1-120sec |
| 02H 0CH 13H | PinP&Key 3 Scan - Still 7 Time | 00H-78H | Off, 1-120sec |
| 02H 0CH 14H | PinP&Key 3 Scan - Still 8 Time | 00H-78H | Off, 1-120sec |
| 02H 0CH 15H | PinP&Key 3 Scan - Still 9 Time | 00H-78H | Off, 1-120sec |
| 02H 0CH 16H | PinP&Key 3 Scan - Still 10 Time | 00H-78H | Off, 1-120sec |
| 02H 0CH 17H | PinP&Key 3 Scan - Still 11 Time | 00H-78H | Off, 1-120sec |
| 02H 0CH 18H | PinP&Key 3 Scan - Still 12 Time | 00H-78H | Off, 1-120sec |
| 02H 0CH 19H | PinP&Key 3 Scan - Still 13 Time | 00H-78H | Off, 1-120sec |
| 02H 0CH 1AH | PinP&Key 3 Scan - Still 14 Time | 00H-78H | Off, 1-120sec |
| 02H 0CH 1BH | PinP&Key 3 Scan - Still 15 Time | 00H-78H | Off, 1-120sec |
| 02H 0CH 1CH | PinP&Key 3 Scan - Still 16 Time | 00H-78H | Off, 1-120sec |
| 02H 0CH 1DH | PinP&Key 3 Scan - Video Player Time | 00H-78H | Off, 1-120sec |

○ Auto Switching - PinP&Key 4 Scan

| Address | Parameter Name | Sys.Ex.Value | Meaning of Value |
|-------------|----------------------------------|--------------|-------------------------|
| 02H 0DH 00H | PinP&Key 4 Scan - Scan Sequence | 00H-02H | Normal, Reverse, Random |
| 02H 0DH 01H | PinP&Key 4 Scan - HDMI In 1 Time | 00H-78H | Off, 1-120sec |
| 02H 0DH 02H | PinP&Key 4 Scan - HDMI In 2 Time | 00H-78H | Off, 1-120sec |
| 02H 0DH 03H | PinP&Key 4 Scan - HDMI In 3 Time | 00H-78H | Off, 1-120sec |
| 02H 0DH 04H | PinP&Key 4 Scan - HDMI In 4 Time | 00H-78H | Off, 1-120sec |
| 02H 0DH 05H | PinP&Key 4 Scan - HDMI In 5 Time | 00H-78H | Off, 1-120sec |
| 02H 0DH 06H | PinP&Key 4 Scan - HDMI In 6 Time | 00H-78H | Off, 1-120sec |
| 02H 0DH 07H | PinP&Key 4 Scan - SDI In 1 Time | 00H-78H | Off, 1-120sec |
| 02H 0DH 08H | PinP&Key 4 Scan - SDI In 2 Time | 00H-78H | Off, 1-120sec |
| 02H 0DH 09H | PinP&Key 4 Scan - SDI In 3 Time | 00H-78H | Off, 1-120sec |
| 02H 0DH 0AH | PinP&Key 4 Scan - SDI In 4 Time | 00H-78H | Off, 1-120sec |
| 02H 0DH 0BH | PinP&Key 4 Scan - SDI In 5 Time | 00H-78H | Off, 1-120sec |
| 02H 0DH 0CH | PinP&Key 4 Scan - SDI In 6 Time | 00H-78H | Off, 1-120sec |
| 02H 0DH 0DH | PinP&Key 4 Scan - Still 1 Time | 00H-78H | Off, 1-120sec |
| 02H 0DH 0EH | PinP&Key 4 Scan - Still 2 Time | 00H-78H | Off, 1-120sec |
| 02H 0DH 0FH | PinP&Key 4 Scan - Still 3 Time | 00H-78H | Off, 1-120sec |
| 02H 0DH 10H | PinP&Key 4 Scan - Still 4 Time | 00H-78H | Off, 1-120sec |
| 02H 0DH 11H | PinP&Key 4 Scan - Still 5 Time | 00H-78H | Off, 1-120sec |
| 02H 0DH 12H | PinP&Key 4 Scan - Still 6 Time | 00H-78H | Off, 1-120sec |
| 02H 0DH 13H | PinP&Key 4 Scan - Still 7 Time | 00H-78H | Off, 1-120sec |
| 02H 0DH 14H | PinP&Key 4 Scan - Still 8 Time | 00H-78H | Off, 1-120sec |
| 02H 0DH 15H | PinP&Key 4 Scan - Still 9 Time | 00H-78H | Off, 1-120sec |
| 02H 0DH 16H | PinP&Key 4 Scan - Still 10 Time | 00H-78H | Off, 1-120sec |
| 02H 0DH 17H | PinP&Key 4 Scan - Still 11 Time | 00H-78H | Off, 1-120sec |
| 02H 0DH 18H | PinP&Key 4 Scan - Still 12 Time | 00H-78H | Off, 1-120sec |
| 02H 0DH 19H | PinP&Key 4 Scan - Still 13 Time | 00H-78H | Off, 1-120sec |
| 02H 0DH 1AH | PinP&Key 4 Scan - Still 14 Time | 00H-78H | Off, 1-120sec |
| 02H 0DH 1BH | PinP&Key 4 Scan - Still 15 Time | 00H-78H | Off, 1-120sec |

| Address | Parameter Name | Sys.Ex.Value | Meaning of Value |
|-------------|-------------------------------------|--------------|------------------|
| 02H 0DH 1CH | PinP&Key 4 Scan - Still 16 Time | 00H-78H | Off, 1-120sec |
| 02H 0DH 1DH | PinP&Key 4 Scan - Video Player Time | 00H-78H | Off, 1-120sec |

○ Auto Switching - DSK 1 Scan

| Address | Parameter Name | Sys.Ex.Value | Meaning of Value |
|-------------|--------------------------------|--------------|-------------------------|
| 02H 0EH 00H | DSK 1 Scan - Scan Sequence | 00H-02H | Normal, Reverse, Random |
| 02H 0EH 01H | DSK 1 Scan - HDMI In 1 Time | 00H-78H | Off, 1-120sec |
| 02H 0EH 02H | DSK 1 Scan - HDMI In 2 Time | 00H-78H | Off, 1-120sec |
| 02H 0EH 03H | DSK 1 Scan - HDMI In 3 Time | 00H-78H | Off, 1-120sec |
| 02H 0EH 04H | DSK 1 Scan - HDMI In 4 Time | 00H-78H | Off, 1-120sec |
| 02H 0EH 05H | DSK 1 Scan - HDMI In 5 Time | 00H-78H | Off, 1-120sec |
| 02H 0EH 06H | DSK 1 Scan - HDMI In 6 Time | 00H-78H | Off, 1-120sec |
| 02H 0EH 07H | DSK 1 Scan - SDI In 1 Time | 00H-78H | Off, 1-120sec |
| 02H 0EH 08H | DSK 1 Scan - SDI In 2 Time | 00H-78H | Off, 1-120sec |
| 02H 0EH 09H | DSK 1 Scan - SDI In 3 Time | 00H-78H | Off, 1-120sec |
| 02H 0EH 0AH | DSK 1 Scan - SDI In 4 Time | 00H-78H | Off, 1-120sec |
| 02H 0EH 0BH | DSK 1 Scan - SDI In 5 Time | 00H-78H | Off, 1-120sec |
| 02H 0EH 0CH | DSK 1 Scan - SDI In 6 Time | 00H-78H | Off, 1-120sec |
| 02H 0EH 0DH | DSK 1 Scan - Still 1 Time | 00H-78H | Off, 1-120sec |
| 02H 0EH 0EH | DSK 1 Scan - Still 2 Time | 00H-78H | Off, 1-120sec |
| 02H 0EH 0FH | DSK 1 Scan - Still 3 Time | 00H-78H | Off, 1-120sec |
| 02H 0EH 10H | DSK 1 Scan - Still 4 Time | 00H-78H | Off, 1-120sec |
| 02H 0EH 11H | DSK 1 Scan - Still 5 Time | 00H-78H | Off, 1-120sec |
| 02H 0EH 12H | DSK 1 Scan - Still 6 Time | 00H-78H | Off, 1-120sec |
| 02H 0EH 13H | DSK 1 Scan - Still 7 Time | 00H-78H | Off, 1-120sec |
| 02H 0EH 14H | DSK 1 Scan - Still 8 Time | 00H-78H | Off, 1-120sec |
| 02H 0EH 15H | DSK 1 Scan - Still 9 Time | 00H-78H | Off, 1-120sec |
| 02H 0EH 16H | DSK 1 Scan - Still 10 Time | 00H-78H | Off, 1-120sec |
| 02H 0EH 17H | DSK 1 Scan - Still 11 Time | 00H-78H | Off, 1-120sec |
| 02H 0EH 18H | DSK 1 Scan - Still 12 Time | 00H-78H | Off, 1-120sec |
| 02H 0EH 19H | DSK 1 Scan - Still 13 Time | 00H-78H | Off, 1-120sec |
| 02H 0EH 1AH | DSK 1 Scan - Still 14 Time | 00H-78H | Off, 1-120sec |
| 02H 0EH 1BH | DSK 1 Scan - Still 15 Time | 00H-78H | Off, 1-120sec |
| 02H 0EH 1CH | DSK 1 Scan - Still 16 Time | 00H-78H | Off, 1-120sec |
| 02H 0EH 1DH | DSK 1 Scan - Video Player Time | 00H-78H | Off, 1-120sec |

○ Auto Switching - DSK 2 Scan

| Address | Parameter Name | Sys.Ex.Value | Meaning of Value |
|-------------|-----------------------------|--------------|-------------------------|
| 02H 0FH 00H | DSK 2 Scan - Scan Sequence | 00H-02H | Normal, Reverse, Random |
| 02H 0FH 01H | DSK 2 Scan - HDMI In 1 Time | 00H-78H | Off, 1-120sec |
| 02H 0FH 02H | DSK 2 Scan - HDMI In 2 Time | 00H-78H | Off, 1-120sec |
| 02H 0FH 03H | DSK 2 Scan - HDMI In 3 Time | 00H-78H | Off, 1-120sec |
| 02H 0FH 04H | DSK 2 Scan - HDMI In 4 Time | 00H-78H | Off, 1-120sec |
| 02H 0FH 05H | DSK 2 Scan - HDMI In 5 Time | 00H-78H | Off, 1-120sec |
| 02H 0FH 06H | DSK 2 Scan - HDMI In 6 Time | 00H-78H | Off, 1-120sec |
| 02H 0FH 07H | DSK 2 Scan - SDI In 1 Time | 00H-78H | Off, 1-120sec |
| 02H 0FH 08H | DSK 2 Scan - SDI In 2 Time | 00H-78H | Off, 1-120sec |
| 02H 0FH 09H | DSK 2 Scan - SDI In 3 Time | 00H-78H | Off, 1-120sec |
| 02H 0FH 0AH | DSK 2 Scan - SDI In 4 Time | 00H-78H | Off, 1-120sec |
| 02H 0FH 0BH | DSK 2 Scan - SDI In 5 Time | 00H-78H | Off, 1-120sec |
| 02H 0FH 0CH | DSK 2 Scan - SDI In 6 Time | 00H-78H | Off, 1-120sec |
| 02H 0FH 0DH | DSK 2 Scan - Still 1 Time | 00H-78H | Off, 1-120sec |
| 02H 0FH 0EH | DSK 2 Scan - Still 2 Time | 00H-78H | Off, 1-120sec |
| 02H 0FH 0FH | DSK 2 Scan - Still 3 Time | 00H-78H | Off, 1-120sec |
| 02H 0FH 10H | DSK 2 Scan - Still 4 Time | 00H-78H | Off, 1-120sec |
| 02H 0FH 11H | DSK 2 Scan - Still 5 Time | 00H-78H | Off, 1-120sec |
| 02H 0FH 12H | DSK 2 Scan - Still 6 Time | 00H-78H | Off, 1-120sec |
| 02H 0FH 13H | DSK 2 Scan - Still 7 Time | 00H-78H | Off, 1-120sec |
| 02H 0FH 14H | DSK 2 Scan - Still 8 Time | 00H-78H | Off, 1-120sec |

| Address | Parameter Name | Sys.Ex.Value | Meaning of Value |
|-------------|--------------------------------|--------------|------------------|
| 02H 0FH 15H | DSK 2 Scan - Still 9 Time | 00H-78H | Off, 1-120sec |
| 02H 0FH 16H | DSK 2 Scan - Still 10 Time | 00H-78H | Off, 1-120sec |
| 02H 0FH 17H | DSK 2 Scan - Still 11 Time | 00H-78H | Off, 1-120sec |
| 02H 0FH 18H | DSK 2 Scan - Still 12 Time | 00H-78H | Off, 1-120sec |
| 02H 0FH 19H | DSK 2 Scan - Still 13 Time | 00H-78H | Off, 1-120sec |
| 02H 0FH 1AH | DSK 2 Scan - Still 14 Time | 00H-78H | Off, 1-120sec |
| 02H 0FH 1BH | DSK 2 Scan - Still 15 Time | 00H-78H | Off, 1-120sec |
| 02H 0FH 1CH | DSK 2 Scan - Still 16 Time | 00H-78H | Off, 1-120sec |
| 02H 0FH 1DH | DSK 2 Scan - Video Player Time | 00H-78H | Off, 1-120sec |

○ CTL/EXP

* xxH: 10H-11H (CTL/EXP 1, 2)

| Address | Parameter Name | Sys.Ex.Value | Meaning of Value |
|--------------------|----------------|-----------------|--|
| 02H xxH 00H | CTL/EXP TYPE | 00H-02H | Off, Ctl A & Ctl B, Exp |
| 02H xxH 01H 02H | CTL A ASSIGN | 00H 00H-06H 44H | See "Menu List" in the "Reference Manual" (PDF). |
| 02H xxH 03H 04H | CTL B ASSIGN | 00H 00H-06H 44H | |
| 02H xxH 05H | EXP ASSIGN | 00H-37H | |

○ RS-232/Tally/GPO/GPI/Keypad

| Address | Parameter Name | Sys.Ex.Value | Meaning of Value |
|--------------------|-----------------------------|-----------------|--|
| 02H 12H 00H | RS-232 | 00H-01H | Off, On |
| 02H 12H 01H | RS-232 - Baudrate | 00H-02H | 9600, 38400, 115200 |
| 02H 12H 02H | Tally/GPO - Template | 00H-04H | HDMI Tally, SDI Tally, GPO, HDMI Tally/GPO, SDI Tally/GPO |
| 02H 12H 03H | Tally/GPO - Tally/GPO 1 | 00H-59H | PGM HDMI In 1-6, PGM SDI In 1-6, PGM Still 1-16, PGM Video Player, PGM Input 1-8, PST HDMI In 1-6, PST SDI In 1-6, PST Still 1-16, PST Video Player, PST Input 1-8, GPO 1-16 |
| : | : | : | : |
| 02H 12H 12H | Tally/GPO - Tally/GPO 16 | 00H-59H | PGM HDMI In 1-6, PGM SDI In 1-6, PGM Still 1-16, PGM Video Player, PGM Input 1-8, PST HDMI In 1-6, PST SDI In 1-6, PST Still 1-16, PST Video Player, PST Input 1-8, GPO 1-16 |
| 02H 12H 13H 14H | GPI 1 | 00H 00H-06H 24H | See "Menu List" in the "Reference Manual" (PDF). |
| : | : | : | |
| 02H 12H 21H 22H | GPI 8 | 00H 00H-06H 24H | |
| 02H 12H 23H 24H | Numeric Keypad 0 | 00H 00H-06H 44H | |
| : | : | : | |
| 02H 12H 35H 36H | Numeric Keypad 9 | 00H 00H-06H 44H | |
| 02H 12H 37H 38H | Numeric Keypad + | 00H 00H-06H 44H | |
| 02H 12H 39H 3AH | Numeric Keypad - | 00H 00H-06H 44H | |
| 02H 12H 3BH 3CH | Numeric Keypad * | 00H 00H-06H 44H | |
| 02H 12H 3DH 3EH | Numeric Keypad / | 00H 00H-06H 44H | |
| 02H 12H 3FH 40H | Numeric Keypad . | 00H 00H-06H 44H | |
| 02H 12H 41H 42H | Numeric Keypad Enter | 00H 00H-06H 44H | |
| 02H 12H 43H | Tally Settings - AUX | 00H-01H | Disable, Enable |
| 02H 12H 44H | Tally Settings - PinP&Key 1 | 00H-01H | Disable, Enable |
| 02H 12H 45H | Tally Settings - PinP&Key 2 | 00H-01H | Disable, Enable |
| 02H 12H 46H | Tally Settings - PinP&Key 3 | 00H-01H | Disable, Enable |
| 02H 12H 47H | Tally Settings - PinP&Key 4 | 00H-01H | Disable, Enable |
| 02H 12H 48H | Tally Settings - DSK 1 | 00H-01H | Disable, Enable |
| 02H 12H 49H | Tally Settings - DSK 2 | 00H-01H | Disable, Enable |

○ Auto Switching - Video Follows Audio

| Address | Parameter Name | Sys.Ex.Value | Meaning of Value |
|--------------------|---|-----------------|--|
| 02H 13H 00H 01H | Video Follows Audio - Audio In 1 Target | 00H 00H-01H 0CH | Off, Input 1-8, Memory 1-32, Macro 1-100 |
| 02H 13H 02H 03H | Video Follows Audio - Audio In 2 Target | 00H 00H-01H 0CH | Off, Input 1-8, Memory 1-32, Macro 1-100 |
| 02H 13H 04H 05H | Video Follows Audio - Audio In 3 Target | 00H 00H-01H 0CH | Off, Input 1-8, Memory 1-32, Macro 1-100 |
| 02H 13H 06H 07H | Video Follows Audio - Audio In 4 Target | 00H 00H-01H 0CH | Off, Input 1-8, Memory 1-32, Macro 1-100 |
| 02H 13H 08H 09H | Video Follows Audio - Audio In 5 Target | 00H 00H-01H 0CH | Off, Input 1-8, Memory 1-32, Macro 1-100 |
| 02H 13H 0AH 0BH | Video Follows Audio - Audio In 6 Target | 00H 00H-01H 0CH | Off, Input 1-8, Memory 1-32, Macro 1-100 |
| 02H 13H 0CH 0DH | Video Follows Audio - Audio In 7/8 Target | 00H 00H-01H 0CH | Off, Input 1-8, Memory 1-32, Macro 1-100 |
| 02H 13H 0EH 0FH | Video Follows Audio - Audio In 9/10 Target | 00H 00H-01H 0CH | Off, Input 1-8, Memory 1-32, Macro 1-100 |
| 02H 13H 10H 11H | Video Follows Audio - USB In Target | 00H 00H-01H 0CH | Off, Input 1-8, Memory 1-32, Macro 1-100 |
| 02H 13H 12H 13H | Video Follows Audio - Bluetooth In Target | 00H 00H-01H 0CH | Off, Input 1-8, Memory 1-32, Macro 1-100 |
| 02H 13H 14H 15H | Video Follows Audio - Audio Player Target | 00H 00H-01H 0CH | Off, Input 1-8, Memory 1-32, Macro 1-100 |
| 02H 13H 16H 17H | Video Follows Audio - HDMI In 1 Target | 00H 00H-01H 0CH | Off, Input 1-8, Memory 1-32, Macro 1-100 |
| 02H 13H 18H 19H | Video Follows Audio - HDMI In 2 Target | 00H 00H-01H 0CH | Off, Input 1-8, Memory 1-32, Macro 1-100 |
| 02H 13H 1AH 1BH | Video Follows Audio - HDMI In 3 Target | 00H 00H-01H 0CH | Off, Input 1-8, Memory 1-32, Macro 1-100 |
| 02H 13H 1CH 1DH | Video Follows Audio - HDMI In 4 Target | 00H 00H-01H 0CH | Off, Input 1-8, Memory 1-32, Macro 1-100 |
| 02H 13H 1EH 1FH | Video Follows Audio - HDMI In 5 Target | 00H 00H-01H 0CH | Off, Input 1-8, Memory 1-32, Macro 1-100 |
| 02H 13H 20H 21H | Video Follows Audio - HDMI In 6 Target | 00H 00H-01H 0CH | Off, Input 1-8, Memory 1-32, Macro 1-100 |
| 02H 13H 22H 23H | Video Follows Audio - SDI In 1 Target | 00H 00H-01H 0CH | Off, Input 1-8, Memory 1-32, Macro 1-100 |
| 02H 13H 24H 25H | Video Follows Audio - SDI In 2 Target | 00H 00H-01H 0CH | Off, Input 1-8, Memory 1-32, Macro 1-100 |
| 02H 13H 26H 27H | Video Follows Audio - SDI In 3 Target | 00H 00H-01H 0CH | Off, Input 1-8, Memory 1-32, Macro 1-100 |
| 02H 13H 28H 29H | Video Follows Audio - SDI In 4 Target | 00H 00H-01H 0CH | Off, Input 1-8, Memory 1-32, Macro 1-100 |
| 02H 13H 2AH 2BH | Video Follows Audio - SDI In 5 Target | 00H 00H-01H 0CH | Off, Input 1-8, Memory 1-32, Macro 1-100 |
| 02H 13H 2CH 2DH | Video Follows Audio - SDI In 6 Target | 00H 00H-01H 0CH | Off, Input 1-8, Memory 1-32, Macro 1-100 |
| 02H 13H 2EH 2FH | Video Follows Audio - Video Player Target | 00H 00H-01H 0CH | Off, Input 1-8, Memory 1-32, Macro 1-100 |
| 02H 13H 30H | Video Follows Audio - Audio In 1 Threshold | 4EH-00H | -50-0 dB |
| 02H 13H 31H | Video Follows Audio - Audio In 2 Threshold | 4EH-00H | -50-0 dB |
| 02H 13H 32H | Video Follows Audio - Audio In 3 Threshold | 4EH-00H | -50-0 dB |
| 02H 13H 33H | Video Follows Audio - Audio In 4 Threshold | 4EH-00H | -50-0 dB |
| 02H 13H 34H | Video Follows Audio - Audio In 5 Threshold | 4EH-00H | -50-0 dB |
| 02H 13H 35H | Video Follows Audio - Audio In 6 Threshold | 4EH-00H | -50-0 dB |
| 02H 13H 36H | Video Follows Audio - Audio In 7/8 Threshold | 4EH-00H | -50-0 dB |
| 02H 13H 37H | Video Follows Audio - Audio In 9/10 Threshold | 4EH-00H | -50-0 dB |
| 02H 13H 38H | Video Follows Audio - USB In Threshold | 4EH-00H | -50-0 dB |

| Address | Parameter Name | Sys.Ex.Value | Meaning of Value |
|--------------------|--|-----------------|--|
| 02H 13H 39H | Video Follows Audio - Bluetooth In Threshold | 4EH-00H | -50-0 dB |
| 02H 13H 3AH | Video Follows Audio - Audio Player Threshold | 4EH-00H | -50-0 dB |
| 02H 13H 3BH | Video Follows Audio - HDMI In 1 Threshold | 4EH-00H | -50-0 dB |
| 02H 13H 3CH | Video Follows Audio - HDMI In 2 Threshold | 4EH-00H | -50-0 dB |
| 02H 13H 3DH | Video Follows Audio - HDMI In 3 Threshold | 4EH-00H | -50-0 dB |
| 02H 13H 3EH | Video Follows Audio - HDMI In 4 Threshold | 4EH-00H | -50-0 dB |
| 02H 13H 3FH | Video Follows Audio - HDMI In 5 Threshold | 4EH-00H | -50-0 dB |
| 02H 13H 40H | Video Follows Audio - HDMI In 6 Threshold | 4EH-00H | -50-0 dB |
| 02H 13H 41H | Video Follows Audio - SDI In 1 Threshold | 4EH-00H | -50-0 dB |
| 02H 13H 42H | Video Follows Audio - SDI In 2 Threshold | 4EH-00H | -50-0 dB |
| 02H 13H 43H | Video Follows Audio - SDI In 3 Threshold | 4EH-00H | -50-0 dB |
| 02H 13H 44H | Video Follows Audio - SDI In 4 Threshold | 4EH-00H | -50-0 dB |
| 02H 13H 45H | Video Follows Audio - SDI In 5 Threshold | 4EH-00H | -50-0 dB |
| 02H 13H 46H | Video Follows Audio - SDI In 6 Threshold | 4EH-00H | -50-0 dB |
| 02H 13H 47H | Video Follows Audio - Video Player Threshold | 4EH-00H | -50-0 dB |
| 02H 13H 48H 49H | Video Follows Audio - Mix Target | 00H 00H-01H 0CH | Off, Input 1-8, Memory 1-32, Macro 1-100 |
| 02H 13H 4AH 4BH | Video Follows Audio - Silent Target | 00H 00H-01H 0CH | Off, Input 1-8, Memory 1-32, Macro 1-100 |
| 02H 13H 4CH 4DH | Video Follows Audio - Redetection Time | 00H 00H-02H 2CH | 0.0-30.0sec |
| 02H 13H 4EH | Video Follows Audio - Scan Transition Time | 00H-28H | 0.0-4.0sec |

Preview Label

* xxH: 13H-40H (HDMI In 1-6, SDI In 1-6, Still 1-16, Program, Sub Program, Preview, AUX)

| Address | Parameter Name | Sys.Ex.Value | Meaning of Value |
|-------------|----------------|--------------|------------------|
| 02H xxH 00H | LABEL (0) | 00H-7FH | |
| 02H xxH 01H | LABEL (1) | 00H-7FH | |
| 02H xxH 02H | LABEL (2) | 00H-7FH | |
| 02H xxH 03H | LABEL (3) | 00H-7FH | |
| 02H xxH 04H | LABEL (4) | 00H-7FH | |
| 02H xxH 05H | LABEL (5) | 00H-7FH | |
| 02H xxH 06H | LABEL (6) | 00H-7FH | |
| 02H xxH 07H | LABEL (7) | 00H-7FH | |

○ Camera Control Common

| Address | Parameter Name | Sys.Ex.Value | Meaning of Value |
|-------------|---------------------|--------------|------------------|
| 02H 50H 00H | Camera ID | 00H-0BH | Camera 1-12 |
| 02H 50H 01H | Camera Control Mode | 00H-01H | Off, On |
| 02H 50H 02H | All Cameras Load | 00H-01H | Off, On |

○ Camera Control

* xxH: 51H-5CH (Camera 1-12)

| Address | Parameter Name | Sys.Ex.Value | Meaning of Value |
|-------------|----------------|--------------|--|
| 02H xxH 00H | Protocol | 00H-06H | N/A, JVC, Panasonic, Canon, VISCA over IP, PTZOptics, Avonic |

| Address | Parameter Name | Sys.Ex.Value | Meaning of Value |
|--------------------|----------------|-----------------|--|
| 02H xxH 01H 02H | IP Address 1 | 00H 00H–01H 7FH | 0–255 |
| 02H xxH 03H 04H | IP Address 2 | 00H 00H–01H 7FH | 0–255 |
| 02H xxH 05H 06H | IP Address 3 | 00H 00H–01H 7FH | 0–255 |
| 02H xxH 07H 08H | IP Address 4 | 00H 00H–01H 7FH | 0–255 |
| 02H xxH 09H | Login Name 1 | 00H–7FH | |
| 02H xxH 0AH | Login Name 2 | 00H–7FH | |
| 02H xxH 0BH | Login Name 3 | 00H–7FH | |
| 02H xxH 0CH | Login Name 4 | 00H–7FH | |
| 02H xxH 0DH | Login Name 5 | 00H–7FH | |
| 02H xxH 0EH | Login Name 6 | 00H–7FH | |
| 02H xxH 0FH | Login Name 7 | 00H–7FH | |
| 02H xxH 10H | Login Name 8 | 00H–7FH | |
| 02H xxH 11H | Password 1 | 00H–7FH | |
| 02H xxH 12H | Password 2 | 00H–7FH | |
| 02H xxH 13H | Password 3 | 00H–7FH | |
| 02H xxH 14H | Password 4 | 00H–7FH | |
| 02H xxH 15H | Password 5 | 00H–7FH | |
| 02H xxH 16H | Password 6 | 00H–7FH | |
| 02H xxH 17H | Password 7 | 00H–7FH | |
| 02H xxH 18H | Password 8 | 00H–7FH | |
| 02H xxH 19H | Password 9 | 00H–7FH | |
| 02H xxH 1AH | Password 10 | 00H–7FH | |
| 02H xxH 1BH | Password 11 | 00H–7FH | |
| 02H xxH 1CH | Password 12 | 00H–7FH | |
| 02H xxH 1DH | Password 13 | 00H–7FH | |
| 02H xxH 1EH | Password 14 | 00H–7FH | |
| 02H xxH 1FH | Password 15 | 00H–7FH | |
| 02H xxH 20H | Password 16 | 00H–7FH | |
| 02H xxH 21H | Current Preset | 7FH–00H–07H | None, Preset 1–8 (Read Only) |
| 02H xxH 22H | Pan | 7FH, 00H, 01H | Left, Stop, Light |
| 02H xxH 23H | Tilt | 7FH, 00H, 01H | Down, Stop, Up |
| 02H xxH 24H | Pan/Tilt Speed | 01H–18H | 1–24 |
| 02H xxH 25H | Zoom | 7EH–00H–02H | Wide (Fast), Wide (Slow), Stop, Tele (Slow), Tele (Fast) |
| 02H xxH 26H | Focus | 7FH, 00H, 01H | Near, Stop, Far |
| 02H xxH 27H | Auto Focus | 00H–01H | Off, On |
| 02H xxH 28H | Exposure | 00H–01H | Manual, Auto |
| 02H xxH 29H | Tally Channel | 00H–0BH | HDMI In 1–6, SDI In 1–6 |

○ Audio Player Common

| Address | Parameter Name | Sys.Ex.Value | Meaning of Value |
|-------------|-------------------|--------------|------------------|
| 02H 61H 00H | Audio Player Bank | 00H–01H | Bank A, Bank B |

○ Audio Player

* xxH: 62H–71H (Audio Player A 1–8, Audio Player B 1–8)

| Address | Parameter Name | Sys.Ex.Value | Meaning of Value |
|---------------------------|---------------------|--|--------------------------|
| 02H xxH 00H | Audio Player Name 1 | 00H–7FH | |
| 02H xxH 01H | Audio Player Name 2 | 00H–7FH | |
| 02H xxH 02H | Audio Player Name 3 | 00H–7FH | |
| 02H xxH 03H | Audio Player Name 4 | 00H–7FH | |
| 02H xxH 04H | Audio Player Name 5 | 00H–7FH | |
| 02H xxH 05H | Audio Player Name 6 | 00H–7FH | |
| 02H xxH 06H | Audio Player Name 7 | 00H–7FH | |
| 02H xxH 07H | Audio Player Name 8 | 00H–7FH | |
| 02H xxH 08H 09H 0AH | Level | 7EH 00H 00H, 7FH 79H 60H–00H 00H 00H–00H 00H 64H | -INFdB, -80.0–0.0–10.0dB |
| 02H xxH 0BH | Fade In Time | 00H–64H | 0.0–10.0sec |

| Address | Parameter Name | Sys.Ex.Value | Meaning of Value |
|---|----------------|--|---|
| 02H xxH 0CH | Fade Out Time | 00H–64H | 0.0–10.0sec |
| 02H xxH 0DH | Repeat | 00H–01H | Off, On |
| 02H xxH 0EH | Pad Mode | 00H–03H | Latch, Pause, Replay, Momentary |
| 02H xxH 0FH | Pad Color | 00H–09H | White, Red, Green, Blue, Yellow, Magenta, Cyan, Dark Orange, Turquoise Green, Purple |
| 02H xxH 10H | Playing Mode | 00H–02H | BGM, SE, Solo |
| 02H xxH 11H 12H 13H 14H 15H | Offset Time | 00H 00H 00H 00H 00H–07H 7FH 7FH 7FH 7FH | 0.0–214748364.7sec * The actual maximum value depends on the length of the audio file. |

○ Video Player

| Address | Parameter Name | Sys.Ex.Value | Meaning of Value | | | | |
|---|----------------|--|--|--|--|---------|---------------------------|
| 02H 72H 00H 01H 02H 03H 04H | Start Time | 7FH 7FH 7FH 7FH 7FH–00H 00H 00H 00H 00H–07H 7FH 7FH 7FH 7FH | None, 0.0–2147483.647sec * The actual maximum value depends on the length of the audio file. (Read Only) | | | | |
| 02H 72H 05H 06H 07H 08H 09H | | | End Time | 7FH 7FH 7FH 7FH 7FH–00H 00H 00H 00H 00H–07H 7FH 7FH 7FH 7FH | None, 0.0–2147483.647sec * The actual maximum value depends on the length of the audio file. (Read Only) | | |
| 02H 72H 0AH | | | | | Skip Forward Time | 00H–03H | 1sec, 10sec, 30sec, 60sec |
| 02H 72H 0BH | | | | | Skip Backward Time | 00H–03H | 1sec, 10sec, 30sec, 60sec |
| 02H 72H 0CH | | | | | Repeat | 00H–01H | Off, On |

○ Date&Time

| Address | Parameter Name | Sys.Ex.Value | Meaning of Value |
|--------------------|--------------------|--------------|--|
| 02H 73H 00H 01H | reserved | | |
| 02H 73H 02H | Date Format | 00H–02H | Month/Day/Year, Day/Month/Year, Year/Month/Day |
| 02H 73H 03H | Clock Display Type | 00H–01H | Analog, Digital |
| 02H 73H 04H | Configure | 00H–01H | Manual, Using NTP |
| 02H 73H 05H | NTP Server 1 | 00H–7FH | |
| : | : | : | : |
| 02H 73H 24H | NTP Server 32 | 00H–7FH | |

● Command Area

○ Scene Memory

| Address | Parameter Name | Sys.Ex.Value | Meaning of Value |
|-------------|---------------------------|--------------|--------------------------|
| 0AH 00H 00H | Memory Load Trigger | 7FH–00H–1FH | None, Memory 1–32 |
| 0AH 00H 01H | Memory Save Trigger | 7FH–00H–1FH | None, Memory 1–32 |
| 0AH 00H 02H | Memory Initialize Trigger | 7FH–00H–1FH | None, Memory 1–32 |
| 0AH 00H 03H | Loaded Memory Number | 7FH–00H–1FH | Last Memory, Memory 1–32 |

● Tally Area

○ Tally Info

| Address | Parameter Name | Sys.Ex.Value | Meaning of Value |
|-------------|-----------------|--------------|---------------------------|
| 0CH 00H 00H | HDMI In 1 Tally | 00H–02H | Off, PGM, PST (Read Only) |
| 0CH 00H 01H | HDMI In 2 Tally | 00H–02H | Off, PGM, PST (Read Only) |
| 0CH 00H 02H | HDMI In 3 Tally | 00H–02H | Off, PGM, PST (Read Only) |
| 0CH 00H 03H | HDMI In 4 Tally | 00H–02H | Off, PGM, PST (Read Only) |
| 0CH 00H 04H | HDMI In 5 Tally | 00H–02H | Off, PGM, PST (Read Only) |
| 0CH 00H 05H | HDMI In 6 Tally | 00H–02H | Off, PGM, PST (Read Only) |
| 0CH 00H 06H | SDI In 1 Tally | 00H–02H | Off, PGM, PST (Read Only) |

| Address | Parameter Name | Sys.Ex.Value | Meaning of Value |
|-------------|--------------------|--------------|---------------------------|
| 0CH 00H 07H | SDI In 2 Tally | 00H–02H | Off, PGM, PST (Read Only) |
| 0CH 00H 08H | SDI In 3 Tally | 00H–02H | Off, PGM, PST (Read Only) |
| 0CH 00H 09H | SDI In 4 Tally | 00H–02H | Off, PGM, PST (Read Only) |
| 0CH 00H 0AH | SDI In 5 Tally | 00H–02H | Off, PGM, PST (Read Only) |
| 0CH 00H 0BH | SDI In 6 Tally | 00H–02H | Off, PGM, PST (Read Only) |
| 0CH 00H 0CH | Sill 1 Tally | 00H–02H | Off, PGM, PST (Read Only) |
| 0CH 00H 0DH | Sill 2 Tally | 00H–02H | Off, PGM, PST (Read Only) |
| 0CH 00H 0EH | Sill 3 Tally | 00H–02H | Off, PGM, PST (Read Only) |
| 0CH 00H 0FH | Sill 4 Tally | 00H–02H | Off, PGM, PST (Read Only) |
| 0CH 00H 10H | Sill 5 Tally | 00H–02H | Off, PGM, PST (Read Only) |
| 0CH 00H 11H | Sill 6 Tally | 00H–02H | Off, PGM, PST (Read Only) |
| 0CH 00H 12H | Sill 7 Tally | 00H–02H | Off, PGM, PST (Read Only) |
| 0CH 00H 13H | Sill 8 Tally | 00H–02H | Off, PGM, PST (Read Only) |
| 0CH 00H 14H | Sill 9 Tally | 00H–02H | Off, PGM, PST (Read Only) |
| 0CH 00H 15H | Sill 10 Tally | 00H–02H | Off, PGM, PST (Read Only) |
| 0CH 00H 16H | Sill 11 Tally | 00H–02H | Off, PGM, PST (Read Only) |
| 0CH 00H 17H | Sill 12 Tally | 00H–02H | Off, PGM, PST (Read Only) |
| 0CH 00H 18H | Sill 13 Tally | 00H–02H | Off, PGM, PST (Read Only) |
| 0CH 00H 19H | Sill 14 Tally | 00H–02H | Off, PGM, PST (Read Only) |
| 0CH 00H 1AH | Sill 15 Tally | 00H–02H | Off, PGM, PST (Read Only) |
| 0CH 00H 1BH | Sill 16 Tally | 00H–02H | Off, PGM, PST (Read Only) |
| 0CH 00H 1CH | Video Player Tally | 00H–02H | Off, PGM, PST (Read Only) |
| 0CH 00H 1DH | Input 1 Tally | 00H–02H | Off, PGM, PST (Read Only) |
| 0CH 00H 1EH | Input 2 Tally | 00H–02H | Off, PGM, PST (Read Only) |
| 0CH 00H 1FH | Input 3 Tally | 00H–02H | Off, PGM, PST (Read Only) |
| 0CH 00H 20H | Input 4 Tally | 00H–02H | Off, PGM, PST (Read Only) |
| 0CH 00H 21H | Input 5 Tally | 00H–02H | Off, PGM, PST (Read Only) |
| 0CH 00H 22H | Input 6 Tally | 00H–02H | Off, PGM, PST (Read Only) |
| 0CH 00H 23H | Input 7 Tally | 00H–02H | Off, PGM, PST (Read Only) |
| 0CH 00H 24H | Input 8 Tally | 00H–02H | Off, PGM, PST (Read Only) |

● Video Parameter (Memory 1) Area, Audio Parameter (Memory 1) Area–Video Parameter (Memory 32) Area, Audio Parameter (Memory 32) Area

○ Memory

* xxH xxH: The second and third bytes of the parameter address for the video/audio area to read/write

| Address | Parameter Name | Sys.Ex.Value | Meaning of Value |
|-------------|-----------------------------|--------------|--|
| 10H 00H 00H | Video Parameter (Memory 1) | | Load/rewrite video parameter stored in Memory 1 |
| 11H 00H 00H | Audio Parameter (Memory 1) | | Load/rewrite audio parameter stored in Memory 1 |
| 12H 00H 00H | Video Parameter (Memory 2) | | Load/rewrite video parameter stored in Memory 2 |
| 13H 00H 00H | Audio Parameter (Memory 2) | | Load/rewrite audio parameter stored in Memory 2 |
| 14H 00H 00H | Video Parameter (Memory 3) | | Load/rewrite video parameter stored in Memory 3 |
| 15H 00H 00H | Audio Parameter (Memory 3) | | Load/rewrite audio parameter stored in Memory 3 |
| 16H 00H 00H | Video Parameter (Memory 4) | | Load/rewrite video parameter stored in Memory 4 |
| 17H 00H 00H | Audio Parameter (Memory 4) | | Load/rewrite audio parameter stored in Memory 4 |
| 18H 00H 00H | Video Parameter (Memory 5) | | Load/rewrite video parameter stored in Memory 5 |
| 19H 00H 00H | Audio Parameter (Memory 5) | | Load/rewrite audio parameter stored in Memory 5 |
| 1AH 00H 00H | Video Parameter (Memory 6) | | Load/rewrite video parameter stored in Memory 6 |
| 1BH 00H 00H | Audio Parameter (Memory 6) | | Load/rewrite audio parameter stored in Memory 6 |
| 1CH 00H 00H | Video Parameter (Memory 7) | | Load/rewrite video parameter stored in Memory 7 |
| 1DH 00H 00H | Audio Parameter (Memory 7) | | Load/rewrite audio parameter stored in Memory 7 |
| 1EH 00H 00H | Video Parameter (Memory 8) | | Load/rewrite video parameter stored in Memory 8 |
| 1FH 00H 00H | Audio Parameter (Memory 8) | | Load/rewrite audio parameter stored in Memory 8 |
| : | : | | |
| : | : | | |
| 4EH 00H 00H | Video Parameter (Memory 32) | | Load/rewrite video parameter stored in Memory 32 |

| Address | Parameter Name | Sys.Ex.Value | Meaning of Value |
|-------------|-----------------------------|--------------|--|
| 4FH 00H 00H | Audio Parameter (Memory 32) | | Load/rewrite audio parameter stored in Memory 32 |

● Memory Name Area

* xxH: 00H–1FH (Memory 1–32)

| Address | Parameter Name | Sys.Ex.Value | Meaning of Value |
|-------------|----------------|--------------|---|
| 60H xxH 00H | Name (0) | | Name of preset memory number xx (1st character) |
| 60H xxH 01H | Name (1) | | Name of preset memory number xx (2nd character) |
| 60H xxH 02H | Name (2) | | Name of preset memory number xx (3rd character) |
| 60H xxH 03H | Name (3) | | Name of preset memory number xx (4th character) |
| 60H xxH 04H | Name (4) | | Name of preset memory number xx (5th character) |
| 60H xxH 05H | Name (5) | | Name of preset memory number xx (6th character) |
| 60H xxH 06H | Name (6) | | Name of preset memory number xx (7th character) |
| 60H xxH 07H | Name (7) | | Name of preset memory number xx (8th character) |

3. Supplementary Material

● Decimal and Hexadecimal Table

(Hexadecimal Numbers are Indicated by "H")

In MIDI documentation, data values and addresses/sizes of exclusive messages etc. are expressed as hexadecimal values for each 7 bits.

The following table shows how these correspond to decimal numbers.

| D | H | D | H | D | H | D | H |
|----|-----|----|-----|----|-----|-----|-----|
| 0 | 00H | 32 | 20H | 64 | 40H | 96 | 60H |
| 1 | 01H | 33 | 21H | 65 | 41H | 97 | 61H |
| 2 | 02H | 34 | 22H | 66 | 42H | 98 | 62H |
| 3 | 03H | 35 | 23H | 67 | 43H | 99 | 63H |
| 4 | 04H | 36 | 24H | 68 | 44H | 100 | 64H |
| 5 | 05H | 37 | 25H | 69 | 45H | 101 | 65H |
| 6 | 06H | 38 | 26H | 70 | 46H | 102 | 66H |
| 7 | 07H | 39 | 27H | 71 | 47H | 103 | 67H |
| 8 | 08H | 40 | 28H | 72 | 48H | 104 | 68H |
| 9 | 09H | 41 | 29H | 73 | 49H | 105 | 69H |
| 10 | 0AH | 42 | 2AH | 74 | 4AH | 106 | 6AH |
| 11 | 0BH | 43 | 2BH | 75 | 4BH | 107 | 6BH |
| 12 | 0CH | 44 | 2CH | 76 | 4CH | 108 | 6CH |
| 13 | 0DH | 45 | 2DH | 77 | 4DH | 109 | 6DH |
| 14 | 0EH | 46 | 2EH | 78 | 4EH | 110 | 6EH |
| 15 | 0FH | 47 | 2FH | 79 | 4FH | 111 | 6FH |
| 16 | 10H | 48 | 30H | 80 | 50H | 112 | 70H |
| 17 | 11H | 49 | 31H | 81 | 51H | 113 | 71H |
| 18 | 12H | 50 | 32H | 82 | 52H | 114 | 72H |
| 19 | 13H | 51 | 33H | 83 | 53H | 115 | 73H |
| 20 | 14H | 52 | 34H | 84 | 54H | 116 | 74H |
| 21 | 15H | 53 | 35H | 85 | 55H | 117 | 75H |
| 22 | 16H | 54 | 36H | 86 | 56H | 118 | 76H |
| 23 | 17H | 55 | 37H | 87 | 57H | 119 | 77H |
| 24 | 18H | 56 | 38H | 88 | 58H | 120 | 78H |
| 25 | 19H | 57 | 39H | 89 | 59H | 121 | 79H |
| 26 | 1AH | 58 | 3AH | 90 | 5AH | 122 | 7AH |
| 27 | 1BH | 59 | 3BH | 91 | 5BH | 123 | 7BH |
| 28 | 1CH | 60 | 3CH | 92 | 5CH | 124 | 7CH |
| 29 | 1DH | 61 | 3DH | 93 | 5DH | 125 | 7DH |
| 30 | 1EH | 62 | 3EH | 94 | 5EH | 126 | 7EH |
| 31 | 1FH | 63 | 3FH | 95 | 5FH | 127 | 7FH |

D: decimal

H: hexadecimal

- * Decimal expressions used for MIDI channel, bank select, and program change are 1 greater than the decimal value shown in the above table.
- * Hexadecimal values in 7-bit units can express a maximum of 128 levels in one byte of data. If the data requires greater resolution, two or more bytes are used. For example, a value indicated by a hexadecimal expression in two 7-bit bytes aa bbH would be $aa \times 128 + bb$.
- * Data marked "nibbled" is expressed in hexadecimal in 4-bit units. A value expressed as a 2-byte nibble 0a 0bH has the value of $a \times 16 + b$.

<Example 1>

What is the decimal expression of 5AH?

From the preceding table, 5AH = 90

<Example 2>

What is the decimal expression of the value 12 34H given as hexadecimal for each 7 bits?

From the preceding table, since 12H = 18 and 34H = 52

$18 \times 128 + 52 = 2356$

● Example of an Exclusive Message and Calculating a Checksum

Roland Exclusive messages are transmitted with a checksum at the end (before F7) to make sure that the message was correctly received. The value of the checksum is determined by the address and data (or size) of the transmitted exclusive message.

○ How to Calculate the Checksum

(Hexadecimal Numbers are Indicated by "H")

The checksum is a value that produces a lower 7 bits of zero when the address, size, and checksum itself are summed. If the exclusive message to be transmitted has an address of aa bb ccH and the data is dd ee ffH, the actual calculation would be as follows:

$$aa + bb + cc + dd + ee + ff = \text{sum}$$

$$\text{sum} / 128 = \text{quotient} \dots \text{remainder}$$

$$128 - \text{remainder} = \text{checksum}$$

(However, the checksum will be 0 if the remainder is 0.)

<Example>

When setting PGM Select to INPUT 2 for data set 1

From the "Parameter Address Map", the address of the PGM Select is 00H 1BH 00H and the INPUT 2 parameter is 01H. Therefore ...

| F0H | 41H | 10H | 00H 00H 00H 00H 25H | 12H | 00H 1BH 00H | 1EH | ??H | F7H |
|-----|-----|-----|---------------------|-----|-------------|-----|-----|-----|
| (1) | (2) | (3) | (4) | (5) | (6) | (7) | (8) | (9) |

- (1) Exclusive Status
- (2) ID Number (Roland)
- (3) Device ID
- (4) Model ID
- (5) Command ID (DT1)
- (6) Address
- (7) Data
- (8) Checksum
- (9) EOX

Next calculate the checksum. Add (6) to (7).

$$00H + 1BH + 00H + 1EH = 0 + 27 + 0 + 30 = 57 \text{ (sum)}$$

$$57 \text{ (sum)} / 128 = 0 \text{ (quotient)} \dots 57 \text{ (remainder)}$$

$$\text{Checksum} = 128 - 57 \text{ (remainder)} = 71 = 47H$$

Thus, the message to transmit is :

F0H 41H 10H 00H 00H 00H 00H 25H 12H 00H 1BH 00H 1EH 47H F7H

MIDI Implementation Chart

| Function | | Transmitted | Recognized | Remarks |
|-------------------------|-------------------------|-------------|------------|---------|
| Basic Channel | Default | 1 | 1 | |
| | Changed | 1 | 1 | |
| Mode | Default | x | x | |
| | Messages | x | x | |
| | Altered | ***** | ***** | |
| Note Number | True Voice | x | x | |
| Velocity | Note On | x | x | |
| | Note Off | x | x | |
| After Touch | Key's | x | x | |
| | Channel's | x | x | |
| Pitch bend | | x | x | |
| Control Change | 0-9 | x | x | |
| | 10-31 | x | x | |
| | 32-51 | x | x | |
| | 52-60 | x | x | |
| | 61-119 | x | x | |
| Program Change | : True Number | x | x | |
| System Exclusive | | o | o | |
| System Common | : Song Position | x | x | |
| | : Song Select | x | x | |
| | : Tune Request | x | x | |
| System Real Time | : Clock | x | x | |
| | : Commands | x | x | |
| Aux Messages | : All Sound Off | x | x | |
| | : Reset All Controllers | x | x | |
| | : Local On/Off | x | x | |
| | : All Notes Off | x | x | |
| | : Active Sensing | x | x | |
| | : System Reset | x | x | |
| Notes | | | | |

LAN/RS-232 Command Reference

The VR-120HD support two types of remote-interface communication: LAN and RS-232.

Using the LAN CONTROL port or RS-232 connector to send specific commands to the VR-120HD from a controlling device lets you operate the VR-120HD remotely.

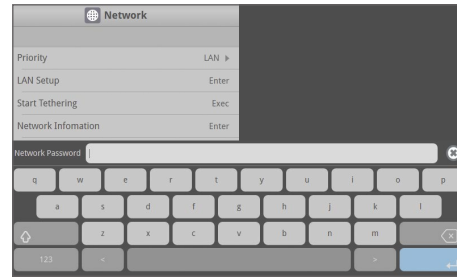
LAN Interface

This uses the LAN CONTROL port on the VR-120HD.

You use Telnet to operate the VR-120HD remotely over a LAN (TCP/IP protocol).

Communication standards

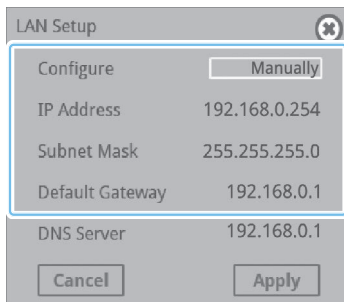
| | |
|-----------------|------------------|
| Port | LAN CONTROL jack |
| TCP port number | 8023 |



5. Press the [MENU] button to close the menu.

Specifying the VR-120HD's Network Settings

1. [MENU] button → “LAN Setup” → select the menu item shown below, and press the [VALUE] knob.



| Menu item | Explanation |
|-----------------|---|
| Configure | Selects how settings are made for the IP address, subnet mask, and default gateway. Using DHCP: The IP address and other information needed for connecting to the network is obtained automatically from the DHCP server of the LAN. Manually: The IP address, subnet mask, and default gateway are specified manually. |
| IP Adress | Shows the IP address. (*1) |
| Subnet Mask | Shows the subnet mask. (*1) |
| Default Gateway | Shows the default gateway. (*1) |

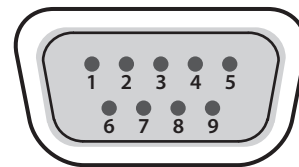
(*1) When “Configure” is set to “Manually”, set these respectively according to the network.

2. Use the [VALUE] knob to change the value of the setting.
3. Use the [VALUE] knob to select “Network Password”, and press the [VALUE] knob.
4. Set a network password (four characters).

Input the password that's set here when connecting a computer or other device on the same network to access the VR-120HD.

RS-232 Interface

RS-232 connector pin layout



DB-9 type (male)

Pin assignments

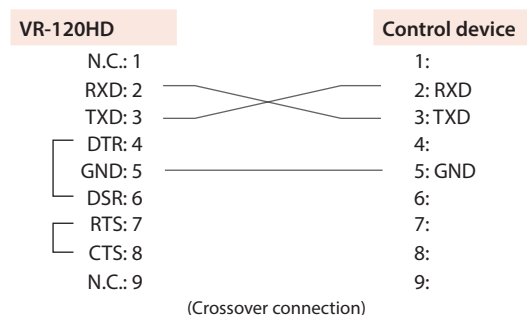
| Pin No. | Signal |
|---------|--------|
| 1 | N.C. |
| 2 | RXD |
| 3 | TXD |
| 4 | DTR |
| 5 | GND |
| 6 | DSR |
| 7 | RTS |
| 8 | CTS |
| 9 | N.C. |

Communication standards

| | |
|----------------------|---|
| Communication method | Synchronous (asynchronous), full-duplex |
| Communication speed | 9,600/38,400/115,200 bps |
| Parity | none |
| Data length | 8 bits |
| Stop bit | 1 bit |
| Code set | ASCII |

Cable wiring diagram

Use an RS-232 crossover cable to connect the VR-120HD and the controller (an RS-232-compatible computer or other device).



* The connections between 4 and 6 and between 7 and 8 are inside the VR-120HD.

Command Format

Commands are formatted using the configuration shown below.
Commands are all in ASCII code.

* Commands are common to the LAN and the RS-232 interface.

```
stx Command code : Parameter , Parameter ;
```

| | |
|---------------------|---|
| stx | ASCII code "02H" is a control code indicating the start of a command. "H" indicates that it is a hexadecimal value. |
| Command code | This specifies the command type (three single-byte alphanumeric characters). |
| Parameter | This is appended to a command that requires one or more parameter. The command and the parameter portion are separated by a ":" (colon). When there are multiple parameters, they are each separated by "," (comma) characters. |
| ; | This is the code that this unit recognizes as the end of a command. |

* The codes of stx (02H), ack (06H), xon (11H), and xoff (13H) are the control codes.

List of Commands

See "MIDI Implementation" (p. 2) for the SysEx addresses and setting values.

* When controlling via LAN (Telnet), "stx (02H)" may be omitted.

| Item | Sent command | Response command | Parameter |
|---|--------------|------------------|---|
| Parameter write (SysEx-supported command) | stxDTH:a,b; | ack | a: SysEx address (hexadecimal, three bytes) b: Setting value (hexadecimal) <Example> When setting "01H" to address 12H 34H 56H Ó stx-DTH:123456,01; |
| Parameter value retrieve (SysEx-supported command) | stxRQH:a,b; | stxDTH:a,c; | a: SysEx address (hexadecimal, three bytes) b: Request size (hexadecimal, three bytes) c: Setting value (hexadecimal) |
| Version information | stxVER; | stxVER:a,b; | a: VR-120HD (Product name) b: Version number <Example> 1.00 |
| Flow control | xon | | |
| Flow control | xoff | | |

Commands spontaneously sent from the VR-120HD

| Item | Sent command | Response command | Parameter |
|----------------|--------------|------------------|---|
| Error detected | | stxERR:a; | a: 0 (syntax error) The received command contains an error. 4 (invalid) This has no effect because it is controlled by another setting. 5 (out of range error) An argument of the received command is out of range. 6 (no stx error) The command does not have a "stx" prefix. * Only RS-232 |
| Flow control | | xon | |
| Flow control | | xoff | |